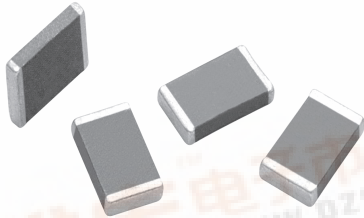


# ILS-2515

Vishay Dale



## Surface Mount Inductor



### FEATURES

- Low profile 0.047" [1.19mm] maximum thickness.
- Self shielding.
- Surface mountable.
- High Q for high efficiency.
- Excellent energy storage.
- Monolithic, ferrite construction.
- Terminals designed for maximum trace EMI and compact circuit design.
- 1500 pieces, 7" reel.
- Patents obtained.

### APPLICATIONS

Low profile DC/DC converters.  
Type I PCMCIA.  
Hand held electronics.  
Flat panel displays.

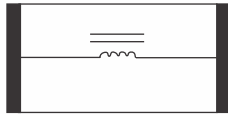
### ELECTRICAL SPECIFICATIONS

**Inductance Range:** 4.7μH to 10μH.

**Inductance Tolerance:** ± 20%.

**Temperature Range:** - 40°C to + 85°C.

### SCHEMATIC

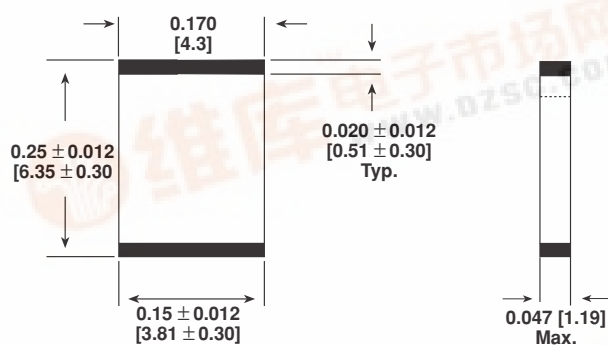


### STANDARD ELECTRICAL SPECIFICATIONS

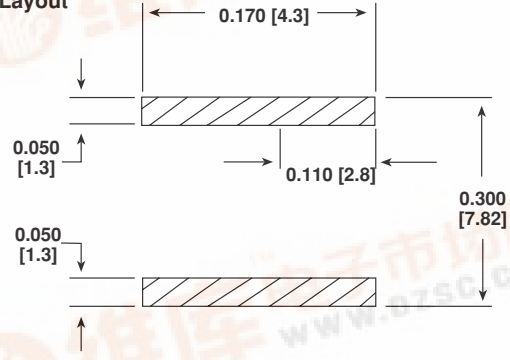
MODEL	IND. (μH) ± 20% @ 1MHz w/ 300mADC	Q @ 1MHz/7MHz (Min.)	SELF RESONANT FREQ. MIN. (MHz)	DCR MAX. (Ohms)	RATED DC CURRENT (mA)
ILS-2515-01	4.7	25/55	20	0.58	500
ILS-2515-02	10.0	25/50	15	0.95	500

### DIMENSIONS [in inches millimeters]

#### Dimensional Outline



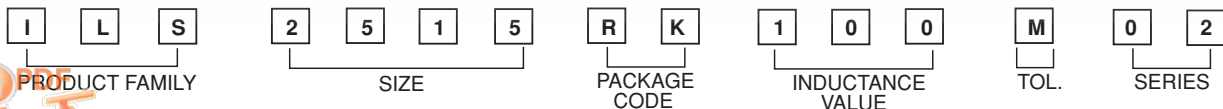
#### Pad Layout



### DESCRIPTION

ILS-2515 MODEL	10μH INDUCTANCE VALUE	± 20% INDUCTANCE TOLERANCE
	- 01 (4.7μH) - 02 (10μH)	

### SAP PART NUMBERING GUIDELINES (INTERNAL)

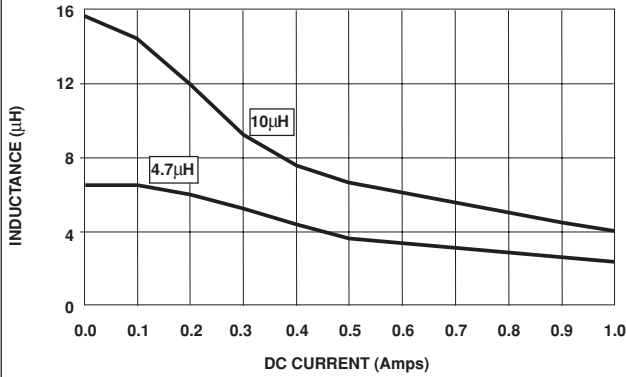


See the end of this data book for conversion tables

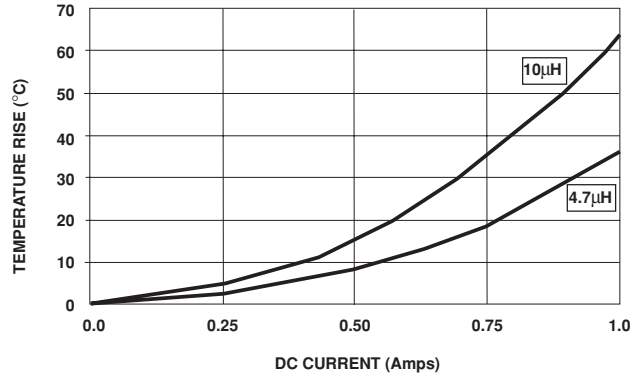


**PERFORMANCE GRAPHS**

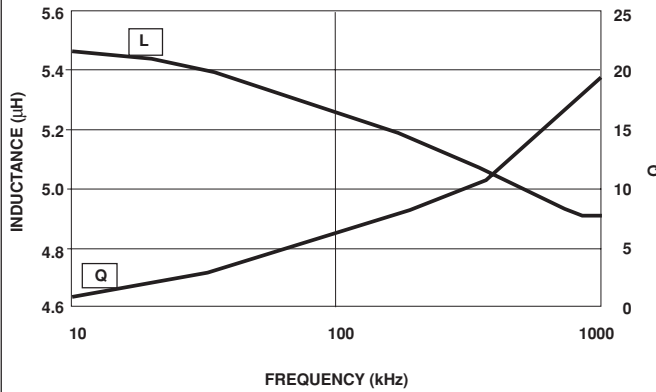
**Inductance vs DC Bias**



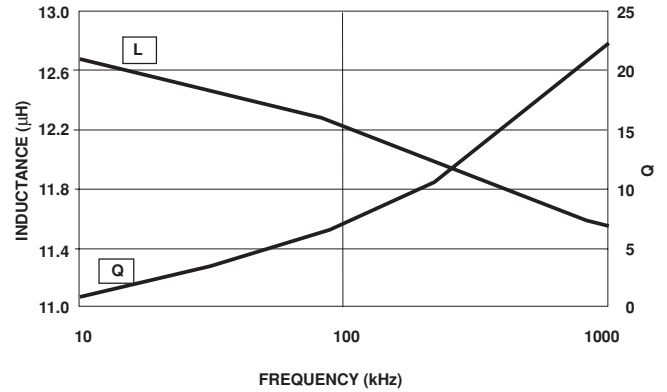
**Typical Current vs Temperature Rise**



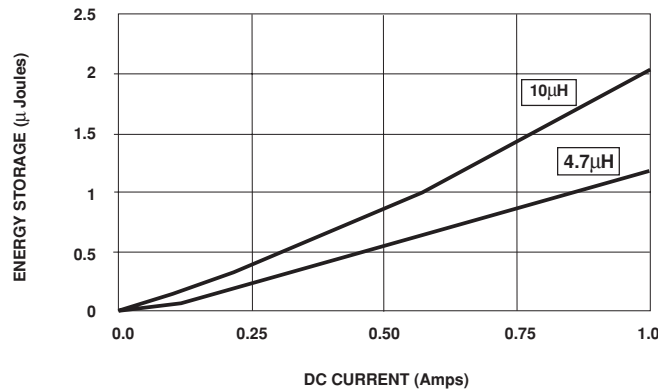
**4.7µH, L & Q vs Frequency**



**10µH, L & Q vs Frequency**



**Energy Storage**



**PACKAGING OPTIONS**

- Tape and Reel:  
Embossed plastic carrier tape.  
Per EIA481-1.  
1500 pieces on a 7" reel.