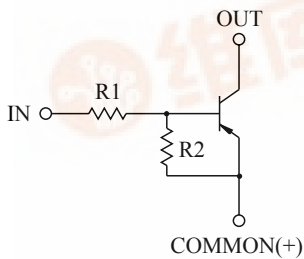


SWITCHING APPLICATION.  
INTERFACE CIRCUIT AND DRIVER CIRCUIT APPLICATION.

#### FEATURES

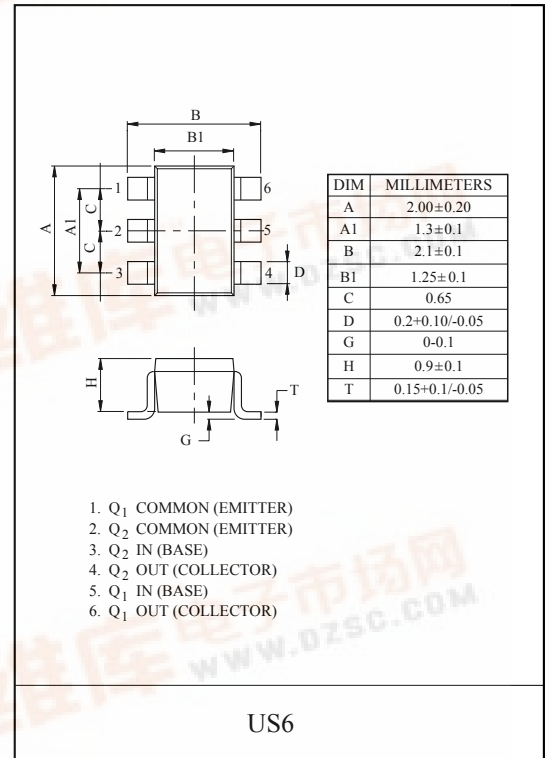
- With Built-in Bias Resistors.
- Simplify Circuit Design.
- Reduce a Quantity of Parts and Manufacturing Process.
- High Packing Density.

#### EQUIVALENT CIRCUIT

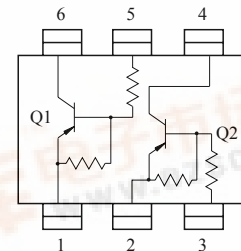


#### BIAS RESISTOR VALUES

TYPE NO.	R1(kΩ)	R2(kΩ)
KRA721U	4.7	4.7
KRA722U	10	10
KRA723U	22	22
KRA724U	47	47
KRA725U	2.2	47
KRA726U	4.7	47



#### EQUIVALENT CIRCUIT (TOP VIEW)



#### MAXIMUM RATING (Ta=25°C)

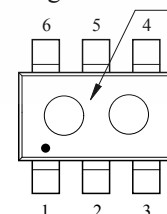
CHARACTERISTIC	SYMBOL	RATING	UNIT	
Output Voltage	KRA721U ~ 726U	$V_o$	-50	V
Input Voltage	KRA721U ~ 726U	$V_i$	-20, 10	V
			-30, 10	
			-40, 10	
			-40, 10	
			-12, 5	
			-20, 5	
Output Current	KRA721U ~ 726U	$I_o$	-100	mA
Power Dissipation		$P_D$ *	200	mW
Junction Temperature		$T_j$	150	°C
Storage Temperature Range		$T_{stg}$	-55 ~ 150	°C

\* Total Rating.

#### MARK SPEC

TYPE	KRA721U	KRA722U	KRA723U	KRA724U	KRA725U	KRA726U
MARK	JA	JB	JC	JD	JE	JF

#### Marking



#### Type Name

# KRA721U~KRA726U

## ELECTRICAL CHARACTERISTICS (Ta=25°C)

CHARACTERISTIC		SYMBOL	TEST CONDITION	MIN.	TYP.	MAX.	UNIT
Output Cut-off Current	KRA721U ~ 726U	$I_{O(OFF)}$	$V_O=-50V, V_I=0$	-	-	-500	nA
DC Current Gain	KRA721U	$G_I$	$V_O=-5V, I_O=-10mA$	30	55	-	
	KRA722U			50	80	-	
	KRA723U			70	120	-	
	KRA724U			80	200	-	
	KRA725U			80	200	-	
	KRA726U			80	200	-	
Output Voltage	KRA721U ~ 726U	$V_{O(ON)}$	$I_O=-10mA, I_I=-0.5mA$	-	-0.1	-0.3	V
Input Voltage (ON)	KRA721U	$V_{I(ON)}$	$V_O=-0.2V, I_O=-5mA$	-	-1.5	-2.0	V
	KRA722U			-	-1.8	-2.4	
	KRA723U			-	-2.1	-3.0	
	KRA724U			-	-2.8	-5.0	
	KRA725U			-	-0.8	-1.1	
	KRA726U			-	-0.9	-1.3	
Input Voltage (OFF)	KRA721U ~ 724U	$V_{I(OFF)}$	$V_O=-5V, I_O=-0.1mA$	-1.0	-1.2	-	V
	KRA725U ~ 726U			-0.5	-0.65	-	
Transition Frequency	KRA721U ~ 726U	$f_T^*$	$V_O=-10V, I_O=-5mA$	-	200	-	MHz
Input Current	KRA721U	$I_I$	$V_I=-5V$	-	-	-1.8	mA
	KRA722U			-	-	-0.88	
	KRA723U			-	-	-0.36	
	KRA724U			-	-	-0.18	
	KRA725U			-	-	-3.6	
	KRA726U			-	-	-1.8	

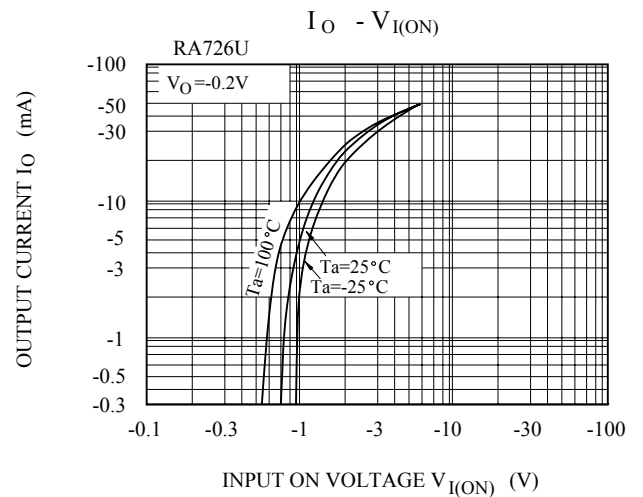
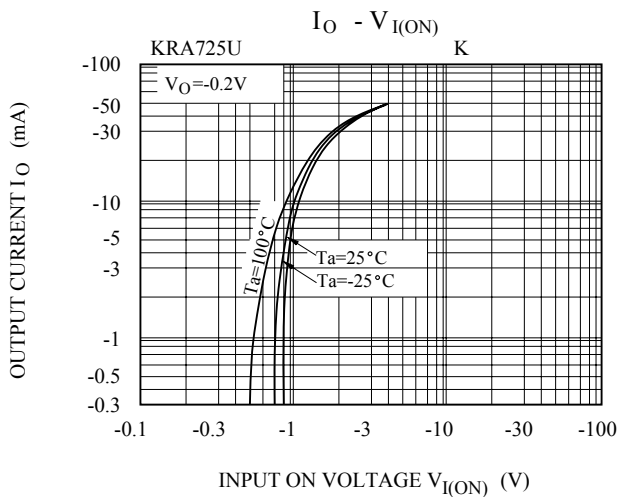
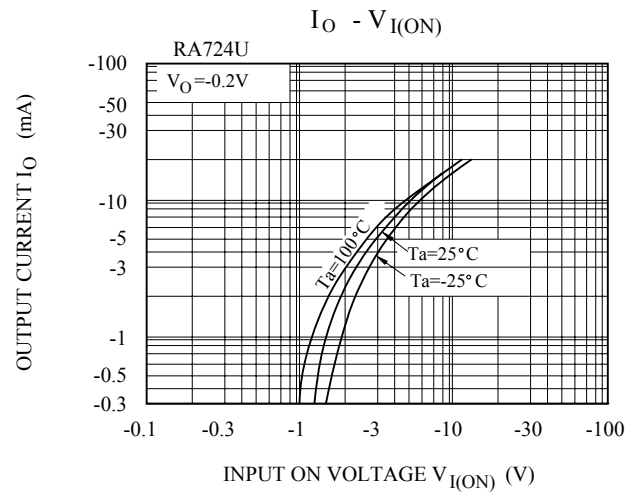
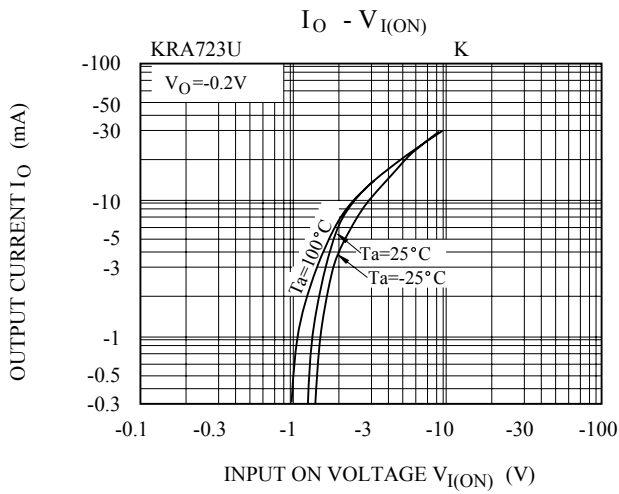
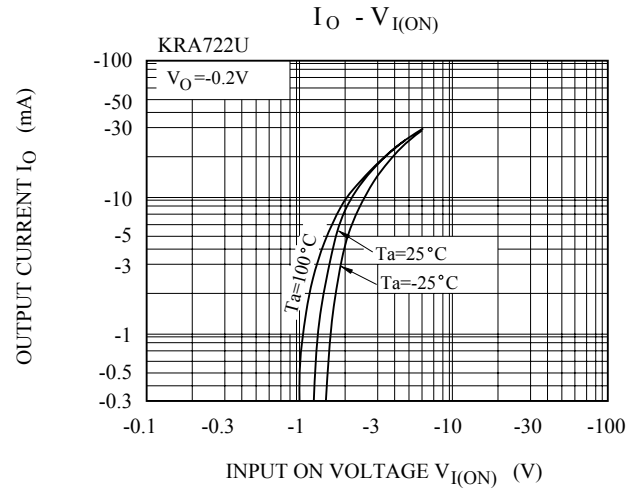
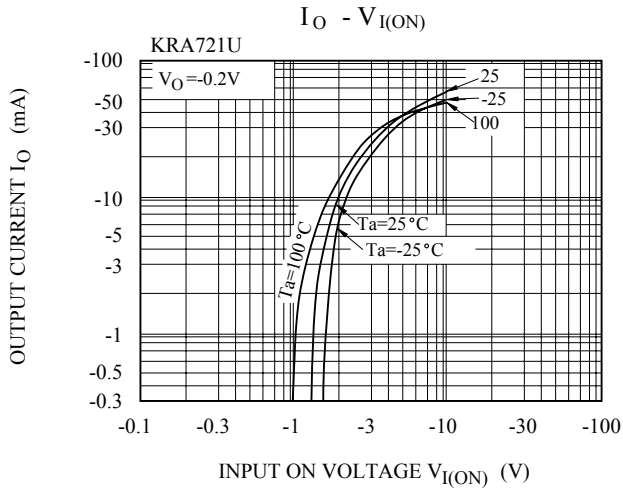
Note : \* Characteristic of Transistor Only.

# KRA721U~KRA726U

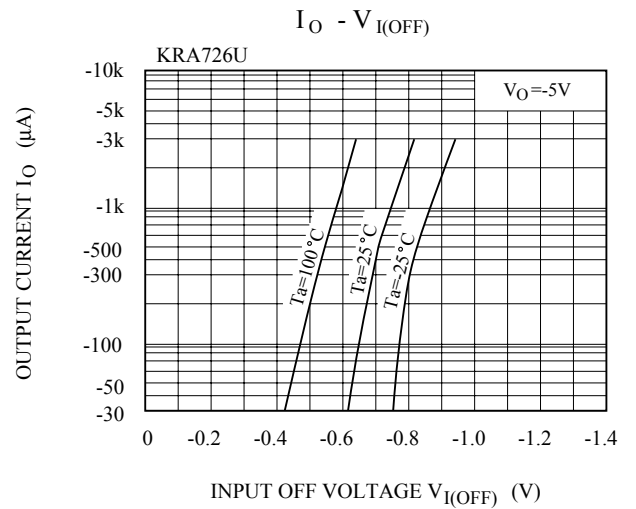
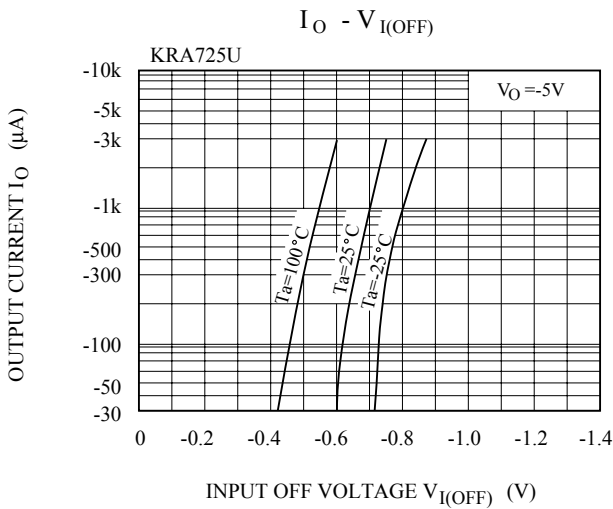
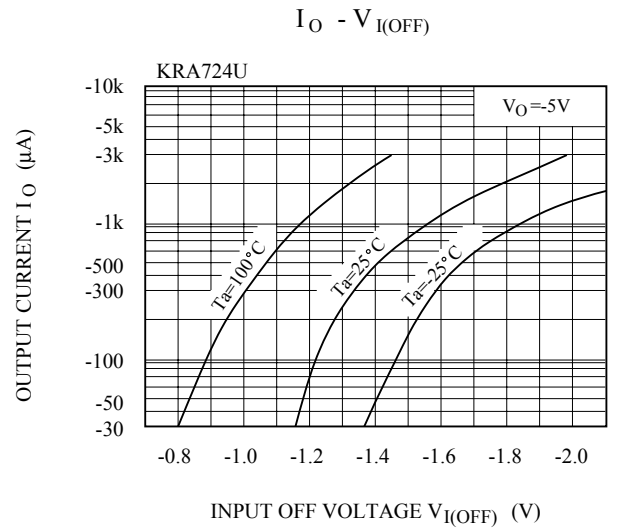
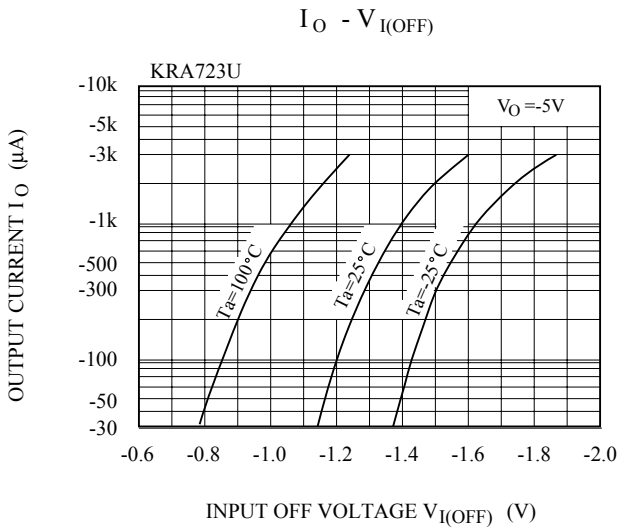
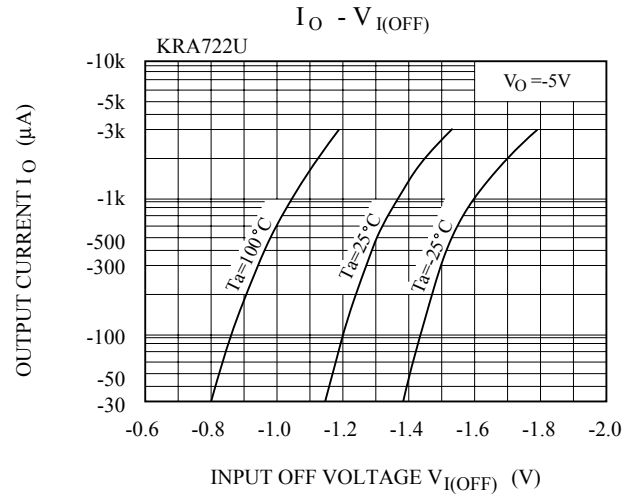
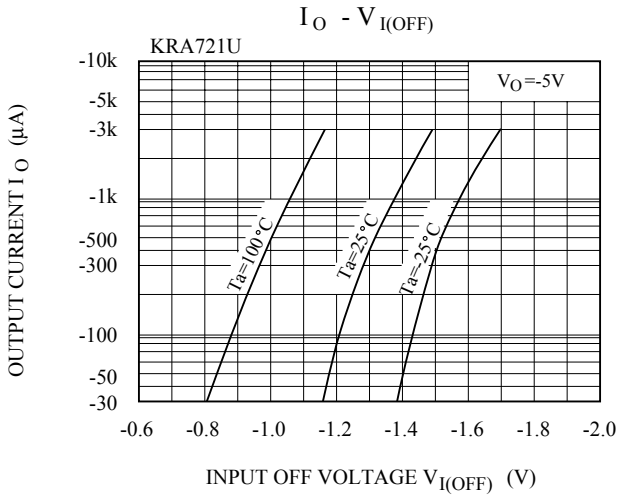
## ELECTRICAL CHARACTERISTICS (Ta=25°C)

CHARACTERISTIC		SYMBOL	TEST CONDITION	MIN.	TYP.	MAX.	UNIT
Switching Time	Rise Time	KRA721U	$V_O = -5V$ $V_{IN} = -5V$ $R_L = 1k\Omega$	-	0.07	-	$\mu S$
		KRA722U		-	0.06	-	
		KRA723U		-	0.2	-	
		KRA724U		-	0.24	-	
		KRA725U		-	0.02	-	
		KRA726U		-	0.07	-	
	Storage Time	KRA721U		-	1.1	-	
		KRA722U		-	1.1	-	
		KRA723U		-	1.1	-	
		KRA724U		-	1.1	-	
		KRA725U		-	1.1	-	
		KRA726U		-	1.1	-	
	Fall Time	KRA721U		-	0.15	-	
		KRA722U		-	0.24	-	
		KRA723U		-	0.38	-	
		KRA724U		-	0.63	-	
		KRA725U		-	0.1	-	
		KRA726U		-	0.2	-	

# KRA721U~KRA726U



# KRA721U~KRA726U



# KRA721U~KRA726U

