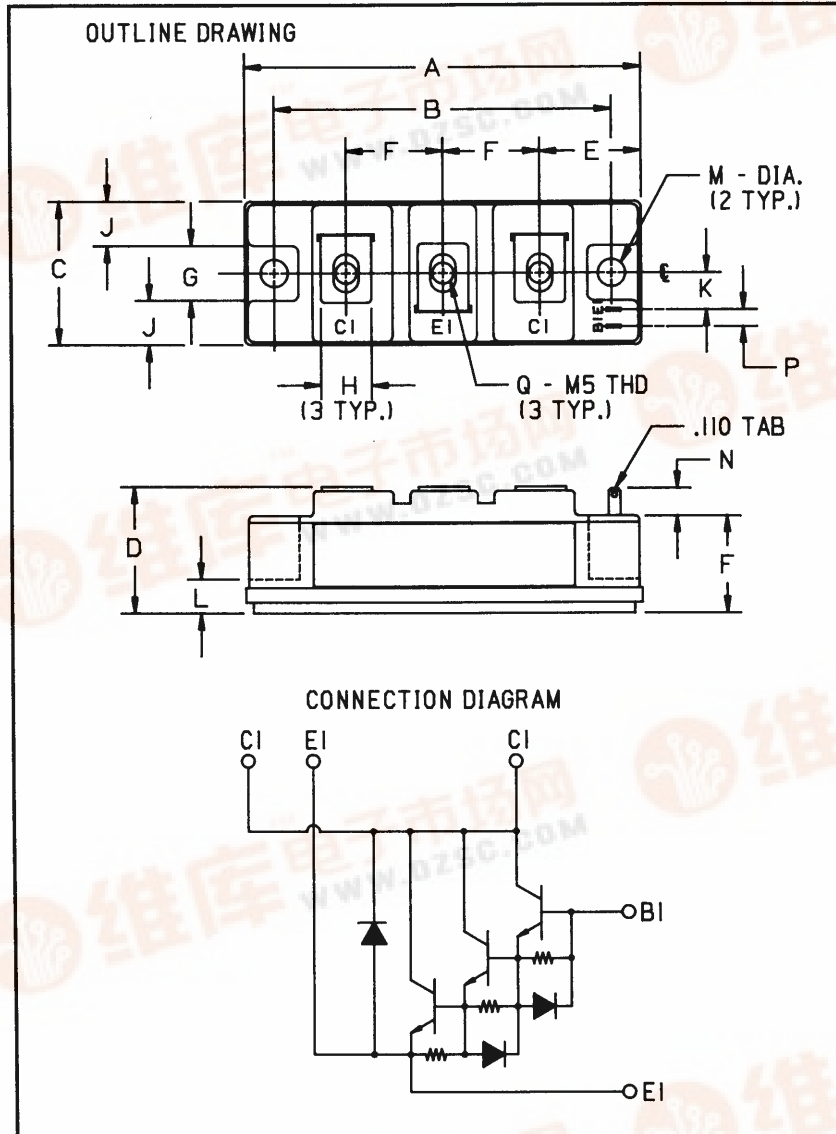




## KS221K05

Powerex, Inc., 200 Hillis Street, Youngwood, Pennsylvania 15697-1800 (412) 925-7272

### Single Darlington Transistor Module 50 Amperes/1000 Volts



#### Description:

The Powerex Single Darlington Transistor Modules are high power devices designed for use in switching applications. The modules are isolated, consisting of one Darlington Transistor with a reverse parallel connected high-speed diode and base-to-emitter speed-up diode.

#### Features:

- Isolated Mounting
- Planar Chips
- Discrete Fast Recovery Feedback Diode
- High Gain ( $h_{FE}$ )
- TAB Quick-Connect Terminals
- Base-Emitter Speed-up Diode

#### Applications:

- Inverters
- DC Motor Control
- Switching Power Supplies
- AC Motor Control

#### Ordering Information:

Example: Select the complete eight digit module part number you desire from the table - i.e. KS221K05 is a 1000 Volt, 50 Ampere Single Darlington Module.

Outline Drawing

Dimensions	Inches	Millimeters
A	3.701 Max.	94 Max.
B	3.150 ± 0.010	80 ± 0.25
C	1.339 Max.	34 Max.
D	1.181 Max.	30 Max.
E	0.945	24
F	0.906	23
G	0.512	13
	0.472	12

Dimensions	Inches	Millimeters
J	0.413	10.5
K	0.344	8.75
L	0.315	8
M	0.256 Dia.	6.5 Dia.
N	0.256 Min.	6.5 Min.
P	0.157	4
Q	M5 Metric	M5

Type	V <sub>CEO(sus)</sub> Volts 1000)	Current Rating Amperes (X 10)
KS22	1K	05





Powerex, Inc., 200 Hillis Street, Youngwood, Pennsylvania 15697-1800 (412) 925-7272

KS221K05  
Single Darlington Transistor Module  
50 Amperes/1000 Volts

**Absolute Maximum Ratings,  $T_j = 25^\circ\text{C}$  unless otherwise specified**

Ratings	Symbol	KS221K05	Units
Junction Temperature	$T_j$	-40 to 150	$^\circ\text{C}$
Storage Temperature	$T_{\text{stg}}$	-40 to 125	$^\circ\text{C}$
Collector-Emitter Sustaining Voltage, $V_{BE} = -2\text{V}$	$V_{CEV(\text{sus})}$	1000	Volts
Collector-Base Voltage	$V_{CBO}$	1000	Volts
Emitter-Base Voltage	$V_{EBO}$	7	Volts
Collector-Emitter Voltage	$V_{CEV}$	1000	Volts
Continuous Collector Current	$I_C$	50	Amperes
Diode Forward Current	$I_{FM}$	50	Amperes
Continuous Base Current	$I_B$	3	Amperes
Diode Surge Current	$I_{FSM}$	500	Amperes
Power Dissipation	$P_t$	400	Watts
Max. Mounting Torque M5 Terminal Screws	-	17	in.-lb.
Max. Mounting Torque M6 Mounting Screws	-	26	in.-lb.
Module Weight (Typical)	-	200	Grams
V Isolation	$V_{RMS}$	2500	Volts

**Electrical Characteristics,  $T_j = 25^\circ\text{C}$  unless otherwise specified**

Characteristics	Symbol	Test Conditions	Min.	Typ.	Max.	Units
Collector Cutoff Current	$I_{CEV}$	$V_{CE} = 1000\text{V}, V_{BE} = -2\text{V}$ $V_{CE} = 1000\text{V}, V_{BE} = -2\text{V}, T_C = 125^\circ\text{C}$	-	-	1	mA
Emitter Cutoff Current	$I_{EBO}$	$V_{EB} = 7\text{V}$	-	-	200	mA
DC Current Gain	$h_{FE}$	$I_C = 50\text{A}, V_{CE} = 5\text{V}$	100	-	-	-
Diode Forward Voltage	$V_{FM}$	$I_{FM} = 50\text{A}$	-	-	1.8	Volts
Collector-Emitter Saturation Voltage	$V_{CE(\text{sat})}$	$I_C = 50\text{A}, I_B = 1\text{A}$	-	-	2.5	Volts
Base-Emitter Saturation Voltage	$V_{BE(\text{sat})}$	$I_C = 50\text{A}, I_B = 1\text{A}$	-	-	3.5	Volts
Resistive Turn-on	$t_{on}$	$V_{CC} = 600\text{V}$	-	-	2.5	$\mu\text{s}$
Load Storage Time	$t_s$	$I_C = 50\text{A}$	-	-	15	$\mu\text{s}$
Switch Times Fall Time	$t_f$	$I_{B1} = 1\text{A}, I_{B2} = -1\text{A}$	-	-	3.0	$\mu\text{s}$

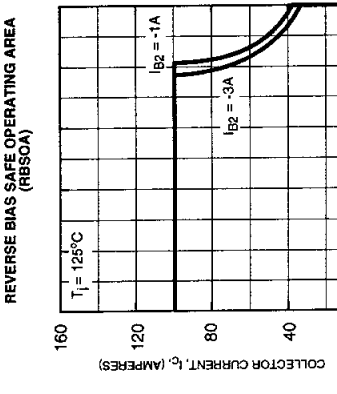
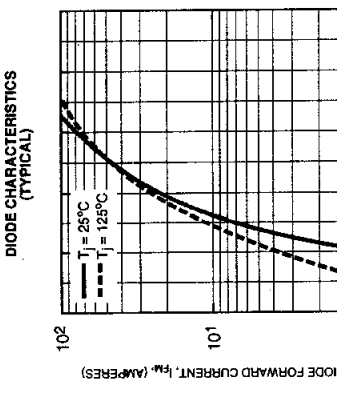
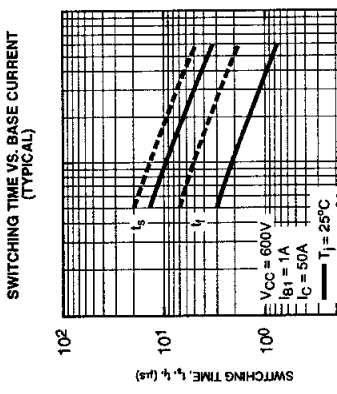
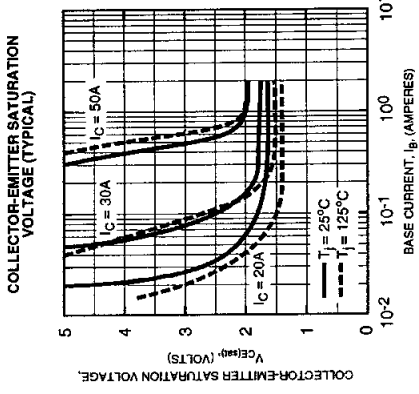
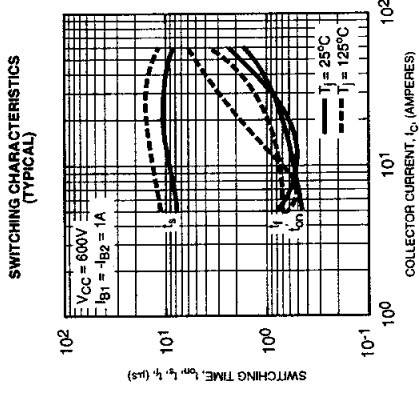
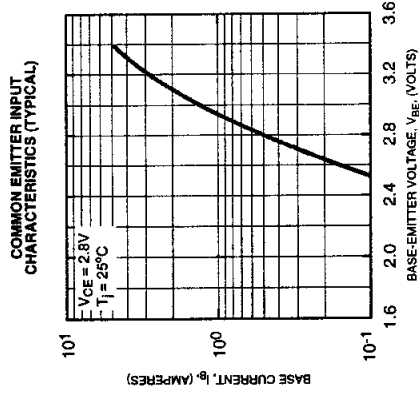
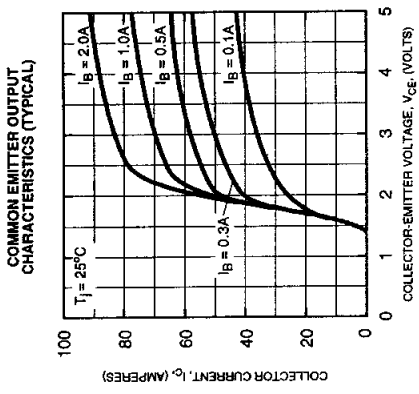
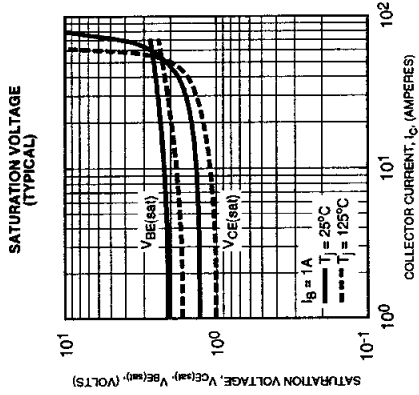
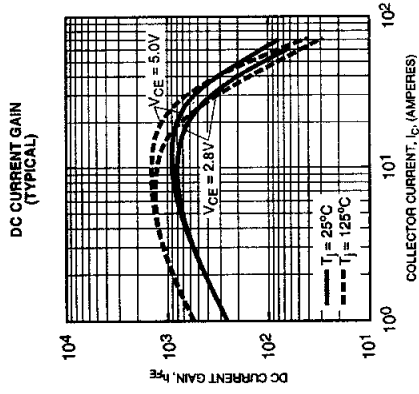
**Thermal and Mechanical Characteristics,  $T_j = 25^\circ\text{C}$  unless otherwise specified**

Characteristics	Symbol	Test Conditions	Min.	Typ.	Max.	Units
-----------------	--------	-----------------	------	------	------	-------



Powerex, Inc., 200 Hillis Street, Youngwood, Pennsylvania 15697-1800 (412) 925-7272

**KS221K05**  
Single Darlingtion Transistor Module  
50 Amperes/1000 Volts





Powerex, Inc., 200 Hillis Street, Youngwood, Pennsylvania 15697-1800 (412) 925-7272

**KS221K05**  
**Single Darlington Transistor Module**  
 50 Amperes/1000 Volts

