

Monolithic Linear IC

SANYO	No.994D	LA6339
	High-Performance Quad Comparator	

The LA6339 is a high-performance quad comparator that is capable of operating from a single power supply over a wide range of 2V to 36V. Because of its excellent input characteristics and low power, it can be very conveniently applied to multisignal parallel comparator circuits that require high-density assembly.

Features

- Wide supply voltage range (Single supply: 2.0 to 36.0 V, dual supplies: ±1.0 to ±18.0V).
- Wide common-mode input voltage range (0 to $V_{CC}-1.5$ V).
- Open collector output enabling wired OR.
- Small current dissipation ($0.8\text{mA}/V_{CC}=5\text{V}, R_L=\infty$) and low power.

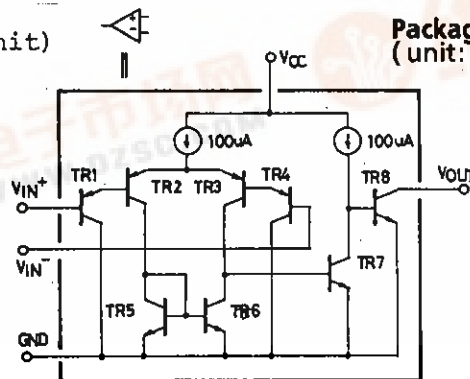
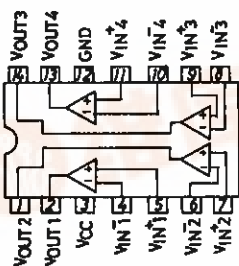
Maximum Ratings at $T_a=25^\circ\text{C}$

Parameter	Symbol	Value	Unit
Maximum Supply Voltage	$V_{CC\text{max}}$	36	V
Differential Input Voltage	V_{ID}	36	V
Common-mode Input Voltage	V_{ICM}	-0.3 to +36	V
Allowable Power Dissipation	$P_{d\text{max}}$	700	mW
Operating Temperature	T_{opr}	-30 to +85	$^\circ\text{C}$
Storage Temperature	T_{stg}	-55 to +125	$^\circ\text{C}$

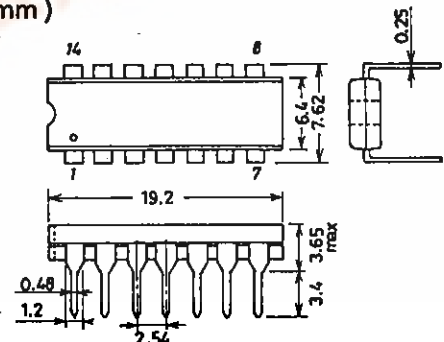
Operating Characteristics at $T_a=25^\circ\text{C}, V_{CC}=5\text{V}$

Parameter	Symbol	Test circuit	min	typ	max	unit
Input Offset Voltage	V_{IO}	1		±2	±5	mV
Input Offset Current	I_{IO}	2		±5	±50	nA
Input Bias Current	I_B	3		25	250	nA
Common-mode Input Voltage	V_{ICM}		0		$V_{CC}-1.5$	V
Current Dissipation	I_{CC}	4		0.8	2	mA
Voltage Gain	V_G	5		200		V/mV
Response Time		6		1.3		μs
Output Sink Current	I_{SINK}	7	6	16		mA
Output Saturation Voltage	V_{OL}	8		0.2	0.4	V
Output Leak Current	I_{LEAK}	9		0.1		nA

Pin Assignment and Equivalent Circuit (1 unit)

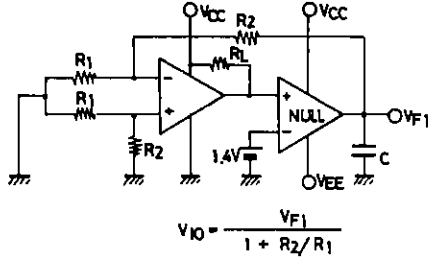


Package Dimensions 3003A-D14IC (unit: mm)

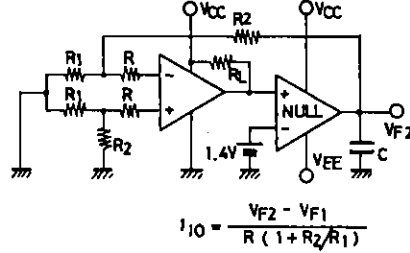


Test Circuits

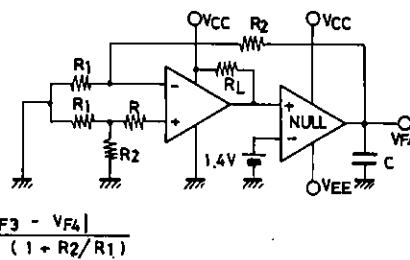
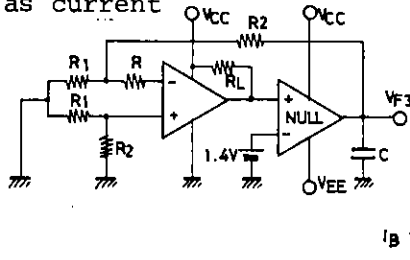
1. Input offset voltage



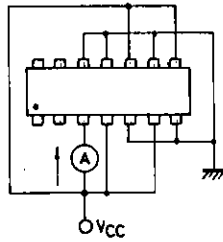
2. Input offset current



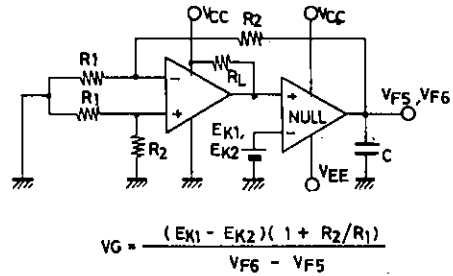
3. Input bias current



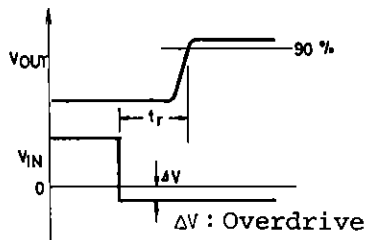
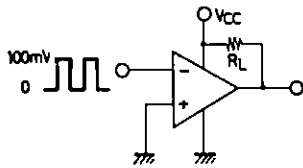
4. Current dissipation



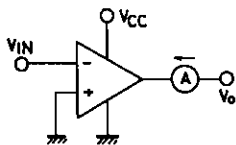
5. Voltage gain



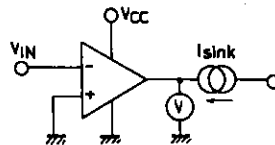
6. Response time



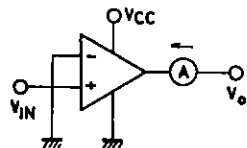
7. Output sink current

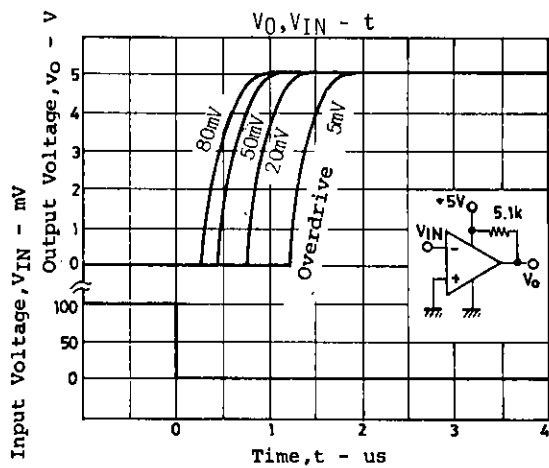
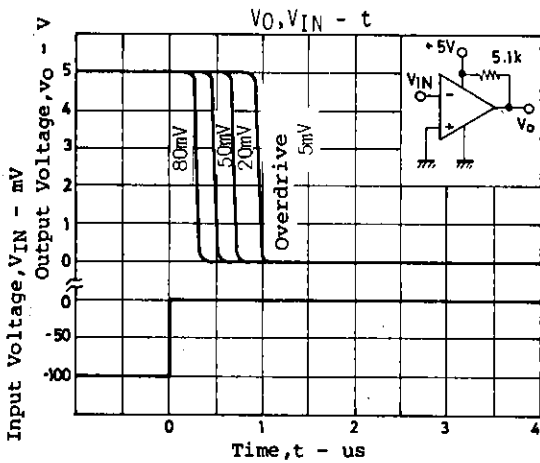
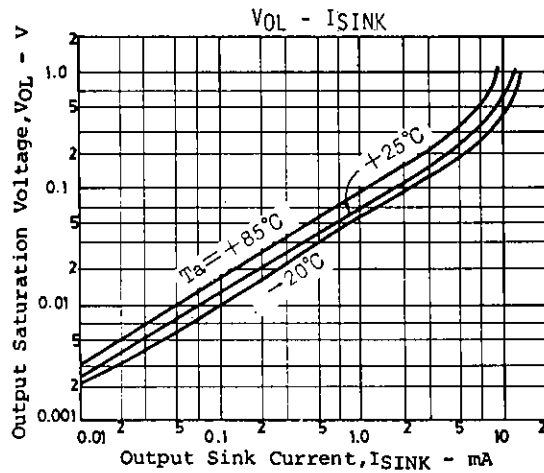
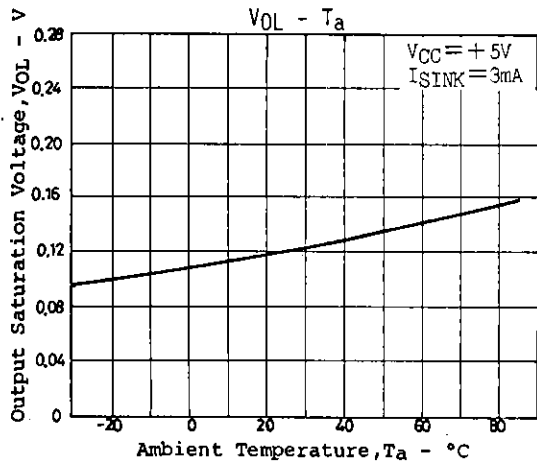
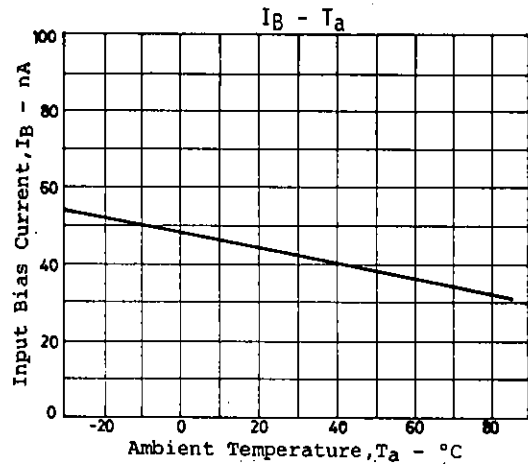
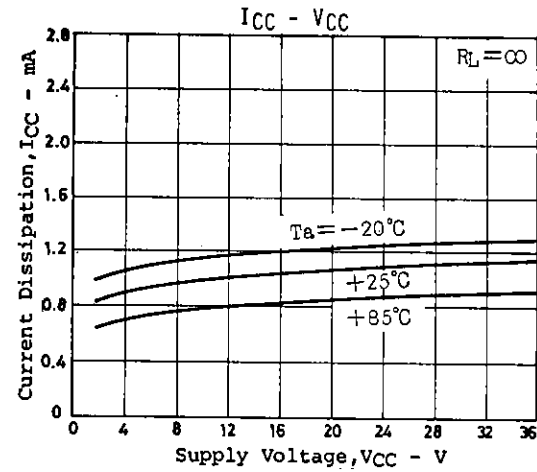


8. Output saturation voltage



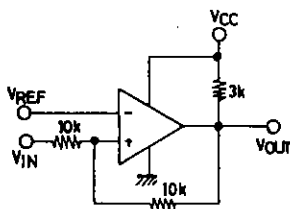
9. Output leak current



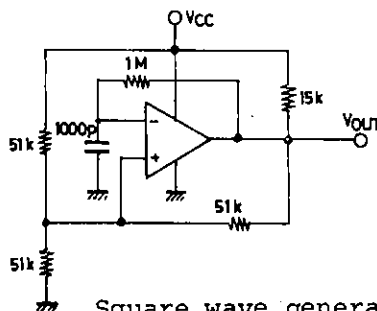


Sample Application Circuits

Unit (resistance: Ω , capacitance: F)



Voltage comparator (with hysteresis)



Square wave generator

- No products described or contained herein are intended for use in surgical implants, life-support systems, aerospace equipment, nuclear power control systems, vehicles, disaster/crime-prevention equipment and the like, the failure of which may directly or indirectly cause injury, death or property loss.
- Anyone purchasing any products described or contained herein for an above-mentioned use shall:
 - ① Accept full responsibility and indemnify and defend SANYO ELECTRIC CO., LTD., its affiliates, subsidiaries and distributors and all their officers and employees, jointly and severally, against any and all claims and litigation and all damages, cost and expenses associated with such use;
 - ② Not impose any responsibility for any fault or negligence which may be cited in any such claim or litigation on SANYO ELECTRIC CO., LTD., its affiliates, subsidiaries and distributors or any of their officers and employees jointly or severally.
- Information (including circuit diagrams and circuit parameters) herein is for example only; it is not guaranteed for volume production. SANYO believes information herein is accurate and reliable, but no guarantees are made or implied regarding its use or any infringements of intellectual property rights or other rights of third parties.