



SANYO Semiconductors

## DATA SHEET

# LA6563 — Monolithic Linear IC

## 4CH Bridge (BTL) Driver for CD

### Overview

The LA6563 is a 4CH bridge (BTL) driver for CD players.

### Features

- Built-in bridge connection (BTL) POWER AMP 4CH
- $I_O$  max 1A
- MUTE circuit (main power is ON/OFF) with 3 systems
- Built-in STBY circuit (all circuits are OFF)
- Provides bias voltage (VREF) switching function (Select external or internal reference voltage.  
Internal reference voltage is 2.5V: TYP.)
- Output voltage (dynamic range) is high. (6V: TYP)

### Specifications

**Maximum Ratings** at  $T_a = 25^\circ\text{C}$

Parameter	Symbol	Conditions	Ratings	Unit
Power supply voltage	$V_{CC}$ max	$V_{CC} = V_S * 1$	14	V
	$V_S$ max	$V_{CC} = V_S * 1$	14	V
Allowable power dissipation	$P_d$ max	Independent IC*2	0.8	W
		Specific board (114.3mm × 76.1mm × 1.6mm, glass epoxy resin) *2	2.0	
Maximum input voltage	$V_{INB}$		13	V
Maximum output current	$I_O$ max	Each BTL-AMP of CH1 to CH4	1	A
MUTE pin voltage	$V_{MUTE}$		13	V
Operating temperature	$T_{opr}$		-30 to +85	$^\circ\text{C}$
Storage temperature	$T_{stg}$		-55 to +150	$^\circ\text{C}$

\*1  $V_{CC}$  and  $V_S$  must be shorted externally to use.  $V_{CC}$ : signal system power supply,  $V_S$ : power system supply.

\*2 For information about allowable power dissipation, refer to the reference data of previous models. For more information, it will be described after completing the sample.

**Recommended Operating Conditions** at  $T_a = 25^\circ\text{C}$

Parameter	Symbol	Conditions	Ratings	Unit
Power supply voltage	$V_{CC}$	$V_{CC} = V_S$	4 to 13	V

■ Any and all SANYO products described or contained herein do not have specifications that can handle applications that require extremely high levels of reliability, such as life-support systems, aircraft's control systems, or other applications whose failure can be reasonably expected to result in serious physical and/or material damage. Consult with your SANYO representative nearest you before using any SANYO products described or contained herein in such applications.

■ SANYO assumes no responsibility for equipment failures that result from using products at values that exceed, even momentarily, rated values (such as maximum ratings, operating condition ranges, or other parameters) listed in products specifications of any and all SANYO products described or contained herein.

## LA6563

**Electrical Characteristics** at  $T_a = 25^{\circ}\text{C}$ ,  $V_{CC} = V_S = 8\text{V}$ ,  $V_{REF} = 1.65\text{V}$ ,  $V_{REF-SW} = 3.3\text{V}$ ,

$\text{MUTE1} = \text{MUTE2} = \text{MUTE3} = 3.3\text{V}$ , unless otherwise specified

Parameter	Symbol	Conditions	Ratings			Unit
			min	typ	max	
[Whole]						
No-load current consumption 1	I <sub>CC-ON</sub>	All AMP output ON, MUTE; HI		30	45	mA
No-load current consumption 2	I <sub>CC-OFF</sub>	All AMP output OFF, MUTE; LOW		5	10	mA
No-load current consumption 3	I <sub>CC-OFF-STBY</sub>	All circuits OFF, STBY: L			1	mA
STBY ON voltage	STBY-ON		2			V
STBY OFF voltage	STBY-OFF				0.5	V
STBY hysteresis voltage	STBY-HYS			80		mV
[Output AMP block]						
Output offset voltage	VOFF	Between (+) and (-) output of each channel	-50		50	mV
Output voltage	V <sub>O</sub>	R <sub>L</sub> = 0Ω, Voltage between (+) and (-) output of each channel *1		6		V
Closed circuit voltage gain	VG1	*2	5.4	6	6.6	times
Slew rate	SR	For output by AMP alone, it must be doubled *3	0.5			V/μs
MUTE ON voltage	VMUTE-ON	MUTE *4	2			V
MUTE OFF voltage	VMUTE-OFF	MUTE *4			0.5	V
MUTE hysteresis voltage	VMUTE-HYS			80		mV
[Input OP-AMP block]						
Output offset voltage	V <sub>IN-OFF</sub>	For BUFFER	-10		10	mV
Input voltage range	V <sub>IN-OP</sub>		0		V <sub>CC</sub> -1.5	V
Output current (SINK)	V <sub>IN-SINK</sub>			2		mA
Output current (SOURCE)	V <sub>IN-SOURCE</sub>		300	500		μA
[OP-AMP block]						
Output offset voltage	OP-VOFF	For BUFFER	-10		10	mV
Input voltage range	OP-V <sub>IN</sub>		0		V <sub>CC</sub> -1.5	V
Output current (SINK)	OP-SINK	SINK current		10		mA
Output current (SOURCE)	OP-SOURCE	SOURCE current		10		mA
[VREF-AMP block]						
VREF-AMP offset voltage	VOFF-VREF	VREF-SW “H” (For external reference voltage selected)	-10		10	mV
Internal VREF voltage	VREF-CONST	VREF-SW “L” (For internal reference voltage selected)	2.3	2.5	2.7	V
VREF input voltage range	1BIN		1		V <sub>CC</sub> -1.5	V
VREF switch voltage 1	VSW1	Select external reference voltage *5	3			V
VREF switch voltage 2	VSW2	Select internal reference voltage *5			1	V

\*1. Voltage for both ends of the load when connecting the  $8\Omega$  load between outputs. Input is H or L.

Output is saturated.

\*2. Input AMP is 0 dB for BUFFER.

\*3. Design guaranteed performance.

\*4. MUTE is HI for output ON and LOW for output OFF (AMP output is OFF, HI impedance).

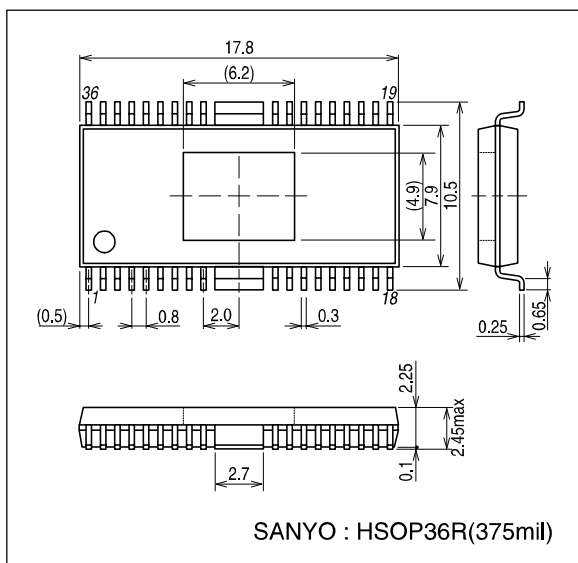
Each MUTE activates independently to a corresponding channel.

\*5. VREF-SW is set to "H" for switching to external reference voltage and "L" for switching to internal reference voltage.

## Package Dimensions

unit : mm

3251



- Specifications of any and all SANYO products described or contained herein stipulate the performance, characteristics, and functions of the described products in the independent state, and are not guarantees of the performance, characteristics, and functions of the described products as mounted in the customer's products or equipment. To verify symptoms and states that cannot be evaluated in an independent device, the customer should always evaluate and test devices mounted in the customer's products or equipment.
- SANYO Electric Co., Ltd. strives to supply high-quality high-reliability products. However, any and all semiconductor products fail with some probability. It is possible that these probabilistic failures could give rise to accidents or events that could endanger human lives, that could give rise to smoke or fire, or that could cause damage to other property. When designing equipment, adopt safety measures so that these kinds of accidents or events cannot occur. Such measures include but are not limited to protective circuits and error prevention circuits for safe design, redundant design, and structural design.
- In the event that any or all SANYO products(including technical data, services) described or contained herein are controlled under any of applicable local export control laws and regulations, such products must not be exported without obtaining the export license from the authorities concerned in accordance with the above law.
- No part of this publication may be reproduced or transmitted in any form or by any means, electronic or mechanical, including photocopying and recording, or any information storage or retrieval system, or otherwise, without the prior written permission of SANYO Electric Co., Ltd.
- Any and all information described or contained herein are subject to change without notice due to product/technology improvement, etc. When designing equipment, refer to the "Delivery Specification" for the SANYO product that you intend to use.
- Information (including circuit diagrams and circuit parameters) herein is for example only ; it is not guaranteed for volume production. SANYO believes information herein is accurate and reliable, but no guarantees are made or implied regarding its use or any infringements of intellectual property rights or other rights of third parties.

This catalog provides information as of June, 2004. Specifications and information herein are subject to change without notice.