

Monolithic Digital IC

SANYO	No.3346	LB1688
3-Phase Brushless Motor Driver		

Applications

The LB1688 is a 3-phase brushless motor driver IC ideally suited for use in VTR capstan motor, drum motor drive applications.

Features and Functions

- (1) 120° voltage linear type
- (2) Soft switching type eliminating noises caused by current switching and making the values of external capacitors smaller (comparable to those of chip capacitors)
- (3) On-chip thermal shutdown

Absolute Maximum Ratings at Ta = 25°C

			unit
Maximum Supply Voltage	V _{CC} max1	20	V
	V _{CC} max2	7.0	V
Output Supply Voltage	V _{OUT.V.W.}	22	V
Output Current	I _{OUT}	1.5	A
Allowable Power Dissipation	P _d max	2.1	W
Operating Temperature	T _{opr}	-20 to +75	°C
Storage Temperature	T _{stg}	-55 to +125	°C

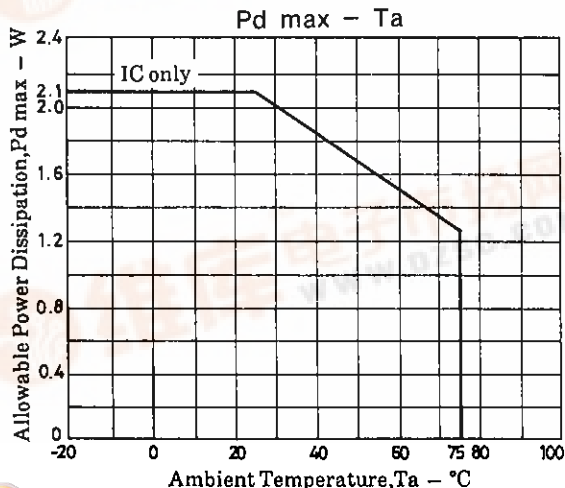
Allowable Operating Conditions at Ta = 25°C

			unit
Supply Voltage	V _{CC} 1	8.5 to 18	V
	V _{CC} 2	4.3 to 6.5	V

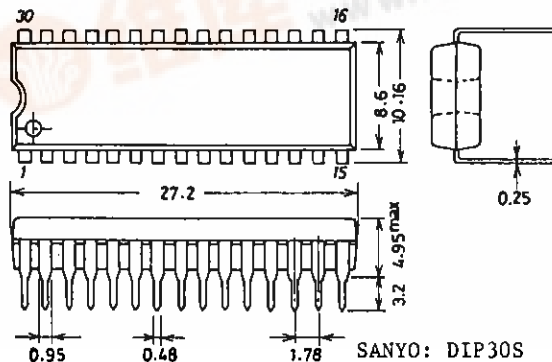
Electrical Characteristics at Ta = 25°C, V_{CC}1 = 12V, V_{CC}2 = 5V

[Power Supply]				min	typ	max	unit
Supply Current 1	I _{CC} 1	V _C = 0, R _L = ∞		17	30		mA
Supply Current 2	I _{CC} 2	V _C = 0		6.5	9.5		mA

Continued on next page.



Package Dimensions 3061-D30SNIC (unit: mm)



SANYO: DIP30S

LB1688

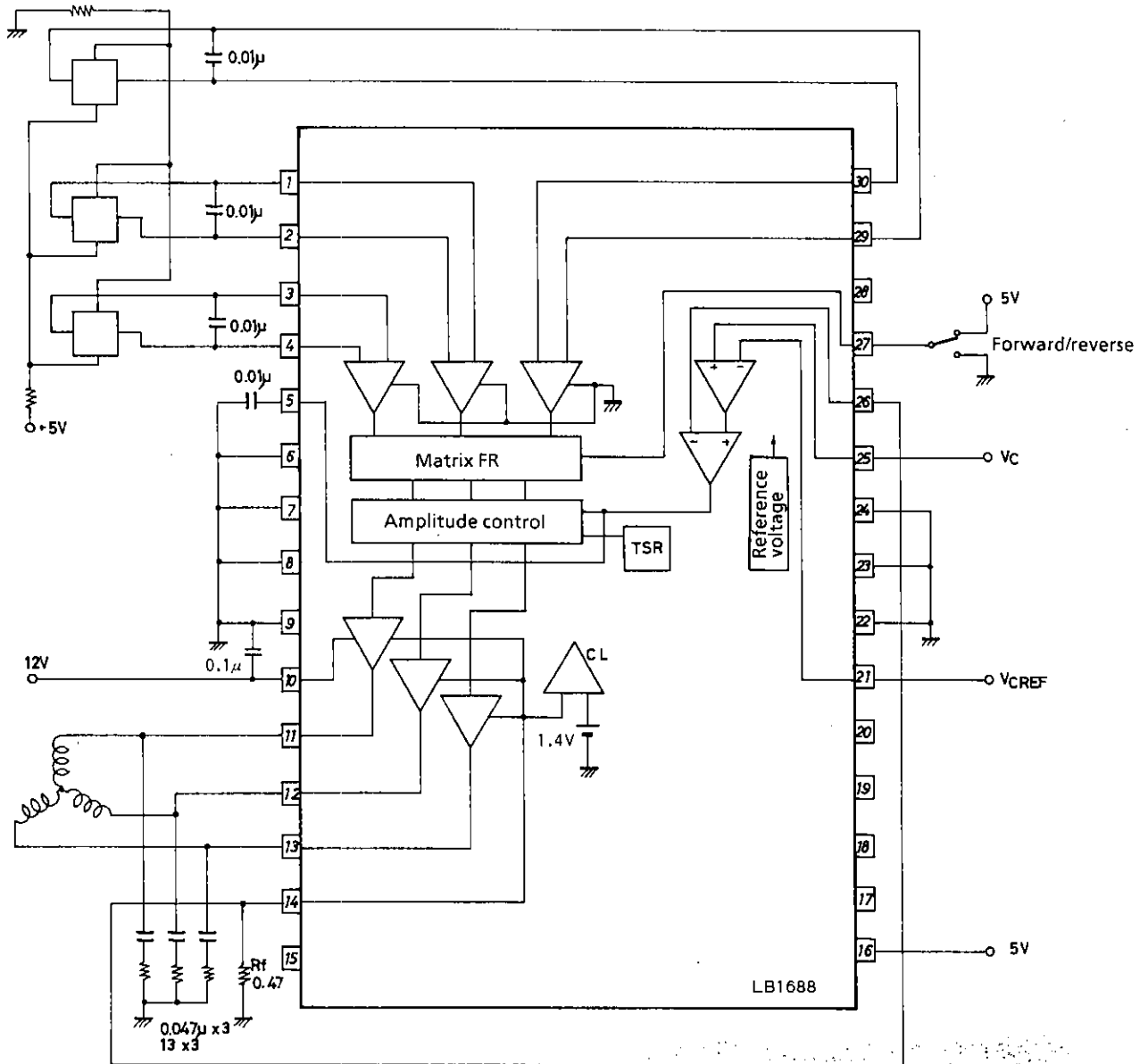
Continued from preceding page.

			min	typ	max	unit
[Output]						
Output Saturation Voltage	$V_{O(sat)1}$	$I_{OUT} = 0.5A, \text{sink} + \text{source}$		1.6	2.2	V
	$V_{O(sat)2}$	$I_{OUT} = 1.0A, \text{sink} + \text{source}$		2.0	3.0	V
Output TRS Voltage	$V_{O(sus)}$	$I_{OUT} = 20mA$ (See note.)	20			V
Output Quiescent Voltage	V_{OQ}	$V_C = 0$	5.8	6.1	6.4	V
[Hall Input-Output]						
Hall Amp Input Offset Voltage	$V_H \text{ offset}$		-5		+5	mV
Hall Amp Input Bias Current	$I_H \text{ bias}$			1	5	μA
Hall Amp Common-Mode	$V_H \text{ ch}$		1.3		3.7	V
Input Voltage Range						
Hall Input-Output Voltage Gain	G_{VHO}			43		dB
[Control-Output]						
Control-Output Drive Gain	G_{VCO}		38	41	44	dB
Control-Output CH Difference	ΔG_{VCO}		-2		+2	dB
[Motor Detection]						
Thermal Shutdown Temperature	T_{SD}	(See note.)	150	180	210	$^{\circ}C$
Thermal Shutdown Hysteresis	ΔT_{SD}	(See note.)		15		$^{\circ}C$

Note : Values shown are design targets only. No measurements have been taken.

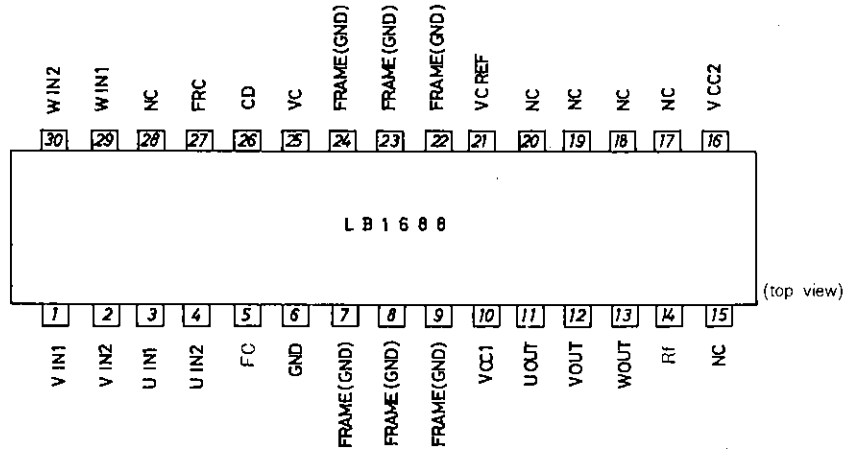
Equivalent Circuit Block Diagram

Unit (resistance: Ω , capacitance: F)



LB1688

Pin Assignment



Note : All FRAME pins are connected to GND.

Pin Description

Pin Name	Pin No.	Description
U _{IN1} , U _{IN2}	3, 4	U phase hall element input pin. 'H' of logic : $V_{IN1} > V_{IN2}$
V _{IN1} , V _{IN2}	1, 2	V phase hall element input pin. 'H' of logic : $V_{IN1} > V_{IN2}$
W _{IN1} , W _{IN2}	29, 30	W phase hall element input pin. 'H' of logic : $V_{IN1} > V_{IN2}$
U _{OUT}	11	U phase output pin
V _{OUT}	12	V phase output pin
W _{OUT}	13	W phase output pin
V _{CC1}	10	Power supply pin for applying output
V _{CC2}	16	Power supply pin for applying voltage to each section other than output section. This voltage must be stabilized to be free from ripple, noise, etc.
R _f	14	Output current detect pin. By connecting R _f across this pin and GND pin, output current is detected as voltage. The result is used to control the overcurrent protection circuit.
CD	26	Pin for fetching current (voltage) detected with R _f . Takes feedback from R _f to reduce output voltage gain. Ground when not in use.
FC	5	Frequency characteristic correction
V _C	25	Speed-phase control pin Control is of voltage-controlled type that controls output voltage.
V _{CREF}	21	Control reference voltage
GND	6	GND for other than output Minimum potential of output transistor is at R _f pin.
F/RC	27	Forward/reverse control pin By setting this pin to 'H' (more than 2.0V)/'L' (less than 0.3V), truth value is changed to perform forward/reverse rotation.

LB1688

Truth Table

	Source Sink	Input			Forward/Reverse Control F/R/C
		U	V	W	
1	W phase → V phase	H	H	L	L
	V phase → W phase				H
2	W phase → U phase	H	L	L	L
	U phase → W phase				H
3	V phase → W phase	L	L	H	L
	W phase → V phase				H
4	U phase → V phase	L	H	L	L
	V phase → U phase				H
5	V phase → U phase	H	L	H	L
	U phase → V phase				H
6	U phase → W phase	L	H	H	L
	W phase → U phase				H

Input:

H: High level. One of the inputs should have a potential at least 0.2V higher than the other.

L: Low level. One of the inputs should have a potential at least 0.2V lower than the other.

Forward/reverse control:

H: 2.0 to V_{CC2}

L: 0 to 0.3V

■ No products described or contained herein are intended for use in surgical implants, life-support systems, aerospace equipment, nuclear power control systems, vehicles, disaster/crime-prevention equipment and the like, the failure of which may directly or indirectly cause injury, death or property loss.

■ Anyone purchasing any products described or contained herein for an above-mentioned use shall:

① Accept full responsibility and indemnify and defend SANYO ELECTRIC CO., LTD., its affiliates, subsidiaries and distributors and all their officers and employees, jointly and severally, against any and all claims and litigation and all damages, cost and expenses associated with such use:

② Not impose any responsibility for any fault or negligence which may be cited in any such claim or litigation on SANYO ELECTRIC CO., LTD., its affiliates, subsidiaries and distributors or any of their officers and employees jointly or severally.

■ Information (including circuit diagrams and circuit parameters) herein is for example only; it is not guaranteed for volume production. SANYO believes information herein is accurate and reliable, but no guarantees are made or implied regarding its use or any infringements of intellectual property rights or other rights of third parties.