

Monolithic Digital IC

SANYO	NO.3178A	LB1721M
Thermal Head-Use, 8-Channel, Transistor Array		

Overview

The LB1721M is an 8-channel transistor array that has a low output saturation voltage and can be driven by a CMOS IC. It is especially suited for use in thermal head, LED drive applications.

Features

- Common-emitter 8-channel transistor array
- Low output saturation voltage
- On-chip base current limiting resistors
- Capable of being operated direct by TTL, CMOS IC
- Miniflat package

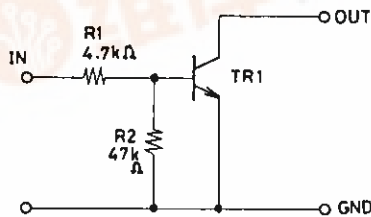
Absolute Maximum Ratings at Ta = 25°C

Parameter	Symbol	Value	unit
Output Supply Voltage	V _{OUT}	-0.5 to +18	V
Output Current	I _{OUT}	200	mA
Input Voltage	V _{IN}	-0.5 to +20	V
GND Pin Current	I _{GND}	900	mA
Allowable Power Dissipation	P _{d max}	465	mW
Operating Temperature	T _{opr}	-20 to +75	°C
Storage Temperature	T _{stg}	-40 to +125	°C

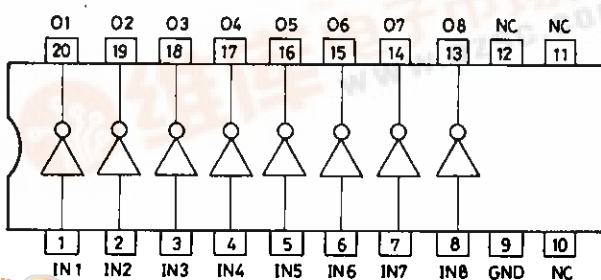
Electrical Characteristics at Ta = 25°C

Parameter	Symbol	Conditions	min	typ	max	unit
Output Voltage	V _O	V _{OL1} : I _O = 100mA, V _{IN} = 4.5V	0.1	0.18	0.3	V
		V _{OL2} : I _O = 100mA, V _{IN} = 4.5V, I _O = 800mA (other ch)	0.1	0.27	0.4	V
Output Leakage Current	I _{OH}	V _{IN} = 0V, V _O = 18V			10	μA
Input ON-State Current	I _{IN(on)}	V _{IN} = 5.5V		1.0	1.6	mA
Input ON-State Voltage	V _{IN(on)}	I _O = 20mA	2.0			V
Input OFF-State Voltage	V _{IN(off)}	I _O ≤ 10μA			0.4	V

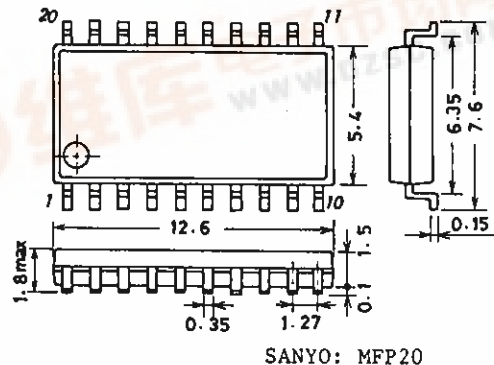
Equivalent Circuit (1 channel)



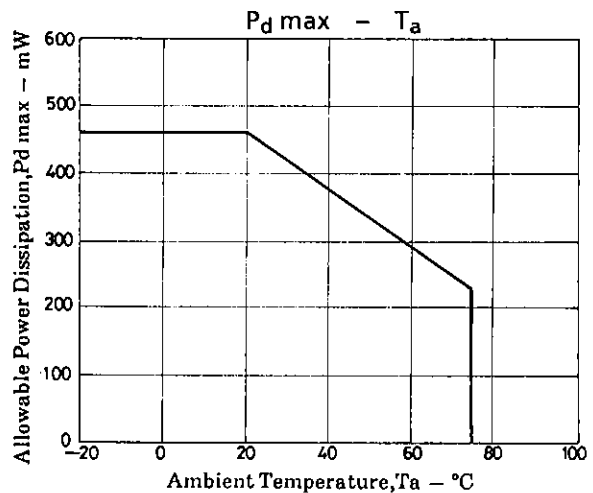
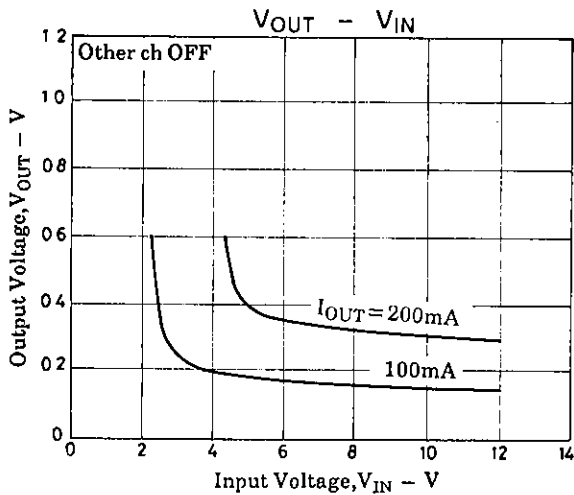
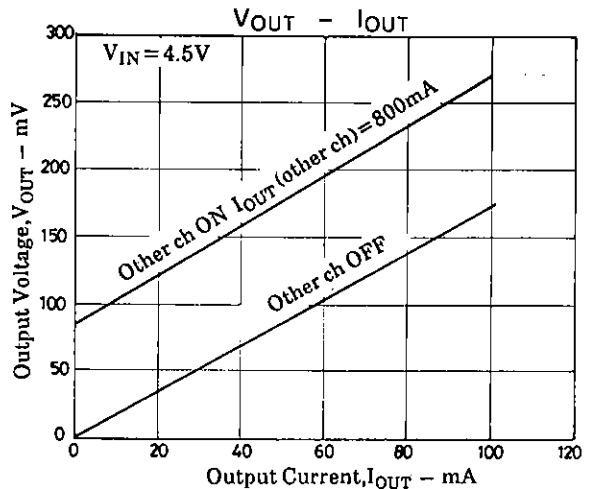
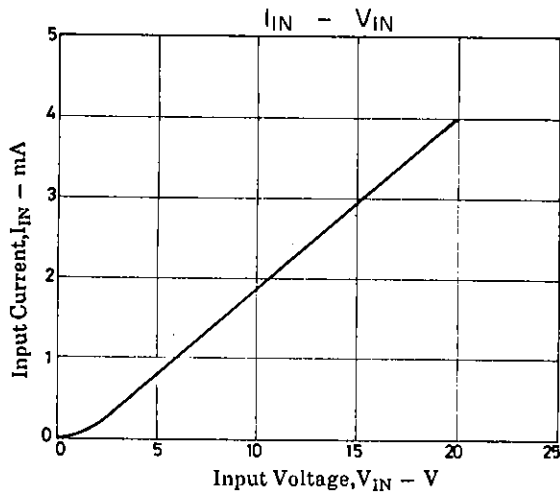
Pin Assignment



Package Dimensions 3036B-IC (unit: mm)



LB1721M



■ No products described or contained herein are intended for use in surgical implants, life-support systems, aerospace equipment, nuclear power control systems, vehicles, disaster/crime-prevention equipment and the like, the failure of which may directly or indirectly cause injury, death or property loss.

■ Anyone purchasing any products described or contained herein for an above-mentioned use shall:

- ① Accept full responsibility and indemnify and defend SANYO ELECTRIC CO., LTD., its affiliates, subsidiaries and distributors and all their officers and employees, jointly and severally, against any and all claims and litigation and all damages, cost and expenses associated with such use;
- ② Not impose any responsibility for any fault or negligence which may be cited in any such claim or litigation on SANYO ELECTRIC CO., LTD., its affiliates, subsidiaries and distributors or any of their officers and employees jointly or severally.

■ Information (including circuit diagrams and circuit parameters) herein is for example only; it is not guaranteed for volume production. SANYO believes information herein is accurate and reliable, but no guarantees are made or implied regarding its use or any infringements of intellectual property rights or other rights of third parties.