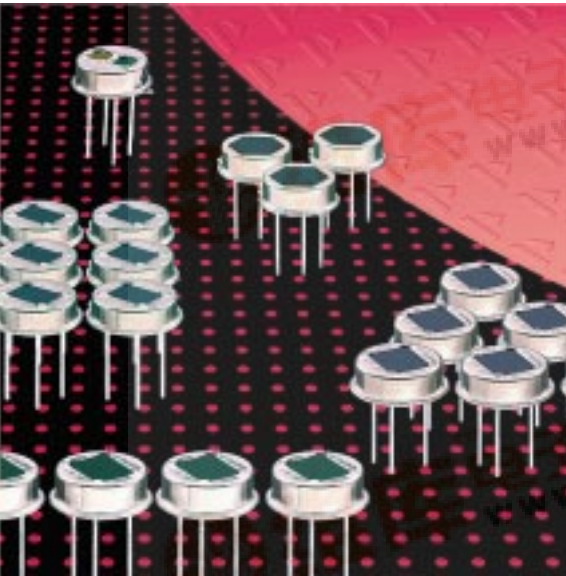


Pyroelectric Infrared Detectors

Twin Element Detector LHi 1548



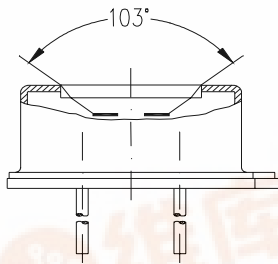
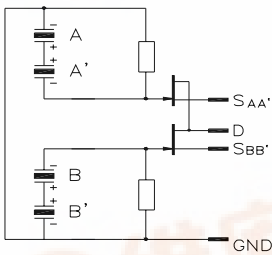
Four elements as two pairs

Two outputs, inverse polarity

Designed for PIR Alarm Systems

The **LHi 1548** pyroelectric infrared detector is designed for high end PIR alarm applications. It includes a twin type pyroelectric ceramic with 4 sensitive elements connected to two FET source follower circuits. Thus it provides for dual channel output. The channels are of inverse polarity.

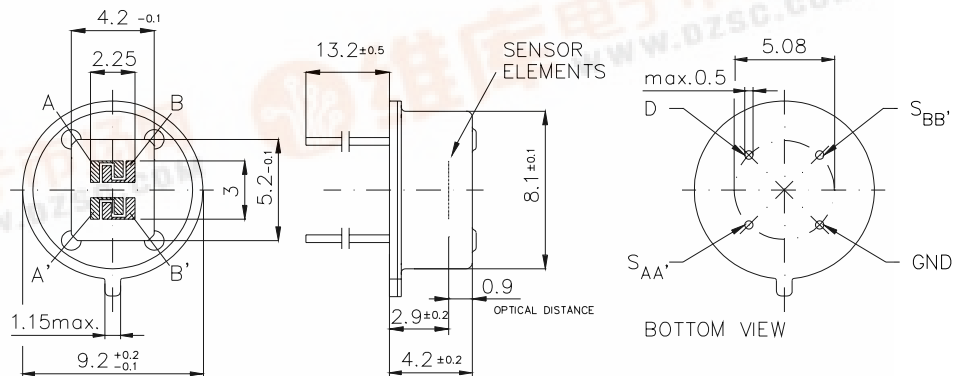
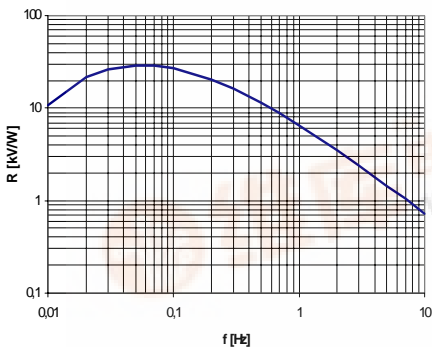
The **LHi 1548** detector is available in **TO-5** housing with standard infrared filter. It offers excellent common mode performance (match) and low noise



Field of view

Parameters	LHi 1548		units	condition
	min	typical max		
Element size		0,953	mm ²	(4 elements)
Responsivity	4200	5000	V/W	100°C, 1 Hz
Match		1	%	
Noise		30	75	µVpp 25°C, 0,3...10Hz
Offset Voltage	0,2	1,55	V	R _s =47kΩ, 25°C
NEP		8,6x10 ⁻¹⁰	28x10 ⁻¹⁰	W √Hz 1Hz Bw, 100°C, 1 Hz
D*	3,5x10 ⁷	11x10 ⁷	cm √Hz/W	1Hz Bw, 100°C, 1 Hz
Output Impedance		5	10	kΩ R _s =47kΩ, 25°C
Operating Voltage	2	15	V	R _s =47kΩ, 25°C
Field of View, horizontal		103°		unobstructed
vertical		96°		unobstructed
Operating Temp.	-40	85	°C	non permanent
Storage Temperature	-40	85	°C	non permanent

Right for modification reserved / WS / 29.6.2001



Dimensions in mm

