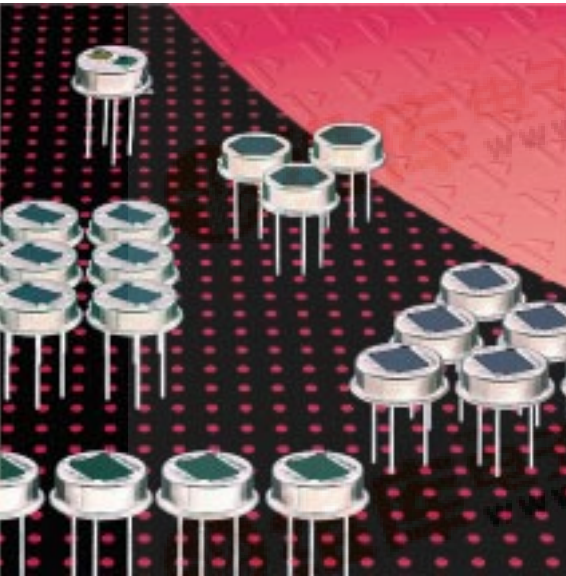


Pyroelectric Infrared Detectors

Dual Element Detectors LHi 954 / 958

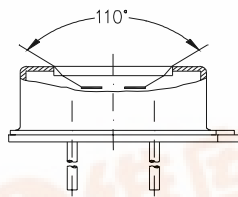
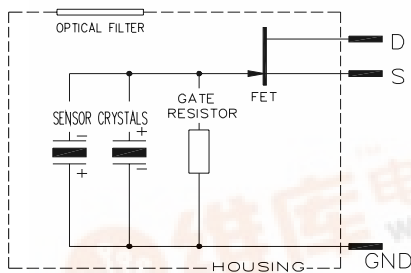


TO-39 / TO-5 housing

High reliability

Well proven design

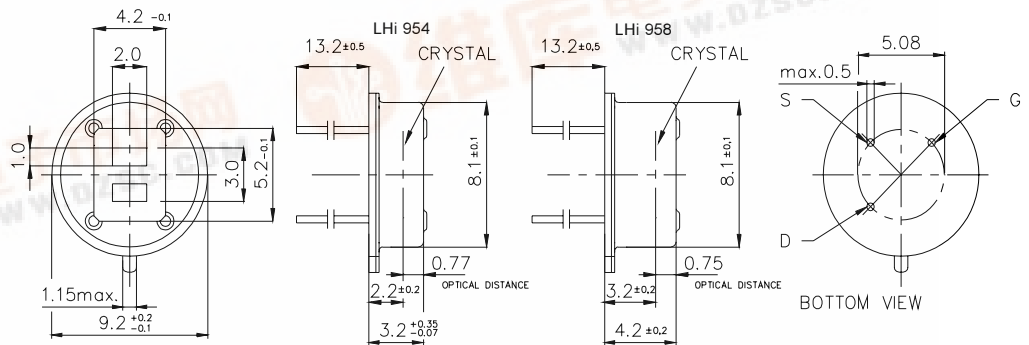
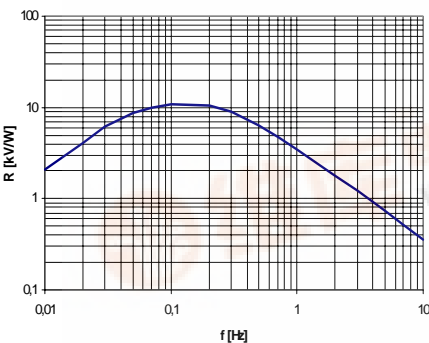
The **LHi 954** and **LHi 958** pyroelectric infrared-detectors have been a world standard for more than 10 years. They both are dual element types with FET in source follower connection. The **LHi 954** detector is available in **TO-39** housing with standard infrared filter whereas the **LHi 958** is the same detector in a **TO-5** housing with standard infrared filter. It offers a highly stable responsivity with excellent common mode performance (match) and low noise .



Field of View

Parameters	LHi		954 / 958		condition
	min	typical	max	units	
Element size		2x1		mm ²	(2 elements)
Responsivity	3000	3700		V/W	100°C, 1 Hz
Match		1	10	%	
Noise		20	50	µVpp	25°C, 0,3...10Hz
Offset Voltage	0,2		1,50	V	R _s =47kΩ, 25°C
NEP		8,1x10 ⁻¹⁰	25x10 ⁻¹⁰	W √Hz	1Hz Bw, 100°C, 1 Hz
D*		5,6x10 ⁷	17,5x10 ⁷	cm √Hz/W	1Hz Bw, 100°C, 1 Hz
Output Impedance		5	10	kΩ	R _s =47kΩ, 25°C.
Operating Voltage		2	15	V	R _s =47kΩ, 25°C
Field of View, horizontal		110°			unobstructed
Field of View, vertical		110°			unobstructed
Operating Temp.	-40		85	°C	non permanent
Storage Temperature	-40		85	°C	non permanent

Right for modification reserved / WS / . 29.6.2001



Dimensions in mm

