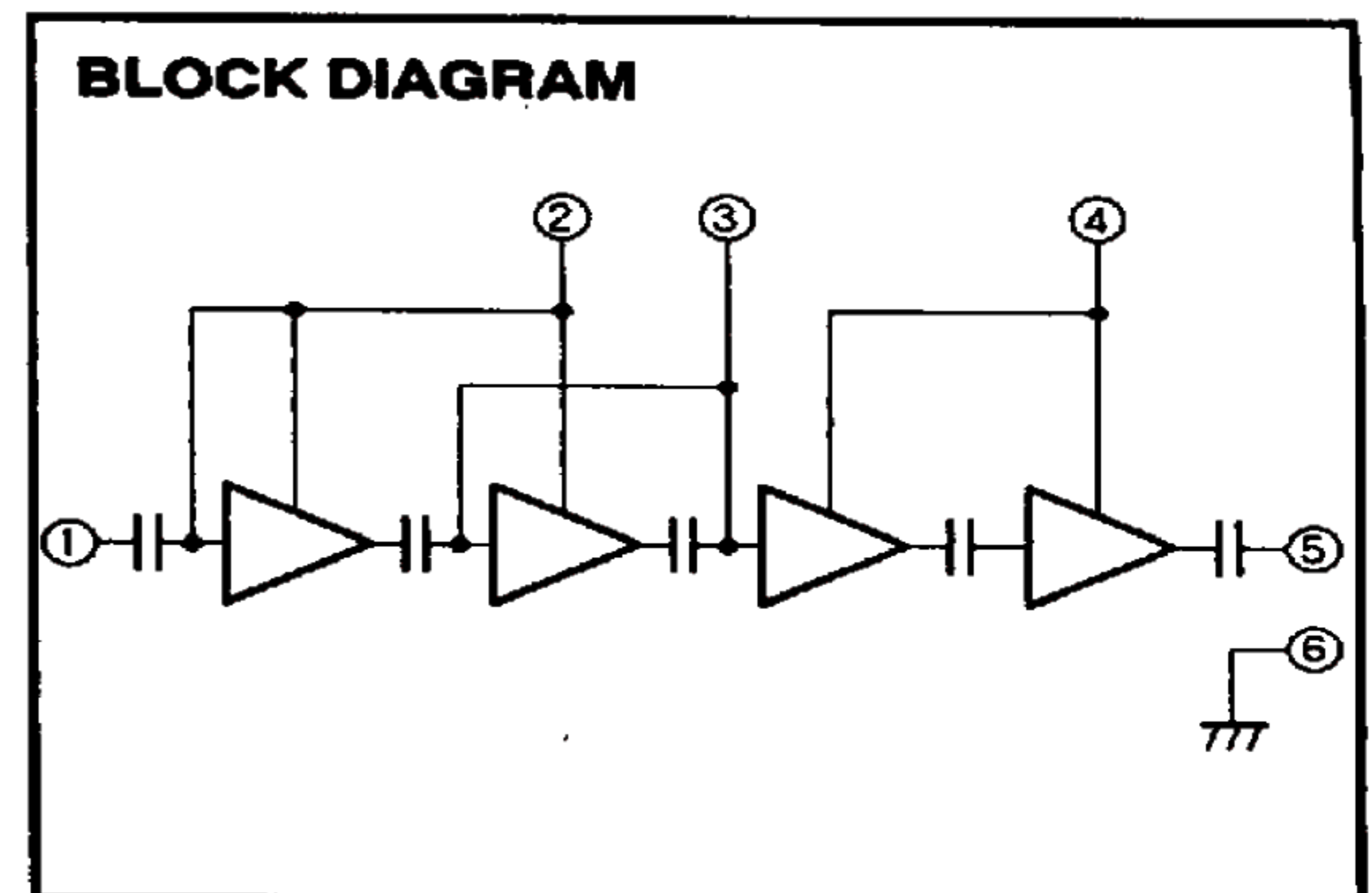
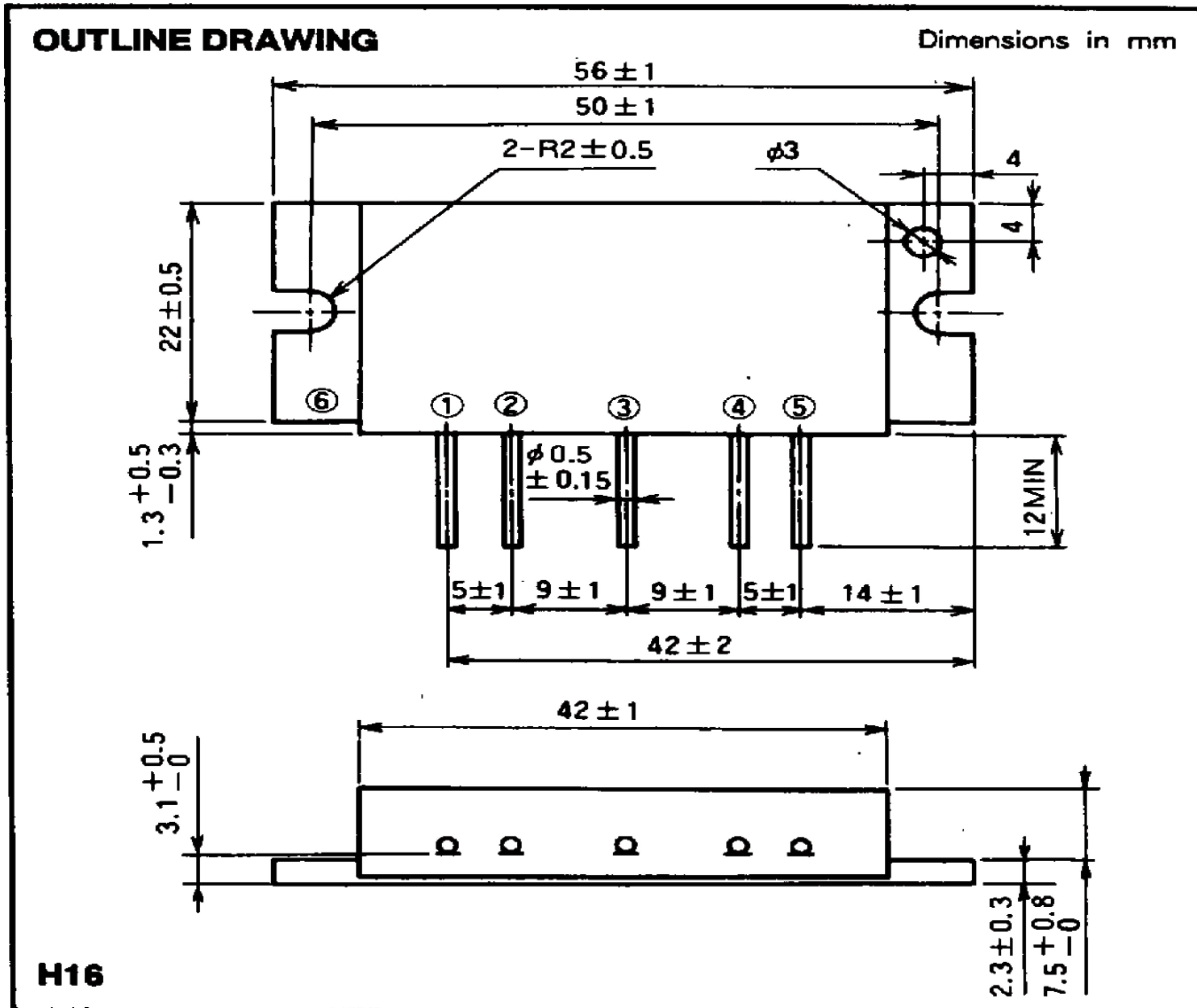


M67709

430-470MHz, 12.5V, 13W, FM MOBILE RADIO



- PIN :
- ① Pin : RF INPUT
 - ② VCC1 : 1st. DC SUPPLY
 - ③ VBB : BASE BIAS SUPPLY
 - ④ VCC2 : 2nd. DC SUPPLY
 - ⑤ Po : RF OUTPUT
 - ⑥ GND : FIN

ABSOLUTE MAXIMUM RATINGS (Tc = 25 °C unless otherwise noted)

Symbol	Parameter	Conditions	Ratings	Unit
Vcc	Supply voltage	V _{BB} ≤ 5V	16	V
V _{BB}	Base bias	V _{CC} ≤ 12.5V	6	V
I _{CC}	Total current		5	A
P _{in(max)}	Input power	Z _G = Z _L = 50 Ω	20	mW
P _{O(max)}	Output power	Z _G = Z _L = 50 Ω	20	W
T _{c(OP)}	Operation case temperature		- 30 to 110	°C
T _{stg}	Storage temperature		- 40 to 110	°C

Note. Above parameters are guaranteed independently.

ELECTRICAL CHARACTERISTICS (Tc = 25 °C unless otherwise noted)

Symbol	Parameter	Test conditions	Limits		Unit
			Min	Max	
f	Frequency range	P _{in} = 10mW V _{CC1, 2} = 12.5V V _{BB} = 5V Z _G = Z _L = 50 Ω	430	470	MHz
P _O	Output power		13		W
η _T	Total efficiency		35		%
2f _o	2nd. harmonic			- 30	dBc
3f _o	3rd. harmonic			- 35	dBc
ρ _{in}	Input VSWR			2.8	-
-	Load VSWR tolerance	V _{CC1} = 12.5V, V _{CC2} = 15.2V, V _{BB} = 5V P _O = 13W (P _{in} : controlled) Load VSWR=20:1(All phase), 2sec. Z _G = 50Ω	No degradation or destroy		-

Note. Above parameters, ratings, limits and conditions are subject to change.