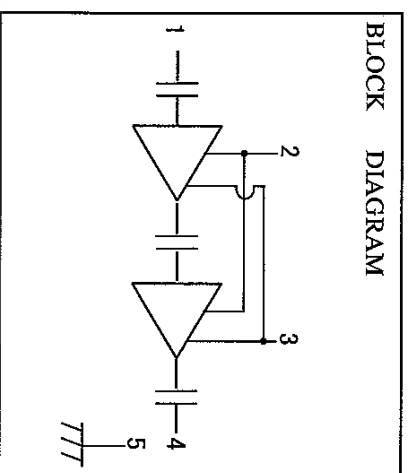
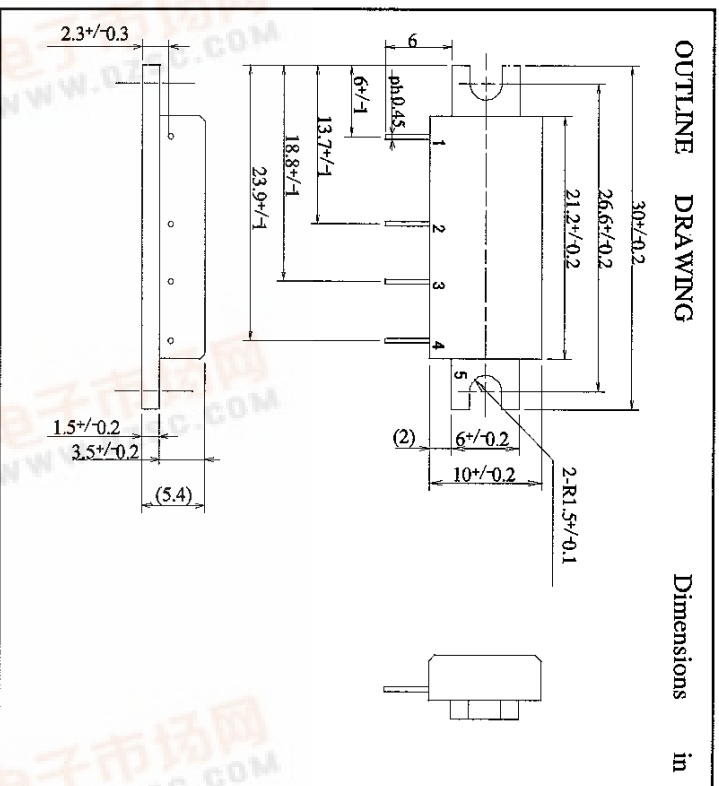


ATTENTION
OBSERVE PRECAUTIONS
FOR HANDLING
ELECTROSTATIC
SENSITIVE
DEVICES

Silicon MOS FET Power Amplifier, 218-250MHz 7.0W FM PORTABLE

MITSUBISHI RF POWER MODULE
M68779M

捷多邦, 专业PCB打样工厂, 24小时加急出货



- PIN:**
- 1. Pin : RF INPUT
 - 2. Vgg : GATE BIAS SUPPLY
 - 3. VDD : DRAIN BIAS SUPPLY
 - 4. Po : RF OUTPUT
 - 5. GND : FIN

MAXIMUM RATINGS (Tc=25deg.C UNLESS OTHERWISE NOTED)

SYMBOL	PARAMETER	CONDITIONS	RATINGS	UNIT
VDD	SUPPLY VOLTAGE	VGG<3.5V,Zg=Zl=50ohm	9.2	V
VGG	GATE BIAS VOLTAGE		4	V
Pin	INPUT POWER	f=218-250MHz,Zg=Zl=50ohm	50	mW
Po	OUTPUT POWER	f=218-250MHz,Zg=Zl=50ohm	10	W
Tc(OP)	OPERATION CASE TEMPERATURE	f=218-250MHz,Zg=Zl=50ohm	-30 to +100	deg.C
Tstg	STORAGE TEMPERATURE		-40 to +110	deg.C

Note: Above parameters are guaranteed independently.

ELECTRICAL CHARACTERISTICS (Tc=25deg.C,Zg=Zl=50ohm UNLESS OTHERWISE NOTED)

SYMBOL	PARAMETER	CONDITIONS	LIMITS		UNIT
			MIN	MAX	
f	FREQUENCY RANGE		218	250	MHz
Po	OUTPUT POWER	Vdd=7.2V, Vgg=3.5V, Pin=30mW	7.0		W
Bia	TOTAL EFFICIENCY	Po=6.0W, (Vgg=adj.), Pin=30mW,	45		%
2fo	2nd HARMONIC	Vdd=7.2V	-25		dBc
VSWR in	INPUT VSWR	Zg=50ohm, Vdd=6/7.2/9.2V, LOAD VSWR < 4:1			
	Stability	Pin=20/30/50mW, Po<8W			No parasitic oscillation
	LOAD VSWR TOLERANCE	Vdd=9.2V, Pin=30mW, Po=7.0W (Vgg ADJUST), ρ1=20:1			No degradation or destroy

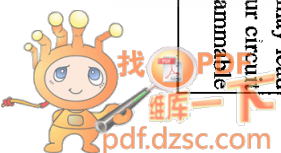
ABOVE PARAMETERS, RATINGS, LIMITS AND CONDITIONS ARE SUBJECT TO CHANGE.

Keep safety first in your circuit designs!

Mitsubishi Electric Corporation puts the maximum effort into making semiconductor products better and more reliable, but there is always the possibility that trouble may occur with them. Trouble with semiconductors may lead to personal injury, fire or property damage. Remember to give due consideration to safety when making your circuit designs, with appropriate measures such as (i) placement of substitutive, auxiliary circuits, (ii) use of non-flammable material or (iii) prevention against any malfunction or mishap.

(1/2)

查询M68779M供应商



TYPICAL PERFORMANCE DATA

