

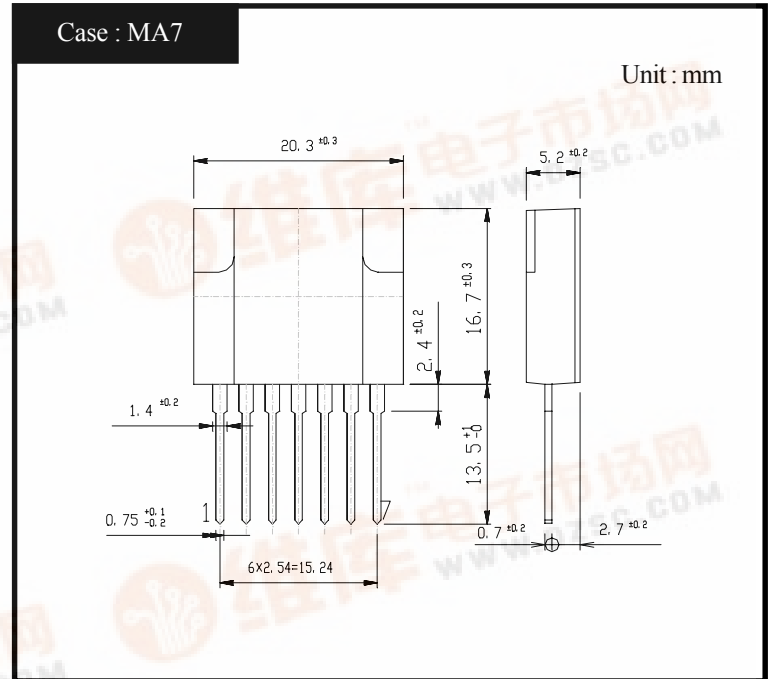
SHINDENGEN

Power Switching Regulators

MA1000 Series

MA1010

OUTLINE DIMENSIONS



RATINGS

●Absolute Maximum Ratings

Item	Symbol	Conditions	Ratings		Unit
			P Class	N Class	
Storage Temperature	Tstg		-30~125	-30~125	°C
Operating Temperature	Top	Case Temperature	-20~125	-20~125	°C
Junction Temperature	Tj		150	150	°C
Peak Input Voltage	Vin	②+,④- Fig.1 is Measurement Circuit of Peak Input Voltage Vin and Collector Cutoff Current I _{CEX} .	500	500	V
Input Current	Iin	Pulse Pulse Width 150 μs MAX, Duty 1/2, Sawtooth Wave, Peak Value, ②+,④-	6	6	A
Maximum Operating Frequency	f(max)		200	200	kHz
Maximum Power Dissipation	P _D	Ta=25°C	3	3	W
	P _D	Heatsink Tc=100°C	12	12	W
Dielectric Strength	Vdis	Terminals To Case AC 1 min	2	2	kV
Insulation Resistance		Terminals To Case 500VDC	100	100	MΩ
Fold Back Control Voltage	V _{CONT(max)}	Fold Control Resistance=0Ω Duty 1/2, ④,⑦	±8	±8	V
Fold Back Control Current	I _{CONT(max)}	④-,⑥+	100	100	mA

●Electrical Characteristics (Tc=25°C)

Item	Symbol	Conditions	Ratings		Unit
			P Class	N Class	
Q1	Collector Cutoff Current	I _{CEX} V _{CE} =500V, Fig.1 is Measurement Circuit of Peak Input Voltage Vin and Collector Cutoff Current I _{CEX} , ②+,④-	MAX 0.1	MAX 0.1	mA
	DC Current Gain	h _{FE} V _{CE} = 5V, I _C = 1.5A, ②+,④-,⑤I _B	15~30	10~20	
	Collector to Emitter Saturation Voltage	V _{CE(sat)} I _C =1.5A, I _B =0.3A, ②+,④-,⑤I _B	MAX 1.0	MAX 1.0	V
D1	Thermal Resistance	θ _{jc} Junction to Case	MAX 4.17	MAX 4.17	°C/W
	Reverse Current	I _R V _R =450V, ①+,②-	MAX 10	MAX 10	μA
	Forward Voltage	V _F I _F =0.6A, ①-,②+	MAX 1.7	MAX 1.7	V
Driving Saturation Voltage	V _{D(sat)}	I _C =1.5A, I _B =0.3A, ⑤+,④-	MIN 1.7	MIN 1.7	V
			MAX 2.3	MAX 2.3	



●Standard Operating Condition•Design Standard For Application Circuit

Item	Conditions	Ratings		Unit
		P Class	N Class	
Input Rated Voltage		AC90~132	AC90~132	V
Output Nominal Wattage		12	12	W
Output Nominal Voltage		12	12	V
Output Nominal Current		1	1	A

●Standard Operating Condition•Standard Operating Characteristics (Ta=25°C)

Item	Conditions	Ratings		Unit		
		P Class	N Class			
Minimum Input Full Load Output Voltage	Vin=90V, I _O =1A	12.0±0.6	12.0±0.6	V	Fig 2, ① Refer	
Maximum Input Light Load Output Voltage	Vin=132V, I _O =0.1A	12.0±0.6	12.0±0.6	V	Fig 2, ② Refer	
AC Input Voltage	I _O =1A	MAX 85	MAX 85	V		
Over Current Protection	Foldback Current	Vin=132V, V _O =10V	MAX 1.5	MAX 1.5	A	Fig 2, ③ Refer
	Short Circuit	Vin=132V, R _O =0.5Ω	Nodamage To Any Device, Automatic Recovery.		-	Fig 2, ④ Refer
Output Ripple Noise	Vin=90~132V, I _O =0.1~1A	MAX 150	MAX 150	mV P-P		

Figure in ○=Terminal Sign

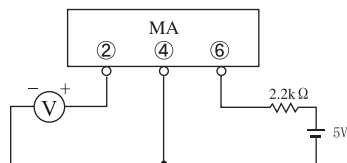


Fig1. Measurement Circuit

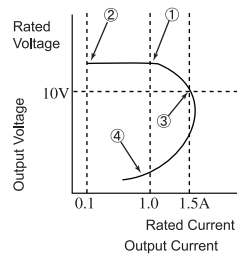
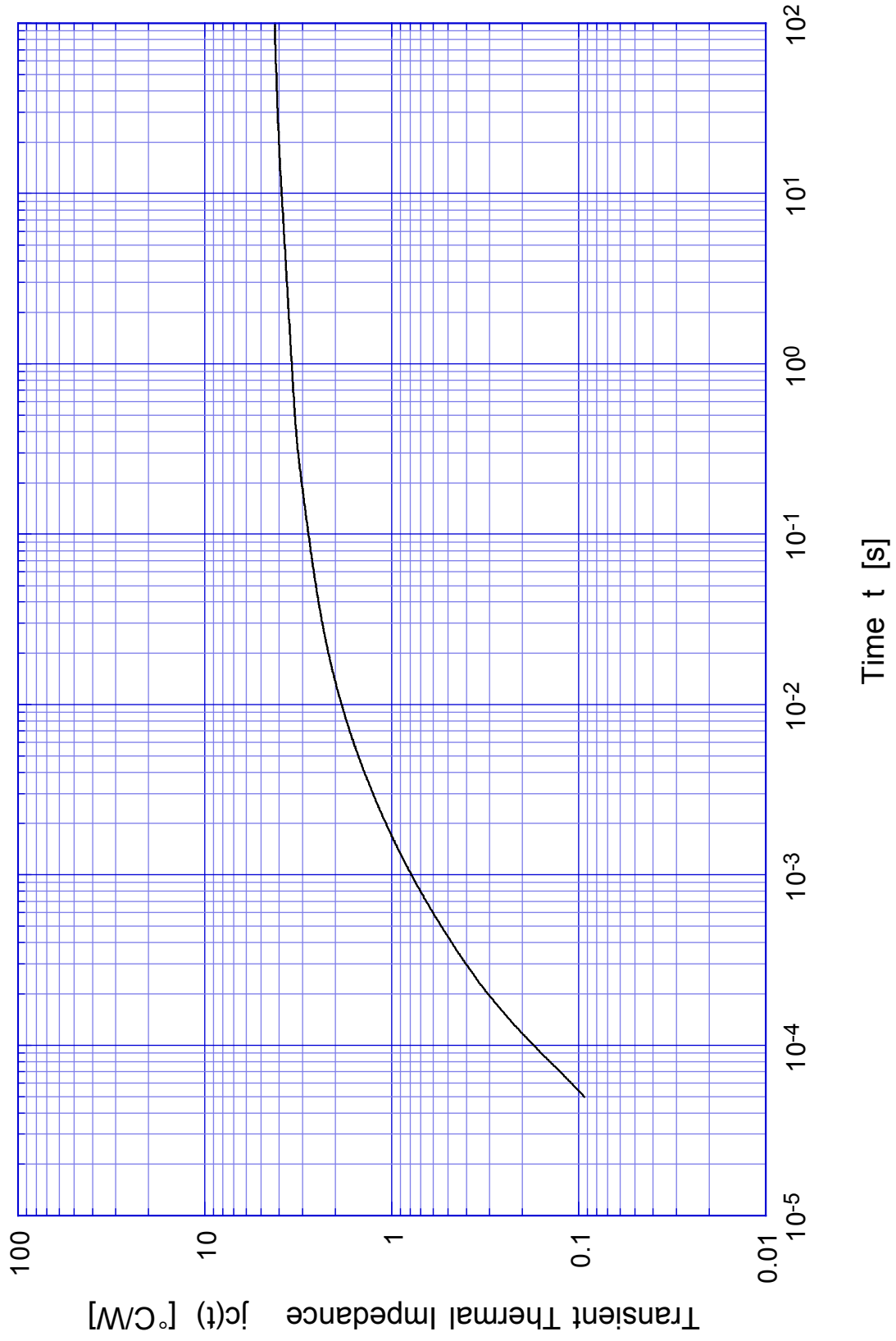


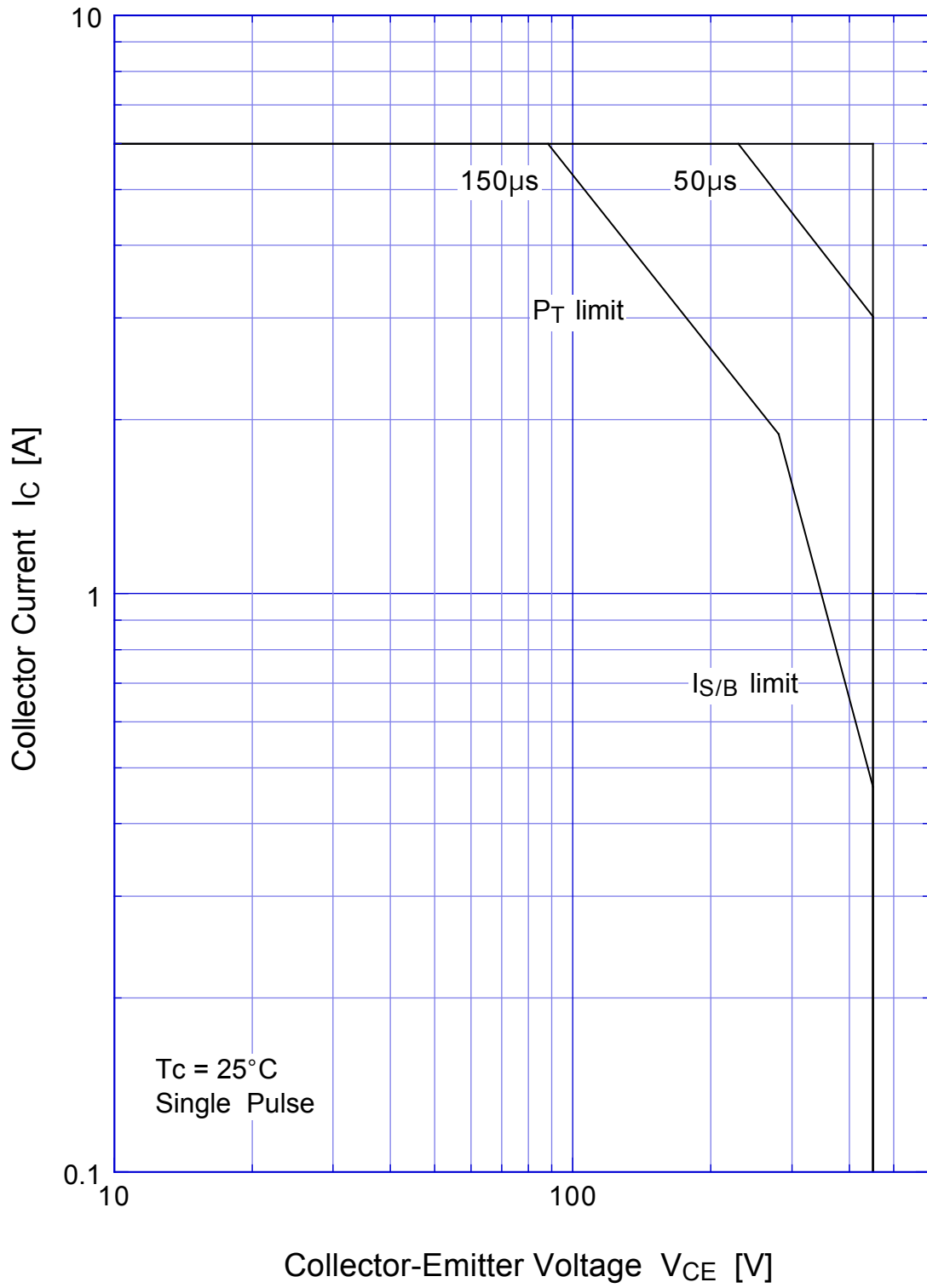
Fig2. Output Voltage/Current

MA1010 Transient Thermal Impedance



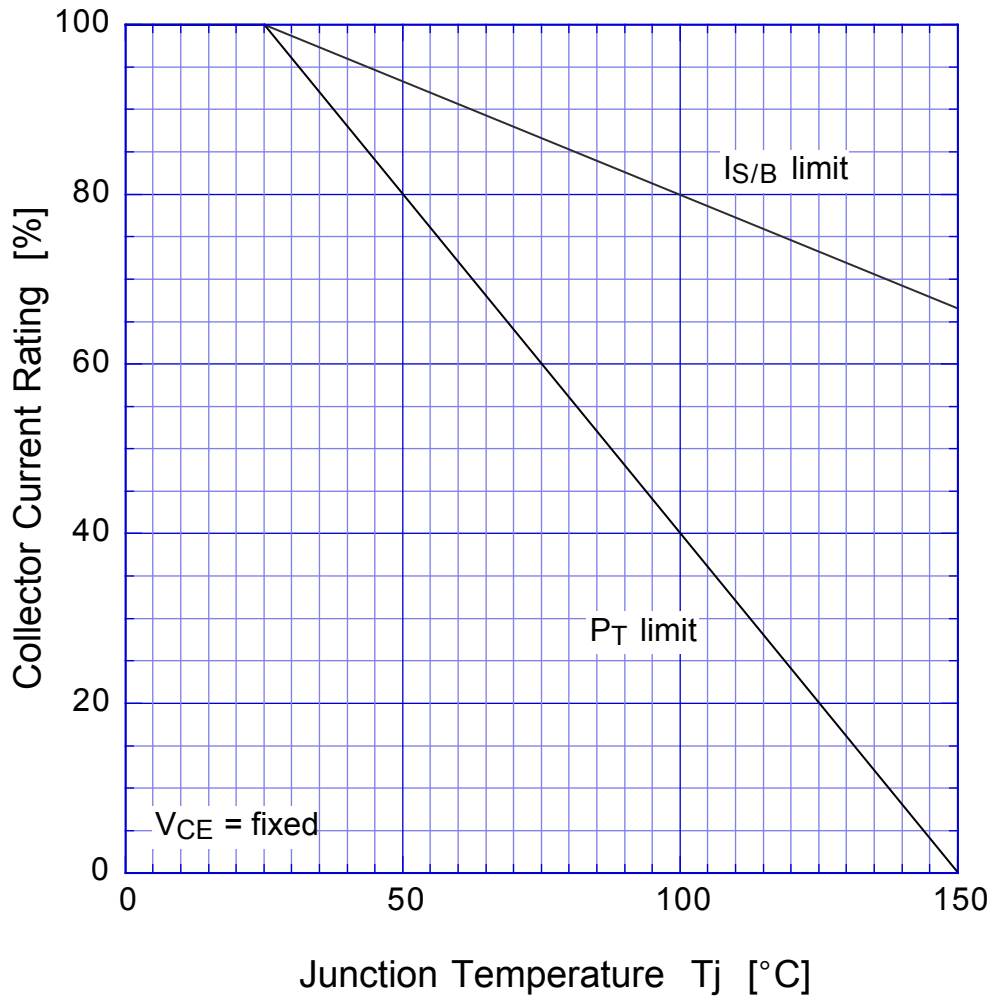
MA1010

Forward Bias SOA



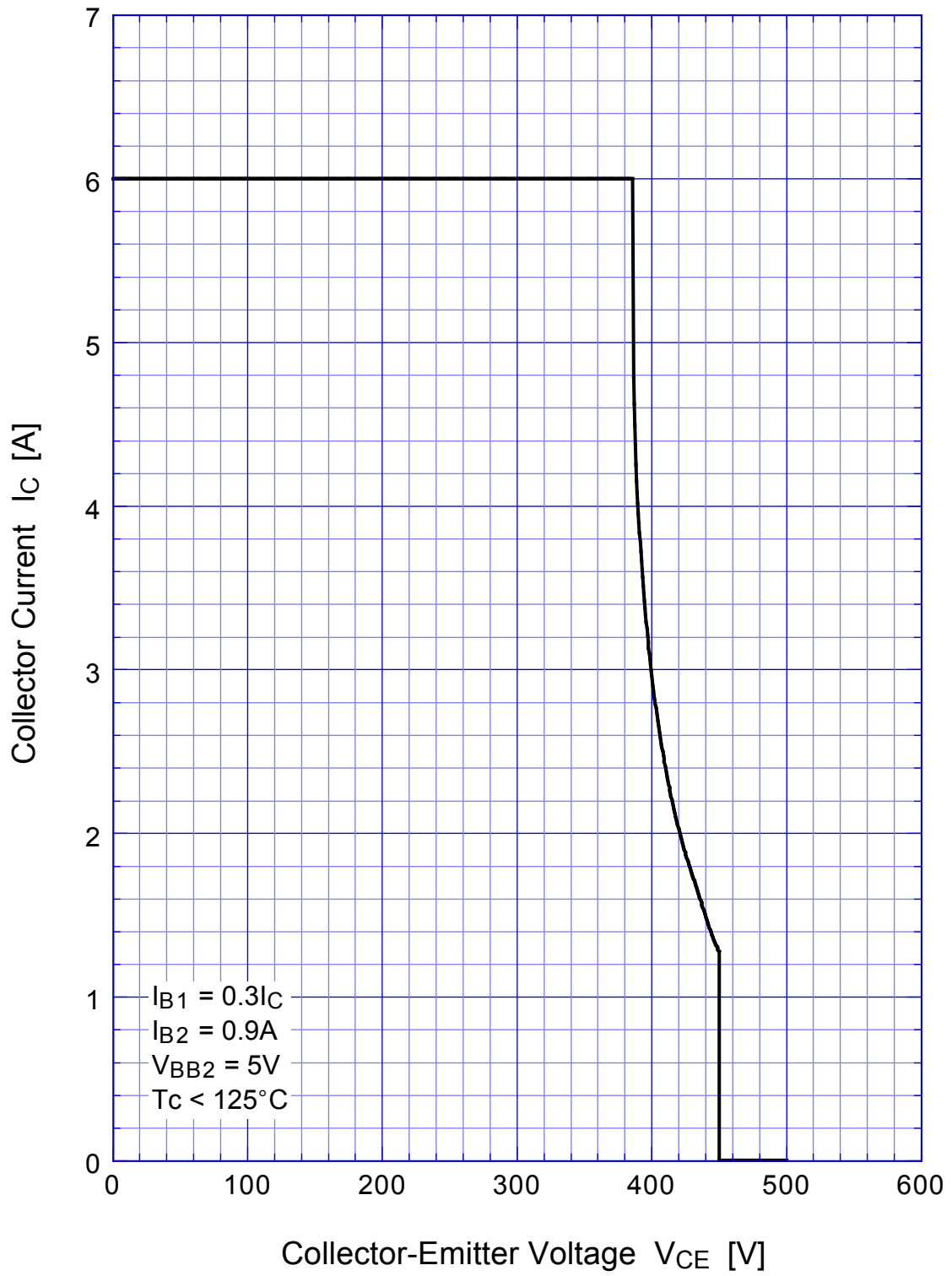
MA1010

Collector Current Derating



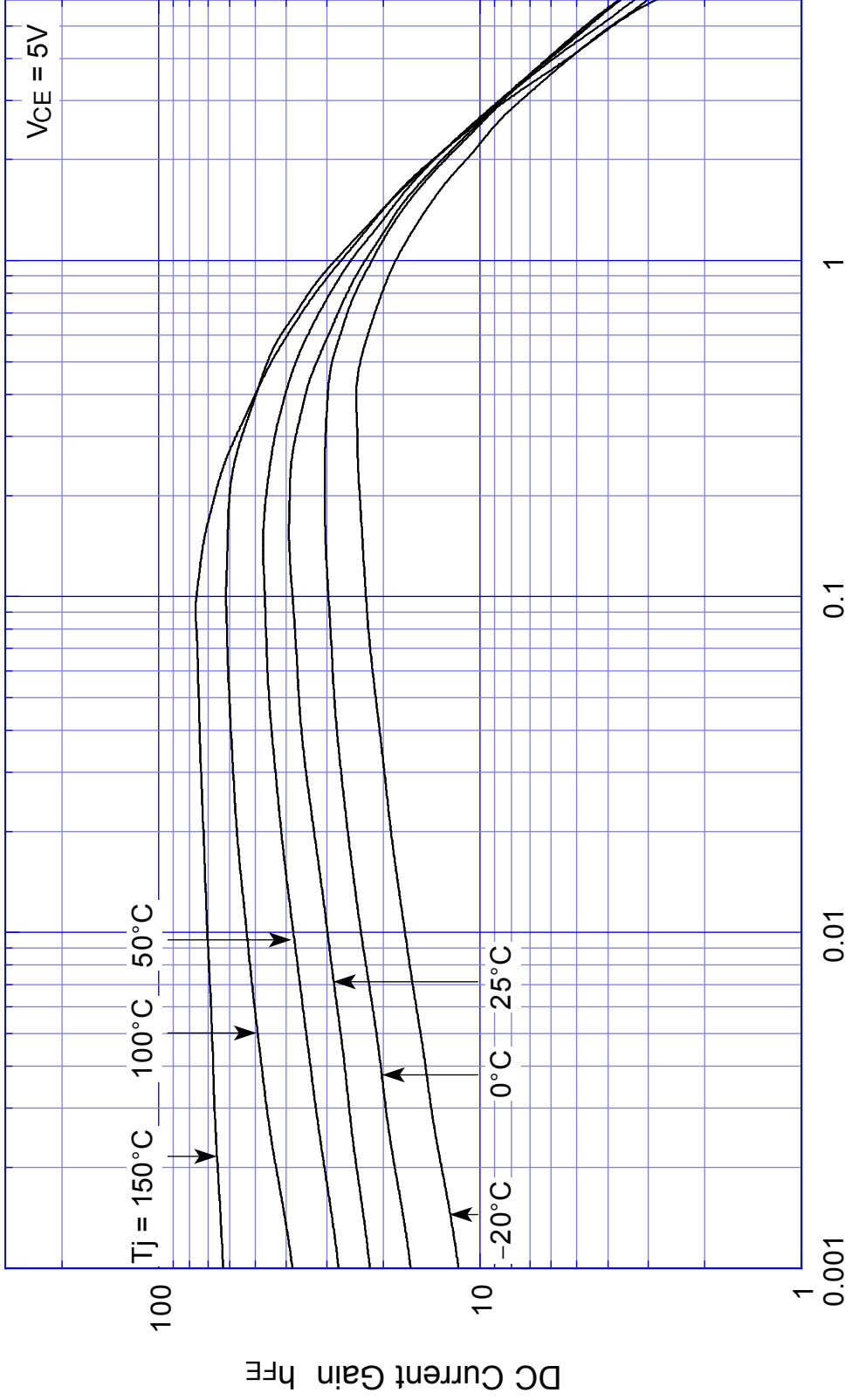
MA1010

Reverse Bias SOA



MA1010

$h_{FE} - I_C$



Collector Current I_C [A]