

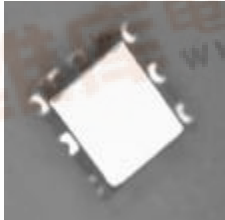
E-Series Surface Mount Mixer

5 – 1900 MHz

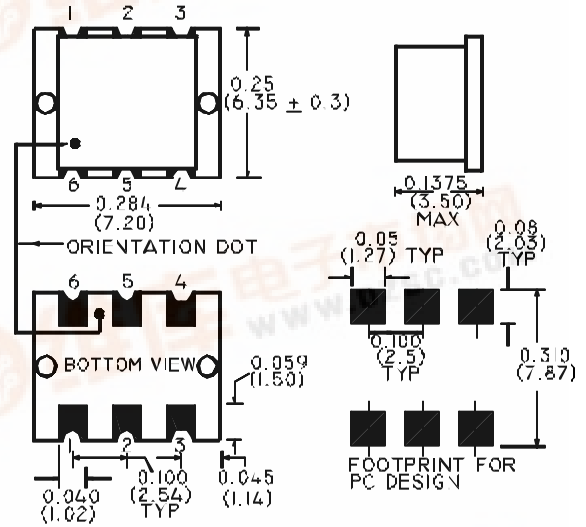


Features

- LO Power +7 dBm
- Up to +1 dBm RF
- Surface Mount



SM-134 Package



Description

M/A-COM's MAMXES0041 is a Low Cost, Broadband, high performance Double Balanced Mixer designed for use in high volume wireless applications. The device has been optimised by careful selection of the Schottky Diode and Balun Transformer for excellent performance. MAMXES0041 is available in an SM-134 surface mount package and reflows using standard soldering reflow profiles.

Electrical Specifications @ +25°C, Z₀ = 50 Ohms, LO = +7dBm

Parameter	Units	Minimum	Typical	Maximum
Frequency Range				
RF	5 - 1900	MHz	—	—
LO	5 - 1900	MHz	—	—
IF	5 - 1000	MHz	—	—
Conversion Loss				
10 - 950	dB	—	7.2	8.0
5 - 1900	dB	—	7.4	9.8
Isolation (LO - RF)				
5 - 50	MHz	45	50	—
50 - 950	MHz	25	37	—
950 - 1900	MHz	25	30	—
Isolation (LO - IF)				
5 - 50	MHz	45	56	—
50 - 950	MHz	25	40	—
950 - 1900	MHz	25	29	—
RF Input for 1dB Compression	dBm	—	—	+1



Absolute Maximum Ratings

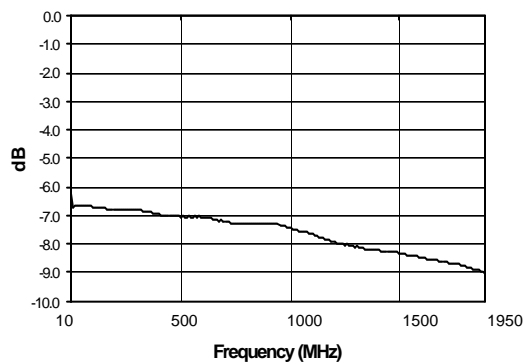
Parameter	Absolute Maximum
RF Power	150 mW
Peak IF Current	40 mA
Storage Temperature	-55°C to +100°C
Operating Temperature	-55°C to +100°C
Pin Temperature (10 Seconds)	260°C

Functional Configuration

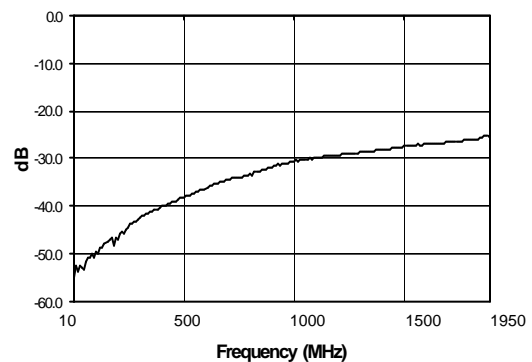
Function	Pin No.
LO	1
RF	5
IF	4
Ground	2, 3, 6
Case Ground	—
Unconnected	—

Typical Performance @ +25°C

Conversion Loss



L-R Isolation



L-X Isolation

