

GENERAL PURPOSE APPLICATION.  
SWITCHING APPLICATION.

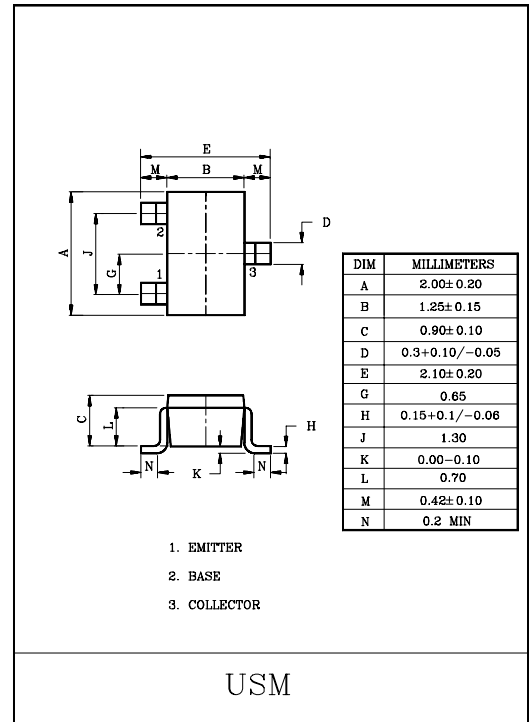
**FEATURES**

- Low Leakage Current  
:  $I_{CEX}=50nA(\text{Max.})$ ,  $I_{BL}=50nA(\text{Max.})$   
@  $V_{CE}=30V$ ,  $V_{EB}=3V$ .
- Excellent DC Current Gain Linearity.
- Low Saturation Voltage  
:  $V_{CE(sat)}=0.3V(\text{Max.})$  @  $I_C=50mA$ ,  $I_B=5mA$ .
- Low Collector Output Capacitance  
:  $C_{ob}=4pF(\text{Max.})$  @  $V_{CB}=5V$ .
- Complementary to 2N3906U.

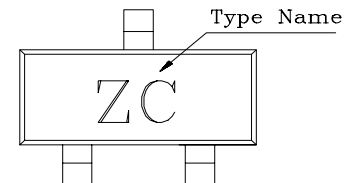
**MAXIMUM RATINGS (Ta=25°C)**

CHARACTERISTIC	SYMBOL	RATING	UNIT
Collector-Base Voltage	$V_{CBO}$	60	V
Collector-Emitter Voltage	$V_{CEO}$	40	V
Emitter-Base Voltage	$V_{EBO}$	6	V
Collector Current	$I_C$	200	mA
Base Current	$I_B$	50	mA
Collector Power Dissipation	$P_C$ *	100	mW
Junction Temperature	$T_j$	150	°C
Storage Temperature Range	$T_{sig}$	-55~150	°C

\*  $P_C$  : Package Mounted On 99.5% Alumina 10x8x0.6mm



**Marking**



# 2N3904U

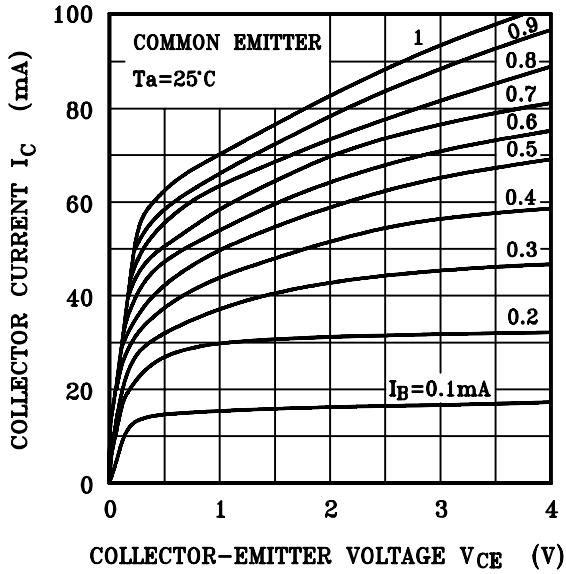
## ELECTRICAL CHARACTERISTICS (Ta=25°C)

CHARACTERISTIC	SYMBOL	TEST CONDITION	MIN.	TYP.	MAX.	UNIT			
Collector Cut-off Current	$I_{CEX}$	$V_{CE}=30V, V_{EB}=3V$	-	-	50	nA			
Base Cut-off Current	$I_{BL}$	$V_{CE}=30V, V_{EB}=3V$	-	-	50	nA			
Collector-Base Breakdown Voltage	$V_{(BR)CBO}$	$I_C=10\mu A, I_E=0$	60	-	-	V			
Collector-Emitter Breakdown Voltage *	$V_{(BR)CEO}$	$I_C=1mA, I_B=0$	40	-	-	V			
Emitter-Base Breakdown Voltage	$V_{(BR)EBO}$	$I_E=10\mu A, I_C=0$	6.0	-	-	V			
DC Current Gain *	$h_{FE(1)}$	$V_{CE}=1V, I_C=0.1mA$	40	-	-				
	$h_{FE(2)}$	$V_{CE}=1V, I_C=1mA$	70	-	-				
	$h_{FE(3)}$	$V_{CE}=1V, I_C=10mA$	100	-	300				
	$h_{FE(4)}$	$V_{CE}=1V, I_C=50mA$	60	-	-				
	$h_{FE(5)}$	$V_{CE}=1V, I_C=100mA$	30	-	-				
Collector-Emitter Saturation Voltage *	$V_{CE(sat)1}$	$I_C=10mA, I_B=1mA$	-	-	0.2	V			
	$V_{CE(sat)2}$	$I_C=50mA, I_B=5mA$	-	-	0.3				
Base-Emitter Saturation Voltage *	$V_{BE(sat)1}$	$I_C=10mA, I_B=1mA$	0.65	-	0.85	V			
	$V_{BE(sat)2}$	$I_C=50mA, I_B=5mA$	-	-	0.95				
Transition Frequency	$f_T$	$V_{CE}=20V, I_C=10mA, f=100MHz$	300	-	-	MHz			
Collector Output Capacitance	$C_{ob}$	$V_{CB}=5V, I_E=0, f=1MHz$	-	-	4.0	pF			
Input Capacitance	$C_{ib}$	$V_{BE}=0.5V, I_C=0, f=1MHz$	-	-	8.0	pF			
Input Impedance	$h_{ib}$	$V_{CE}=10V, I_C=1mA, f=1kHz$	1.0	-	10	k $\Omega$			
Voltage Feedback Ratio	$h_{re}$		0.5	-	8.0	x10			
Small-Signal Current Gain	$h_{fe}$		100	-	400				
Collector Output Admittance	$h_{oe}$		1.0	-	40	$\mu S$			
Noise Figure	NF		$V_{CE}=5V, I_C=0.1mA$ $R_g=1k\Omega, f=10Hz \sim 15.7kHz$	-	-	5.0	dB		
Switching Time	Delay Time	$t_d$				-	-	35	nS
	Rise Time	$t_r$				-	-	35	
	Storage Time	$t_{stg}$				-	-	200	
	Fall Time	$t_f$				-	-	50	

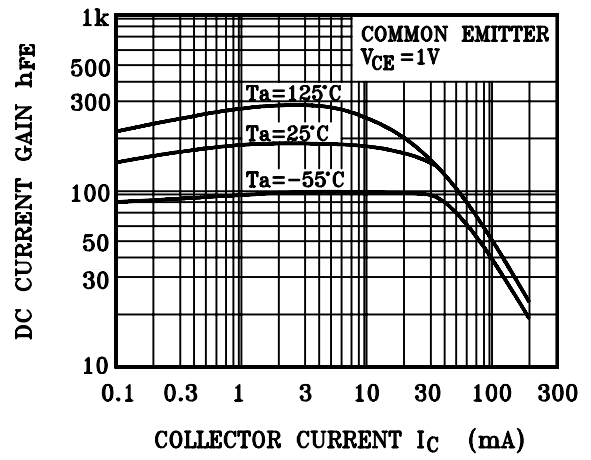
\*Pulse Test : Pulse Width  $\leq 300\mu S$ , Duty Cycle  $\leq 2\%$

# 2N3904U

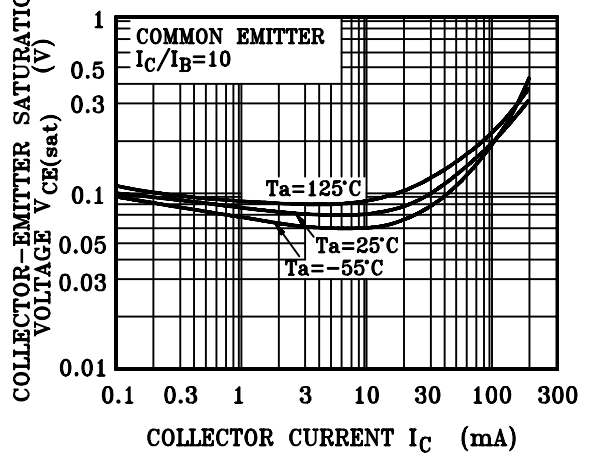
$I_C - V_{CE}$



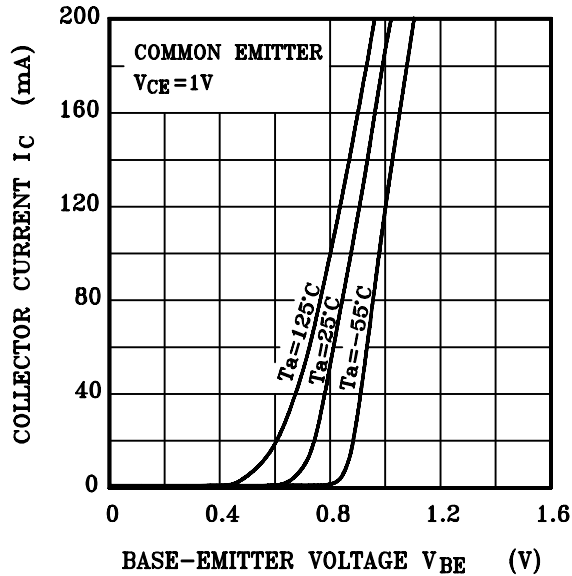
$h_{FE} - I_C$



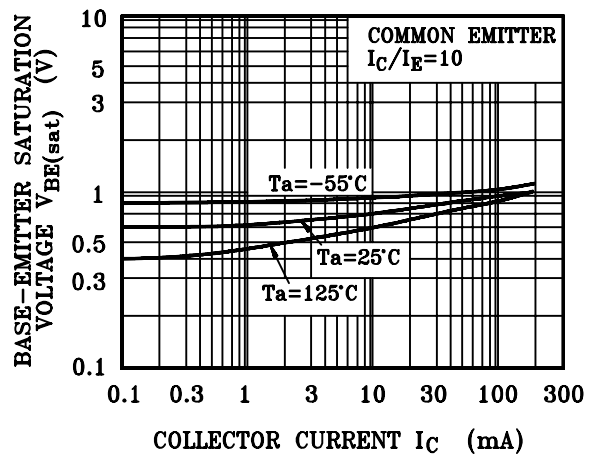
$V_{CE(sat)} - I_C$



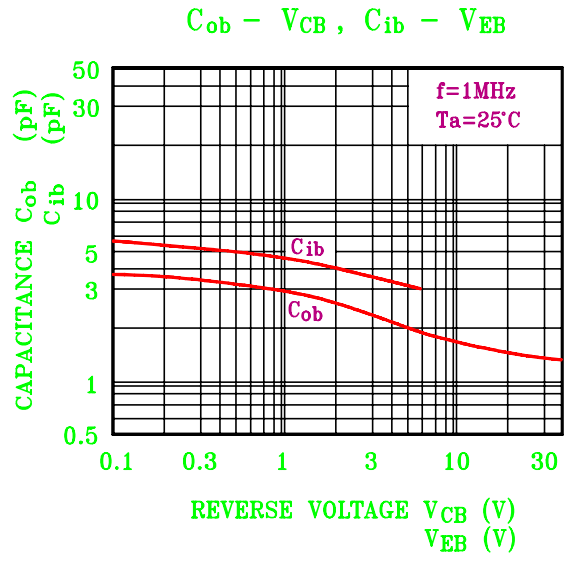
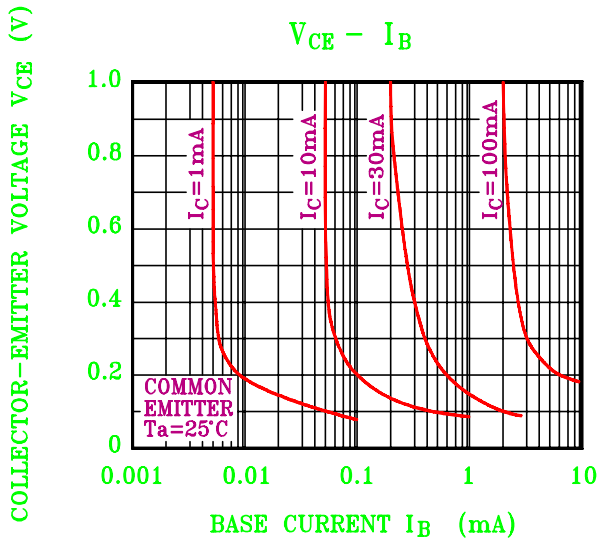
$I_C - V_{BE}$



$V_{BE(sat)} - I_C$



# 2N3904U



Copyright © Each Manufacturing Company.

All Datasheets cannot be modified without permission.

This datasheet has been download from :

[www.AllDataSheet.com](http://www.AllDataSheet.com)

100% Free DataSheet Search Site.

Free Download.

No Register.

Fast Search System.

[www.AllDataSheet.com](http://www.AllDataSheet.com)