

2,000 V - 5,000 V Rectifiers
2.0 A - 5.0 A Forward Current
70 ns Recovery Time

1N6513U
1N6515U
1N6517U

SURFACE MOUNT
HERMETICALLY SEALED



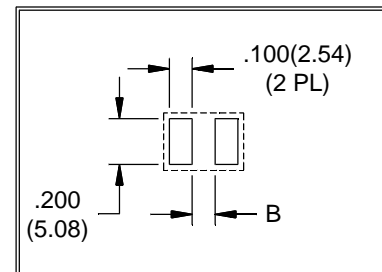
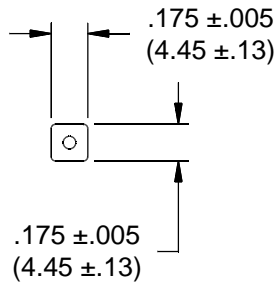
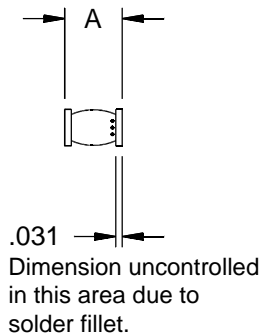
JANTX JANTXV

ELECTRICAL CHARACTERISTICS AND MAXIMUM RATINGS

Part Number	Working Reverse Voltage (Vrwm)	Average Rectified Current (Io)		Reverse Current @ Vrwm (Ir)		Forward Voltage (Vf)		1 Cycle Surge Current tp=8.3ms (Ifsm)	Repetitive Surge Current (Ifrm)	Reverse Recovery Time (3) (Trr)	Thermal Impd. θJ-C	Junction Cap. @50VDC @1kHz (Cj)
		55°C(1)	100°C(2)	25°C	100°C	25°C	25°C					
	Volts	Amps	Amps	µA	µA	Volts	Amps	Amps	Amps	ns	°C/ W	pF
1N6513U	2000	5.0	3.3	1.0	25	3.5	2.0	100	15	70	4	25
1N6515U	3000	3.5	2.3	1.0	25	6.0	1.5	60	10	70	4	20
1N6517U	5000	2.0	1.3	1.0	25	8.0	1.0	40	8	70	4	16

(1)TC=55°C (2)TC=100°C (3)If=0.5A, Ir=1.0A, Irr=0.25A *Op. Temp.= -65°C to +175°C Stg. Temp.= -65°C to +200°C

Markings:
 Three Dots for polarity.



Part	A	B
1N6513U	.235 ±.010 (5.97 ±.25)	.105(2.67)
1N6515U	.255 ±.010 (6.48 ±.25)	.125(3.18)
1N6517U	.275 ±.010 (6.99 ±.25)	.145(3.68)



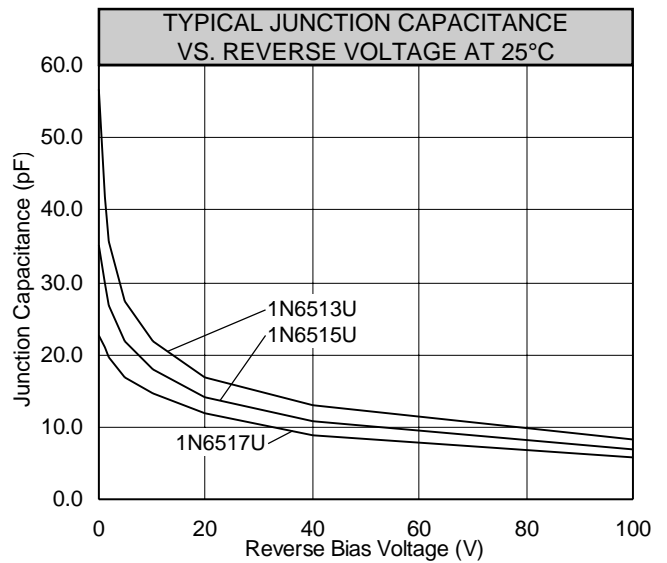
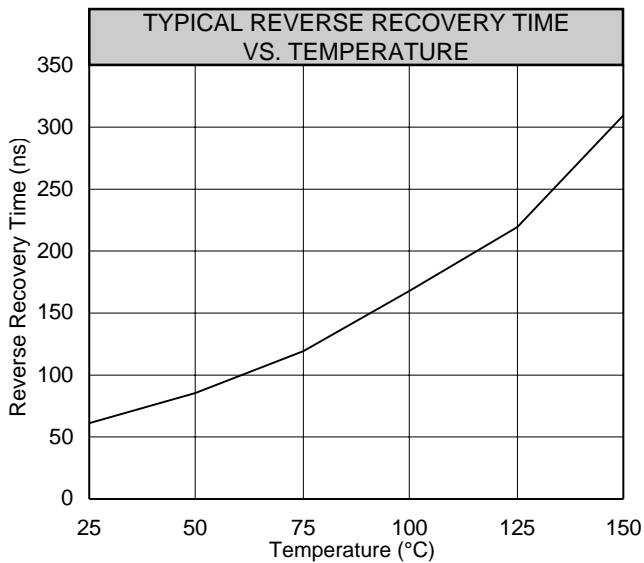
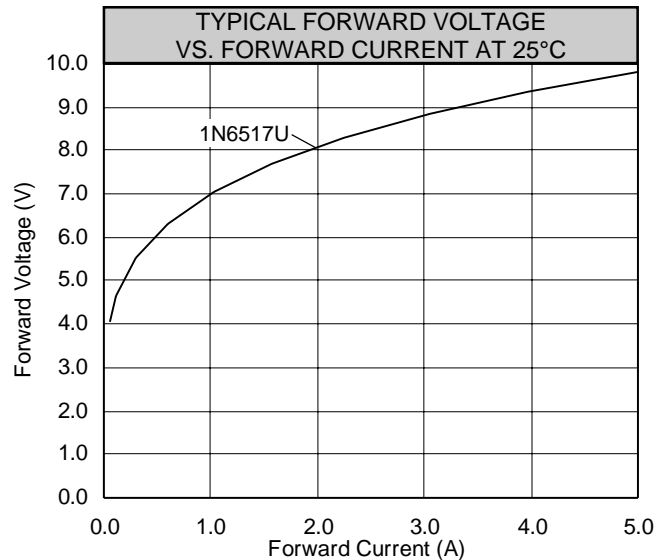
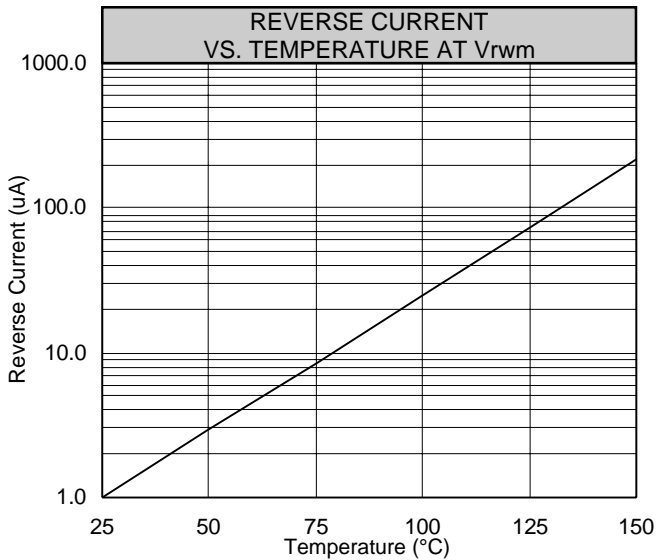
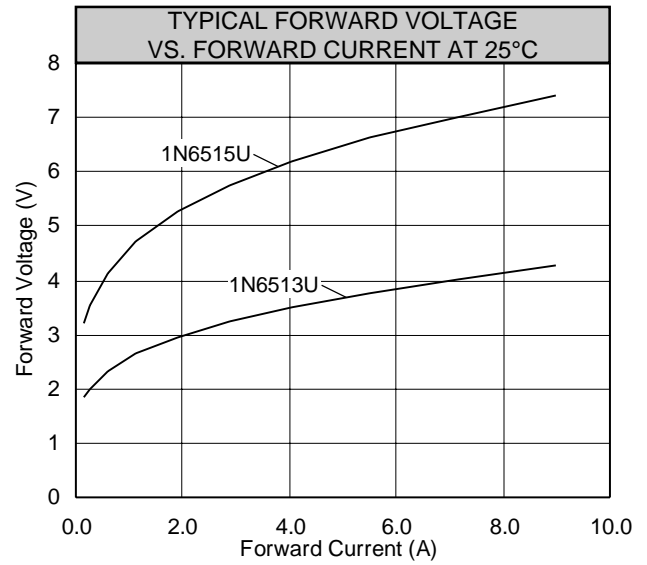
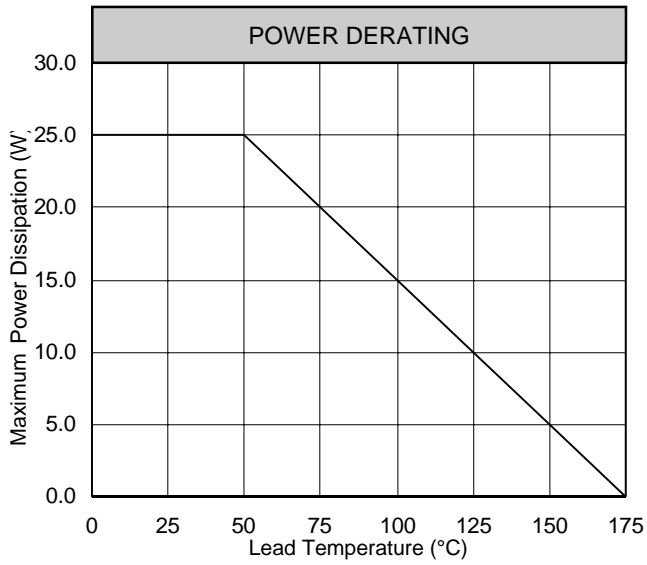
Dimensions: In. (mm) • All temperatures are ambient unless otherwise noted. • Data subject to change without notice.



VOLTAGE MULTIPLIERS INC.
 8711 W. Roosevelt Ave.
 Visalia, CA 93291

TEL 559-651-1402
 FAX 559-651-0740
 www.voltagemultipliers.com

1N6513U 1N6515U 1N6517U



Copyright © Each Manufacturing Company.

All Datasheets cannot be modified without permission.

This datasheet has been download from :

www.AllDataSheet.com

100% Free DataSheet Search Site.

Free Download.

No Register.

Fast Search System.

www.AllDataSheet.com