

LOW VOLTAGE DUAL POWER AMPLIFIER

■ GENERAL DESCRIPTION

The NJM2096 is a dual power amplifier, which operates with 1.0V minimum supply voltage. The NJM2096 is suitable to small radio and head-phone stereo. The NJM2096 is resemble to the NJM2076, but two amplifiers are the same.

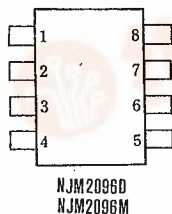
■ FEATURES

- Low Operating Voltage (1.0V min)
- Minimum external components
- Low Operating Current
- Package Outline DIP8, DMP8, SIP9
- Bipolar Technology

■ APPLICATION

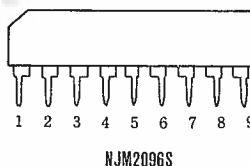
- Head-phone Stereo, Portable Radio, Portable TV, Hand-carry Tele-communication Set.

■ PIN CONFIGURATION



PIN FUNCTION

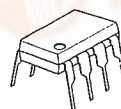
1. Non-Inverting Amp. Input (A)
2. Non-Inverting Amp. Input (B)
3. V⁺
4. Base (B)
5. (B) Output
6. GND
7. (A) Output
8. Base (A)



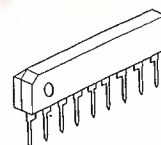
PIN FUNCTION

1. V⁺
2. Base (B)
3. (B) Output
4. Power GND
5. GND
6. (A) Output
7. Base (A)
8. Non-Inverting Amp. Input (A)
9. Non-Inverting Amp. Input (B)

■ PACKAGE OUTLINE



NJM 2096 D



NJM 2096 S



NJM 2096 M

■ ABSOLUTE MAXIMUM RATINGS

(Ta=25℃)

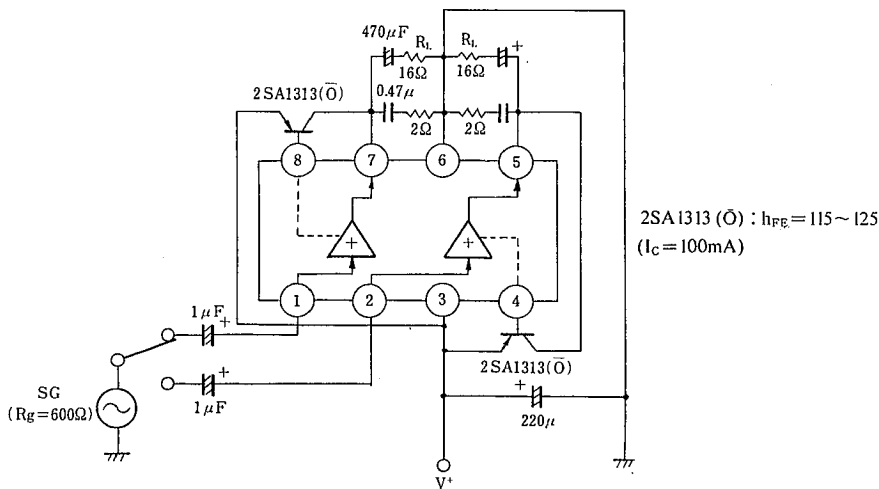
PARAMETER	SYMBOL	RATINGS	UNIT
Supply Voltage	V*	4.5	V
Power Dissipation	Pd	(DIP8) 500 (SIP9) 500 (DMP8) 300	mW
Maximum Input Signal	VIN	200	mVrms
Operating Temperature Range	Topr	-20~+75	℃
Storage Temperature Range	Tstg	-40~+125	℃

■ ELECTRICAL CHARACTERISTICS

(Ta=25℃, V*=1.5V, RL=16Ω)

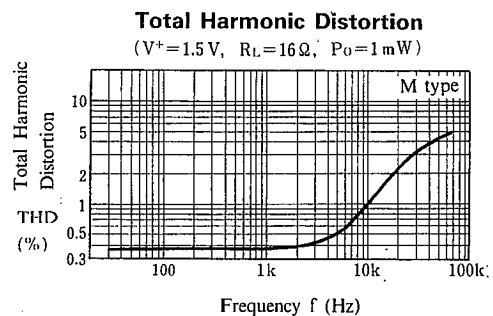
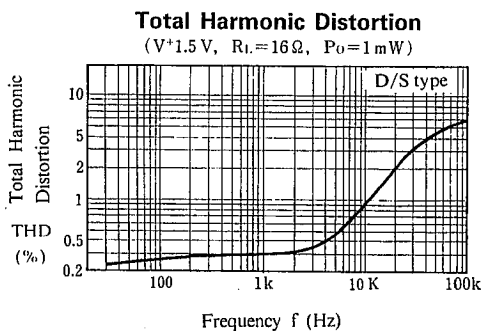
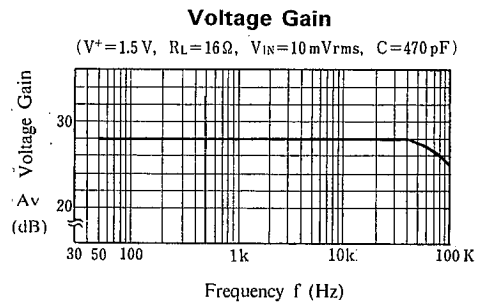
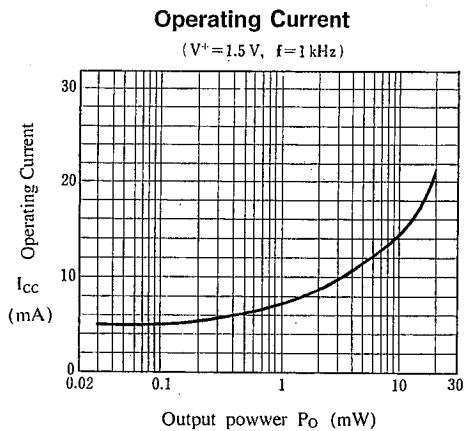
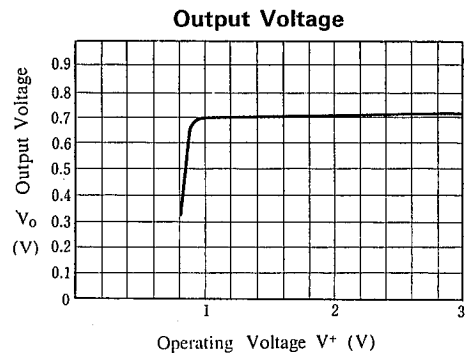
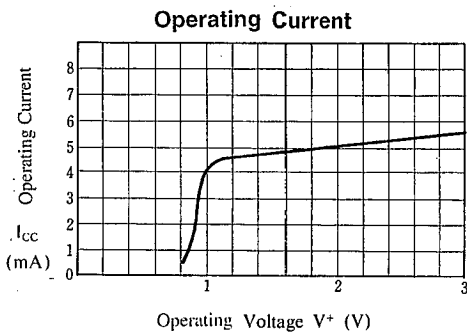
PARAMETER	SYMBOL	TEST CONDITION	MIN.	TYP.	MAX.	UNIT
Operating Current	Icc	VIN=Open	—	4.7	7	mA
Maximum Output Power	POI	THD=10% D&S M	15	20	—	mW
			15	17.5	—	mW
Max. Output Power at Low Supply Voltage	PO	THD=10%, V*= 1.0V	—	3	—	mW
Voltage Gain	Av	VIN=10mVrms	26.5	28	29.5	dB
Total Harmonic Distortion	THD	PO=1mW	—	0.4	0.8	%
Ripple Rejection Ratio	RR	Rg=0Ω, Vr =30mVrms. Fr =1kHz	25	35	—	dB
Input Resistance	RIN		25	33	43	kΩ
Output Noise Voltage	VNO	Rg=0Ω, A Curve	—	40	150	μV
Output Pin Voltage	VO (DC)		0.62	0.70	0.77	V
Voltage Difference between Two Output Pins	ΔVO (DC)		—	—	50	mV

■ TEST CIRCUIT

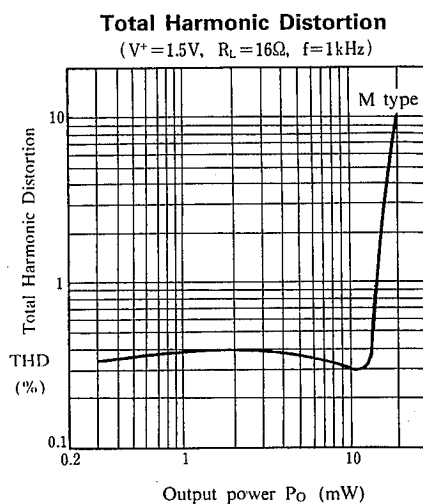
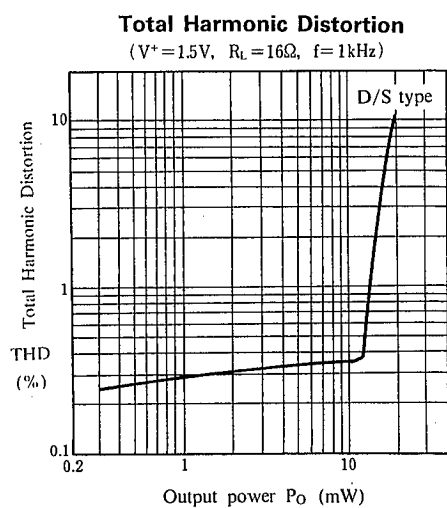


NJM2096

■ TYPICAL CHARACTERISTICS



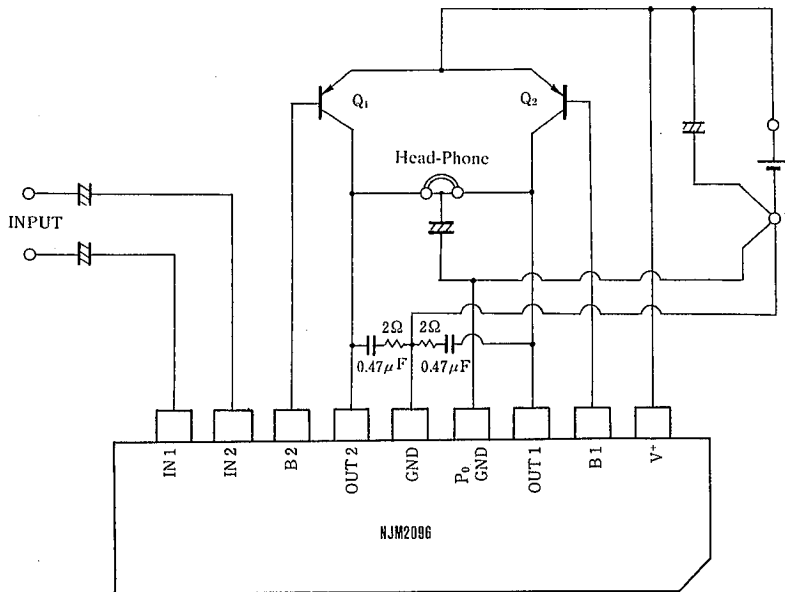
■ TYPICAL CHARACTERISTICS



NJM2096

■ TYPICAL APPLICATION

Stereo Head-Phone



■ NOTICE

(1) External PNP Transistor

Maximum output power becomes large with low saturation voltage transistor, and so select transistor of low saturation voltage.
 h_{FE} : 120

(2) External Frequency Compensation

Recommend tantalum capacitor with low $\tan \delta$ (less than 0.25 at $f=10\text{kHz}$) and 2Ω resistor. Stable with large capacitor of less high frequency distortion and worse $\tan \delta$. For example: $1\mu\text{F}$, $\tan \delta \leq 0.6$

(3) Layout on PCB

Be careful to get maximum output power and low distortion set.

DIP/DMP: Signal ground has to be close to IC ground pin. Impedance of ground line must be low.

SIP: Two terminals (Power GND, GND) are connected at one point on PCB.

NJM2096

MEMO

[CAUTION]
The specifications on this databook are only given for information , without any guarantee as regards either mistakes or omissions. The application circuits in this databook are described only to show representative usages of the product and not intended for the guarantee or permission of any right including the industrial rights.