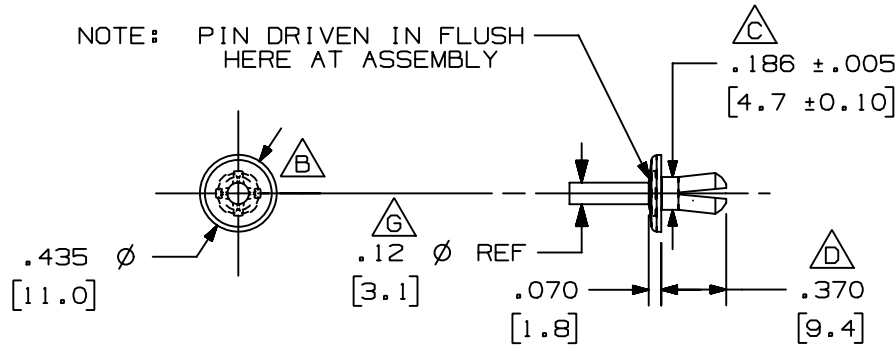


THIS COPY IS PROVIDED ON A RESTRICTED BASIS AND IS NOT TO BE USED IN ANY WAY DETRIMENTAL TO THE INTERESTS OF PANDUIT CORP.

NOTE: PIN DRIVEN IN FLUSH
HERE AT ASSEMBLY



E

PANDUIT P/N	WEIGHT
NR1 -	.11LB/ 100PCS. (50g/ 100PCS.)

NOTES:

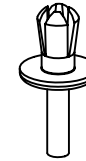
- SEE CURRENT CATALOG FOR ADDITIONAL PART SUFFIXES TO INDICATE COLOR AND OR PACKAGE QUANTITY.
- DIMENSIONS IN PARENTHESES ARE METRIC.

F A I

J

TOTAL THICKNESS PANEL & DUCT	HOLE SIZE + .005 [.10] - .000 [.00]	ANSI STANDARD STRAIGHT SHANK TWIST DRILL BIT SIZE
.156 - .187 [4.0 - 4.7]	.187 [4.7]	15
.187 - .218 [4.8 - 5.5]	.193 [4.9]	11
.219 - .250 [5.6 - 6.35]	.203 [5.2]	7
.251 - .281 [6.38 - 7.1]	.213 [5.4]	4

H



E

CAD FILENAME/LAYERS D36401BA_DC_NR1_RIVET_01C.prt

PANDUIT CORP. TINLEY PARK, ILLINOIS

PUSH RIVET
(NR1)

UNLESS OTHERWISE SPECIFIED,
DIMENSIONAL TOLERANCES ARE:
(.X) ± (.XXX) ± .020 (.5)
(.XX) ± ANGLES ±

UNLESS OTHERWISE SPECIFIED,
ALL DIMENSIONS ARE GIVEN
IN INCHES, THIRD ANGLE PROJECTION.

DRAWN BY
R²

MAT'L:

SCALE FULL

DATE
1-29-64

NYLON 6/6
NATURAL

DRAWING NO.

D-191

DWG
SIZE
A

CHK'D
CEF

REV	DATE	BY	CHK	DESCRIPTION	ECN	R	CUST	SUP
--	-----	---	---	J. ADDED DRILL BIT SIZE I. CHANGED COLUMN TITLE	-----	---	---	
9	11-23-05	JCST	JKG	H. CHANGED DIMENSIONS TO RANGES G. ADDED REFERENCE DIMENSION	D-191	JKG	JKG	
8	8-29-01	JCST	JKG	F. DUAL DIMENSIONED CHART.	D-191	JKG	JKG	
7	9-13-00	JHNU	HIW	E. REVISED AND REDRAWN	D-191	HIW	HIW	
6	4-15-84	DW/CEF	DW/CEF	D. REV'D DIM WAS .380 C. REV'D DIM. WAS .185 AND ADDED TOL.	D-191	CEF	CEF	
5	7-31-79	RJ/MP	RJ/MP	B. ADDED RING SLOT TO FACE OF HEAD, ECN 191-5	D-191	JSR	JSR	
4	3-18-76	REC	REC	A. ADDED PANEL & HOLE SIZE CHART.	D-191	JSR	JSR	
3	9-26-72	JRL	JRL	REDRAWN WITH FORMAT CHANGE	D-191	JSR	JSR	