

RECTIFIER ASSEMBLIES

Single Phase Bridges, 25 Amp,
Military Approved

JAN SPA25
JAN SPB25
JAN SPC25
JAN SPD25

FEATURES

- Qualified to MIL-S-19500/446
- Current Rating: to 25A
- PIV: from 100 to 600V
- Surge Ratings of 150A
- Only Fused-in-Glass Diodes Used
- Controlled Avalanche Characteristics
- Aluminum Heat Sink Case, Electrically Insulated

DESCRIPTION

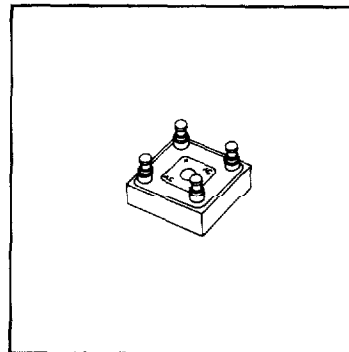
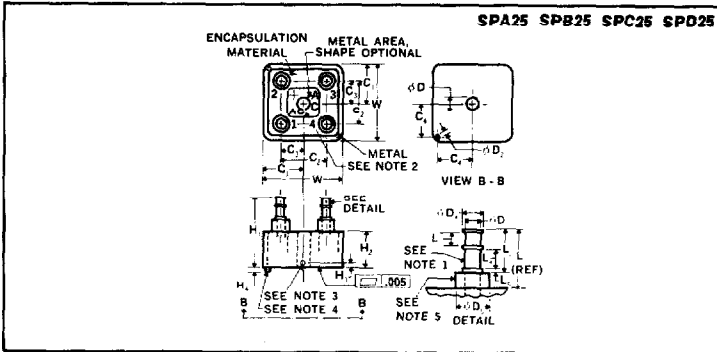
This series of military high-current single-phase bridges offer the utmost in reliability as required in military system designs. This series is assembled with diodes which have been subjected to 100% screening tests.

ABSOLUTE MAXIMUM RATINGS

Peak Inverse Voltage	100 to 600V
Maximum Average D.C. Output Current	
@ $T_c = 55^\circ\text{C}$	25A
@ $T_c = 100^\circ\text{C}$	15A
Non-Repetitive Sinusoidal Surge (8.3ms)	
@ $T_c = 55^\circ\text{C}$	150A
Operating and Storage Temperature Range, T_c	-65°C to $+150^\circ\text{C}$
Thermal Resistance Junction to Ambient	20°C/W
Junction to Case	2.5°C/W

Ltr	Dimensions			
	INCHES		MILLIMETERS	
	MIN.	MAX.	MIN.	MAX.
C ₁	.552	.572	14.02	14.53
C ₂	.624	.760	15.85	19.30
C ₃	.312	.380	7.92	9.65
C ₄	.495	.512	12.57	13.00
ϕD_1	.189	.195	4.80	4.95
ϕD_2	.057	.067	1.45	1.70
ϕD_3	.108	.118	2.74	3.00
ϕD_4	.141	.151	3.58	3.84
ϕD_5	.225	.235	5.72	5.97
H ₁	.669	1.060	17.53	26.92
H ₂	.300	.500	7.62	12.70
H ₃	.040	.060	1.02	1.52
H ₄	.042	.062	1.07	1.57
L ₁	.370	.560	9.40	14.22
L ₂	.307	.365	7.80	9.27
L ₃	.089	.099	2.26	2.49
L ₄	.132	.142	3.35	3.61
L ₅	.026	.036	.66	.92
W	1.104	1.144	28.04	29.06

MECHANICAL SPECIFICATIONS



NOTES:

1. Terminals shall be hot tin dipped or silver plated.
2. Polarity shall be marked on terminal side of device.
3. Point at which T_c is read (must be in metal part of case).
4. Locating pin shall be adjacent to positive terminal.
5. Insulating sleeve shall be alumina (Al_2O_3) or equivalent.

Microsemi Corp.
Watertown
The diode experts

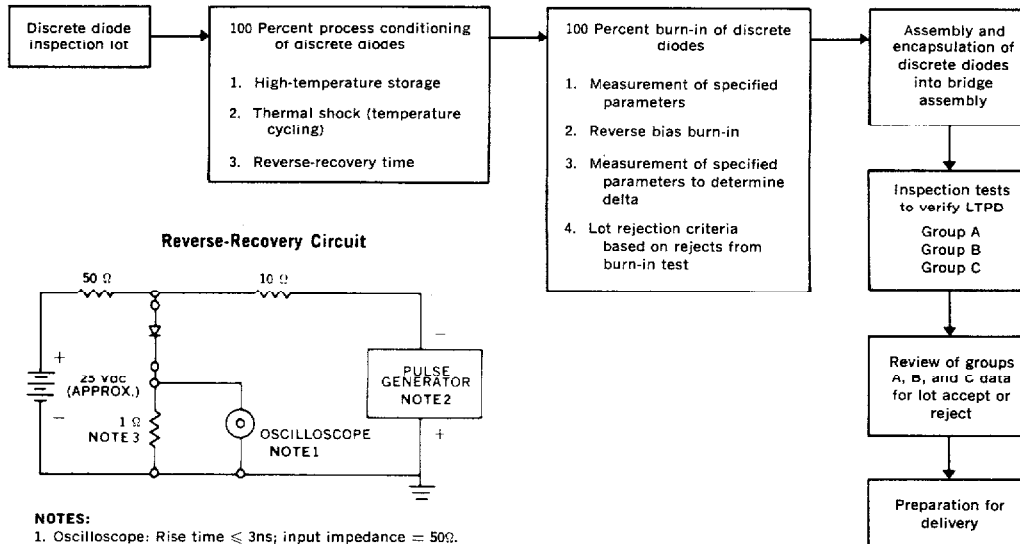
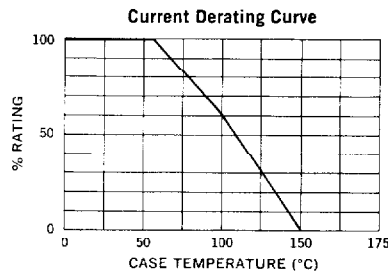
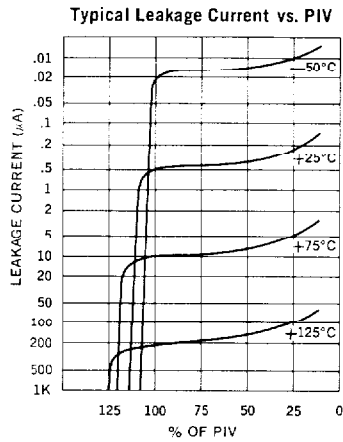
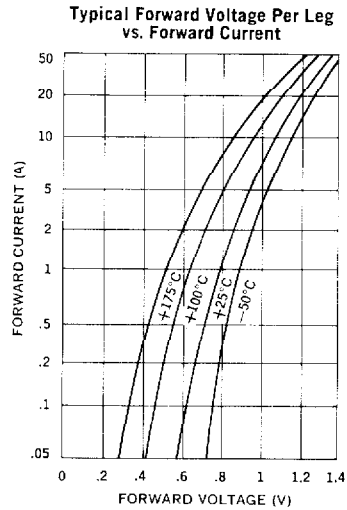
Electrical Specifications (at 25°C unless noted)

Type	PIV Per Leg	Peak Forward Voltage Drop*		Maximum Reverse Recovery Time†	Maximum Leakage Current Per Leg @ PIV	
		Minimum	Maximum		T _C = 25°C	T _C = 100°C
	Volts			μS	μA	μA
JAN SPA25 JAN SPB25 JAN SPC25 JAN SPD25	100 200 400 600	0.9V	1.4V	2	2	150
		@ 39A(pk)				

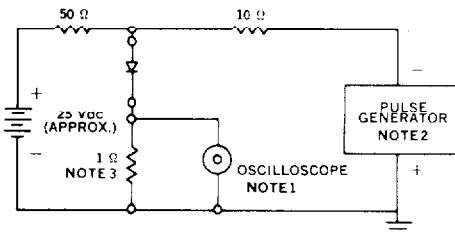
3

*Peak forward voltage drop is measured at a pulse width of 8.3ms.

†Measured in a reverse recovery circuit switching from 0.5A forward to 1.0A reverse current recovery to 0.5A.



Reverse-Recovery Circuit



- NOTES:**
- Oscilloscope: Rise time ≤ 3ns; input impedance = 50Ω.
 - Pulse Generator: Rise time ≤ 8ns; source impedance 10Ω.
 - Current viewing resistor, non-inductive, coaxial recommended.

Copyright © Each Manufacturing Company.

All Datasheets cannot be modified without permission.

This datasheet has been download from :

www.AllDataSheet.com

100% Free DataSheet Search Site.

Free Download.

No Register.

Fast Search System.

www.AllDataSheet.com