

THYRISTOR MODULE

PBH308AC

30A / 800V

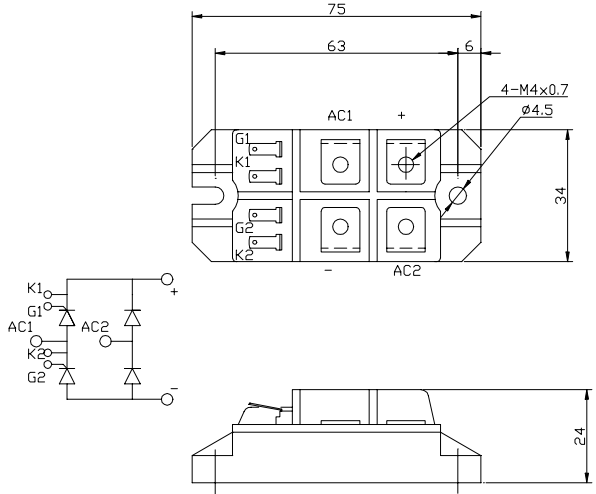
OUTLINE DRAWING

FEATURES

- * Isolated Base
- * Thyristors and Diodes
H-Bridge Circuit
- * High Surge Capability
- * UL Recognized, File No. E187184

TYPICAL APPLICATIONS

- * Rectified For General Use



Maximum Ratings

Approx Net Weight:70g

Parameter	Symbol	Grade	Unit
		PBH308AC	
Repetitive Peak Off-State Voltage	V_{DRM}	800	V
Non Repetitive Peak Off-State Voltage	V_{DSM}	960	
Repetitive Peak Reverse Voltage	V_{RRM}	800	V
Non Repetitive Peak Reverse Voltage	V_{RSM}	960	

Parameter		Conditions	Max Rated Value	Unit		
Average Rectified Output Current	$I_{O(AV)}$	50Hz Half Sine Wave condition $T_c=94^{\circ}C$	30	A		
Surge On-State Current	I_{TSM}	50 Hz Half Sine Wave, 1Pulse, Non-Repetitive	600	A		
I Squared t	I^2t	2msec to 10msec	1800	A^2s		
Critical Rate of Turned-On Current	di/dt	$V_D=2/3V_{DRM}$, $I_{TM}=2 \cdot I_O$, $T_j=125^{\circ}C$ $I_G=200mA$, $di_G/dt=0.2A/\mu s$	100	$A/\mu s$		
Peak Gate Power	P_{GM}		5	W		
Average Gate Power	$P_{G(AV)}$		1	W		
Peak Gate Current	I_{GM}		2	A		
Peak Gate Voltage	V_{GM}		10	V		
Peak Gate Reverse Voltage	V_{RGM}		5	V		
Operating Junction Temperature Range	T_{jw}		-40 to +125	$^{\circ}C$		
Storage Temperature Range	T_{stg}		-40 to +125	$^{\circ}C$		
Isolation Voltage	Viso	Base Plate to Terminals, AC1min	2500	V		
Mounting torque	Case mounting	Ftor	Greased	M4 Screw	0.9 to 1.6	N·m
	Terminals		-	M4 Screw	1.3 to 1.9	
Gate Terminals Treatment Force		Ftor	Insertion/Pulling out	45/32	N	

Value per 1 Arm

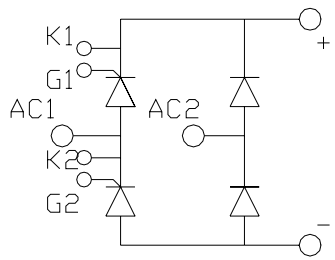
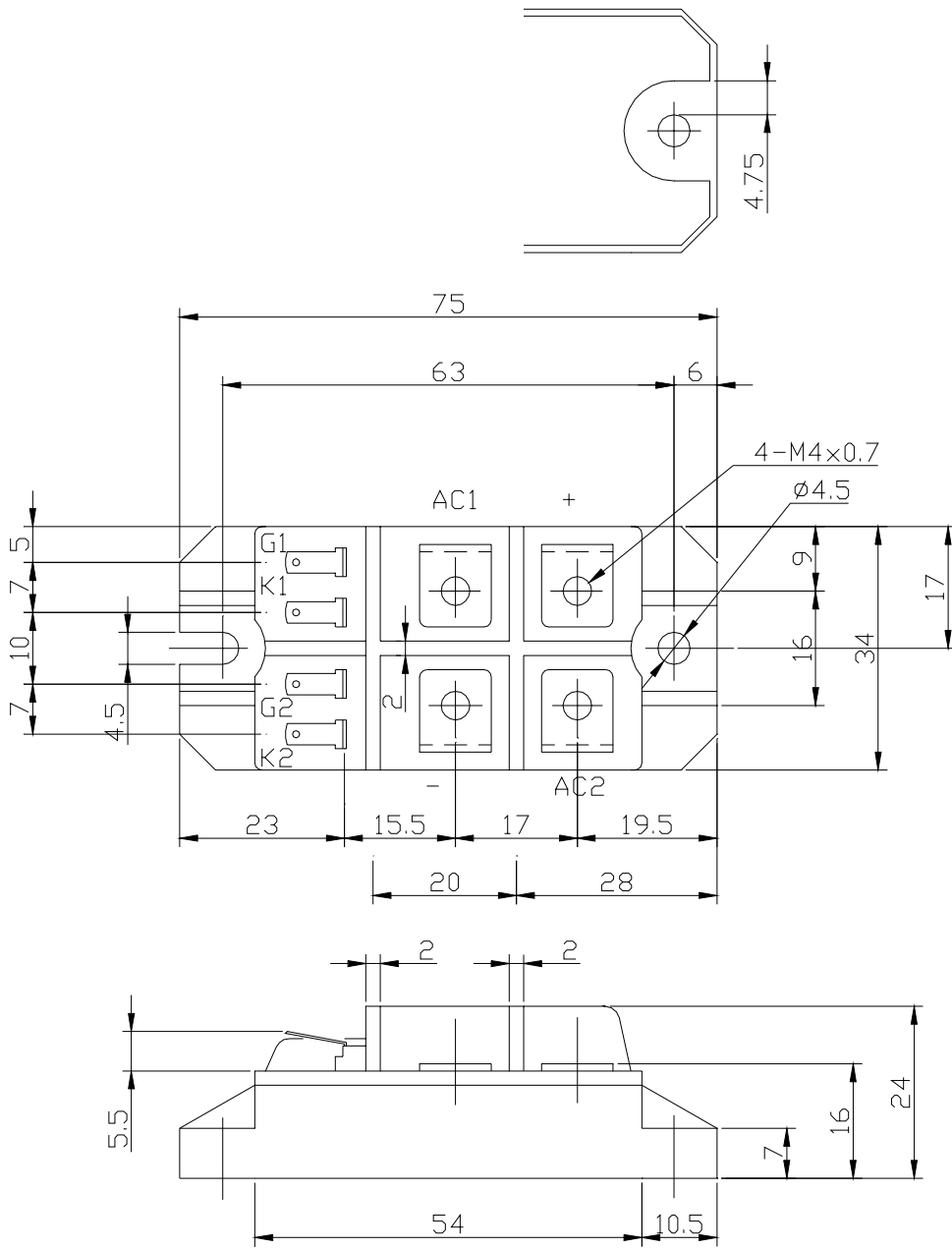
Electrical • Thermal Characteristics

Characteristics	Symbol	Test Conditions	Maximum Value.			Unit
			Min.	Typ.	Max.	
Peak Off-State Current	I_{DM}	$V_{DM} = V_{DRM}, T_j = 125^\circ\text{C}$			10	mA
Peak Reverse Current	I_{RM}	$V_{RM} = V_{RRM}, T_j = 125^\circ\text{C}$			10	mA
Peak Forward Voltage	V_{TM}	$I_{TM} = 90\text{A}, T_j = 25^\circ\text{C}$			1.45	V
Gate Current to Trigger	I_{GT}	$V_D = 6\text{V}, I_T = 1\text{A}$	$T_j = -40^\circ\text{C}$		200	mA
			$T_j = 25^\circ\text{C}$		100	
			$T_j = 125^\circ\text{C}$		50	
Gate Voltage to Trigger	V_{GT}	$V_D = 6\text{V}, I_T = 1\text{A}$	$T_j = -40^\circ\text{C}$		4	V
			$T_j = 25^\circ\text{C}$		2.5	
			$T_j = 125^\circ\text{C}$		2	
Gate Non-Trigger Voltage	V_{GD}	$V_D = 2/3V_{DRM}, T_j = 125^\circ\text{C}$	0.25			V
Critical Rate of Rise of Off-State Voltage	dv/dt	$V_D = 2/3V_{DRM}, T_j = 125^\circ\text{C}$	500			V/ μs
Turn-Off Time	tq	$I_{TM} = I_O, V_D = 2/3V_{DRM}$ $dv/dt = 20\text{V}/\mu\text{s}, V_R = 100\text{V}$ $-di/dt = 20\text{A}/\mu\text{s}, T_j = 125^\circ\text{C}$		100		μs
Turn-On Time	tgt	$V_D = 2/3V_{DRM}, T_j = 125^\circ\text{C}$ $I_G = 200\text{mA}, di_G/dt = 0.2\text{A}/\mu\text{s}$		6		μs
Delay Time	td			2		μs
Rise Time	tr			4		μs
Latching Current	I_L	$T_j = 25^\circ\text{C}$		100		mA
Holding Current	I_H	$T_j = 25^\circ\text{C}$		50		
Thermal Resistance *1	Rth(j-c)	Junction to Case			0.44	$^\circ\text{C}/\text{W}$
	Rth(c-f)	Base Plate to Heat Sink with Thermal Compound			0.1	

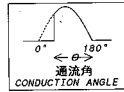
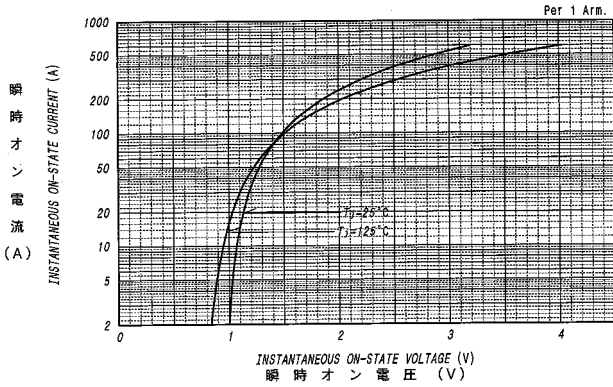
Value Per 1Arm

*1:Value Per Module

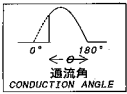
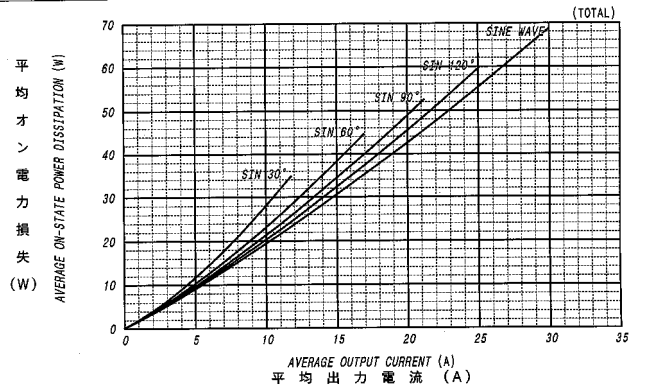
PBH308AC OUTLINE DRAWING (Dimensions in mm)



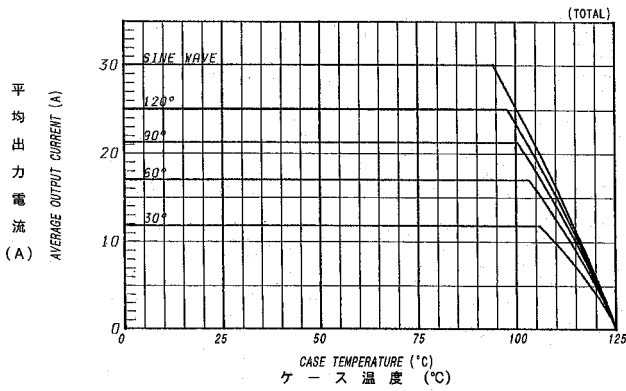
オン電圧特性
ON-STATE CURRENT VS. VOLTAGE



平均オン電力損失特性
AVERAGE ON-STATE POWER DISSIPATION

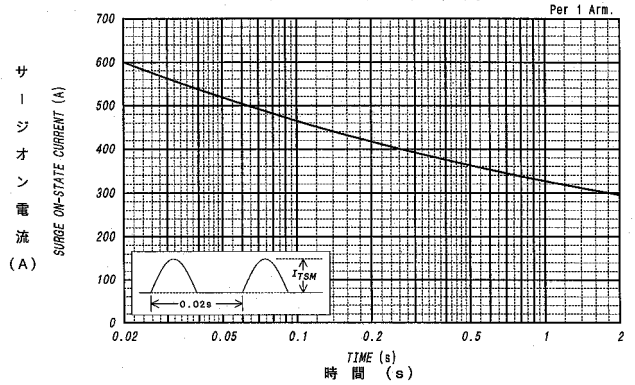


平均出力電流 - ケース温度定格
AVERAGE OUTPUT CURRENT VS. CASE TEMPERATURE

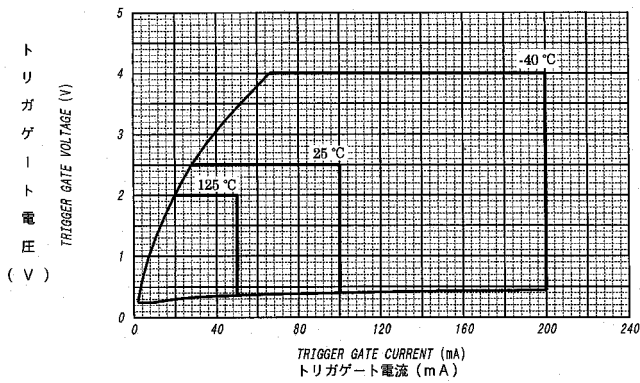


サージオン電流定格
SURGE CURRENT RATINGS

f=50Hz, Half Sine Wave, Non-Repetitive, Tj=125°C



ゲート特性
GATE CHARACTERISTICS



ゲート定格
GATE RATINGS

