

DIODE MODULE 200A/800V

PC2008 PD2008

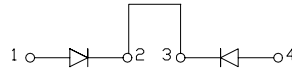
FEATURES

- * Isolated Base
- * Dual Diodes Cathode Common and Cascaded Circuit
- * High Surge Capability
- * UL Recognized, File No. E187184

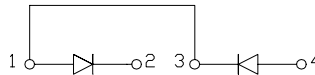
TYPICAL APPLICATIONS

- * Rectified For General Use

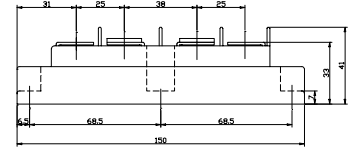
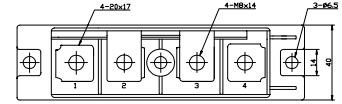
PC



PD



OUTLINE DRAWING



Maximum Ratings

Approx Net Weight:480g

| Parameter | Symbol | Type / Grade | Unit |
|--|-----------|-----------------|------|
| | | PC2008 / PD2008 | |
| Repetitive Peak Reverse Voltage *1 | V_{RRM} | 800 | V |
| Non Repetitive Peak Reverse Voltage *1 | V_{RSM} | 900 | |

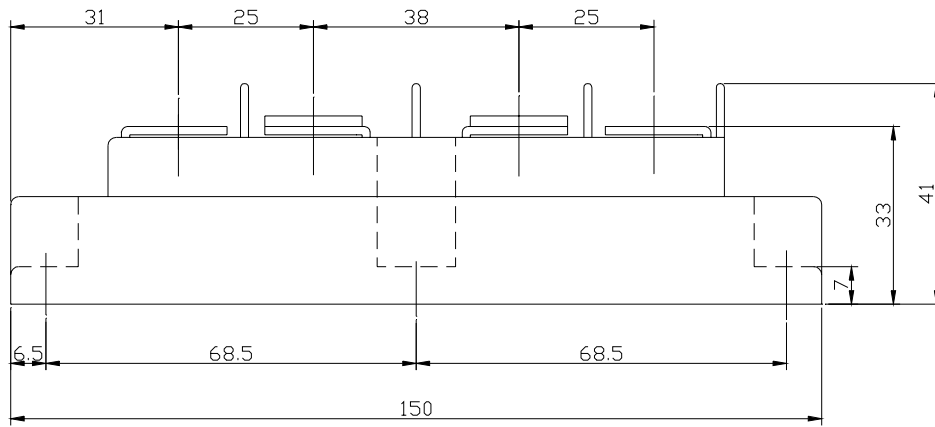
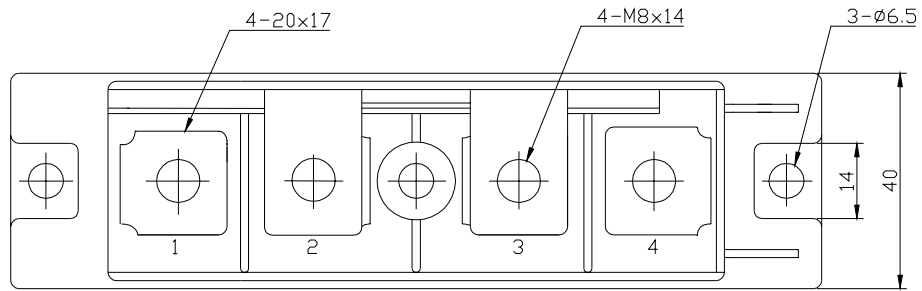
| Parameter | Symbol | Conditions | Max Rated Value | Unit | |
|--------------------------------------|---------------|---|-----------------|-------------|-----|
| Average Rectified Output Current *1 | $I_{O(AV)}$ | 50 Hz Half Sine Wave condition $T_c=94^{\circ}C$ | 200 | A | |
| RMS Forward Current *1 | $I_{F(RMS)}$ | | 314 | A | |
| Surge Forward Current *1 | I_{FSM} | 50 Hz Half Sine Wave, 1cycle, Non-Repetitive | 4000 | A | |
| I Squared t *1 | I^2t | 2msec to 10msec | 80000 | A^2s | |
| Operating Junction Temperature Range | T_{jw} | | -40 to +150 | $^{\circ}C$ | |
| Storage Temperature Range | T_{stg} | | -40 to +125 | $^{\circ}C$ | |
| Isolation Voltage | V_{iso} | Base Plate to Terminals, AC1min | 2000 | V | |
| Mounting Torque | Case Mounting | F_{tor} | M6 Screw | 2.5 to 3.5 | N.m |
| | Terminals | | M8 Screw | 9.0 to 10.0 | |

Electrical • Thermal Characteristics

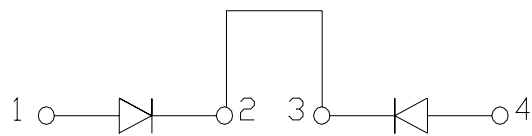
| Characteristics | Symbol | Test Conditions | Max. | Unit |
|-------------------------|---------------|--------------------------------------|------|---------------|
| Peak Reverse Current *1 | I_{RM} | $V_{RM}= V_{RRM}, T_j= 150^{\circ}C$ | 30 | mA |
| Peak Forward Voltage *1 | V_{FM} | $I_{FM}= 600A, T_j=25^{\circ}C$ | 1.24 | V |
| Thermal Resistance *1 | $R_{th(j-c)}$ | Junction to Case | 0.23 | $^{\circ}C/W$ |
| | $R_{th(c-f)}$ | Case to Fin, Greased | 0.1 | |

*1: Value Per 1Arm

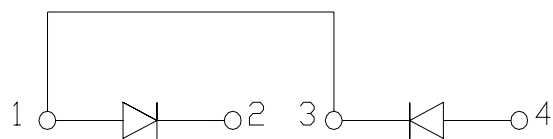
PC/PD2008 OUTLINE DRAWING (Dimensions in mm)



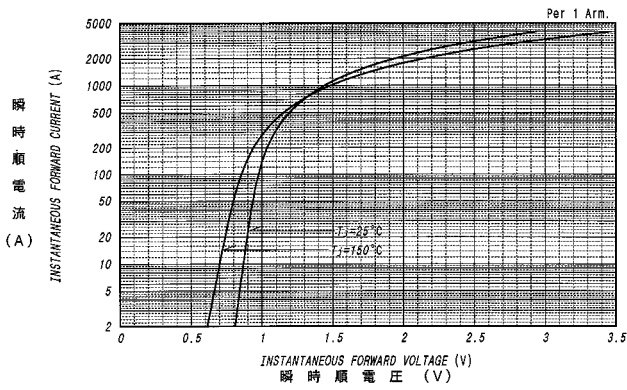
PC



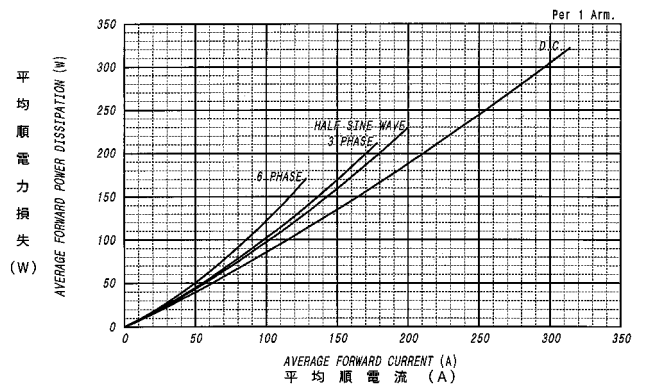
PD



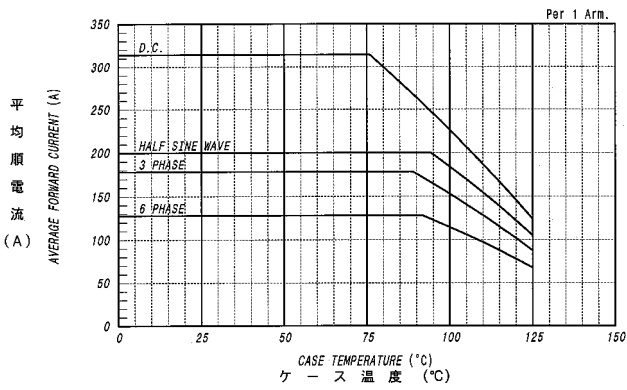
順電圧特性
FORWARD CURRENT VS. VOLTAGE



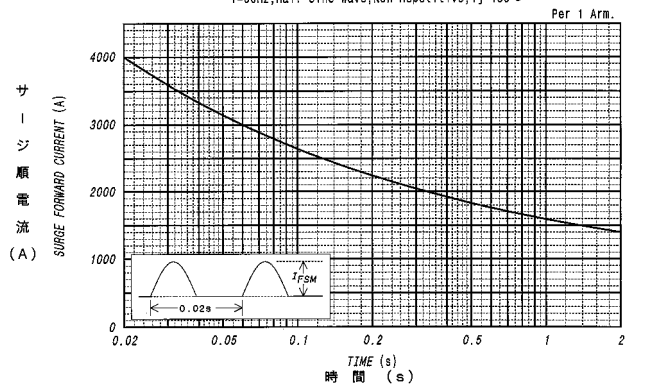
平均順電力損失特性
AVERAGE FORWARD POWER DISSIPATION



平均順電流 - ケース温度定格
AVERAGE FORWARD CURRENT VS. CASE TEMPERATURE



サージ順電流定格
SURGE CURRENT RATINGS



過渡熱抵抗特性
MAXIMUM TRANSIENT THERMAL IMPEDANCE
Junction to Case

