

**DIODE MODULE 60A/1200 to 1600V**

PC6012 PC6016

PD6012 PD6016

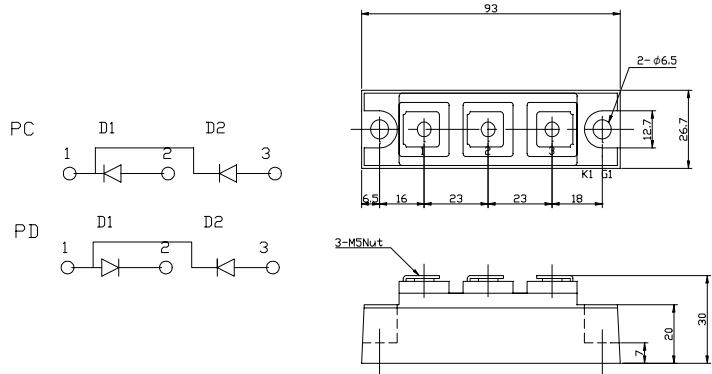
**FEATURES**

- \* Isolated Base
- \* Dual Diodes Cathode Common and Cascaded Circuit
- \* High Surge Capability
- \* UL Recognized, File No. E187184

**TYPICAL APPLICATIONS**

- \* Rectified For General Use

**OUTLINE DRAWING**



**Maximum Ratings**

Approx Net Weight:155g

Parameter	Symbol	Type / Grade		Unit
		PC6012 / PD6012	PC6016 / PD6016	
Repetitive Peak Reverse Voltage *1	V <sub>RRM</sub>	1200	1600	V
Non Repetitive Peak Reverse Voltage *1	V <sub>RSM</sub>	1300	1700	

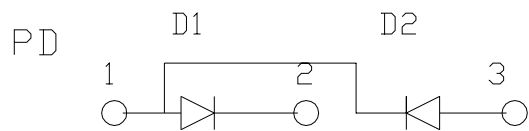
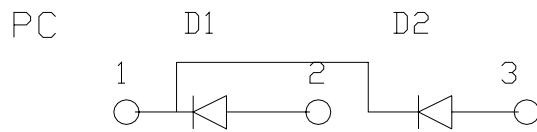
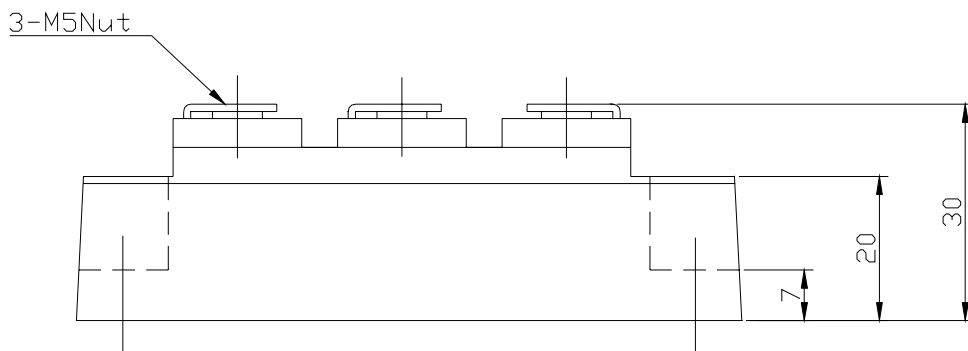
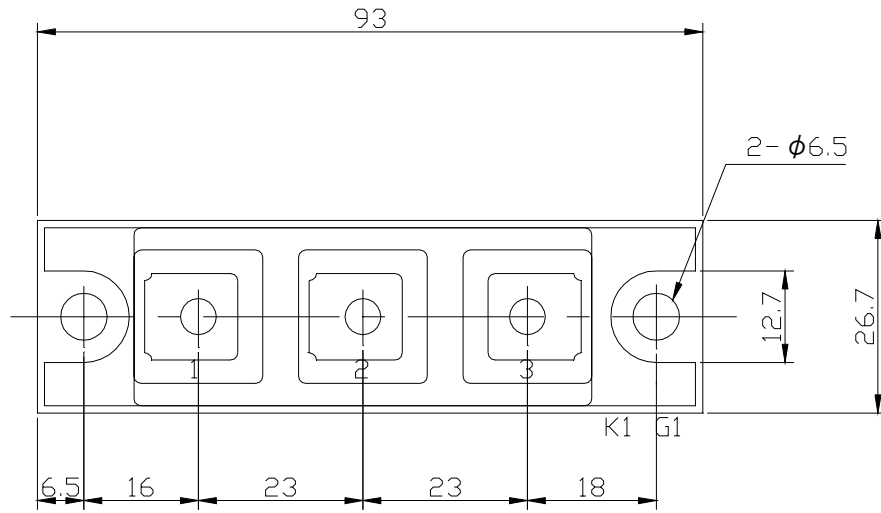
Parameter	Symbol	Conditions	Max Rated Value	Unit
Average Rectified Output Current *1	I <sub>O(AV)</sub>	50Hz Half Sine Wave condition T <sub>c</sub> =87°C	60	A
RMS Forward Current *1	I <sub>F(RMS)</sub>		94	A
Surge Forward Current *1	I <sub>FSM</sub>	50 Hz Half Sine Wave, 1Pulse Non-repetitive	1200	A
I Squared t *1	I <sup>2</sup> t	2msec to 10msec	7200	A <sup>2</sup> s
Operating JunctionTemperature Range	T <sub>jw</sub>		-40 to +125	°C
Storage Temperature Range	T <sub>stg</sub>		-40 to +125	°C
Isolation Voltage	V <sub>iso</sub>	Base Plate to Terminals, AC1min	2500	V
Mounting torque	Case mounting	M6 Screw	2.4 to 3.5	N.m
	Terminals	M5 Screw	2.4 to 2.8	

**Electrical • Thermal Characteristics**

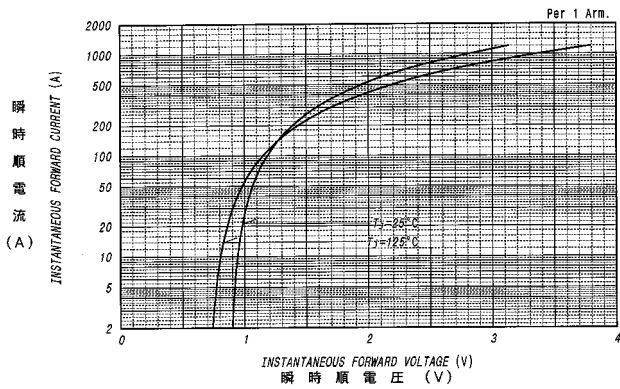
Characteristics	Symbol	Test Conditions	Max.	Unit
Peak Reverse Current *1	I <sub>RM</sub>	V <sub>RM</sub> = V <sub>RRM</sub> , T <sub>j</sub> = 125°C	15	mA
Peak Forward Voltage *1	V <sub>FM</sub>	I <sub>FM</sub> = 180A, T <sub>j</sub> =25°C	1.35	V
Thermal Resistance *1	R <sub>th(j-c)</sub>	Junction to Case	0.5	°C/W
	R <sub>th(c-f)</sub>	Base Plate to Heat Sink with Thermal Compound	0.2	

\*1: Value Per 1Arm

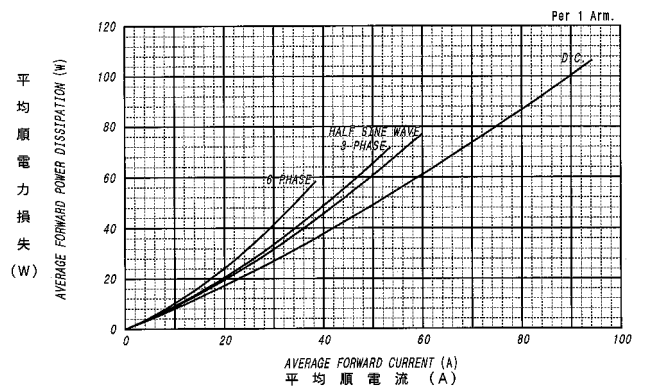
PC/PD6012 OUTLINE DRAWING (Dimensions in mm)



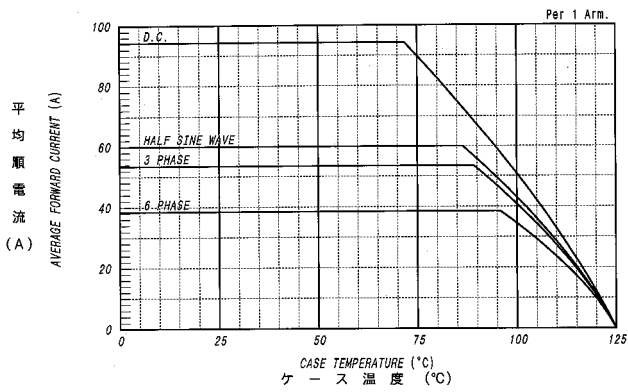
順電圧特性  
FORWARD CURRENT VS. VOLTAGE



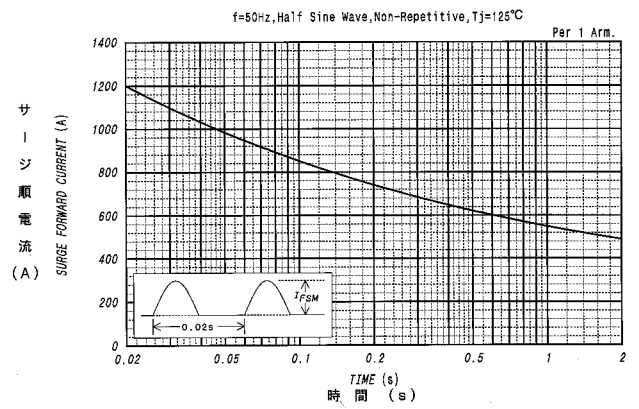
平均順電力損失特性  
AVERAGE FORWARD POWER DISSIPATION



平均順電流 - ケース温度定格  
AVERAGE FORWARD CURRENT VS. CASE TEMPERATURE



サージ順電流定格  
SURGE CURRENT RATINGS



過渡熱抵抗特性  
MAXIMUM TRANSIENT THERMAL IMPEDANCE  
Junction to Case

