

SBD MODULE 60A/40V

PE60Q04N

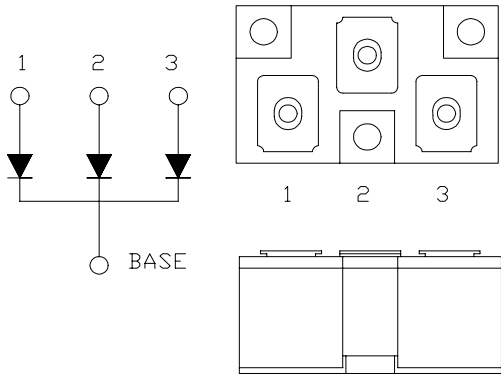
OUTLINE DRAWING

FEATURES

- * Three-Arms, Cathode Common to Base Plate
- * Low Forward Voltage Drop
- * Low Power Loss, High Efficiency
- * High Surge Capability
- * UL Recognized, File No. E187184

TYPICAL APPLICATIONS

- * High Frequency Rectification



Maximum Ratings

Approx Net Weight:65g

Voltage Rating	Symbol	PE60Q04N		Unit
Repetitive Peak Reverse Voltage	V _{RRM}	40		V
Repetitive Peak Surge Reverse Voltage	V _{RRSM}	45 (Pulse Width ≤ 1 μsec, Duty ≤ 1/50)		V
Electrical Rating		Condition	Rating	
Average Rectified Output Current	I _O	50Hz Half Sine Wave per Arm, T _c =87°C	60	A
RMS Forward Current	I _{F(RMS)}	Per Arm	94	A
Surge Forward Current	I _{FSM}	50 Hz Half Sine Wave, 1cycle Non-repetitive, per Arm	800	A
Operating JunctionTemperature Range	T _{jw}		-40 to +125	°C
Storage Temperature Range	T _{stg}		-40 to +125	°C
Mounting torque	F _{tor}	Case mounting(recommended)	1.45	N.m
		Terminal Screw(recommended)	1.45	

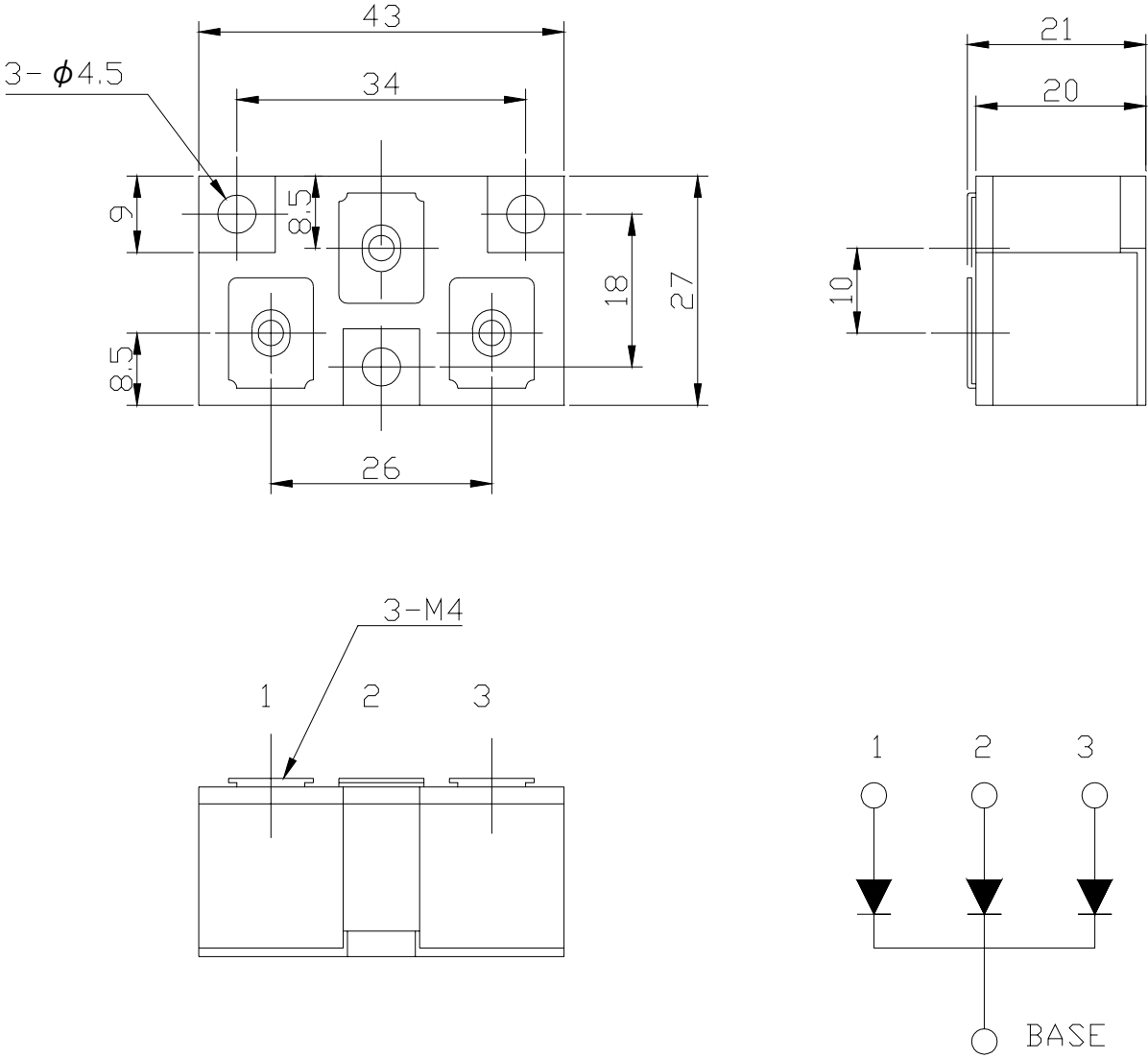
Electrical • Thermal Characteristics

Characteristics	Symbol	Test Conditions	Max.	Unit
Peak Forward Voltage	V _{FM}	I _{FM} = 60A, T _j =25°C, per Arm	0.58	V
Peak Reverse Current	I _{RM}	V _{RM} = V _{RRM} , T _j = 25°C, per Arm	40	mA
Thermal Resistance	R _{th(j-c)}	Junction to Case, per Arm	0.74	°C/W
	R _{th(c-f)}	Base Plate to Heat Sink with Thermal Compound	0.12	

We recommend the use of the electrical conductive grease.

In case of parallel use, consider in balance of the current of each arms.

PE60Q04N OUTLINE DRAWING (Dimensions in mm)



Copyright © Each Manufacturing Company.

All Datasheets cannot be modified without permission.

This datasheet has been download from :

www.AllDataSheet.com

100% Free DataSheet Search Site.

Free Download.

No Register.

Fast Search System.

www.AllDataSheet.com