

Technical Information of Pyro-electric Infra-red Sensors

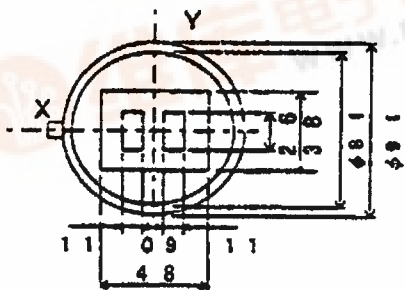
(红外线感应器)

TYPE : PIS-209S
SPEC No. : 1PI209S-KC100
 Equivalent Spec. : 1PI209S-KC000

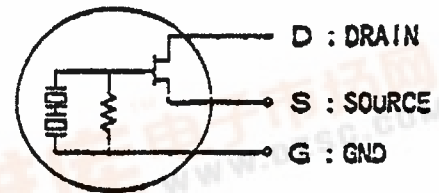
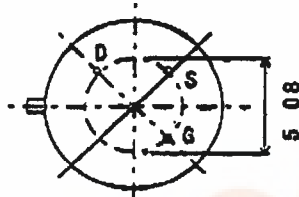
Characteristics 特征		209S	Unit	Test Conditions (20±15°C)
Detector Type		Dual element	-	-
Housing		T0-5	-	-
Responsivity (灵敏度)	min. (最小)	1.19	Vp-p	Chopper, 1Hz Black body, 165°C 40dB Amp Supply Voltage, 5VDC Load Resistance, 47kΩ (负载电阻)
		(130)	(%)	
Noise Voltage (噪声电压)	max (最大)	300	mVp-p	73dB Amp. Supply Voltage, 5VDC Load Resistance, 47kΩ
Source voltage (光源电压)	min. (最小)	0.3	V	40dB Amp.
	typ. (一般)	0.7		Supply Voltage, 5VDC
	max (最大)	1.5		Load Resistance, 47kΩ
Storage temperature (储存温度)		-20 to +70	°C	-
Operating temperature (工作温度)		-10 to +50	°C	-
Operating voltage (工作电压)	min. (最小)	3	V	DC
	typ. (一般)	5		
	max. (最大)	15		

notes : Load Resistance is connected between Source pin and GND.

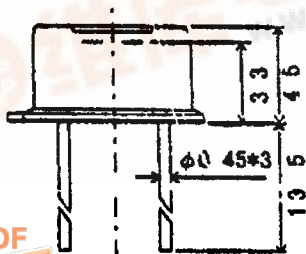
TOP VIEW (上视图)



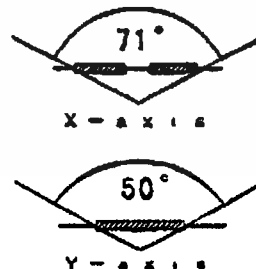
BOTTOM VIEW (下视图) CIRCUIT DIAGRAM (电路图)



SIDE VIEW (侧视图)



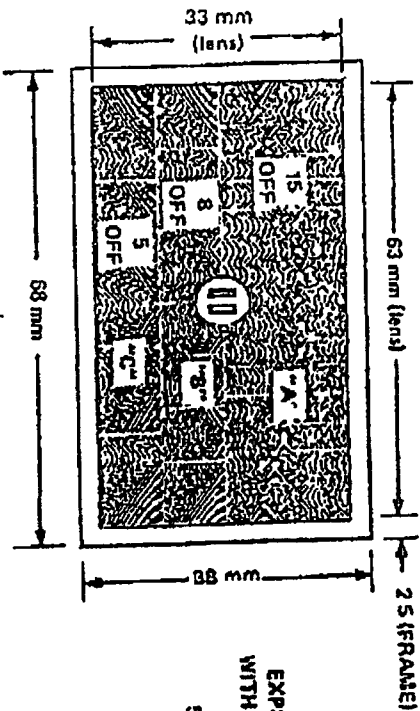
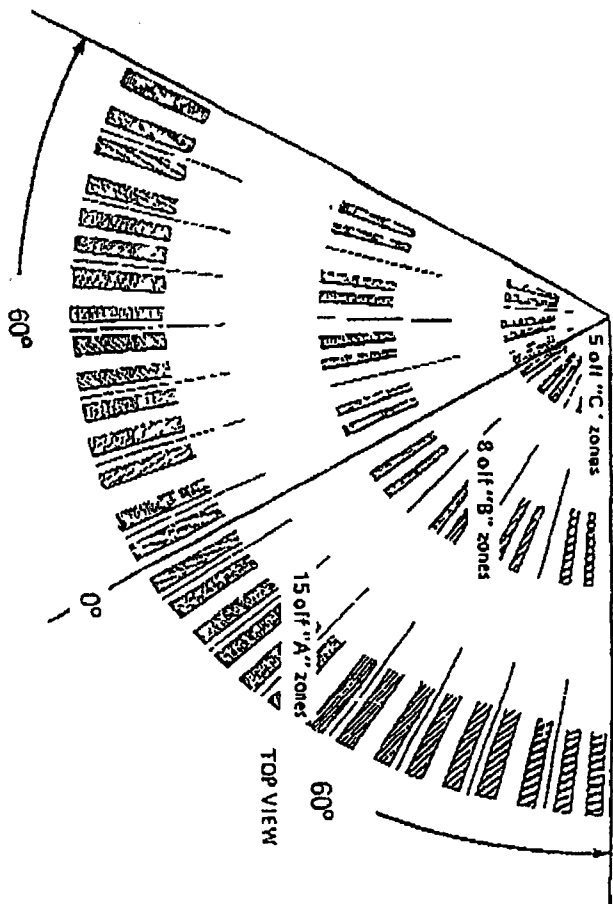
FIELD OF VIEW



FRESNEL LENS

MULTI-SEGMENT (28)
EXTRA-WIDE ANGLE LENS
IN 3 PLANES.

WILL GIVE 56 DETECTION ZONES OVER 120° WHEN USED WITH A DUAL ELEMENT
PYROSENSOR HAVING MINIMUM 120° FIELD OF VIEW.



EXPECTED SIGNAL FROM TAP
WITH TEMPERATURE DIFFEREN
OF 5°C AT 10 METRES IS
500 NANOWATTS PK TO PK

SIDE VIEW

