

PQ3DF53

3.3V Output, High Output Current (5A) Type Low Power-loss Voltage Regulator

■ Features

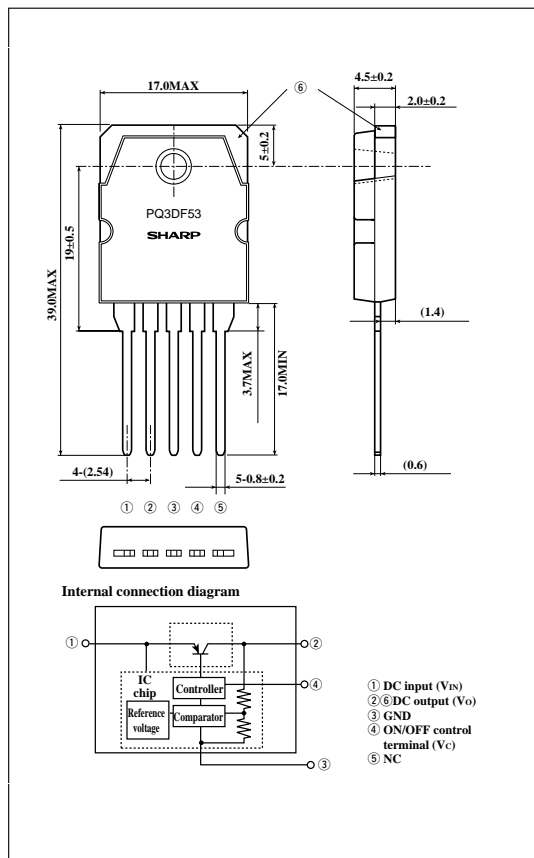
- TO-3P package
- Low power-loss (Dropout voltage : MAX. 0.5V at Io=5A)
- 3.3V output
- High output current (5A)
- High-precision output voltage type (Output voltage precision : ±2.5%)
- Built-in ON/OFF control function
- Built-in overcurrent protection, overheat protection function

■ Applications

- Power supplies for various electronic equipment such as personal computers

■ Outline Dimensions

(Unit : mm)



■ Absolute Maximum Ratings

(T_a=25°C)

Parameter	Symbol	Rating	Unit
*1 Input voltage	V _{IN}	10	V
*1 ON/OFF control terminal voltage	V _C	10	V
Output current	I _O	5.0	A
Power dissipation (No heat sink)	P _{D1}	2.2	W
Power dissipation (With infinite heat sink)	P _{D2}	60	W
*2 Junction temperature	T _J	150	°C
Operating temperature	T _{opr}	-20 to + 80	°C
Storage temperature	T _{stg}	-40 to +150	°C
Soldering temperature	T _{sol}	260 (For 10s)	°C

*1 All are open except GND and applicable terminals.

*2 Overheat protection may operate at 125=<T_J<=150°C.

· Please refer to the chapter " Handling Precautions ".

■ Electrical Characteristics

(Unless otherwise specified, conditions shall be $V_{IN}=5V$, $I_o=2.5A$ $T_a=25^{\circ}C$)

Parameter	Symbol	Conditions	MIN.	TYP.	MAX.	Unit
Output voltage	V_o	-	3.218	3.3	3.382	V
Load regulation	R_{egL}	$I_o=5mA$ to $5.0A$	-	0.5	2.0	%
Line regulation	R_{egI}	$V_{IN}=4$ to $10V$	-	0.5	2.5	%
Temperature coefficient of output voltage	T_{cV_o}	$T_j=0$ to $125^{\circ}C$	-	± 0.02	-	$\%/^{\circ}C$
Ripple rejection	RR	-	45	55	-	dB
Dropout voltage	V_{i-o}	^{*3} , $I_o=5.0A$	-	-	0.5	V
^{*4} ON-state voltage for control	$V_{C(ON)}$	-	2.0	-	-	V
ON-state current for control	$I_{C(ON)}$	$V_C=2.7V$	-	-	20	μA
OFF-state voltage for control	$V_{C(OFF)}$	-	-	-	0.8	V
OFF-state current for control	$I_{C(OFF)}$	$V_C=0.4V$	-	-	-0.4	mA
Quiescent current	I_q	$I_o=0A$	-	-	17	mA

^{*3} Input voltage shall be the value when output voltage is 95% in comparison with the initial value.

^{*4} In case of opening control terminal ④, output voltage turns on.

Fig.1 Test Circuit

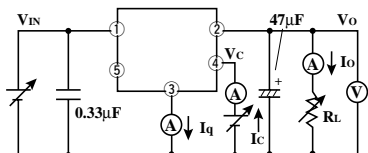


Fig.2 Test Circuit for Ripple Rejection

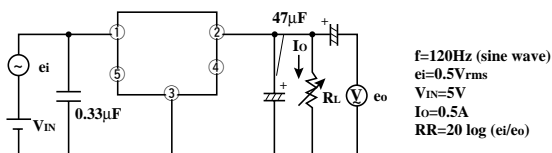
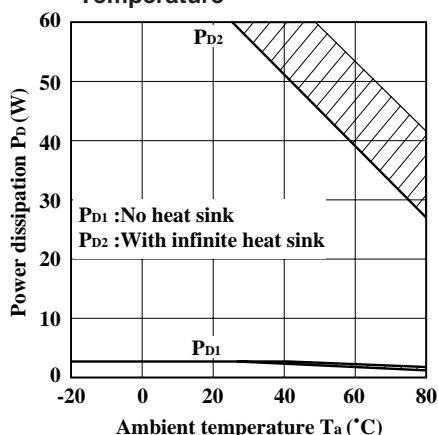


Fig.3 Power Dissipation vs. Ambient Temperature



Note) Oblique line portion: Overheat protection may operate in this area.

Fig.4 Overcurrent Protection Characteristics (Typical Value)

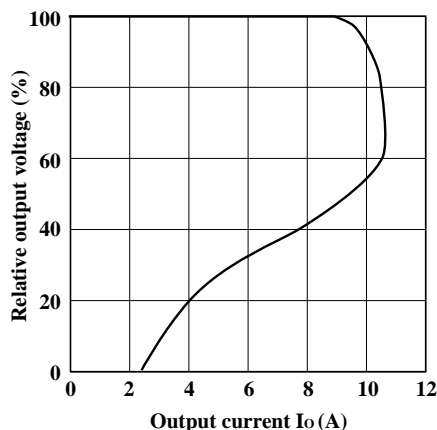


Fig.5 Output Voltage Deviation vs. Junction Temperature

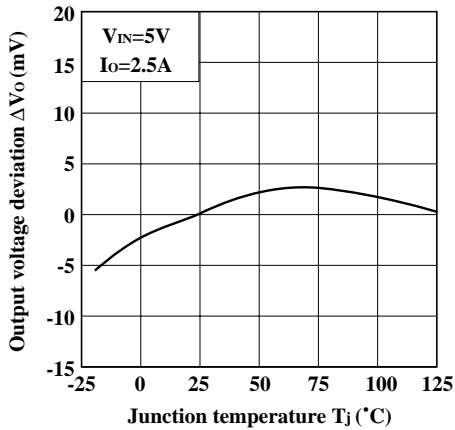


Fig.6 Output Voltage vs. Input Voltage

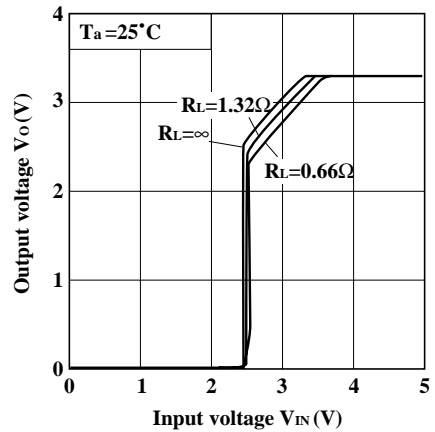


Fig.7 Circuit Operating Current vs. Input Voltage

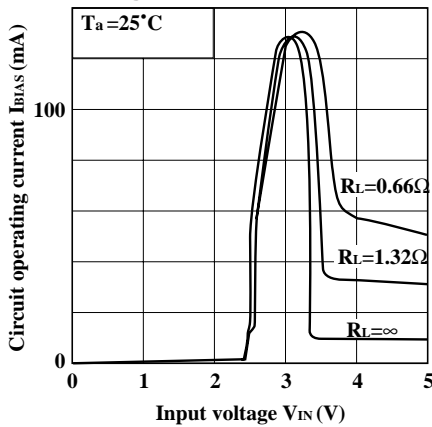


Fig.8 Dropout Voltage vs. Junction Temperature

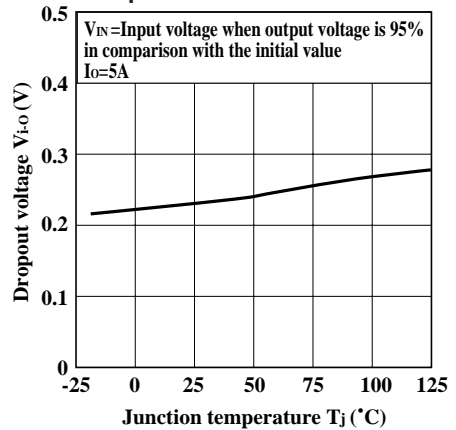


Fig.9 Quiescent Current vs. Junction Temperature

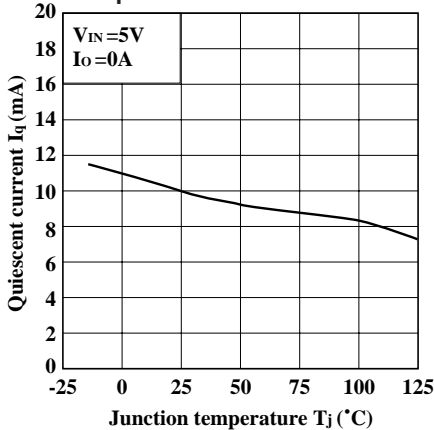


Fig.10 Ripple Rejection vs. Input Ripple Frequency

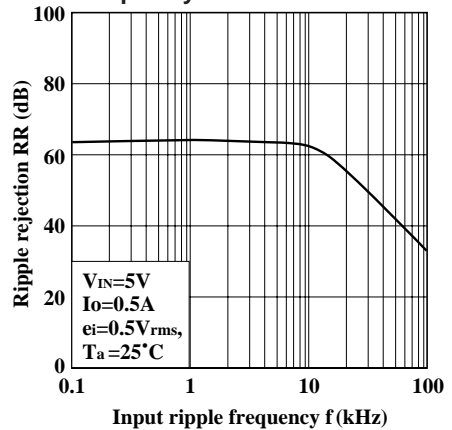
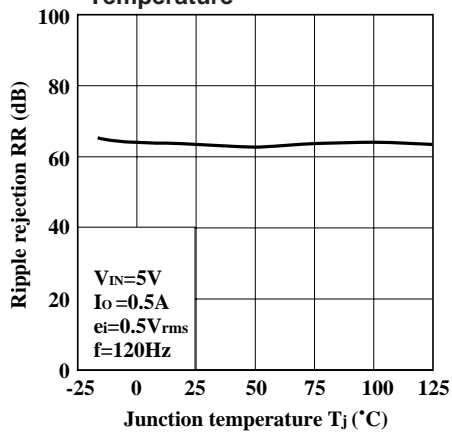


Fig.10 Ripple Rejection vs. Junction Temperature



■ Typical Applications

