

HAMAMATSU

PHOTOMULTIPLIER TUBE R5984

New Electro-Optical Design

Wide Effective Area, High Sensitivity Multialkali Photocathode
185 nm to 900 nm, 28 mm (1-1/8 Inch) Diameter, 9-stage, Side-on Type

FEATURES

- New Electro-Optical Design Structure
- Wide Effective Area 10 mm × 24 mm
- High Cathode Sensitivity (Luminous) 300 $\mu\text{A/lm}$
- High Anode Sensitivity (Luminous) 3000 A/lm
- Basing Diagram is same as the R928

APPLICATIONS

- Spectroscopy
- Biomedical
- Environmental Monitoring

SPECIFICATIONS

GENERAL

Parameter	Description/Value	Unit
Spectral Response	185 to 900	nm
Wavelength of Maximum Response	400	nm
Photocathode Material	Multialkali	—
Minimum Effective Area	10 × 24	mm
Window Material	UV glass	—
Dynode Structure	Circular Cage	—
Number of Stages	9	—
Direct Interelectrode Capacitances		
Anode to Last Dynode	Approx. 4	pF
Anode to All Other Electrodes	Approx. 6	pF
Base	11-pin base	—
Suitable Socket	E678-11A (Sold Separately)	—
Suitable D-Type Socket Assembly	E717-63 (Sold Separately)	—
Weight	Approx. 45	g
Operating Ambient Temperature	-30 to +50	°C
Storage Temperature	-30 to +50	°C

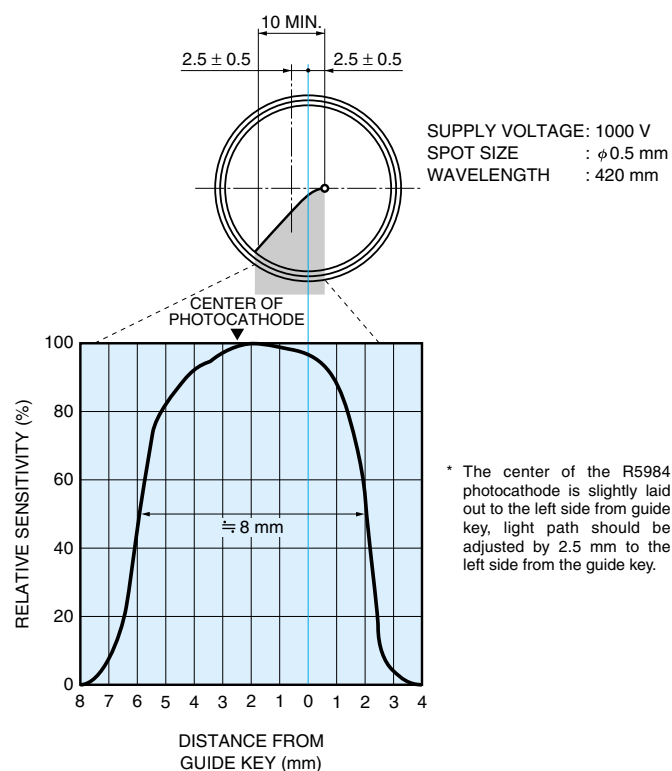
MAXIMUM RATINGS (Absolute Maximum Values)

Parameter	Value	Unit
Supply Voltage		
Between Anode and Cathode	1250	V
Between Anode and Last Dynode	250	V
Average Anode Current ^(A)	0.1	mA

NOTE (A): Averaged over any interval of 30 seconds maximum.



Figure 1: Typical Anode Uniformity



TPMSB0122EB

PHOTOMULTIPLIER TUBE R5984

CHARACTERISTICS (at 25 °C)

Parameter	Min.	Typ.	Max	Unit
Cathode Sensitivity				
Quantum Efficiency at 260 nm (Peak)	—	26	—	%
Luminous ^A	140	300	—	μA/lm
Radiant at 400 nm (Peak)	—	76	—	mA/W
Blue Sensitivity Index (CS 5-58) ^B	—	9	—	—
Red/White Ratio ^C	—	0.32	—	—
Anode Sensitivity				
Luminous ^D	400	3000	—	A/lm
Radiant at 400 nm	—	7.6×10^5	—	A/W
Gain ^D	—	1×10^7	—	
Anode Dark Current ^E				
After 30 minute Storage in Darkness	—	5	50	nA
ENI (Equivalent Noise Input) ^F	—	1.7×10^{-16}	—	W
Time response				
Anode Pulse Rise Time ^G	—	2.2	—	ns
Electron Transit Time ^H	—	22	—	ns
Anode Current Stability ^J				
Current Hysteresis	—	0.1	—	%
Voltage Hysteresis	—	1	—	%

NOTES

A: The light source is a tungsten filament lamp operated at a distribution temperature of 2856 K. Supply voltage is 100 volts between the cathode and all other electrodes connected together as anode.

B: The value is cathode output current when a blue filter(Corning CS 5-58 polished to 1/2 stock thickness) is interposed between the light source and the tube under the same condition as Note A.

C: Red/White ratio is the quotient of the cathode current measured using a red filter (Toshiba R-68) interposed between the light source and the tube the cathode current measured with the filter removed under the same condition as Note A.

D: Measured with the same light source as Note A and with the anode-to-cathode supply voltage and voltage distribution ratio shown in Table 1 below.

E: Measured with the same supply voltage and voltage distribution ratio as Note D after removal of light.

F: ENI is an indication of the photon-limited signal-to-noise ratio. It refers to the amount of light in watts to produce a signal-to-noise ratio of unity in the output of a photomultiplier tube.

$$ENI = \frac{\sqrt{2q \cdot Idb \cdot G \cdot \Delta f}}{S}$$

where q = Electronic charge (1.60×10^{-19} coulomb).

I_{db} = Anode dark current (after 30 minute storage) in amperes.

G = Gain.

Δf = Bandwidth of the system in hertz. 1 hertz is used.

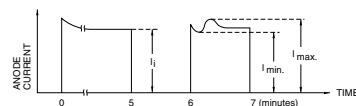
S = Anode radiant sensitivity in amperes per watt at the wavelength of peak response.

G: The rise time is the time for the output pulse to rise from 10 % to 90 % of the peak amplitude when the whole photocathode is illuminated by a delta function light pulse.

H: The electron transit time is the interval between the arrival of delta function light pulse at the entrance window of the tube and the time when the anode output reaches the peak amplitude. In measurement, the whole photocathode is illuminated.

J: Hysteresis is temporary instability in anode current after light and voltage are applied.

$$\text{Hysteresis} = \frac{I_{\max} - I_{\min}}{I_i} \times 100 (\%)$$



TPMSB0002EA

(1)Current Hysteresis

The tube is operated at 750 volts with an anode current of 1 micro-ampere for 5 minutes. The light is then removed from the tube for a minute. The tube is then re-illuminated by the previous light level for a minute to measure the variation.

(2)Voltage Hysteresis

The tube is operated at 300 volts with an anode current of 0.1 micro-ampere for 5 minutes. The light is then removed from the tube and the supply voltage is quickly increased to 800 volts. After a minute, the supply voltage is then reduced to the previous value and the tube is re-illuminated for a minute to measure the variation.

Table 1: Voltage Distribution Ratio

Electrode	K	Dy1	Dy2	Dy3	Dy4	Dy5	Dy6	Dy7	Dy8	Dy9	P
Distribution Ratio	1	1	1	1	1	1	1	1	1	1	1

Supply Voltage : 1000 V dc

K : Cathode, Dy : Dynode, P : Anode

Figure 2: Typical Spectral Response

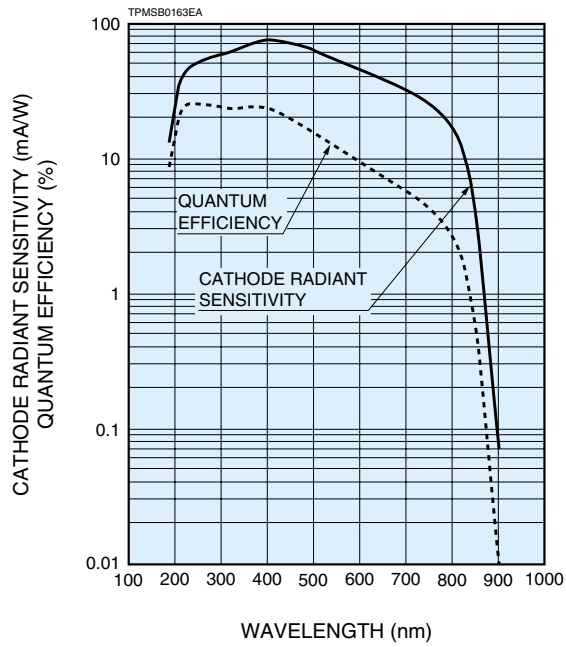


Figure 3: Anode Luminous Sensitivity and Gain Characteristics

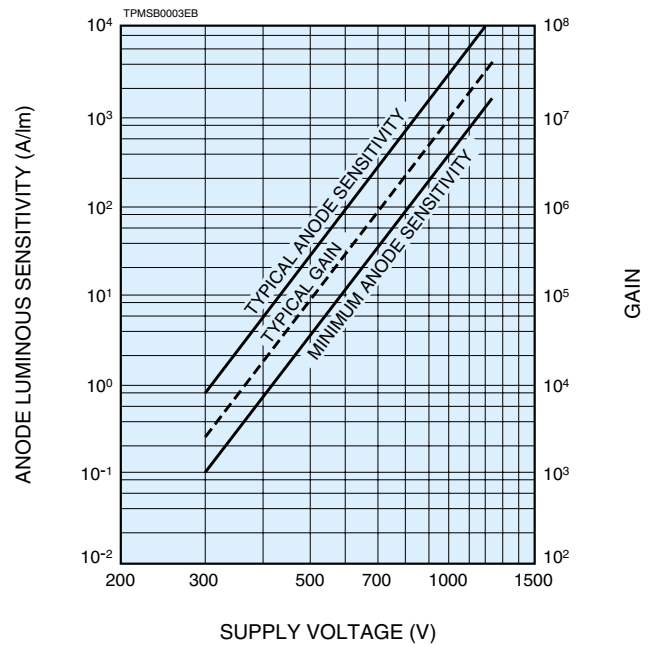
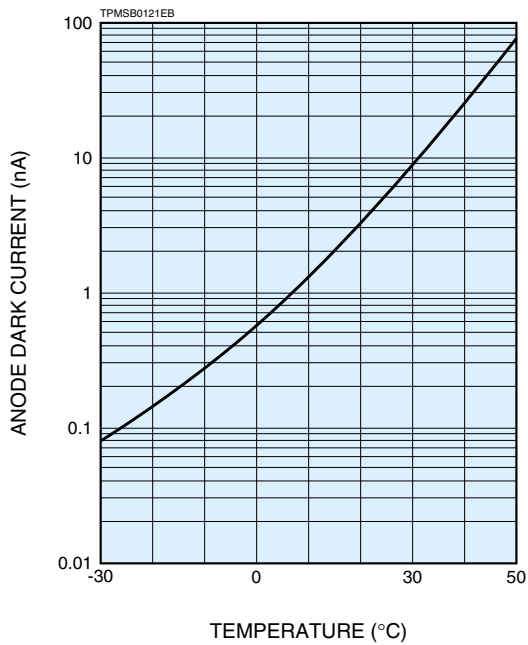
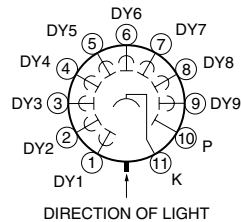
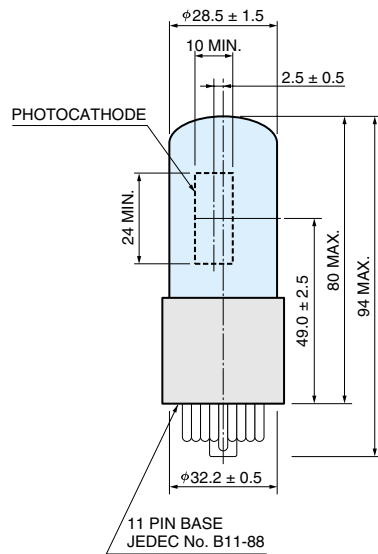


Figure 4: Temperature Characteristics of Dark Current (at 1000 V)



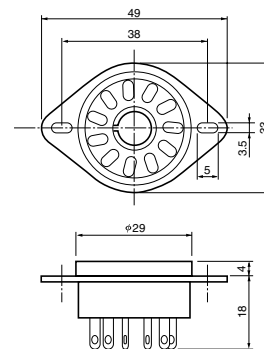
PHOTOMULTIPLIER TUBE R5984

Figure 5: Dimensional Outline and Basing Diagram (Unit: mm)



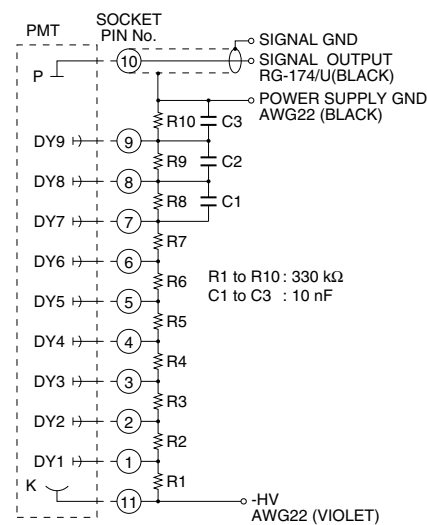
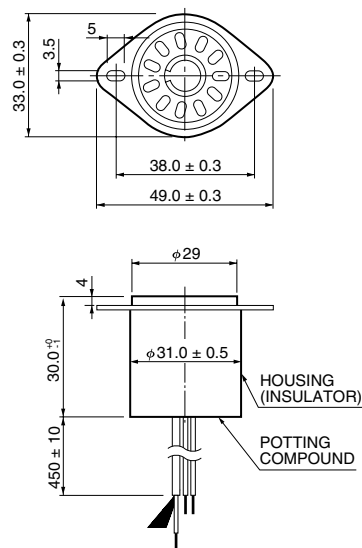
TPMSA0035EB

Figure 6: Socket E678-11A (Sold Separately)



TACCA0064EA

Figure 7: D Type Socket Assembly E717-63 (Sold Separately)



TACCA0002EH

* Hamamatsu also provides C4900 series compact high voltage power supplies and C6270 series DP type socket assemblies which incorporate a DC to DC converter type high voltage power supply.

Warning—Personal Safety Hazards
Electrical Shock—Operating voltages applied to this device present a shock hazard.

HAMAMATSU

WEB SITE <http://www.hamamatsu.com>

HAMAMATSU PHOTONICS K.K., Electron Tube Center

314-5, Shimokanzo, Toyooka-village, Iwata-gun, Shizuoka-ken, 438-0193, Japan, Telephone: (81)539/62-5248, Fax: (81)539/62-2205

U.S.A.: Hamamatsu Corporation: 360 Foothill Road, P. O. Box 6910, Bridgewater, N.J. 08807-0910, U.S.A., Telephone: (1)908-231-0960, Fax: (1)908-231-1218 E-mail: usa@hamamatsu.com

Germany: Hamamatsu Photonics Deutschland GmbH: Arzbergerstr. 10, D-82211 Herrsching am Ammersee, Germany, Telephone: (49)8152-375-0, Fax: (49)8152-2658 E-mail: info@hamamatsu.de

France: Hamamatsu Photonics France S.A.R.L.: 8, Rue du Saule Trapu, Parc du Moulin de Massy, 91882 Massy Cedex, France, Telephone: (33)1 69 53 71 00, Fax: (33)1 69 53 71 10 E-mail: infos@hamamatsu.fr

United Kingdom: Hamamatsu Photonics UK Limited: 2 Howard Court, 10 Tewin Road Welwyn Garden City Hertfordshire AL7 1BW, United Kingdom, Telephone: 44-(0)1707-294888, Fax: 44-(0)1707-325777 E-mail: info@hamamatsu.co.uk

North Europe: Hamamatsu Photonics Norden AB: Smidesvägen 12, SE-171-41 SOLNA, Sweden, Telephone: (46)8-509-031-00, Fax: (46)8-509-031-01 E-mail: info@hamamatsu.se

Italy: Hamamatsu Photonics Italia: S.R.L.: Strada della Moia, 1/E, 20020 Arese, (Milano), Italy, Telephone: (39)02-935 81 733, Fax: (39)02-935 81 741 E-mail: info@hamamatsu.it

TPMS1033E02
JUL. 2002 IP