



HERAF1601G THRU HERAF1608G

Isolation 16.0 AMPS. Glass Passivated High Efficient Rectifiers



Voltage Range
50 to 1000 Volts
Current
16.0 Amperes

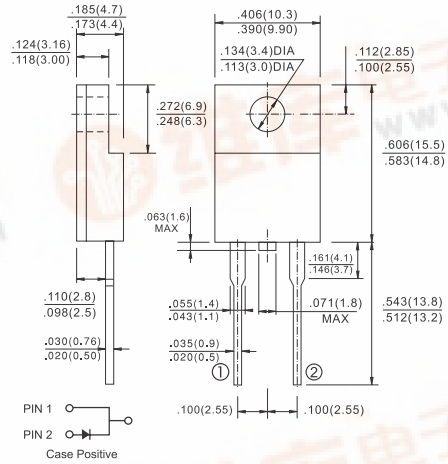
Features

- ✧ Low forward voltage drop
- ✧ High current capability
- ✧ High reliability
- ✧ High surge current capability

Mechanical Data

- ✧ Cases: ITO-220AC molded plastic
- ✧ Epoxy: UL 94V-O rate flame retardant
- ✧ Terminals: Leads solderable per MIL-STD-202, Method 208 guaranteed
- ✧ Polarity: As marked
- ✧ High temperature soldering guaranteed: 260°C/10 seconds 0.25", (6.35mm) from case.
- ✧ Mounting torque : 5 in – 1bs. max.
- ✧ Weight: 2.24 grams

ITO-220AC



Maximum Ratings and Electrical Characteristics

Rating at 25°C ambient temperature unless otherwise specified.
Single phase, half wave, 60 Hz, resistive or inductive load.
For capacitive load, derate current by 20%

Type Number	Symbol	HERAF 1601G	HERAF 1602G	HERAF 1603G	HERAF 1604G	HERAF 1605G	HERAF 1606G	HERAF 1607G	HERAF 1608G	Units
Maximum Recurrent Peak Reverse Voltage	V_{RRM}	50	100	200	300	400	600	800	1000	V
Maximum RMS Voltage	V_{RMS}	35	70	140	210	280	420	560	700	V
Maximum DC Blocking Voltage	V_{DC}	50	100	200	300	400	600	800	1000	V
Maximum Average Forward Rectified Current @ $T_C = 100^\circ\text{C}$	$I_{(AV)}$	16.0								A
Peak Forward Surge Current, 8.3 ms Single Half Sine-wave Superimposed on Rated Load (JEDEC method)	I_{FSM}	250								A
Maximum Instantaneous Forward Voltage @ 16.0A	V_F	1.0			1.3		1.7			V
Maximum DC Reverse Current @ $T_A = 25^\circ\text{C}$ at Rated DC Blocking Voltage @ $T_A = 125^\circ\text{C}$	I_R					10.0				uA
						400				uA
Maximum Reverse Recovery Time (Note 1)	T_{rr}	50				80			nS	
Typical Junction Capacitance (Note 2)	C_j	150				110			pF	
Typical Thermal Resistance (Note 3)	$R_{\theta JC}$	2.0								°C/W
Operating Temperature Range	T_J	-65 to +150								°C
Storage Temperature Range	T_{STG}	-65 to +150								°C

- Notes:
1. Reverse Recovery Test Conditions: $I_F = 0.5A$, $I_R = 1.0A$, $I_{RR} = 0.25A$
 2. Measured at 1 MHz and Applied Reverse Voltage of 4.0V D. C.
 3. Mounted on Heatsink Size of 2 in x 3 in x 0.25 in Al-Plate.



RATINGS AND CHARACTERISTIC CURVES (HERAF1601G THRU HERAF1608G)

FIG.1- REVERSE RECOVERY TIME CHARACTERISTIC AND TEST CIRCUIT DIAGRAM

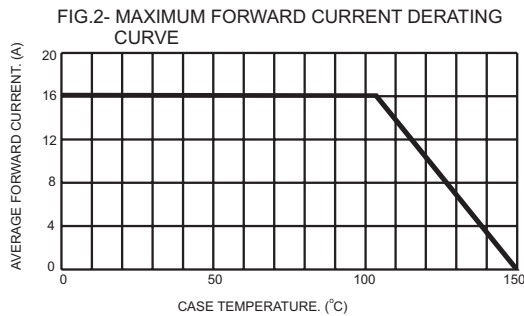
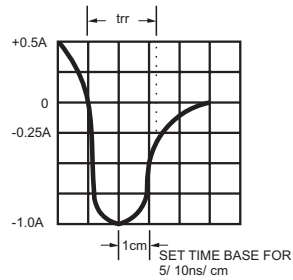
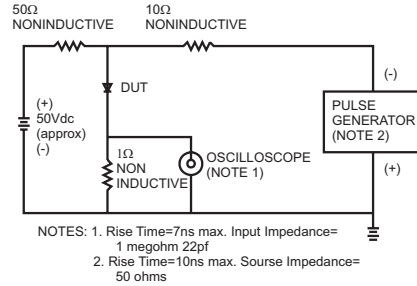


FIG.3- TYPICAL REVERSE CHARACTERISTICS

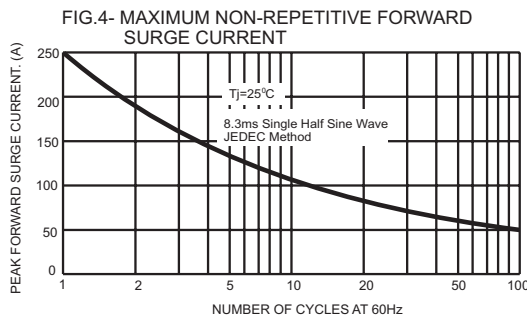
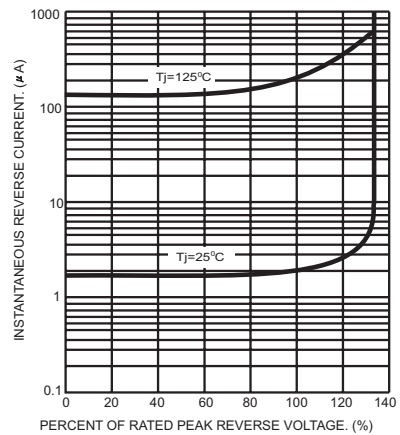


FIG.6- TYPICAL FORWARD CHARACTERISTICS

