

G E SOLID STATE

01 DE 3875081 0017311 0

3875081 G E SOLID STATE

01E 17311 D T-33-29

Darlington Power Transistors

File Number 973

RCA8766 Series

10-Ampere N-P-N Monolithic Darlington Power Transistors

350, 400, 450 Volts, 150 Watts
Gain of 100 at 4, 6A

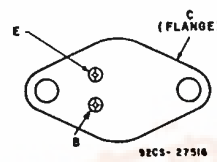
Features:

- Operates from IC without predriver
- Low leakage at high temperature

Applications:

- Power switching
- Automotive Ignition
- Solenoid drivers
- Series and shunt regulators

TERMINAL DESIGNATIONS



JEDEC TO-204AA

The RCA-8766 Series[•] are monolithic n-p-n silicon Darlington transistors designed for automotive electronic power applications. The construction of these devices provides good forward-bias second-breakdown capability; their high gain makes it possible for them to be driven directly from integrated circuits.

The devices in the series differ primarily in voltage ratings and in the current at which the dc gain is specified.

These devices are supplied in the JEDEC TO-204AA steel hermetic package.

[•]Formerly RCA Dev. Nos. TA8766 Series.

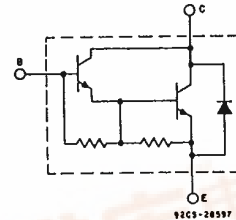


Fig. 1 - Schematic diagram for all types.

MAXIMUM RATINGS, Absolute-Maximum Values:

	RCA8766 RCA8766A	RCA8766B RCA8766C	RCA8766D RCA8766E	
V _{CBO}	350	400	450	V
V _{CER(sus)}				
R _{BE} = 50 Ω	350	400	450	V
V _{CEO(sus)}	350	400	450	V
V _{EB0}	5	5	5	V
I _C	10	10	10	A
I _{CM}	15	15	15	A
I _B	1	1	1	A
P _T				
T _C < 25°C	150	150	150	W
T _C > 25°C	See Fig. 2			
T _{stg} , T _J	-65 to +175			°C
T _L				
At distances ≥ 1/8 in. (3.17 mm) from case for 10 s max.	235			°C



Darlington Power Transistors

RCA8766 Series

ELECTRICAL CHARACTERISTICS, at Case Temperature (T_C) 25°C unless otherwise specified

CHARACTERISTIC	TEST CONDITIONS			LIMITS						UNITS
	VOLTAGE V dc	CURRENT A dc		RCA8766 RCA8766A		RCA8766B RCA8766C		RCA8766D RCA8766E		
	V_{CE}	I_C	I_B	Min.	Max.	Min.	Max.	Min.	Max.	
I_{CER} $R_{BE} = 50 \Omega$ $T_C = 150^\circ C$	350			-	1	-	-	-	-	mA
	400			-	-	-	1	-	-	
	450			-	-	-	-	-	1	
	350			-	10	-	-	-	-	
	400			-	-	-	10	-	-	
	450			-	-	-	-	-	10	
I_{EBO} $V_{BE} = -5 V$		0		-	60	-	60	-	60	mA
$V_{CEO(sus)}$		0.2 ^a	0	350	-	400	-	450	-	V
h_{FE} RCA8766 RCA8766A RCA8766B RCA8766C RCA8766D RCA8766E	3	6 ^a		100	-	-	-	-	-	
	3	4 ^a		100	-	-	-	-	-	
	3	6 ^a		-	-	100	-	-	-	
	3	4 ^a		-	-	100	-	-	-	
	3	6 ^a		-	-	-	-	100	-	
	3	4 ^a		-	-	-	-	100	-	
V_{BE} RCA8766 RCA8766A RCA8766B RCA8766C RCA8766D RCA8766E	3	6 ^a		-	2.5	-	-	-	-	V
	3	4 ^a		-	2.5	-	-	-	-	
	3	6 ^a		-	-	-	2.5	-	-	
	3	4 ^a		-	-	-	2.5	-	-	
	3	6 ^a		-	-	-	-	-	2.5	
	3	4 ^a		-	-	-	-	-	2.5	
$V_{CE(sat)}$ RCA8766 RCA8766A RCA8766B RCA8766C RCA8766D RCA8766E All Types		6 ^a	0.2 ^a	-	1.5	-	-	-	-	V
		4 ^a	0.133 ^a	-	1.5	-	-	-	-	
		6 ^a	0.2 ^a	-	-	-	1.5	-	-	
		4 ^a	0.133 ^a	-	-	-	1.5	-	-	
		6 ^a	0.2 ^a	-	-	-	-	-	1.5	
		4 ^a	0.133 ^a	-	-	-	-	-	1.5	
		8 ^a	0.5 ^a	-	2.5	-	2.5	-	2.5	
V_F		7 ^a		-	2	-	2	-	2	V
$ h_{fe} $ f = 1 MHz	5	1		10	-	10	-	10	-	
$I_{S/b}$ t = 1 s, nonrep.	30			5	-	5	-	5	-	A
$R_{\theta JC}$				-	1	-	1	-	1	°C/W

^a Pulsed: Pulse duration = 300 μ s, duty factor = 1.8%.

RCA8766 Series

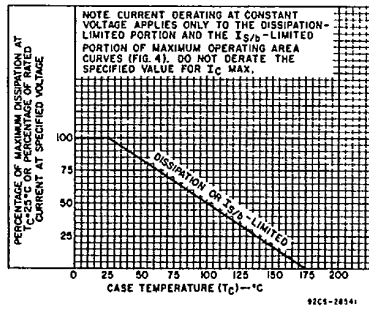


Fig. 2 — Derating curves for all types.

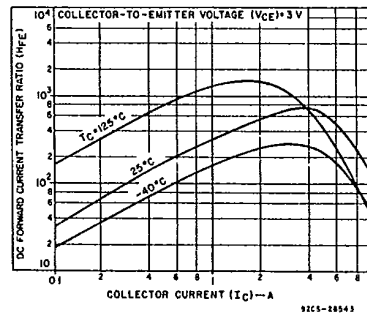


Fig. 3 — Typical DC beta characteristics for all types.

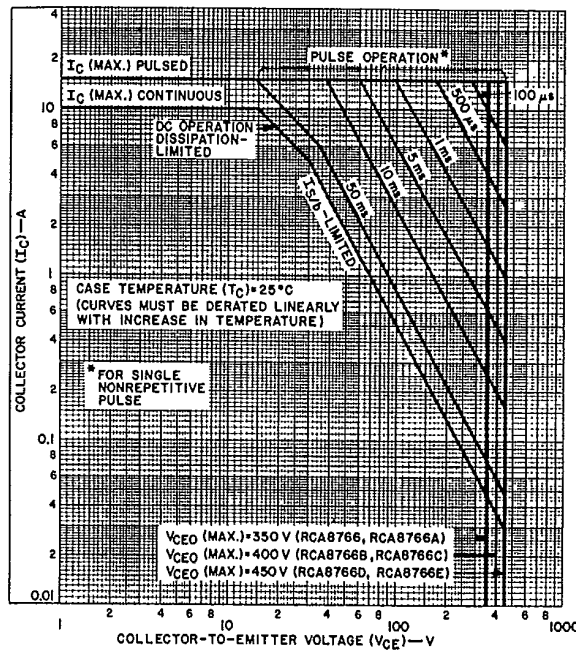


Fig. 4 — Maximum operating areas for all types.

3875081 G E SOLID STATE
Darlington Power Transistors

01E 17314 D T-33-29

RCA8766 Series

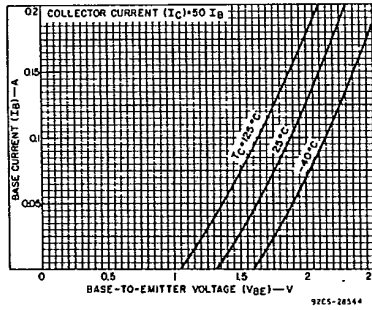


Fig. 5 — Typical input characteristics for all types.

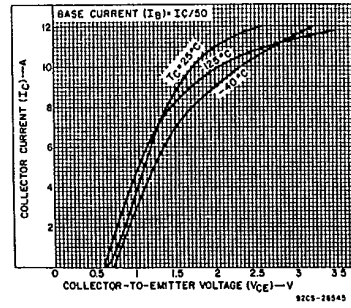


Fig. 6 — Typical output characteristics for all types.

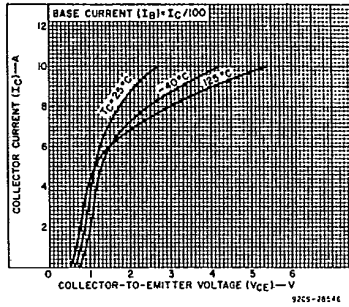


Fig. 7 — Typical output characteristics for all types.

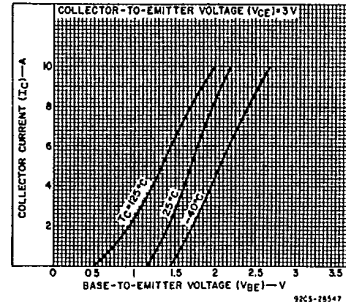


Fig. 8 — Typical transfer characteristics all types.