

15A, 1200V Hyperfast Diode

The RHRP15120 is a hyperfast diode with soft recovery characteristics ($t_{rr} < 65\text{ns}$). It has half the recovery time of ultrafast diodes and is of silicon nitride passivated ion-implanted epitaxial planar construction.

This device is intended for use as a freewheeling/clamping diode and rectifier in a variety of switching power supplies and other power switching applications. Its low stored charge and hyperfast soft recovery minimize ringing and electrical noise in many power switching circuits, thus reducing power loss in the switching transistors.

Formerly developmental type TA49098.

Ordering Information

| PART NUMBER | PACKAGE | BRAND |
|-------------|----------|----------|
| RHRP15120 | TO-220AC | RHR15120 |

NOTE: When ordering, use the entire part number.

Symbol



Features

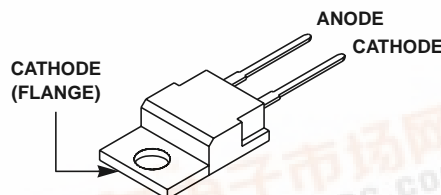
- Hyperfast with Soft Recovery <65ns
- Operating Temperature 175°C
- Reverse Voltage 1200V
- Avalanche Energy Rated
- Planar Construction

Applications

- Switching Power Supplies
- Power Switching Circuits
- General Purpose

Packaging

JEDEC TO-220AC



Absolute Maximum Ratings $T_C = 25^\circ\text{C}$, Unless Otherwise Specified

| | RHRP15120 | UNITS |
|--|------------|-------|
| Peak Repetitive Reverse Voltage V_{RRM} | 1200 | V |
| Working Peak Reverse Voltage V_{RWM} | 1200 | V |
| DC Blocking Voltage V_R | 1200 | V |
| Average Rectified Forward Current $I_F(AV)$ ($T_C = 140^\circ\text{C}$) | 15 | A |
| Repetitive Peak Surge Current I_{FRM} (Square Wave, 20kHz) | 30 | A |
| Nonrepetitive Peak Surge Current I_{FSM} (Halfwave, 1 Phase, 60Hz) | 200 | A |
| Maximum Power Dissipation P_D | 100 | W |
| Avalanche Energy (See Figures 10 and 11) E_{AVL} | 20 | mJ |
| Operating and Storage Temperature T_{STG}, T_J | -65 to 175 | °C |

RHRP15120

Electrical Specifications $T_C = 25^\circ\text{C}$, Unless Otherwise Specified

| SYMBOL | TEST CONDITION | MIN | TYP | MAX | UNITS |
|-----------------|--|-----|-----|-----|---------------------------|
| V_F | $I_F = 15\text{A}$ | - | - | 3.2 | V |
| | $I_F = 15\text{A}$, $T_C = 150^\circ\text{C}$ | - | - | 2.6 | V |
| I_R | $V_R = 1200\text{V}$ | - | - | 100 | μA |
| | $V_R = 1200\text{V}$, $T_C = 150^\circ\text{C}$ | - | - | 500 | μA |
| t_{rr} | $I_F = 1\text{A}$, $dI_F/dt = 100\text{A}/\mu\text{s}$ | - | - | 65 | ns |
| | $I_F = 15\text{A}$, $dI_F/dt = 100\text{A}/\mu\text{s}$ | - | - | 75 | ns |
| t_a | $I_F = 15\text{A}$, $dI_F/dt = 100\text{A}/\mu\text{s}$ | - | 36 | - | ns |
| t_b | $I_F = 15\text{A}$, $dI_F/dt = 100\text{A}/\mu\text{s}$ | - | 28 | - | ns |
| Q_{RR} | $I_F = 15\text{A}$, $dI_F/dt = 100\text{A}/\mu\text{s}$ | - | 150 | - | nC |
| C_J | $V_R = 10\text{V}$, $I_F = 0\text{A}$ | - | 55 | - | pF |
| $R_{\theta JC}$ | | - | - | 1.5 | $^\circ\text{C}/\text{W}$ |

DEFINITIONS

V_F = Instantaneous forward voltage ($p_w = 300\mu\text{s}$, $D = 2\%$).

I_R = Instantaneous reverse current.

t_{rr} = Reverse recovery time (See Figure 9), summation of $t_a + t_b$.

t_a = Time to reach peak reverse current (See Figure 9).

t_b = Time from peak I_{RM} to projected zero crossing of I_{RM} based on a straight line from peak I_{RM} through 25% of I_{RM} (See Figure 9).

Q_{RR} = Reverse recovery charge.

C_J = Junction capacitance.

$R_{\theta JC}$ = Thermal resistance junction to case.

p_w = pulse width.

D = duty cycle.

Typical Performance Curves

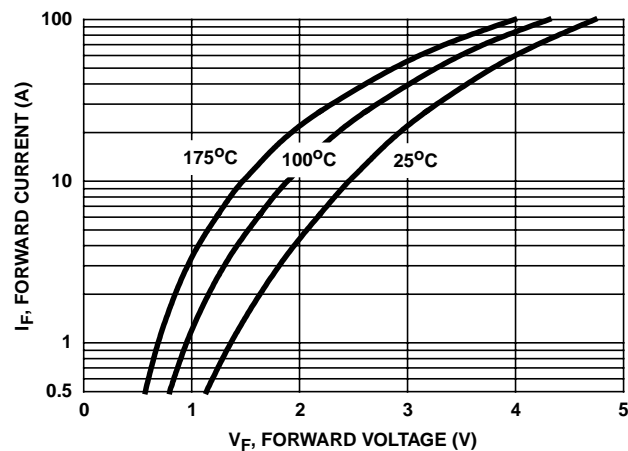


FIGURE 1. FORWARD CURRENT vs FORWARD VOLTAGE

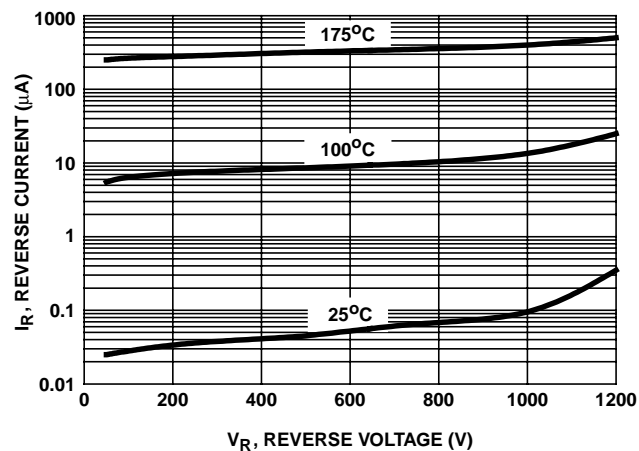


FIGURE 2. REVERSE CURRENT vs REVERSE VOLTAGE

Typical Performance Curves (Continued)

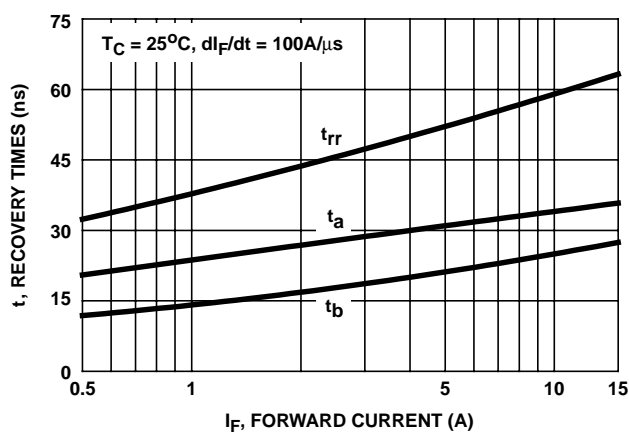


FIGURE 3. t_{rr} , t_a AND t_b CURVES vs FORWARD CURRENT

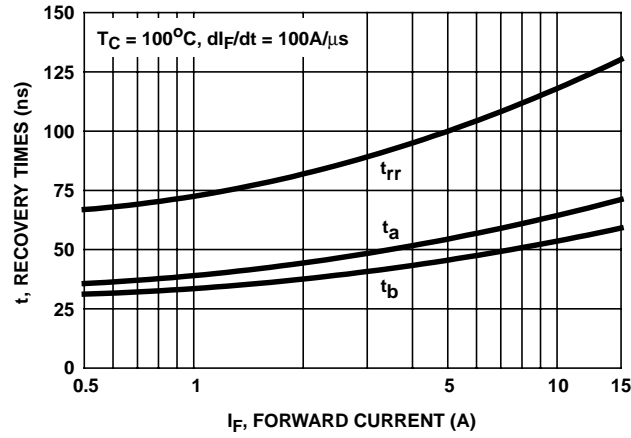


FIGURE 4. t_{rr} , t_a AND t_b CURVES vs FORWARD CURRENT

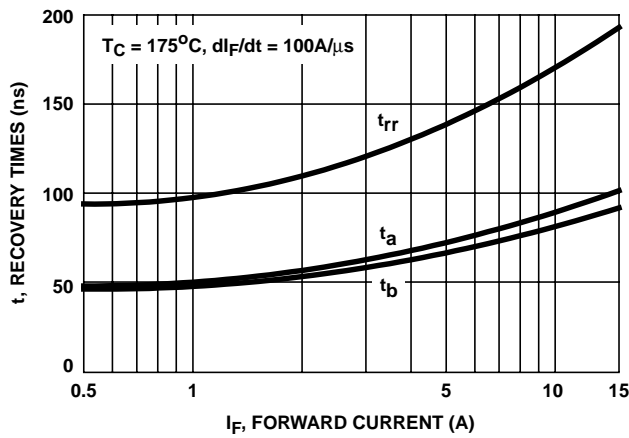


FIGURE 5. t_{rr} , t_a AND t_b CURVES vs FORWARD CURRENT

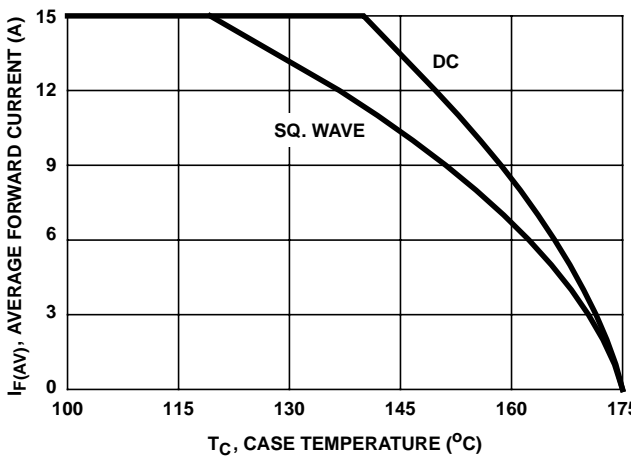


FIGURE 6. CURRENT DERATING CURVE

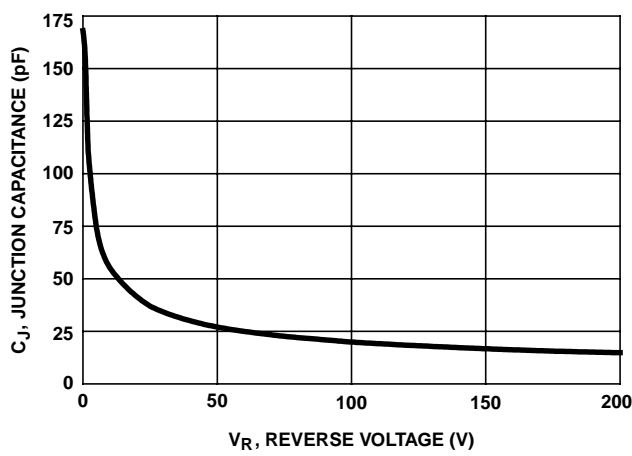
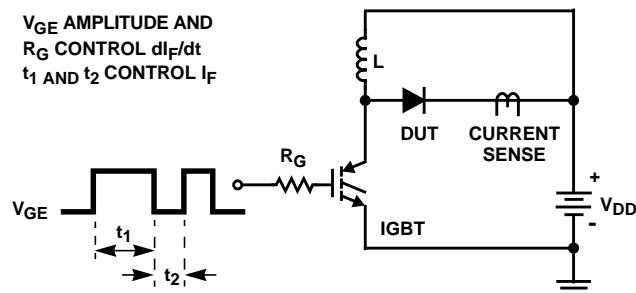
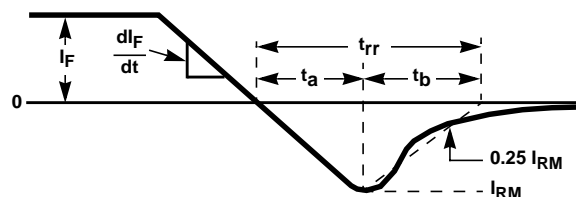


FIGURE 7. JUNCTION CAPACITANCE vs REVERSE VOLTAGE

Test Circuits and Waveforms

FIGURE 8. t_{rr} TEST CIRCUITFIGURE 9. t_{rr} WAVEFORMS AND DEFINITIONS

$I_{MAX} = 1A$
 $L = 40mH$
 $R < 0.1\Omega$
 $E_{AVL} = 1/2LI^2 [V_{R(AVL)}/(V_{R(AVL)} - V_{DD})]$
 $Q_1 = IGBT (BV_{CES} > DUT V_{R(AVL)})$

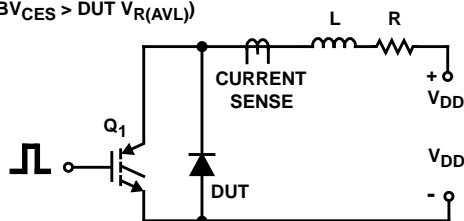


FIGURE 10. AVALANCHE ENERGY TEST CIRCUIT

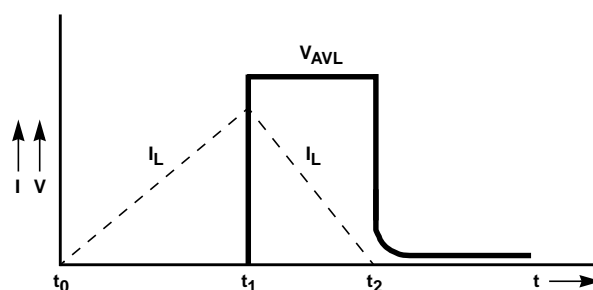


FIGURE 11. AVALANCHE CURRENT AND VOLTAGE WAVEFORMS

All Intersil semiconductor products are manufactured, assembled and tested under **ISO9000** quality systems certification.

Intersil semiconductor products are sold by description only. Intersil Corporation reserves the right to make changes in circuit design and/or specifications at any time without notice. Accordingly, the reader is cautioned to verify that data sheets are current before placing orders. Information furnished by Intersil is believed to be accurate and reliable. However, no responsibility is assumed by Intersil or its subsidiaries for its use; nor for any infringements of patents or other rights of third parties which may result from its use. No license is granted by implication or otherwise under any patent or patent rights of Intersil or its subsidiaries.

For information regarding Intersil Corporation and its products, see web site **www.intersil.com**