

## Contents

Features .....	1
Pin Assignment .....	1
Pin Functions .....	1
Block Diagram .....	2
Instruction Set .....	2
Absolute Maximum Ratings .....	2
Recommended Operating Conditions .....	3
Pin Capacitance .....	3
Endurance .....	3
DC Electrical Characteristics .....	4
AC Electrical Characteristics .....	5
Operation .....	6
Receiving a Start-bit .....	13
Three-wire Interface .....	13
Dimensions .....	14
Ordering Information .....	14
Characteristics .....	15

The S-29XX0A Series is high speed, low power 1K/2K/4K-bit E<sup>2</sup>PROM with a wide operating voltage range. They are organized as 64-word×16-bit, 128-word×16-bit and 256-word×16-bit, respectively. Each is capable of sequential read, at which time addresses are automatically incremented in 16-bit blocks. The instruction code is compatible with the NM93CSXX Series.

■ Features

- Low power consumption
  - Standby : 1.0 μA Max. (VCC = 6.5 V)
  - Operating : 0.8 mA Max. (VCC = 5.5 V)
  - : 0.4 mA Max. (VCC = 2.5 V)
- Wide operating voltage range
  - Write : 2.5 to 6.5 V
  - Read : 1.8 to 6.5 V
- Sequential read capable
- Endurance : 10<sup>5</sup> cycles/word
- Data retention : 10 years
- S-29130A : 1K bits NM93CS46 instruction code compatible
- S-29220A : 2K bits NM93CS56 instruction code compatible
- S-29230A : 2K bits CAT35C102 instruction code compatible
- S-29330A : 4K bits NM93CS66 instruction code compatible

■ Pin Assignment

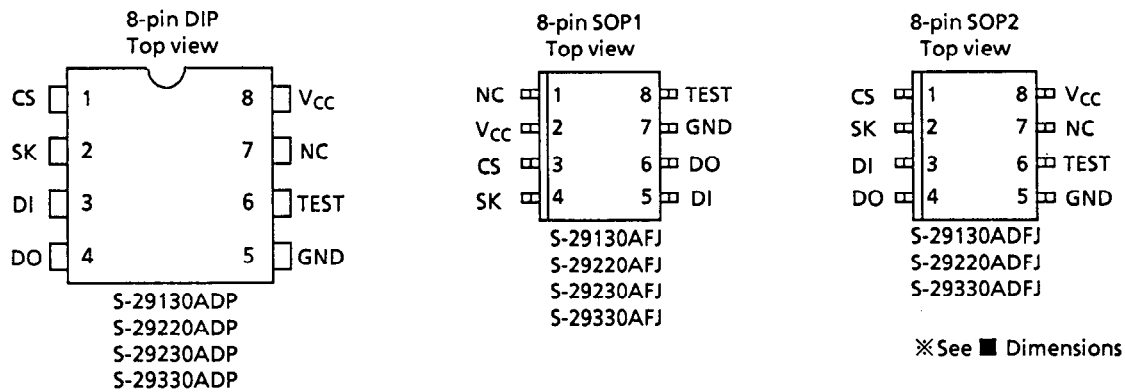


Figure 1

■ Pin Functions

Table 1

Name	Pin Number			Function
	DIP	SOP1	SOP2	
CS	1	3	1	Chip select input
SK	2	4	2	Serial clock input
DI	3	5	3	Serial data input
DO	4	6	4	Serial data output
GND	5	7	5	Ground
TEST	6	8	6	Test pin (normally kept open) (can be connected to GND or V <sub>CC</sub> )
NC	7	1	7	No Connection
V <sub>CC</sub>	8	2	8	Power supply

# CMOS SERIAL E<sup>2</sup>PROM S-29XX0A Series

## ■ Block Diagram

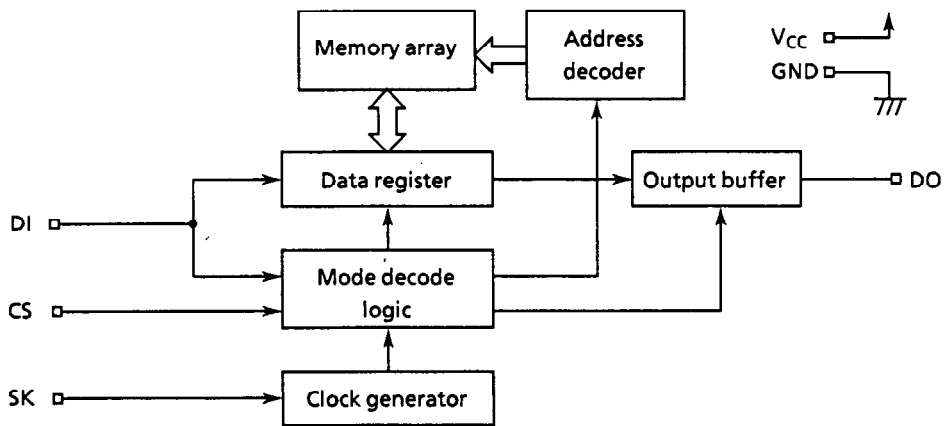


Figure 2

## ■ Instruction Set

Table 2

Instruction	Start Bit	Op code	Address				Data
			S-29130A	S-29230A	S-29220A	S-29330A	
READ (Read data)	1	10	A <sub>5</sub> to A <sub>0</sub>	A <sub>6</sub> to A <sub>0</sub>	XA <sub>6</sub> to A <sub>0</sub>	A <sub>7</sub> to A <sub>0</sub>	D <sub>15</sub> to D <sub>0</sub> Output*
WRITE (Write data)	1	01	A <sub>5</sub> to A <sub>0</sub>	A <sub>6</sub> to A <sub>0</sub>	XA <sub>6</sub> to A <sub>0</sub>	A <sub>7</sub> to A <sub>0</sub>	D <sub>15</sub> to D <sub>0</sub> Input
ERASE (Erase data)	1	11	A <sub>5</sub> to A <sub>0</sub>	A <sub>6</sub> to A <sub>0</sub>	XA <sub>6</sub> to A <sub>0</sub>	A <sub>7</sub> to A <sub>0</sub>	—
WRAL (Write all)	1	00	01xxxx	01xxxxx	01xxxxxx	01xxxxxxx	D <sub>15</sub> to D <sub>0</sub> Input
ERAL (Erase all)	1	00	10xxxx	10xxxxx	10xxxxxx	10xxxxxxx	—
EWEN (Program enable)	1	00	11xxxx	11xxxxx	11xxxxxx	11xxxxxxx	—
EWDS (Program disable)	1	00	00xxxx	00xxxxx	00xxxxxx	00xxxxxxx	—

x : Doesn't matter.

\* : Addresses are continuously incremented.

## ■ Absolute Maximum Ratings

Table 3

Parameter	Symbol	Ratings	Unit
Power supply voltage	V <sub>CC</sub>	-0.3 to +7.0	V
Input voltage	V <sub>IN</sub>	-0.3 to V <sub>CC</sub> + 0.3	V
Output voltage	V <sub>OUT</sub>	-0.3 to V <sub>CC</sub>	V
Storage temperature under bias	T <sub>bias</sub>	-50 to +95	°C
Storage temperature	T <sub>stg</sub>	-65 to +150	°C

■ Recommended Operating Conditions

Table 4

Parameter	Symbol	Conditions	Min.	Typ.	Max.	Unit
Power supply voltage	V <sub>CC</sub>	Read Operation Write Enable/Disable	1.8	—	6.5	V
		Write Operation	2.5	—	6.5	V
High level input voltage	V <sub>IH</sub>	V <sub>CC</sub> = 5.5 to 6.5 V	0.8 × V <sub>CC</sub>	—	V <sub>CC</sub>	V
		V <sub>CC</sub> = 4.5 to 5.5 V	2.0	—	V <sub>CC</sub>	V
		V <sub>CC</sub> = 2.7 to 4.5 V	0.8 × V <sub>CC</sub>	—	V <sub>CC</sub>	V
		V <sub>CC</sub> = 1.8 to 2.7 V	0.8 × V <sub>CC</sub>	—	V <sub>CC</sub>	V
Low level input voltage	V <sub>IL</sub>	V <sub>CC</sub> = 5.5 to 6.5 V	0.0	—	0.2 × V <sub>CC</sub>	V
		V <sub>CC</sub> = 4.5 to 5.5 V	0.0	—	0.8	V
		V <sub>CC</sub> = 2.7 to 4.5 V	0.0	—	0.2 × V <sub>CC</sub>	V
		V <sub>CC</sub> = 1.8 to 2.7 V	0.0	—	0.15 × V <sub>CC</sub>	V
Operating temperature	T <sub>opr</sub>		-40	—	+ 85	°C

■ Pin Capacitance

Table 5

(T<sub>a</sub> = 25°C, f = 1.0 MHz, V<sub>CC</sub> = 5 V)

Parameter	Symbol	Conditions	Min.	Typ.	Max.	Unit
Input Capacitance	C <sub>IN</sub>	V <sub>IN</sub> = 0 V	—	—	8	pF
Output Capacitance	C <sub>OUT</sub>	V <sub>OUT</sub> = 0 V	—	—	10	pF

■ Endurance

Table 6

Parameter	Symbol	Min.	Typ.	Max.	Unit
Endurance	N <sub>W</sub>	10 <sup>5</sup>	—	—	cycles/word

# CMOS SERIAL E<sup>2</sup>PROM

## S-29XX0A Series

### DC Electrical Characteristics

Table 7

Parameter	Smb1	Conditions	V <sub>CC</sub> = 5.5 V to 6.5 V			V <sub>CC</sub> = 4.5 V to 5.5 V			V <sub>CC</sub> = 2.5 to 4.5 V			V <sub>CC</sub> = 1.8 to 2.5 V			Unit
			Min.	Typ.	Max.	Min.	Typ.	Max.	Min.	Typ.	Max.	Min.	Typ.	Max.	
Current consumption (READ)	I <sub>CC1</sub>	DO unloaded	—	—	1.0	—	—	0.8	—	—	0.6	—	—	0.4	mA
Current consumption (PROGRAM)	I <sub>CC2</sub>	DO unloaded	—	—	2.5	—	—	2.0	—	—	1.5				mA

Table 8

Parameter	Smb1	Conditions	V <sub>CC</sub> = 4.5 V to 6.5 V			V <sub>CC</sub> = 2.5 to 4.5 V			V <sub>CC</sub> = 1.8 to 2.5 V			Unit
			Min.	Typ.	Max.	Min.	Typ.	Max.	Min.	Typ.	Max.	
Standby current consumption	I <sub>SB</sub>	CS = GND DO = Open Connected to V <sub>CC</sub> or GND	—	—	1.0	—	—	0.6	—	—	0.4	μA
Input leakage current	I <sub>LI</sub>	V <sub>IN</sub> = GND to V <sub>CC</sub>	—	0.1	1.0	—	0.1	1.0	—	0.1	1.0	μA
Output leakage current	I <sub>LO</sub>	V <sub>OUT</sub> = GND to V <sub>CC</sub>	—	0.1	1.0	—	0.1	1.0	—	0.1	1.0	μA
Low level output voltage	V <sub>OL</sub>	I <sub>OL</sub> = 2.1 mA	—	—	0.45							V
		I <sub>OL</sub> = 100 μA	—	—	0.1	—	—	0.1	—	—	0.1	V
High level output voltage	V <sub>OH</sub>	I <sub>OH</sub> = -400 μA	2.4	—	—							V
		I <sub>OH</sub> = -100 μA	V <sub>CC</sub> -0.7	—	—	V <sub>CC</sub> -0.7	—	—				V
		I <sub>OH</sub> = -10 μA	V <sub>CC</sub> -0.7	—	—	V <sub>CC</sub> -0.7	—	—	V <sub>CC</sub> -0.3	—	—	V
Write enable latch data hold voltage	V <sub>DH</sub>	Only when write disable mode	1.5	—	—	1.5	—	—	1.5	—	—	V

■ AC Electrical Characteristics

Table 9

Input pulse voltage	$0.1 \times V_{CC}$ to $0.9 \times V_{CC}$
Output reference voltage	$0.5 \times V_{CC}$
Output load	100pF

Table 10

Parameter	SmbI	$V_{CC} = 4.5$ to $6.5V$			$V_{CC} = 2.5$ to $4.5V$			$V_{CC} = 1.8$ to $2.5V$			Unit
		Min.	Typ.	Max.	Min.	Typ.	Max.	Min.	Typ.	Max.	
CS setup time	$t_{CSS}$	0.2	—	—	0.4	—	—	1.0	—	—	$\mu s$
CS hold time	$t_{CSH}$	0.2	—	—	0.4	—	—	1.0	—	—	$\mu s$
CS deselect time	$t_{CDS}$	0.2	—	—	0.2	—	—	0.4	—	—	$\mu s$
Data setup time	$t_{DS}$	0.2	—	—	0.4	—	—	0.8	—	—	$\mu s$
Data hold time	$t_{DH}$	0.2	—	—	0.4	—	—	0.8	—	—	$\mu s$
Output delay	$t_{PD}$	—	—	0.4	—	—	1.0	—	—	2.0	$\mu s$
Clock frequency	$f_{SK}$	0	—	2.0	0	—	0.5	—	—	0.25	MHz
Clock pulse width	$t_{SKH}, t_{SKL}$	0.25	—	—	1.0	—	—	2.0	—	—	$\mu s$
Output disable time	$t_{HZ1}, t_{HZ2}$	0	—	0.15	0	—	0.5	0	—	1.0	$\mu s$
Output enable time	$t_{SV}$	0	—	0.15	0	—	0.5	0	—	1.0	$\mu s$
Programming time	$t_{PR}$	—	4.0	10.0	—	4.0	10.0				ms

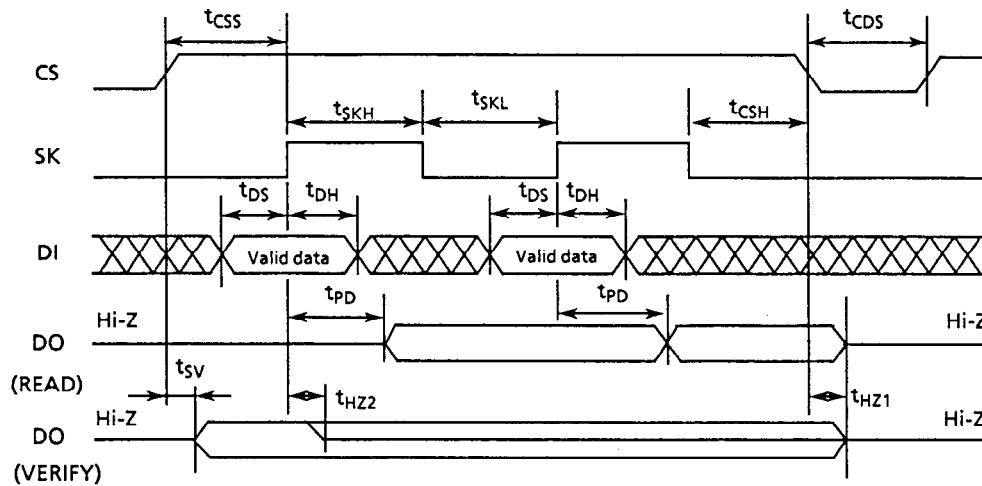


Figure 3 Timing Chart

# CMOS SERIAL E<sup>2</sup>PROM

## S-29XX0A Series

### ■ Operation

Instructions (in the order of start-bit, instruction, address, and data) are latched to DI in synchronization with the rising edge of SK after CS goes high. A start-bit can only be recognized when the high of DI is latched to the rising edge of SK when CS goes from low to high, it is impossible for it to be recognized as long as DI is low, even if there are SK pulses after CS goes high. Any SK pulses input while DI is low are called "dummy clocks." Dummy clocks can be used to adjust the number of clock cycles needed by the serial IC to match those sent out by the CPU. Instruction input finishes when CS goes low, where it must be between commands during  $t_{CDs}$ .

All input, including DI and SK signals, is ignored while CS is low, which is stand-by mode.

#### 1. Read

The READ instruction reads data from a specified address. After A0 is latched at the rising edge of SK, DO output changes from a high-impedance state (Hi-Z) to low level output. Data is continuously output in synchronization with the rise of SK.

When all of the data (D0) in the specified address has been read, the data in the next address can be read with the input of another SK clock. Thus, it is possible for all of the data addresses to be read through the continuous input of SK clocks as long as CS is high.

The last address ( $A_n \dots A_1 A_0 = 1 \dots 11$ ) rolls over to the top address ( $A_n \dots A_0 = 0 \dots 00$ ).

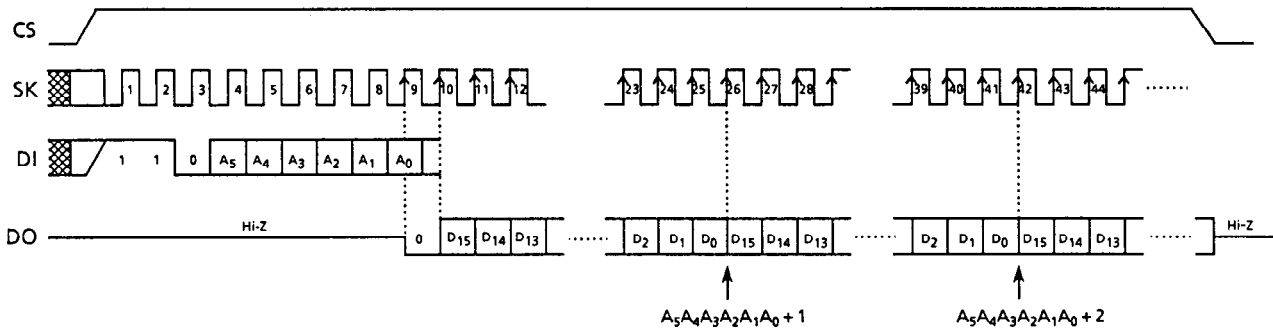


Figure 4 Read Timing (S-29130A)

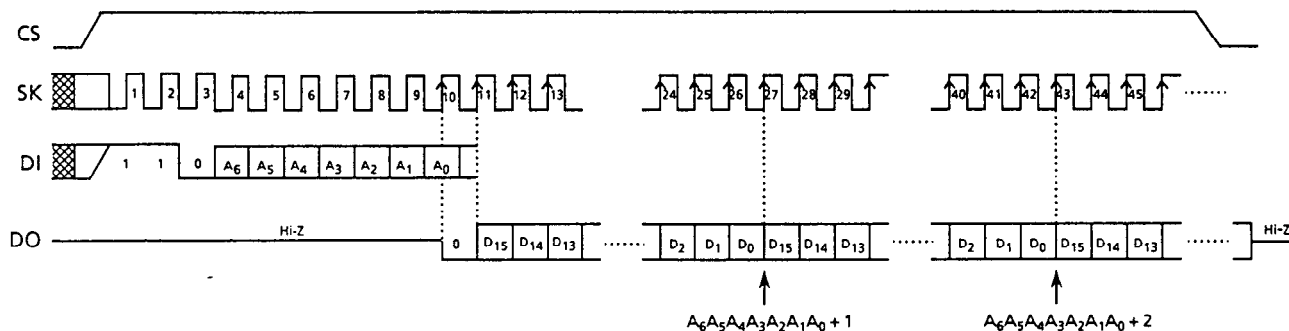


Figure 5 Read Timing (S-29230A)

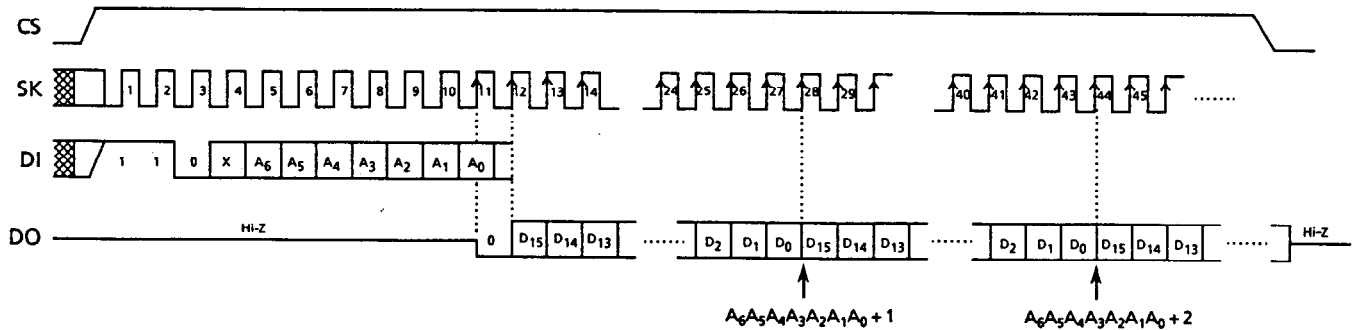


Figure 6 Read Timing (S-29220A)

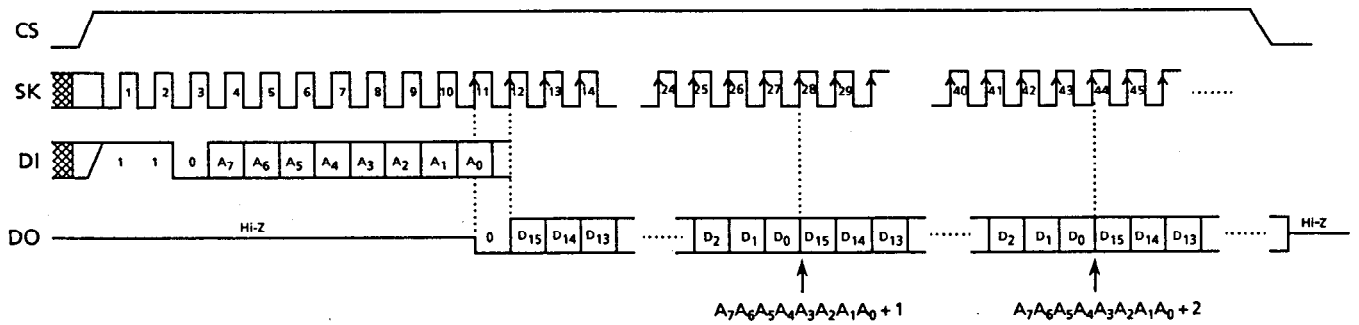


Figure 7 Read Timing (S-29330A)

## 2. WRITE (WRITE, ERASE, WRAL, ERAL)

There are four write instructions, WRITE, ERASE, WRAL, and ERAL. Each automatically begins writing to the non-volatile memory when CS goes low at the completion of the specified clock input.

The write operation is completed in 10 ms ( $t_{PR}$  Max.), and the typical write period is less than 5 ms. In the S-29XX0A Series, it is easy to VERIFY the completion of the write operation in order to minimize the write cycle by setting CS to high and checking the DO pin, which is low during the write operation and high after its completion. This VERIFY procedure can be executed over and over again.

Because all SK and DI inputs are ignored during the write operation, any input of instruction will also be disregarded. When DO outputs high after completion of the write operation or if it is in the high-impedance state (Hi-Z), the input of instructions is available. Even if the DO pin remains high, it will enter the high-impedance state upon the recognition of a high of DI (start-bit) attached to the rising edge of an SK pulse. (see Figure 3).

DI input should be low during the VERIFY procedure.



# CMOS SERIAL E<sup>2</sup>PROM S-29XX0A Series

## 2.1 WRITE

This instruction writes 16-bit data to a specified address.

After changing CS to high, input a start-bit, op-code (WRITE), address, and 16-bit data. If there is a data overflow of more than 16 bits, only the last 16-bits of the data is considered valid. Changing CS to low will start the WRITE operation. It is not necessary to make the data "1" before initiating the WRITE operation.

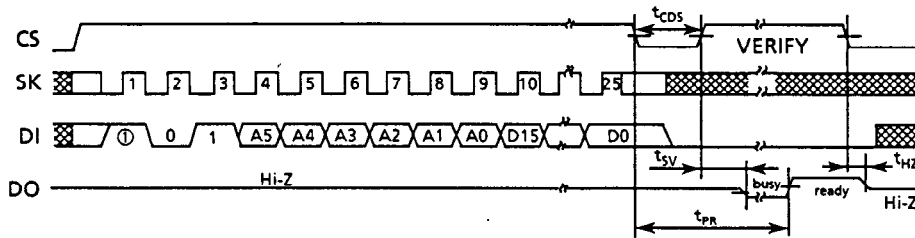


Figure 8 WRITE Timing (S-29130A)

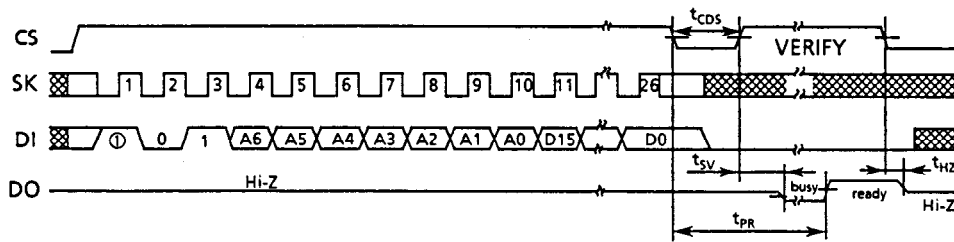


Figure 9 WRITE Timing (S-29230A)

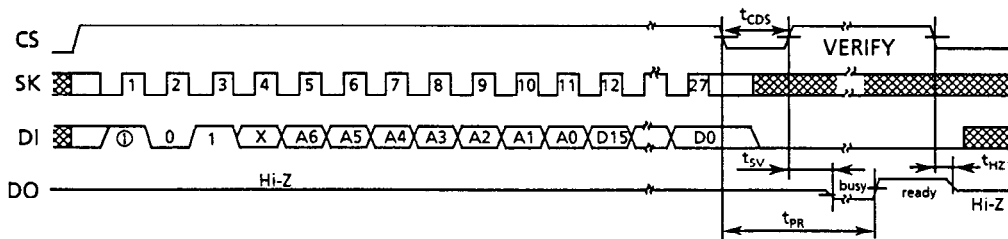


Figure 10 WRITE Timing (S-29220A)

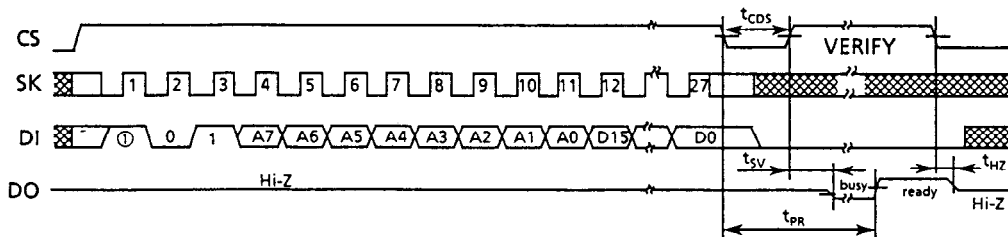


Figure 11 WRITE Timing (S-29330A)

2.2 ERASE

This command erases 16-bit data in a specified address.

After changing CS to high, input a start-bit, op-code (ERASE), and address. It is not necessary to input data. Changing CS to low will start the ERASE operation, which changes every bit of the 16 bit data to "1."

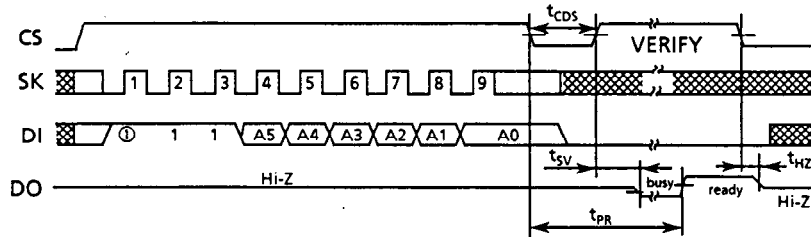


Figure 12 ERASE Timing (S-29130A)

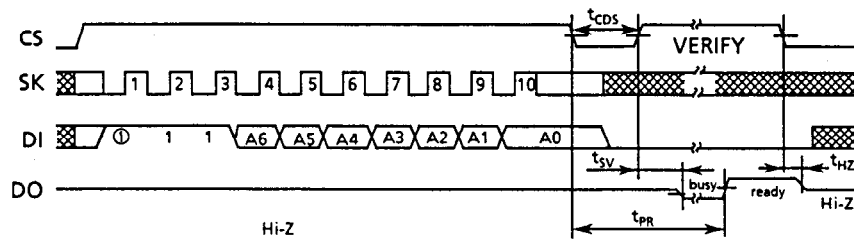


Figure 13 ERASE Timing (S-29230A)

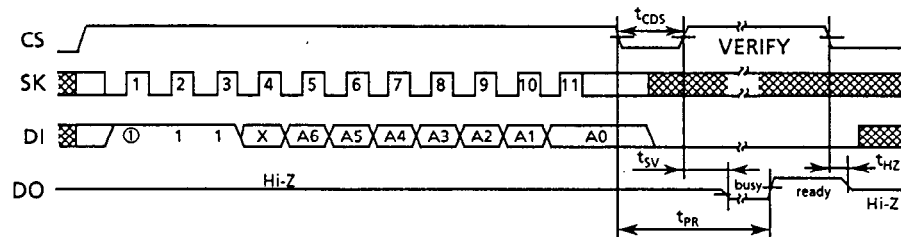


Figure 14 ERASE Timing (S-29220A)

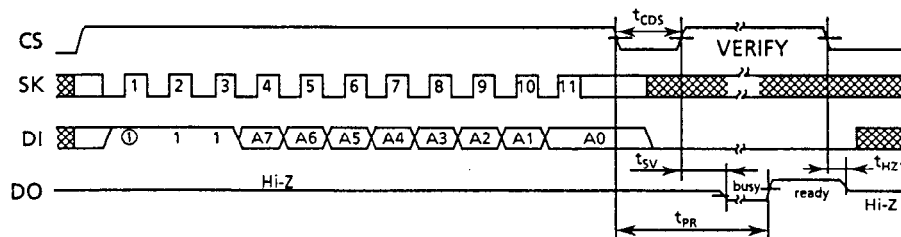


Figure 15 ERASE Timing (S-29330A)

# CMOS SERIAL E<sup>2</sup>PROM S-29XX0A Series

## 2.3 WRAL

This instruction writes the same 16-bit data into every address.

After changing CS to high, input a start-bit, op-code (WRAL), address (optional), and 16-bit data. If there is a data overflow of more than 16 bits, only the last 16-bits of the data is considered valid. Changing CS to low will start the WRAL operation. It is not necessary to make the data "1" before initiating the WRAL operation.

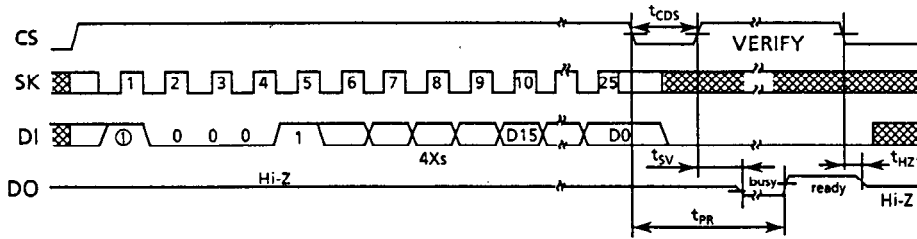


Figure 16 WRAL Timing (S-29130A)

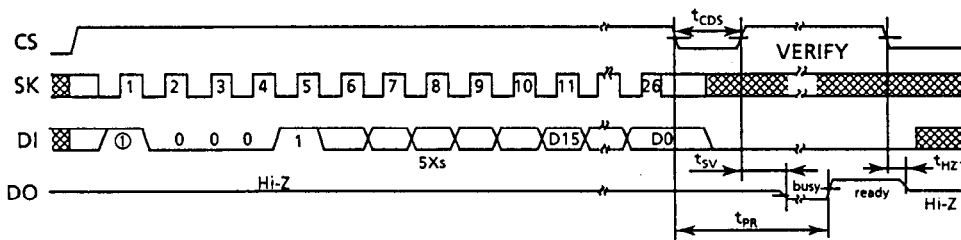


Figure 17 WRAL Timing (S-29230A)

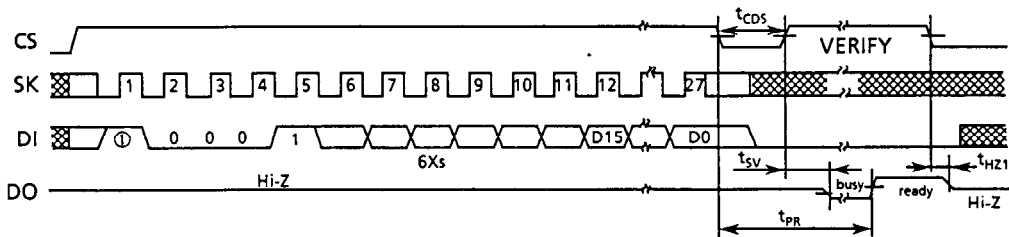


Figure 18 WRAL Timing (S-29220A)

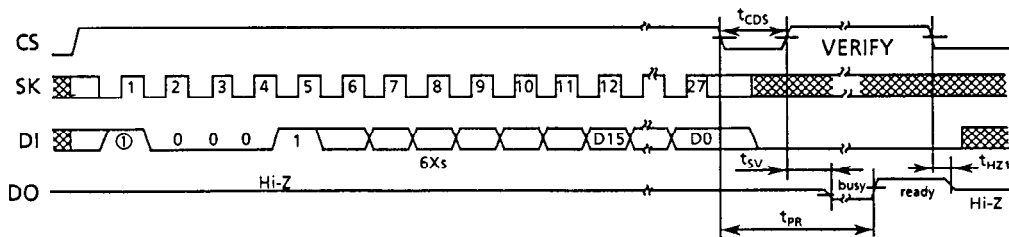


Figure 19 WRAL Timing (S-29330A)

2.4 ERAL

This instruction erases the data in every address.

After changing CS to high, input a start-bit, op-code (ERAL), and address (optional). It is not necessary to input data. Changing CS to low will start the ERAL operation, which changes every bit of data to "1."

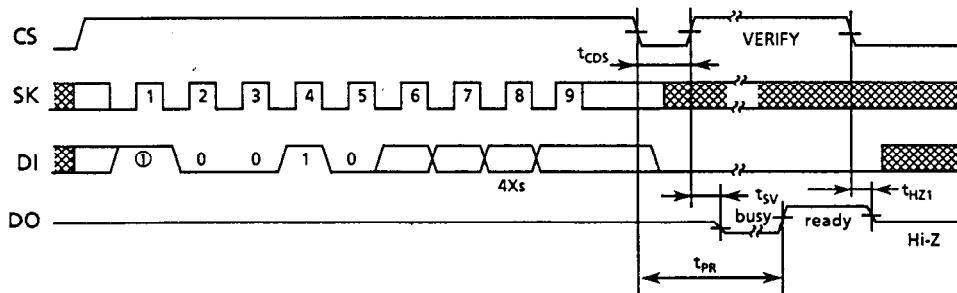


Figure 20 ERAL Timing (S-29130A)

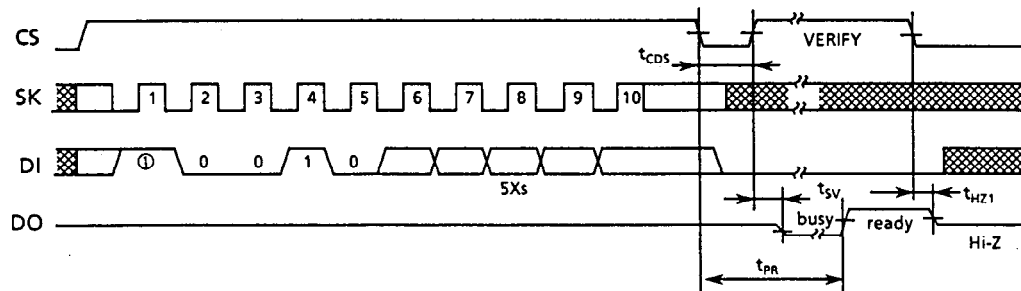


Figure 21 ERAL Timing (S-29230A)

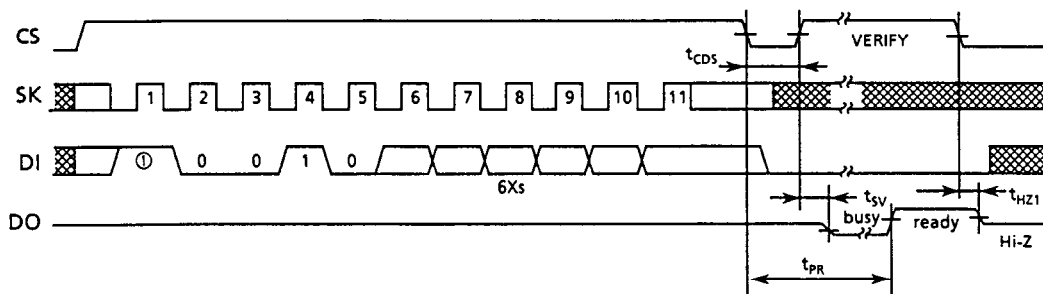


Figure 22 ERAL Timing (S-29220A)

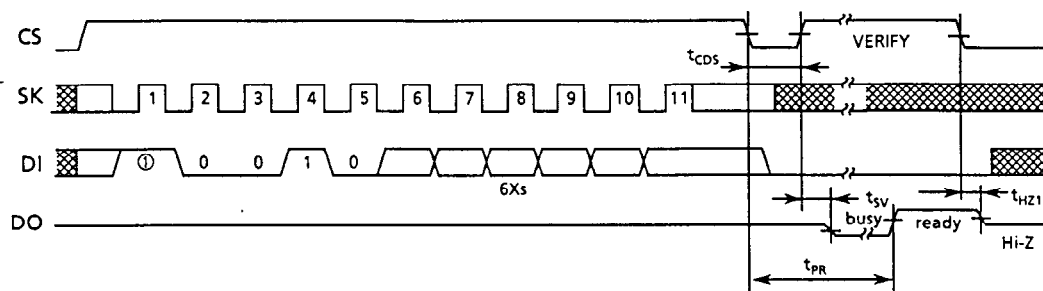


Figure 23 ERAL Timing (S-29330A)

# CMOS SERIAL E<sup>2</sup>PROM

## S-29XX0A Series

### 3. Write enable (EWEN) and Write disable (EWDS)

The EWEN instruction puts the S-29XX0A Series into write enable mode, which accepts WRITE, ERASE, WRAL, and ERAL instructions. The EWDS instruction puts the S-29XX0A Series into write disable mode, which refuses WRITE, ERASE, WRAL, and ERAL instructions.

The S-29XX0A Series powers on in write disable mode, which protects data against unexpected, erroneous write operations caused by noise and/or CPU malfunctions. It should be kept in write disable mode except when performing write operations.

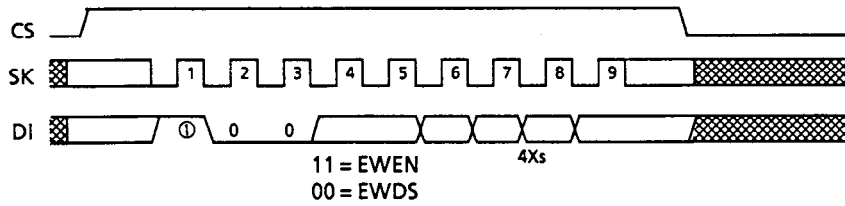


Figure 24 EWEN/EWDS Timing (S-29130A)

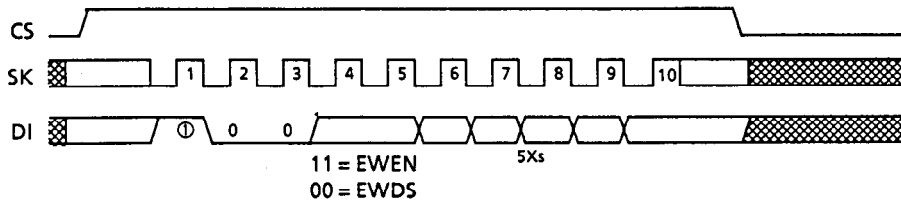


Figure 25 EWEN/EWDS Timing (S-29230A)

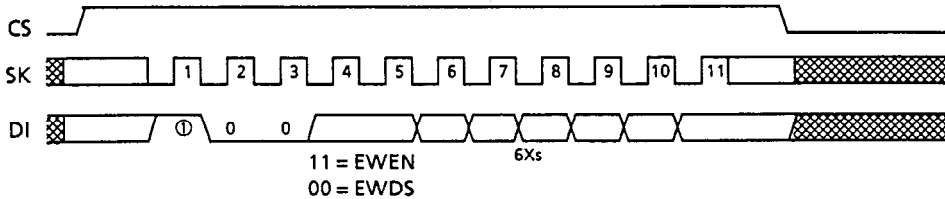


Figure 26 EWEN/EWDS Timing (S-29220A)

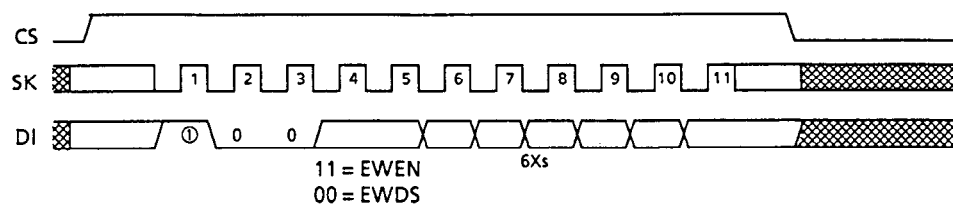


Figure 27 EWEN/EWDS Timing (S-29330A)

■ Receiving a Start-Bit

Both the recognition of a start-bit and the VERIFY procedure occur when CS is "high". Therefore, only after a write operation, in order to accept the next command by having CS go high, will the DO pin switch from a state of high-impedence to a state of data output; but if it recognizes a start-bit, the DO pin returns to a state of high-impedence.

■ Three-wire Interface (DI-DO direct connection)

Although the normal configuration of a serial interface is a 4-wire interface to CS, SK, DI, and DO, a 3-wire interface is also a possibility by connecting DI and DO. However, since there is a possibility that the DO output from the serial memory IC will interfere with the data output from the CPU with a 3-wire interface, install a resistor between DI and DO in order to give preference to data output from the CPU to DI (See Figure 28).

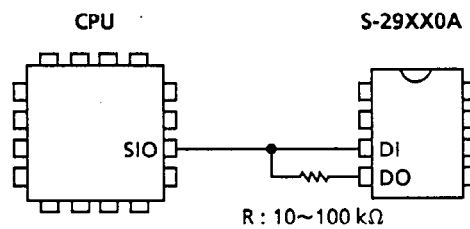


Figure 28

# CMOS SERIAL E<sup>2</sup>PROM S-29XX0A Series

## ■ Dimensions (Unit : mm)

### 1. 8-pin DIP

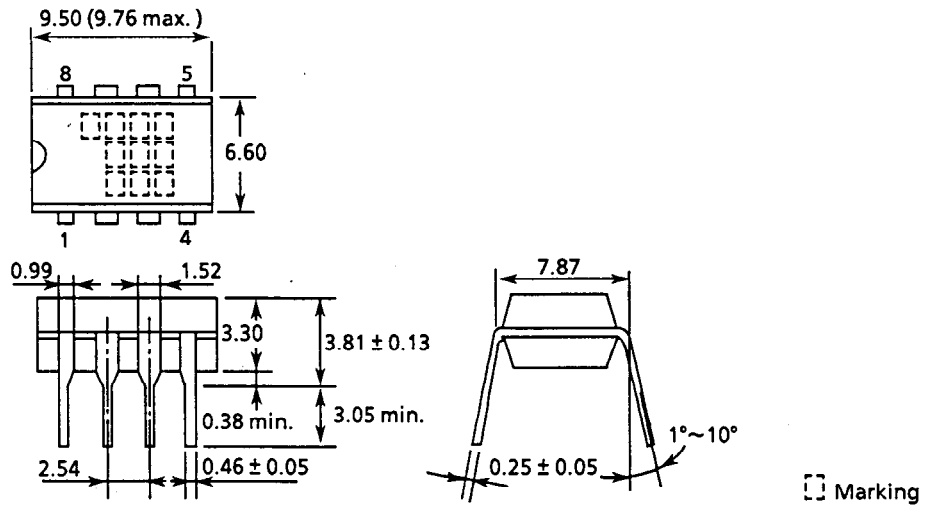


Figure 29

### 2. 8-pin SOP

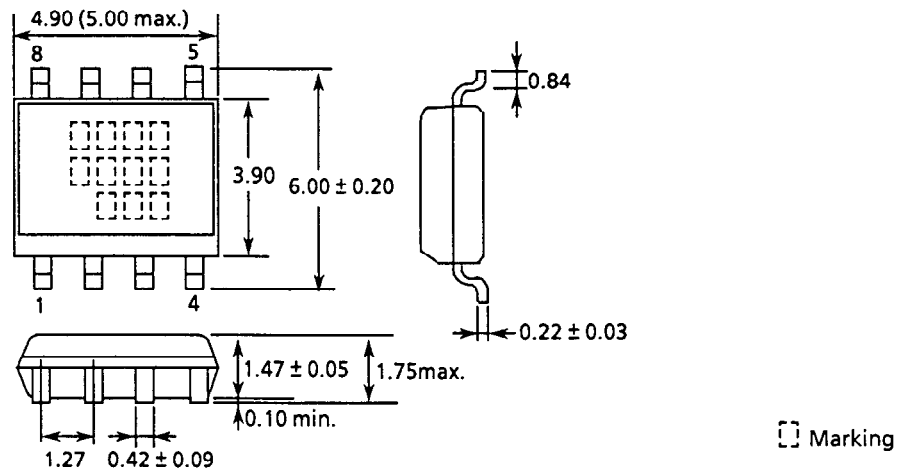


Figure 30

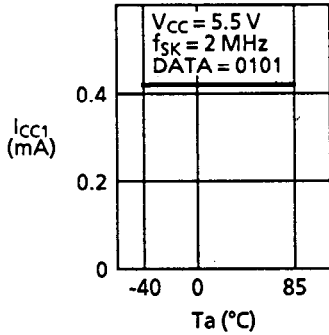
## ■ Ordering Information

S-29XX0A	XXX			
		Package	DP : DIP	(S-29130A, S-29220A, S-29230A, S-29330A)
			FJ : SOP1	(S-29130A, S-29220A, S-29230A, S-29330A)
			DFJ : SOP2	(S-29130A, S-29220A, S-29330A)
		Product name	S-29130A	: 1K-bit
			S-29220A	: 2K-bit
			S-29230A	: 2K-bit
			S-29330A	: 4K-bit

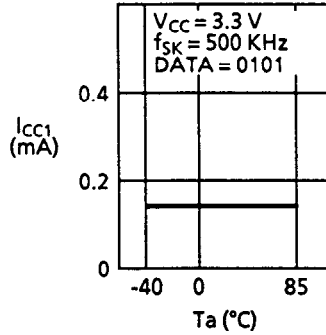
■ Characteristics

1. DC Characteristics

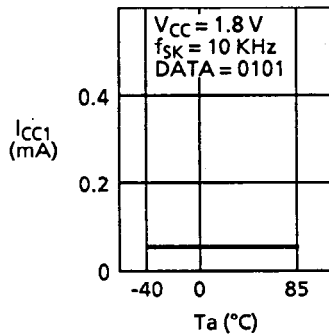
1.1 Current consumption (READ)  $I_{CC1}$  — Ambient temperature  $T_a$



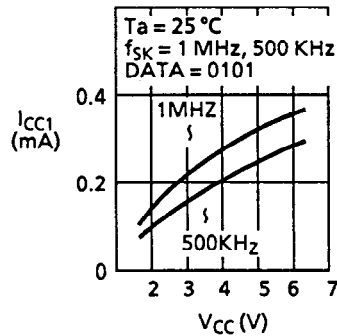
1.2 Current consumption (READ)  $I_{CC1}$  — Ambient temperature  $T_a$



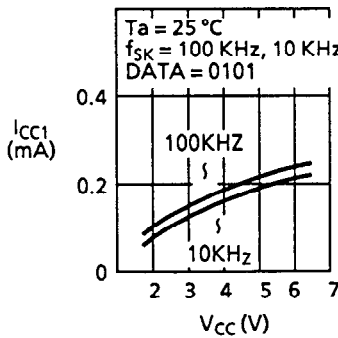
1.3 Current consumption (READ)  $I_{CC1}$  — Ambient temperature  $T_a$



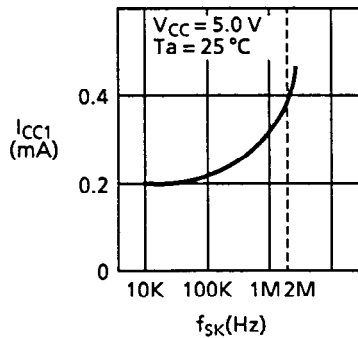
1.4 Current consumption (READ)  $I_{CC1}$  — Power supply voltage  $V_{CC}$



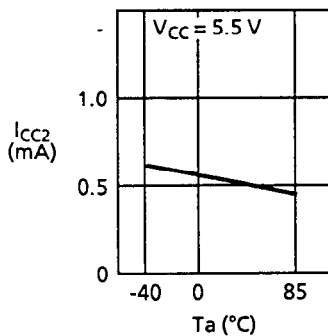
1.5 Current consumption (READ)  $I_{CC1}$  — Power supply voltage  $V_{CC}$



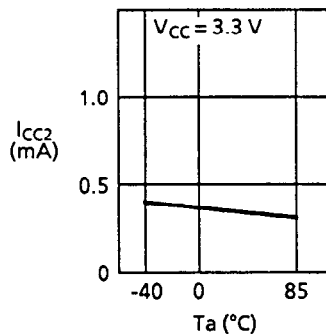
1.6 Current consumption (READ)  $I_{CC1}$  — Clock frequency  $f_{SK}$



1.7 Current consumption (PROGRAM)  $I_{CC2}$  — Ambient temperature  $T_a$



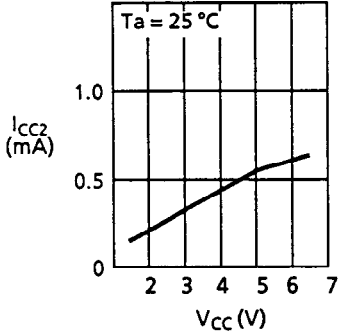
1.8 Current consumption (PROGRAM)  $I_{CC2}$  — Ambient temperature  $T_a$



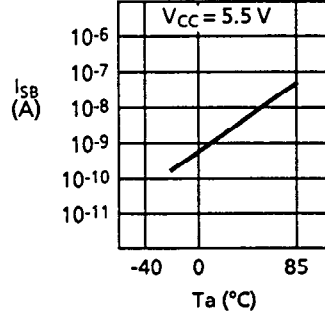


**CMOS SERIAL E<sup>2</sup>PROM**  
**S-29XX0A Series**

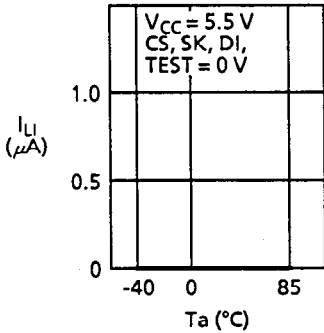
1.9 Current consumption (PROGRAM)  $I_{CC2}$  – Power supply voltage  $V_{CC}$



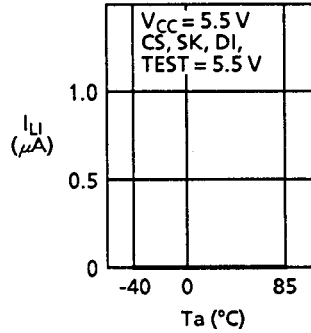
1.10 Standby current consumption  $I_{SB}$  – Ambient temperature  $T_a$



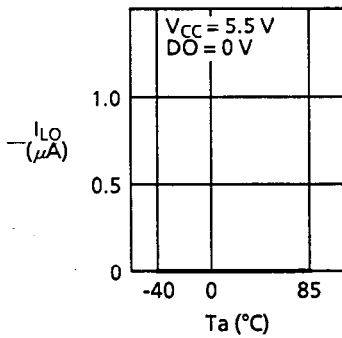
1.11 Input leakage current  $I_{LI}$  – Ambient temperature  $T_a$



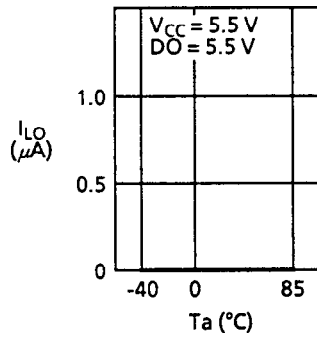
1.12 Input leakage current  $I_{LI}$  – Ambient temperature  $T_a$



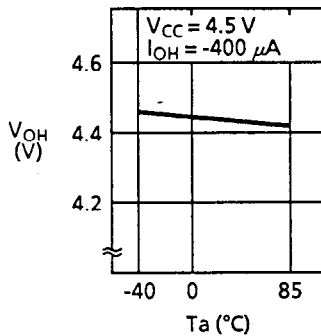
1.13 Output leakage current  $I_{LO}$  – Ambient temperature  $T_a$



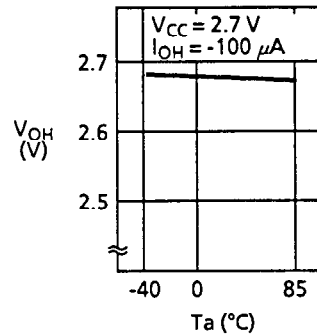
1.14 Output leakage current  $I_{LO}$  – Ambient temperature  $T_a$



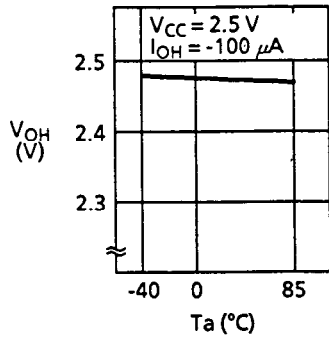
1.15 High level output voltage  $V_{OH}$  – Ambient temperature  $T_a$



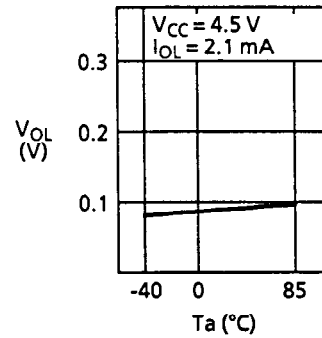
1.16 High level output voltage  $V_{OH}$  – Ambient temperature  $T_a$



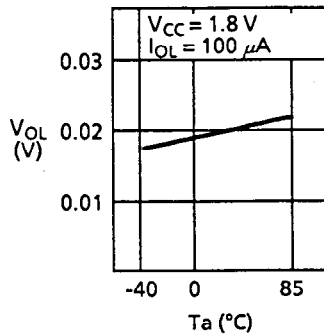
1.17 High level output voltage  $V_{OH}$  – Ambient temperature  $T_a$



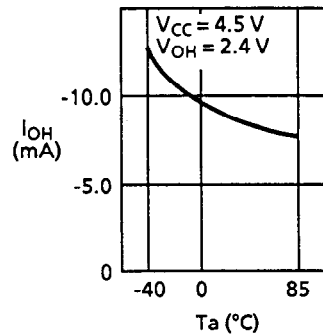
1.18 Low level output voltage  $V_{OL}$  – Ambient temperature  $T_a$



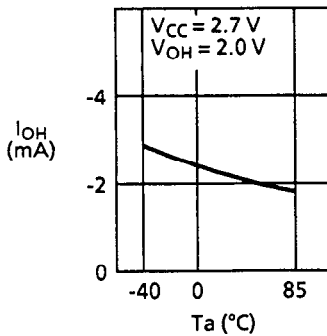
1.19 Low level output voltage  $V_{OL}$  – Ambient temperature  $T_a$



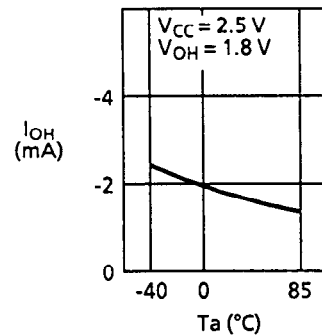
1.20 High level output current  $I_{OH}$  – Ambient temperature  $T_a$



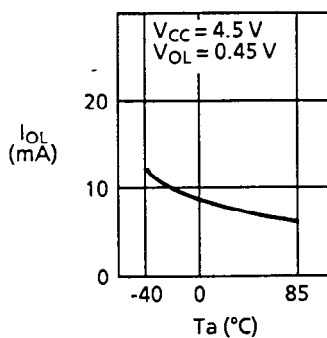
1.21 High level output current  $I_{OH}$  – Ambient temperature  $T_a$



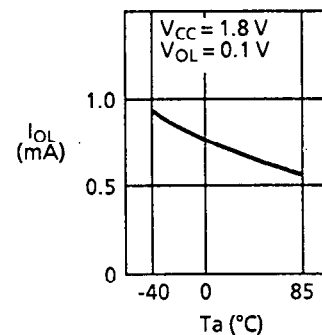
1.22 High level output current  $I_{OH}$  – Ambient temperature  $T_a$



1.23 Low level output current  $I_{OL}$  – Ambient temperature  $T_a$



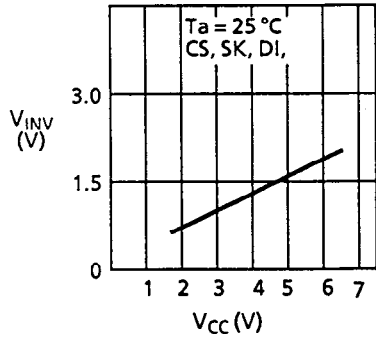
1.24 Low level output current  $I_{OL}$  – Ambient temperature  $T_a$



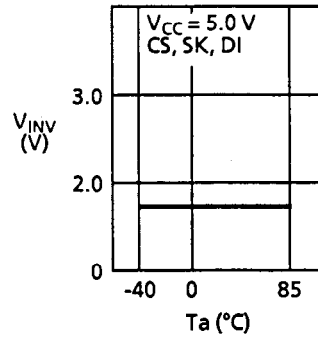
**CMOS SERIAL E<sup>2</sup>PROM**  
**S-29XX0A Series**

---

1.25 Input voltage  $V_{IN}(V_{IL}, V_{IH})$  -  
Power supply voltage  $V_{CC}$

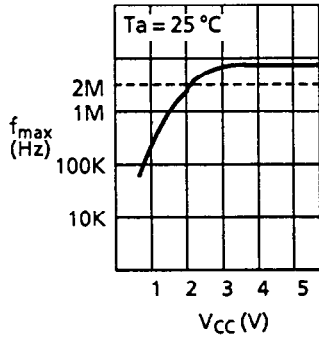


1.26 Input voltage  $V_{IN}(V_{IL}, V_{IH})$  -  
Ambient temperature  $T_a$

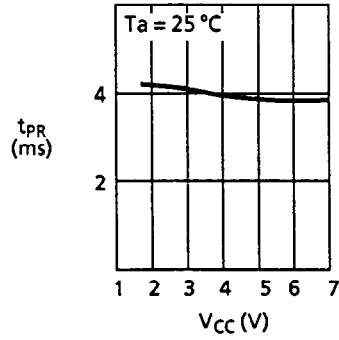


2. AC Characteristics

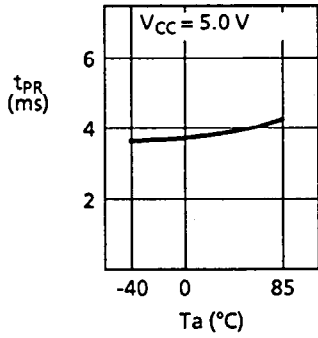
2.1 Maximum operating frequency  $f_{max}$  -  
Power supply voltage  $V_{CC}$



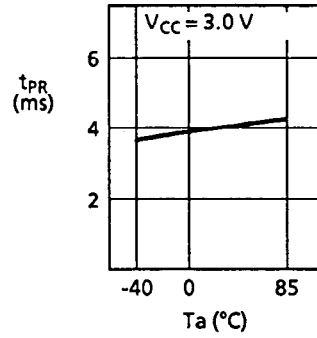
2.2 Program time  $t_{PR}$  -  
Power supply voltage  $V_{CC}$



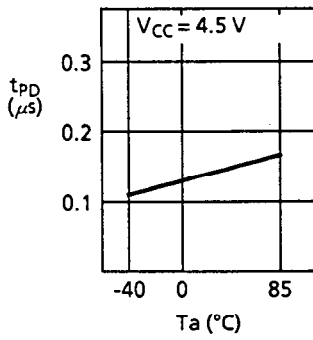
2.3 Program time  $t_{PR}$  -  
Ambient temperature  $T_a$



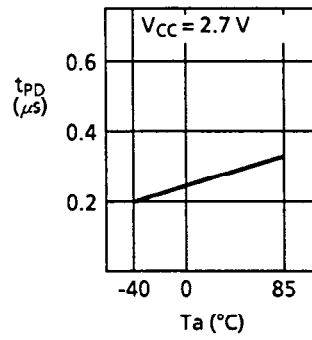
2.4 Program time  $t_{PR}$  -  
Ambient temperature  $T_a$



2.5 Data output delay time  $t_{PD}$  -  
Ambient temperature  $T_a$



2.6 Data output delay time  $t_{PD}$  -  
Ambient temperature  $T_a$



2.7 Data output delay time  $t_{PD}$  -  
Ambient temperature  $T_a$

