

Transistors

# Small switching (30V, 2.0A)

## QS5U13

●Features

- 1) The QS5U13 combines Nch MOSFET with a Schottky barrier diode in a single TSMT5 package.
- 2) Nch MOSFET have a low on-state resistance with a fast switching.
- 3) Nch MOSFET is reacted a low voltage drive (2.5V).
- 4) The Independently connected Schottky barrier diode have a low forward voltage.

●Applications

Load switch, DC / DC conversion

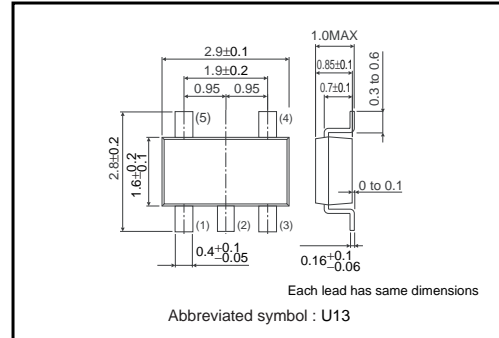
●Structure

Silicon N-channel MOSFET  
Schottky Barrier DIODE

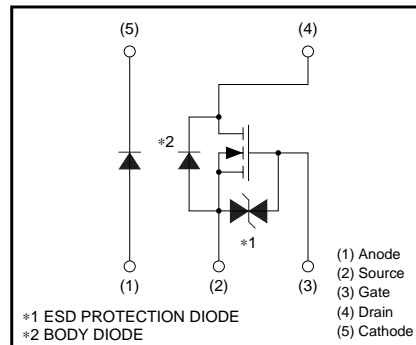
●Packaging specifications

Type	Package	Taping
	Code	TR
	Basic ordering unit (pieces)	3000
QS5U13		○

●External dimensions (Unit : mm)



●Equivalent circuit



Transistors

●Absolute maximum ratings (Ta=25°C)

<MOSFET>

Parameter	Symbol	Limits	Unit
Drain-source voltage	V <sub>DSS</sub>	30	V
Gate-source voltage	V <sub>GSS</sub>	12	V
Drain current	Continuous	I <sub>D</sub>	±2.0 A
	Pulsed	I <sub>DP</sub>	±8.0 A Pw≤10μs, Duty cycle≤1%
Source current (Body diode)	Continuous	I <sub>S</sub>	0.8 A
	Pulsed	I <sub>SP</sub>	3.2 A Pw≤10μs, Duty cycle≤1%
Channel temperature	T <sub>ch</sub>	150	°C

<Di>

Repetitive peak reverse voltage	V <sub>RM</sub>	30	V
Reverse voltage	V <sub>R</sub>	20	V
Forward current	I <sub>F</sub>	0.5	A
Forward current surge peak	I <sub>FSM</sub>	2.0	A 60Hz · 1cyc.
Junction temperature	T <sub>j</sub>	125	°C

<MOSFET AND Di>

Total power dissipation	P <sub>D</sub>	1.0	W / Total / Mounted on a ceramic board
Range of Storage temperature	T <sub>stg</sub>	-50 to 150	°C

●Electrical characteristics (Ta=25°C)

<MOSFET>

Parameter	Symbol	Min.	Typ.	Max.	Unit	Conditions
Gate-source leakage	I <sub>GSS</sub>	-	-	±10	μA	V <sub>GS</sub> =±12V / V <sub>DS</sub> =0V
Drain-source breakdown voltage	V <sub>(BR) DSS</sub>	30	-	-	V	I <sub>D</sub> =1mA, / V <sub>GS</sub> =0V
Zero gate voltage drain current	I <sub>DSS</sub>	-	-	1	μA	V <sub>DS</sub> =30V / V <sub>GS</sub> =0V
Gate threshold voltage	V <sub>GS(th)</sub>	0.5	-	1.5	V	V <sub>DS</sub> =10V / I <sub>D</sub> =1mA
Static drain-source on-state resistance	R <sub>DS(on)</sub> *	-	71	100	mΩ	I <sub>D</sub> =2.0A, V <sub>GS</sub> =4.5V
		-	76	107	mΩ	I <sub>D</sub> =2.0A, V <sub>GS</sub> =4V
		-	110	154	mΩ	I <sub>D</sub> =2.0A, V <sub>GS</sub> =2.5V
Forward transfer admittance	Y <sub>fs</sub>	1.5	-	-	S	V <sub>DS</sub> =10V, I <sub>D</sub> =2.0A
Input capacitance	C <sub>iss</sub>	-	175	-	pF	V <sub>DS</sub> =10V
Output capacitance	C <sub>oss</sub>	-	50	-	pF	V <sub>GS</sub> =0V
Reverse transfer capacitance	C <sub>rss</sub>	-	25	-	pF	f=1MHz
Turn-on delay time	t <sub>d(on)</sub> *	-	8	-	ns	I <sub>D</sub> =1.0A
Rise time	t <sub>r</sub> *	-	10	-	ns	V <sub>DD</sub> ≐15V
Turn-off delay time	t <sub>d(off)</sub> *	-	21	-	ns	V <sub>GS</sub> =4.5V
Fall time	t <sub>f</sub> *	-	8	-	ns	R <sub>L</sub> =15Ω
Total gate charge	Q <sub>g</sub>	-	2.8	3.9	nC	R <sub>GS</sub> =10Ω
Gate-source charge	Q <sub>gs</sub>	-	0.6	-	nC	V <sub>DD</sub> ≐15V
Gate-drain charge	Q <sub>gd</sub>	-	0.8	-	nC	V <sub>GS</sub> =4.5V
						I <sub>D</sub> =2.0A

\*Pulsed

<MOSFET>Body diode (source-drain)

Forward voltage	V <sub>SD</sub>	-	-	1.2	V	I <sub>S</sub> =3.2A / V <sub>GS</sub> =0V
-----------------	-----------------	---	---	-----	---	--

<Di>

Forward voltage	V <sub>F</sub>	-	-	0.47	V	I <sub>F</sub> =0.5A
Reverse leakage	I <sub>R</sub>	-	-	100	μA	V <sub>R</sub> =20V

Transistors

●Electrical characteristic curves

<MOSFET>

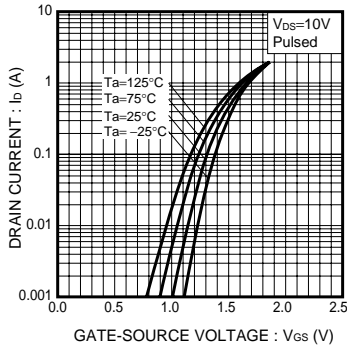


Fig.1 Typical Transfer Characteristics

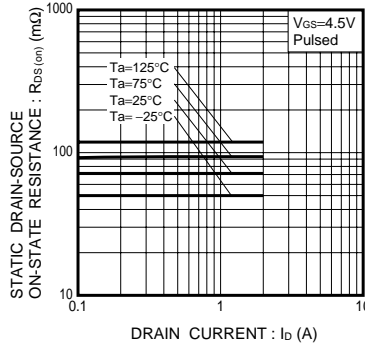


Fig.2 Static Drain-Source On-State Resistance vs. Drain Current

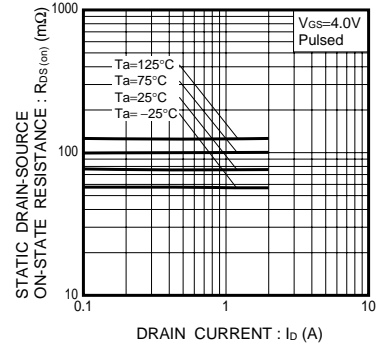


Fig.3 Static Drain-Source On-State Resistance vs. Drain Current

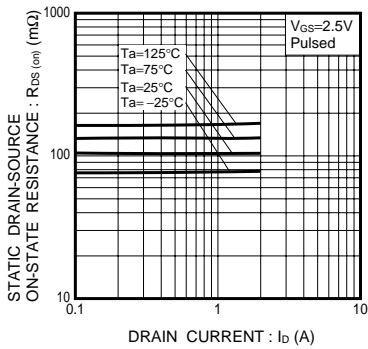


Fig.4 Static Drain-Source On-State Resistance vs. Drain Current

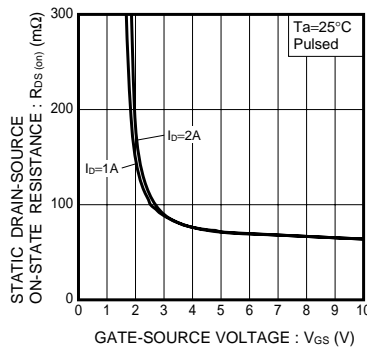


Fig.5 Static Drain-Source On-State Resistance vs. Gate-Source Voltage

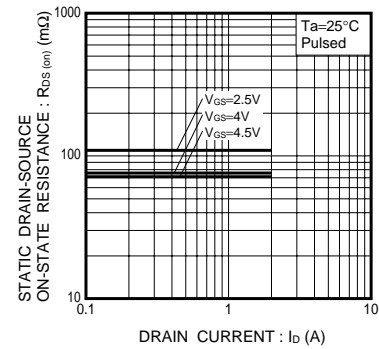


Fig.6 Static Drain-Source On-State Resistance vs. Drain Current

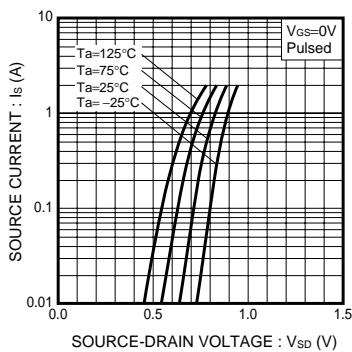


Fig.7 Reverse Drain Current vs. Source-Drain Current

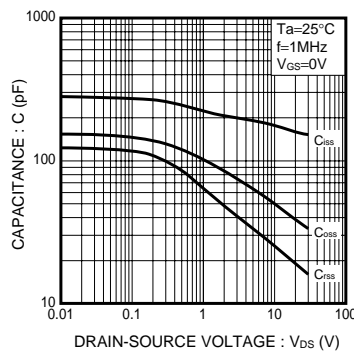


Fig.8 Typical Capacitance vs. Drain-Source Voltage

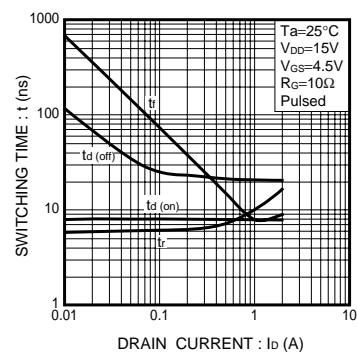


Fig.9 Switching Characteristics

Transistors

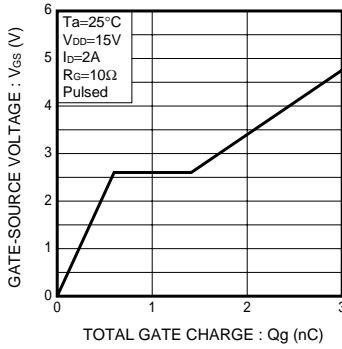


Fig.10 Dynamic Input Characteristics

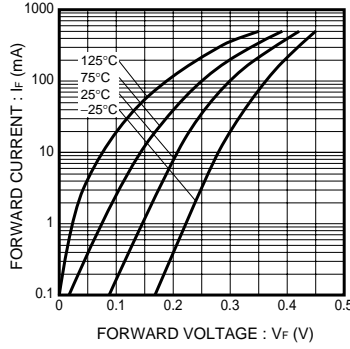


Fig.11 Forward Current vs. Forward Voltage

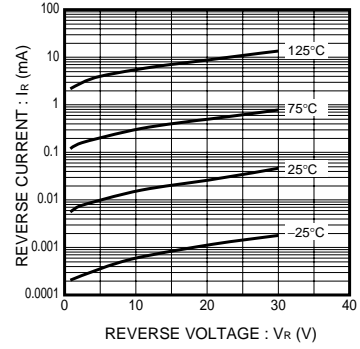


Fig.12 Reverse Current vs. Reverse Voltage

●Measurement circuits

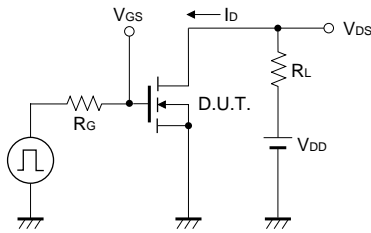


Fig.13 Switching Time Measurement Circuit

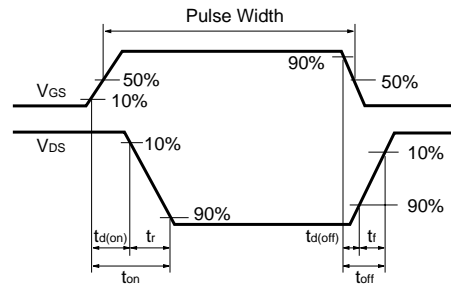


Fig.14 Switching Waveforms

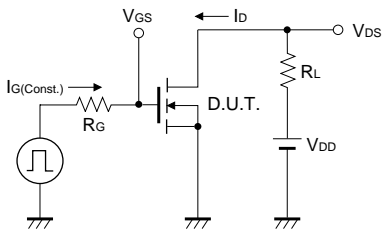


Fig.15 Gate Charge Measurement Circuit

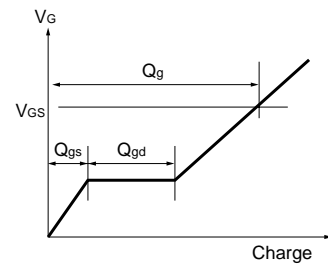


Fig.16 Gate Charge Waveform

### Notes

- No technical content pages of this document may be reproduced in any form or transmitted by any means without prior permission of ROHM CO.,LTD.
- The contents described herein are subject to change without notice. The specifications for the product described in this document are for reference only. Upon actual use, therefore, please request that specifications to be separately delivered.
- Application circuit diagrams and circuit constants contained herein are shown as examples of standard use and operation. Please pay careful attention to the peripheral conditions when designing circuits and deciding upon circuit constants in the set.
- Any data, including, but not limited to application circuit diagrams information, described herein are intended only as illustrations of such devices and not as the specifications for such devices. ROHM CO.,LTD. disclaims any warranty that any use of such devices shall be free from infringement of any third party's intellectual property rights or other proprietary rights, and further, assumes no liability of whatsoever nature in the event of any such infringement, or arising from or connected with or related to the use of such devices.
- Upon the sale of any such devices, other than for buyer's right to use such devices itself, resell or otherwise dispose of the same, no express or implied right or license to practice or commercially exploit any intellectual property rights or other proprietary rights owned or controlled by
- ROHM CO., LTD. is granted to any such buyer.
- Products listed in this document use silicon as a basic material.  
Products listed in this document are no antiradiation design.

The products listed in this document are designed to be used with ordinary electronic equipment or devices (such as audio visual equipment, office-automation equipment, communications devices, electrical appliances and electronic toys).

Should you intend to use these products with equipment or devices which require an extremely high level of reliability and the malfunction of which would directly endanger human life (such as medical instruments, transportation equipment, aerospace machinery, nuclear-reactor controllers, fuel controllers and other safety devices), please be sure to consult with our sales representative in advance.

#### About Export Control Order in Japan

Products described herein are the objects of controlled goods in Annex 1 (Item 16) of Export Trade Control Order in Japan.

In case of export from Japan, please confirm if it applies to "objective" criteria or an "informed" (by MITI clause) on the basis of "catch all controls for Non-Proliferation of Weapons of Mass Destruction.

Copyright © Each Manufacturing Company.

All Datasheets cannot be modified without permission.

This datasheet has been download from :

[www.AllDataSheet.com](http://www.AllDataSheet.com)

100% Free DataSheet Search Site.

Free Download.

No Register.

Fast Search System.

[www.AllDataSheet.com](http://www.AllDataSheet.com)