

DOCUMENT NUMBER NCD-5DC2-01

# SAA-1 Series

## Single-Mode FC ADAPTOR

### TECHNICAL SPECIFICATIONS

**Seiko Instruments Inc.**

Components Sales Dept.

8, Nakase 1-Chome

Mihama-ku, Chiba-shi, Chiba-ken

261 JAPAN

Telephone : 043-211-1214

-1215

Facsimile : 043-211-8035



# SAA-1 Series Single-Mode FC ADAPTOR TECHNICAL SPECIFICATIONS

Document Number NCD-5DC2-01

NAE63D01 " SAA-1 Part "	May 1986
NAE63D02 " SAA-1 Part "	September 1986
SSA930305	March 1993
39055-2016-01	September 1993
NCD-5DC2-01	December 1995

Copyright 1986, 1993, 1995 by **Seiko Instruments Inc.**  
All right reserved.

The information contained herein shall not reproduced or disclosed to any third party without the express written consent of **SII**.

The Specifications contained herein are subject to change without notice.

**SII** is a trademark of **Seiko Instruments Inc.**

Please address any questions, comments, and suggestions to:

## **Seiko Instruments USA Inc.**

Electronics Components Division  
2990 West Lomita Boulevard  
Torrance, CA 90505, U.S.A.  
Phone: 310-517-7780  
Fax: 310-517-7792

## **Seiko Instruments (H.K.) Ltd.**

Sales Department  
4th & 5th Floor, Wyler Center 2  
200 Tai Lin Pai Road, Kwai Chung  
N.T., Kowloon, Hong Kong  
Phone: 852-2421-8611  
Fax: 852-2480-5479

## **Seiko Instruments Singapore pte. Ltd.**

2, Marsiling Lane,  
Woodlands New Town,  
Singapore, 2573, Singapore  
Phone: 65-2691370  
Fax: 65-2699729

## **Seiko Instruments GmbH**

OFC Division  
Siemensstraße 9b  
D-63263 Neu-Isenburg, Germany  
Phone: 06102-297-0  
Fax: 06102-297-211

## **Seiko Instruments Taiwan Inc.**

Sales Department  
5F-1, No.99, Sec. 2, Chung Shan  
Rd.  
Taipei 104, Taiwan, R.O.C.  
Phone: 02-563-5001, 523-5111  
Fax: 02-521-9519

## TABLE OF CONTENTS

Section	Page
1. PROVISION	1
1.1 Application Limit	1
2. PARTS NUMBER	1
3. GENERAL SPECIFICATIONS	2
3.1 Parts and Materials	2
3.2 Physical Dimensions	2
3.3 General Tolerances	2
3.4 Insertion Loss	3
4. PACKING	3
5. SHIPPING INSPECTION	3

### Table

Table 1	Parts Number	1
Table 2	Parts and Materials	2
Table 3	General Tolerance	2
Table 4	Insertion Loss and the Measurement Conditions	3

### Figure

Figure 1	Insertion Loss Measurement System	3
Figure 2	SAA-1 Adaptor	4
Figure 3 to 4	Part Dimensions	5



## 1. PROVISION

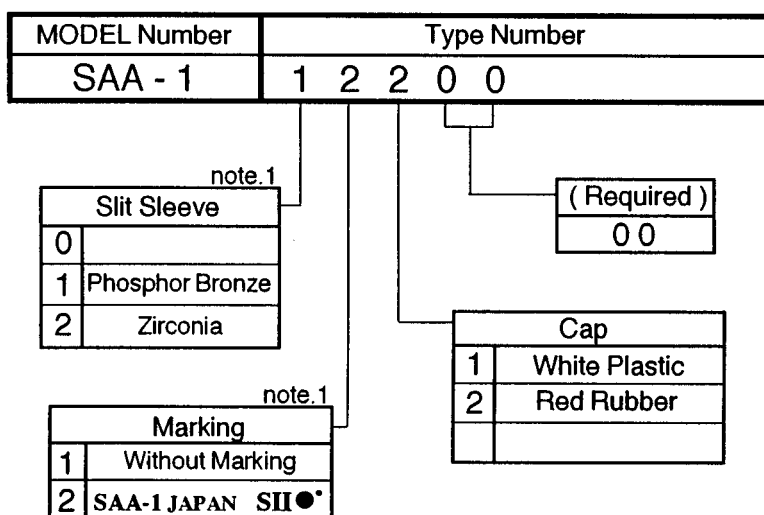
### 1.1 Application Limit

These specifications apply to the SAA-1 Single-Mode FC ADAPTOR supplied by **SII**.

## 2. PARTS NUMBER

Parts Number of the Adaptor is Shown in Table 1.

Table 1 Parts Number



note.1 : Marking and Slite Sleeve type

Slit Sleeve type	Marking (Standard)
Phosphor Bronze	Both type (with / without)
Zirconia	With Marking type

### 3. GENERAL SPECIFICATIONS

#### 3.1 Parts and Materials

Parts and the materials are shown in Table 2.

Table 2 Parts and materials

No.	Part Name	Q'ty	Material	Notes
①	Housing A	1	Brass	Nickel Plating
②	Fitting Sleeve	2	Brass	Nickel Plating
③-1	Slit Sleeve	1	Phosphor Bronze	--
③-2			Zirconia Ceramics	
④	Spacer	1	Brass	Nickel Plating
⑤	Housing B	1	Brass	Nickel Plating
⑥	Screw	2	Brass	Nickel Plating
⑦-1	Cap	2	Plastic	White
⑦-2			Synthetic Rubber	Red

#### 3.2 Physical Dimensions

Figure 2 shows the SAA-1.

Figure 3 to 4 show the part dimension.

- In accordance with JIS C5970 F01 type connectors

#### 3.3 General Tolerances

Permissible deviation in dimensions without tolerance indication is in accordance with JIS B 0405 class m, as shown in Table 3.

Table 3 General tolerance (JIS B 0405 class m)

Basic size step (mm)		Permissible deviation (mm)
Over	Under	
0.5	3	$\pm 0.1$
3	6	$\pm 0.1$
6	30	$\pm 0.2$
30	120	$\pm 0.3$

### 3.4 Insertion Loss

Insertion Loss of the adaptor and the measurement conditions shown in Table 4.  
Figure 1 shows the measurement system.

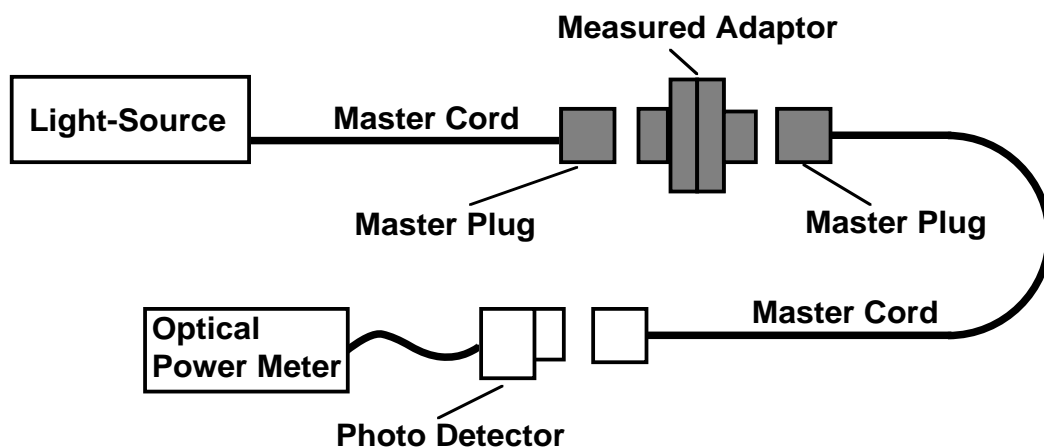


Figure 1 Insertion loss measurement system

Table 4 Insertion loss and the measurement conditions

Parts Number		SAA-1 1□□00 ( Slit Sleeve : Phosphor Bronze )	SAA-1 2□□00 ( Slit Sleeve : Zirconia Ceramics )
Insertion Loss		0.7dB or Less	0.4dB or Less
Conditions	Light-Source	LD or LED	LD
	Wavelength	1.3 $\mu\text{m}$	1.3 $\mu\text{m}$
	Master Cord Terminated	Flat Polishing with Buffing	PC Polishing

### 4. PACKING

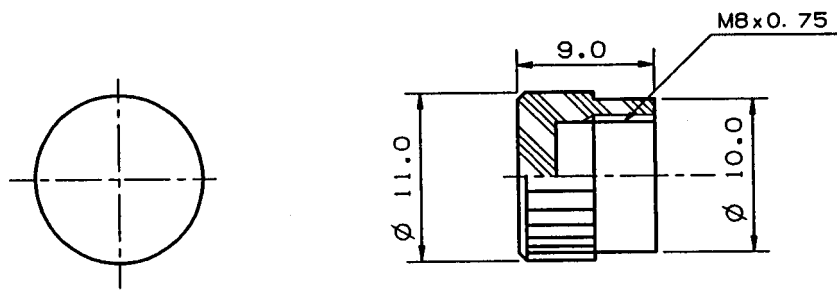
The product is packed to prevent damage during shipment.

### 5. SHIPPING INSPECTION

The insertion loss inspected before shipping.

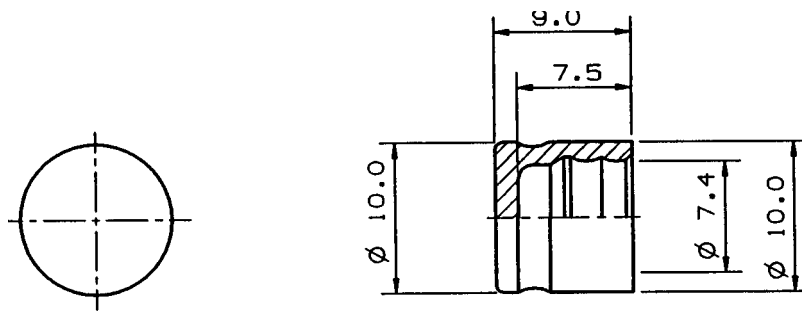






Unit : mm

Figure 3 ⑦-1 Cap



Unit : mm

Figure 4 ⑦-2 Cap