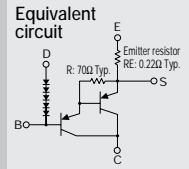


Built-in temperature compensation diodes  
Built-in emitter resistor  
Darlington

# SAP09P



(Complement to type SAP09N)

Application: Audio

■ Absolute maximum ratings (Ta=25°C)

Symbol	Ratings	Unit
VCBO	150	V
VCEO	-150	V
VEBO	-5	V
IC	-10	A
IB	-1	A
PC	80 (Tc=25°C)	W
Di If	10	mA
Tj	150	°C
Tstg	-40 to +150	°C

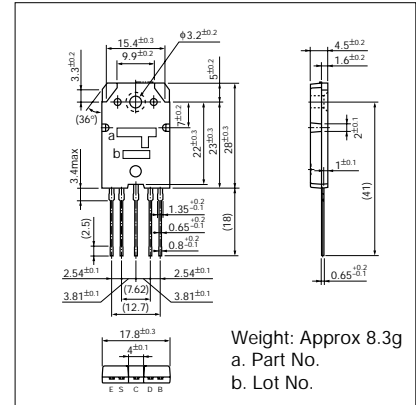
■ Electrical Characteristics (Ta=25°C)

Symbol	Conditions	Ratings			Unit
		min	typ	max	
ICBO	VCE = -150V			-100	μA
IEBO	VEB = -5V			-100	μA
VCEO	IC = -30mA	-150			V
hFE*	VCE = -4V, IC = -6A	5000		20000	
VCE(sat)	IC = -6A, IB = -6mA			-2.0	V
VBE(sat)	IC = -6A, IB = -6mA			-2.5	V
VBE	VCE = -20V, IC = -40mA		1230		mV
Di Vf	If = 2.5mA		1580		mV
RE	IE = 1A	0.176	0.22	0.264	Ω

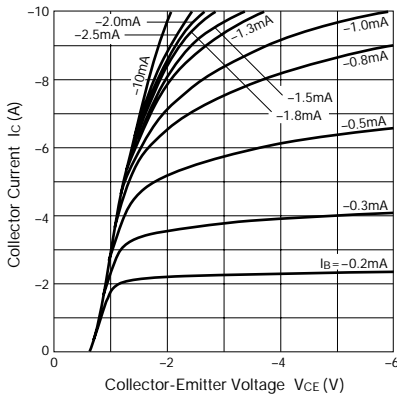
\*hFE Rank  $\bar{O}$  (5000 to 12000), Y (8000 to 20000)

External Dimensions

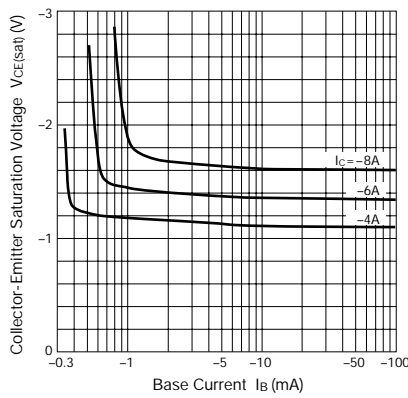
(Unit: mm)



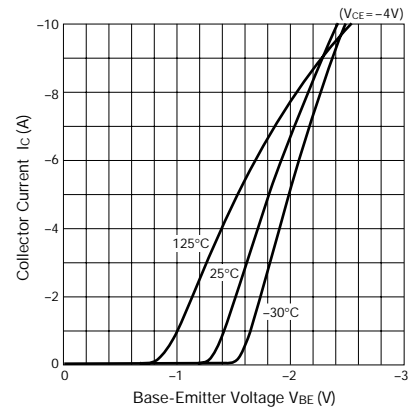
IC - VCE Characteristics (Typical)



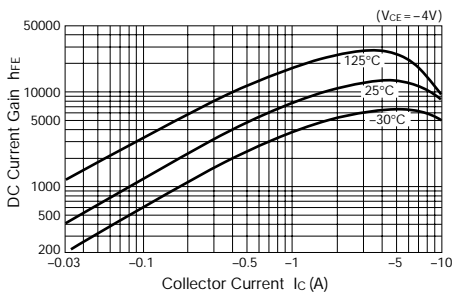
VCE(sat) - IB Characteristics (Typical)



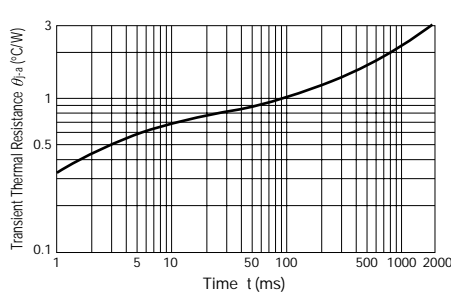
IC - VBE Temperature Characteristics (Typical)



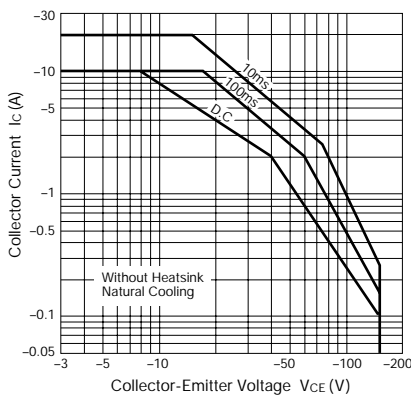
hFE - IC Characteristics (Typical)



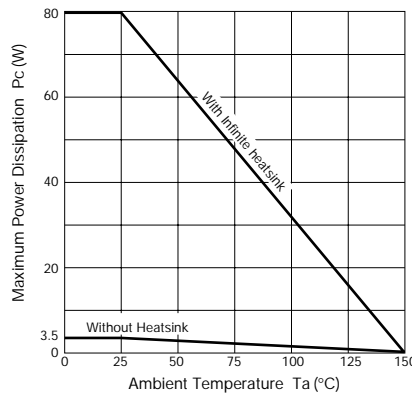
θja - t Characteristics



Safe Operating Area (Single Pulse)



PC - Ta Derating



Copyright © Each Manufacturing Company.

All Datasheets cannot be modified without permission.

This datasheet has been download from :

[www.AllDataSheet.com](http://www.AllDataSheet.com)

100% Free DataSheet Search Site.

Free Download.

No Register.

Fast Search System.

[www.AllDataSheet.com](http://www.AllDataSheet.com)