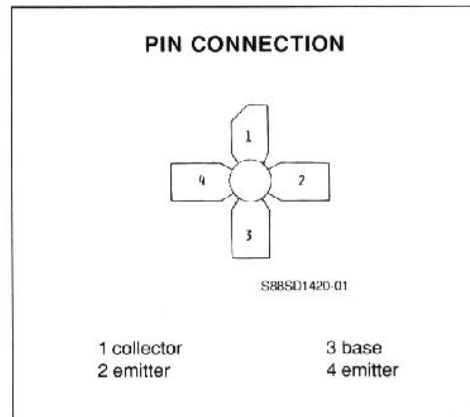
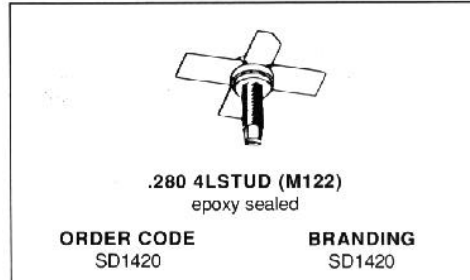


**RF & MICROWAVE TRANSISTORS**  
**860-960MHz CLASS AB BASE STATION**

- FREQUENCY 860 - 960MHz
- POWER OUT 2.1W
- VOLTAGE 24V
- POWER GAIN 9.0dB
- CLASS AB
- DESIGNED FOR LINEAR OPERATION
- GOLD METALLIZATION FOR HIGH RELIABILITY
- COMMON EMITTER CONFIGURATION



**DESCRIPTION**

The SD1420 is a gold metallized epitaxial silicon NPN Planar Transistor designed for high linearity Class AB operation for Cellular Base Station applications. The SD1420 was developed as a driver for the SD1423. The SD1420 is available in a studless package as the SD1420-01.

**ABSOLUTE MAXIMUM RATINGS** ( $T_{case} = 25^{\circ}C$ )

Symbol	Parameter	Value	Unit
$V_{CBO}$	Collector - Base Voltage	40.0	V
$V_{CEO}$	Collector - Emitter Voltage	28.0	V
$V_{EBO}$	Emitter - Base Voltage	3.5	V
$I_C$	Collector Current (max.)	.250	A
$P_{TOT}$	Total Device Dissipation at + 25°C	7.0	W
$T_{STG}$	Storage Temperature	- 55 to + 150	°C
$T_J$	Junction Temperature	+ 200	°C

**THERMAL DATA**

$R_{th(J-C)}$	Junction-case Thermal Resistance	20.0	°C/W
---------------	----------------------------------	------	------

**SD1420****ELECTRICAL CHARACTERISTICS** ( $T_{\text{case}} = 25^{\circ}\text{C}$ )

## STATIC

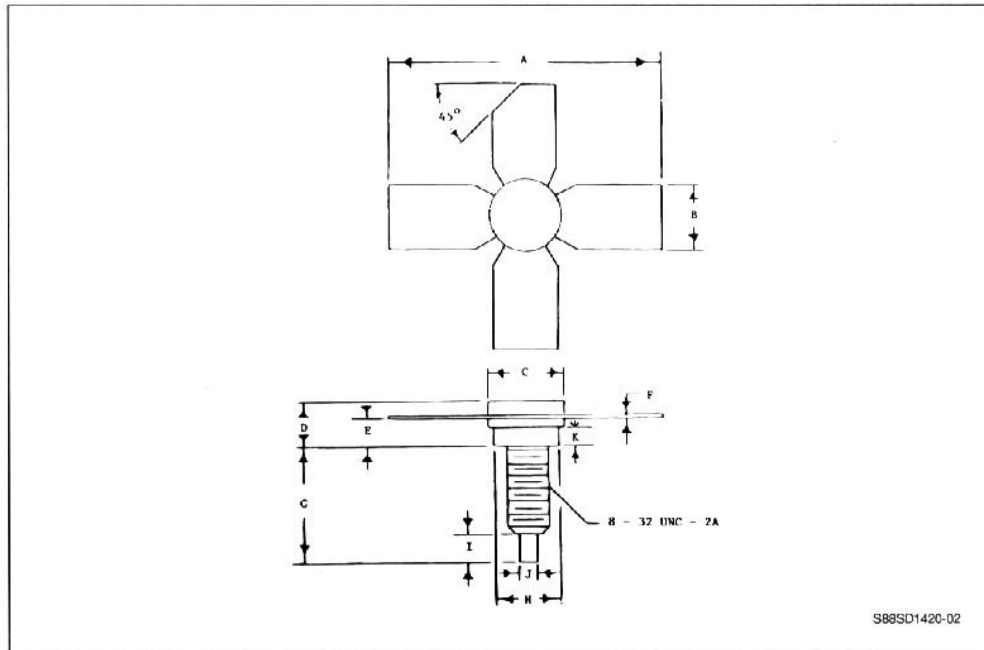
Symbol	Test Conditions	Value			Unit
		Min.	Typ.	Max.	
$BV_{\text{CEO}}$	$I_{\text{C}} = 1\text{mA}$	28	30		V
$BV_{\text{CBO}}$	$I_{\text{C}} = 1\text{mA}$	40.0			V
$BV_{\text{EBO}}$	$I_{\text{E}} = .25\text{mA}$	3.5			V
$I_{\text{CEO}}$	$V_{\text{CB}} = 24.0\text{V}$			.5	mA
$h_{\text{FE}}$	$V_{\text{C}} = 5.0\text{V}$ $I_{\text{C}} = .1\text{A}$	20		120	

## DYNAMIC

Symbol	Test Conditions	Value			Unit
		Min.	Typ.	Max.	
$P_{\text{O}}$	$f = 960\text{MHz}$ $V_{\text{CE}} = 24\text{V}$ $I_{\text{CC}} = .2\text{A}$	2.1			W
$P_{\text{G}}$	$f = 960\text{MHz}$ $V_{\text{CE}} = 24\text{V}$	8.9	9.0		dB
$C_{\text{ob}}$	$f = 1\text{MHz}$ $V_{\text{CB}} = 28.0\text{V}$			5.0	$\mu\text{F}$

## PACKAGE MECHANICAL DATA

.280 4LSTUD



	Minimum Inches	Maximum Inches
A		1.055
B	.220	.230
C	.275	.285
D	.178	.192
E	.110	.125
F	.004	.006

	Minimum Inches	Maximum Inches
G	.445	.465
H	.245	.255
I	.120	.140
J	.055	.065
K	.055	.065

Copyright © Each Manufacturing Company.

All Datasheets cannot be modified without permission.

This datasheet has been download from :

[www.AllDataSheet.com](http://www.AllDataSheet.com)

100% Free DataSheet Search Site.

Free Download.

No Register.

Fast Search System.

[www.AllDataSheet.com](http://www.AllDataSheet.com)