



N-Channel 30-V (D-S) MOSFET

CHARACTERISTICS

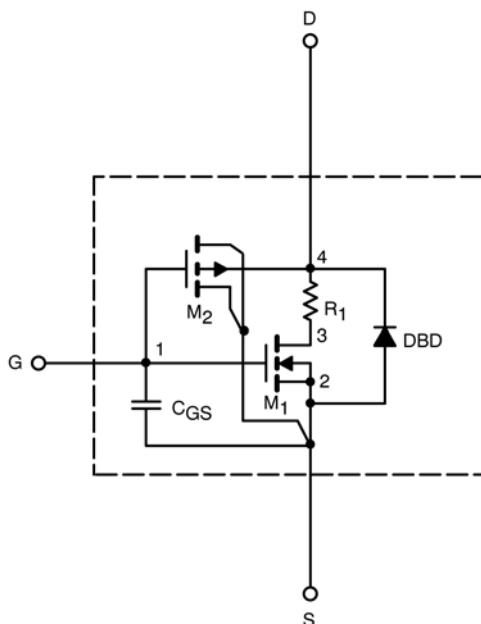
- N-Channel Vertical DMOS
- Macro Model (Subcircuit Model)
- Level 3 MOS
- Apply for both Linear and Switching Application
- Accurate over the -55 to 125°C Temperature Range
- Model the Gate Charge, Transient, and Diode Reverse Recovery Characteristics

DESCRIPTION

The attached spice model describes the typical electrical characteristics of the n-channel vertical DMOS. The subcircuit model is extracted and optimized over the -55 to 125°C temperature ranges under the pulsed 0 to 10V gate drive. The saturated output impedance is best fit at the gate bias near the threshold voltage.

A novel gate-to-drain feedback capacitance network is used to model the gate charge characteristics while avoiding convergence difficulties of the switched C_{gd} model. All model parameter values are optimized to provide a best fit to the measured electrical data and are not intended as an exact physical interpretation of the device.

SUBCIRCUIT MODEL SCHEMATIC



This document is intended as a SPICE modeling guideline and does not constitute a commercial product data sheet. Designers should refer to the appropriate data sheet of the same number for guaranteed specification limits.



SPECIFICATIONS ($T_J = 25^\circ\text{C}$ UNLESS OTHERWISE NOTED)					
Parameter	Symbol	Test Conditions	Simulated Data	Measured Data	Unit
Static					
Gate Threshold Voltage	$V_{GS(th)}$	$V_{DS} = V_{GS}$, $I_D = 250\ \mu\text{A}$	0.81		V
On-State Drain Current ^a	$I_{D(on)}$	$V_{DS} \geq 5\ \text{V}$, $V_{GS} = 10\ \text{V}$	1652		A
Drain-Source On-State Resistance ^a	$r_{DS(on)}$	$V_{GS} = 10\ \text{V}$, $I_D = 29\ \text{A}$	0.0028	0.0027	Ω
		$V_{GS} = 4.5\ \text{V}$, $I_D = 25\ \text{A}$	0.0032	0.0032	
Forward Transconductance ^a	g_{fs}	$V_{DS} = 6\ \text{V}$, $I_D = 29\ \text{A}$	110	110	S
Diode Forward Voltage ^a	V_{SD}	$I_S = 4.5\ \text{A}$, $V_{GS} = 0\ \text{V}$	0.75	0.68	V
Dynamic^b					
Total Gate Charge	Q_g	$V_{DS} = 15\ \text{V}$, $V_{GS} = 4.5\ \text{V}$, $I_D = 29\ \text{A}$	54	46	nC
Gate-Source Charge	Q_{gs}		11.5	11.5	
Gate-Drain Charge	Q_{gd}		11.5	11.5	
Turn-On Delay Time	$t_{d(on)}$	$V_{DD} = 15\ \text{V}$, $R_L = 15\ \Omega$ $I_D \cong 1\ \text{A}$, $V_{GEN} = 4.5\ \text{V}$, $R_G = 6\ \Omega$	32	20	Ns
Rise Time	t_r		19	15	
Turn-Off Delay Time	$t_{d(off)}$		185	220	
Fall Time	t_f		61	85	
Source-Drain Reverse Recovery Time	t_{rr}	$I_F = 2.9\ \text{A}$, $di/dt = 100\ \text{A}/\mu\text{s}$	29	55	

Notes

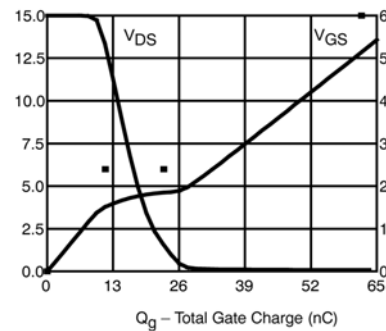
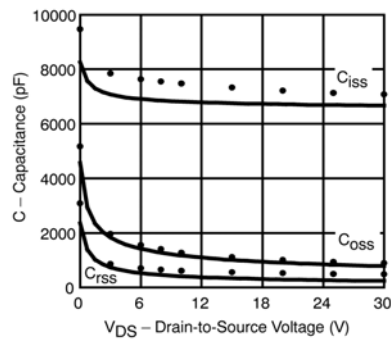
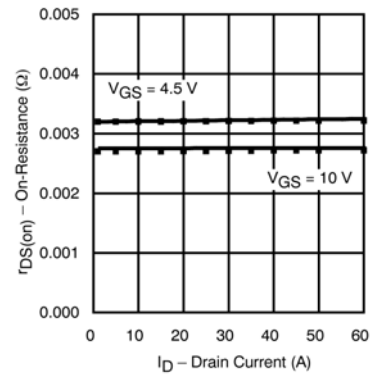
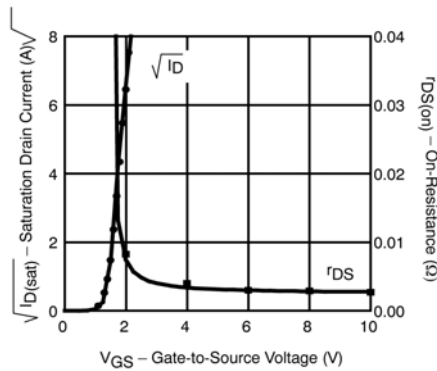
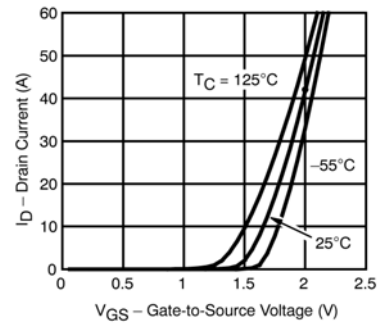
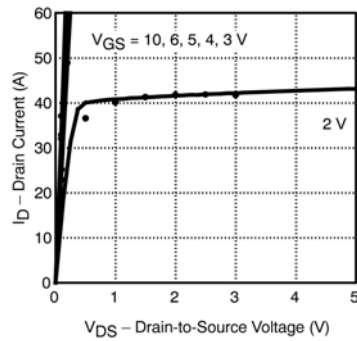
- a. Pulse test; pulse width $\leq 300\ \mu\text{s}$, duty cycle $\leq 2\%$.
b. Guaranteed by design, not subject to production testing.



SPICE Device Model Si7380DP

Vishay Siliconix

COMPARISON OF MODEL WITH MEASURED DATA ($T_J=25^\circ\text{C}$ UNLESS OTHERWISE NOTED)



Note: Dots and squares represent measured data.

Copyright © Each Manufacturing Company.

All Datasheets cannot be modified without permission.

This datasheet has been download from :

www.AllDataSheet.com

100% Free DataSheet Search Site.

Free Download.

No Register.

Fast Search System.

www.AllDataSheet.com