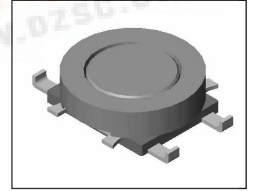


SMT Power Inductor

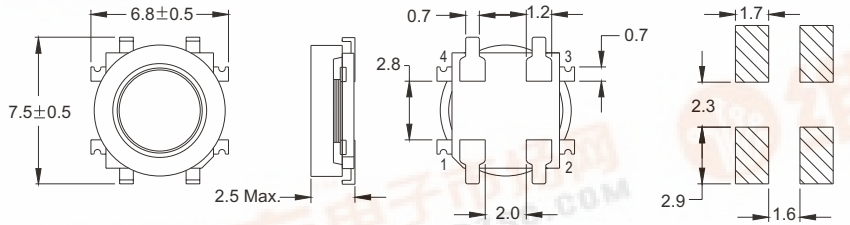
SIC73 Type

Features

- Low profile (2.5mm max. height) SMD type.
- Magnetically shielded, suitable for high density mounting.
- High energy storage and low DCR.
- Provided with embossed carrier tape packing.
- Ideal for power source circuits, DC-DC converter, DC-AC inverters inductor application.
- In addition to the standard versions shown here, custom inductors are available to meet your exact requirements.

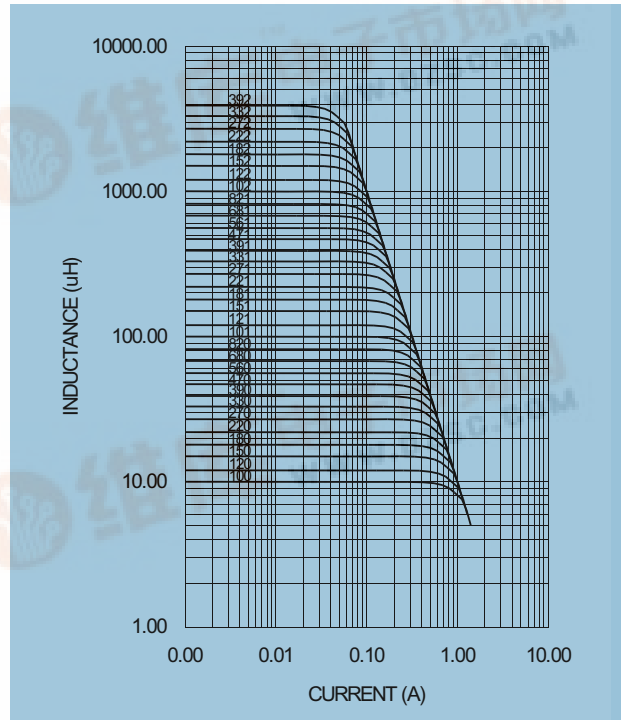


Mechanical Dimension: Unit: mm



Electrical Characteristics:

PART NO.	L★ (uH)	DCR (Ω) MAX	I _{RATED} ★★ (A dc)
SIC73-100	10	0.200	0.700
SIC73-120	12	0.220	0.616
SIC73-150	15	0.291	0.572
SIC73-180	18	0.307	0.524
SIC73-220	22	0.355	0.468
SIC73-270	27	0.412	0.432
SIC73-330	33	0.456	0.392
SIC73-390	39	0.580	0.372
SIC73-470	47	0.671	0.340
SIC73-560	56	0.735	0.284
SIC73-680	68	0.981	0.276
SIC73-820	82	1.110	0.256
SIC73-101	100	1.250	0.228
SIC73-121	120	1.400	0.208
SIC73-151	150	1.850	0.188
SIC73-181	180	2.110	0.168
SIC73-221	220	2.540	0.160
SIC73-271	270	4.130	0.144
SIC73-331	330	4.350	0.128
SIC73-391	390	4.860	0.120
SIC73-471	470	6.640	0.104
SIC73-561	560	7.250	0.096
SIC73-681	680	8.180	0.088
SIC73-821	820	9.680	0.080
SIC73-102	1000	15.400	0.072
SIC73-122	1200	18.100	0.070
SIC73-152	1500	18.800	0.064
SIC73-182	1800	20.600	0.055
SIC73-222	2200	32.300	0.050
SIC73-272	2700	36.800	0.046
SIC73-332	3300	40.900	0.040
SIC73-392	3900	48.800	0.037



★ Tolerance of inductance
 10~82uH±30% 100~820uH±20% 1000~3900uH±10%

★★ I_{RATED}: rated current. $\Delta L < 10\%$, $\Delta T < 45^\circ\text{C}$ at I_{RATED}

★★★ Operating temperature: -20°C to 105°C (including self-temperature rise)

★★★★ Test condition at 25°C: 1KHz, 1V

DELTA ELECTRONICS, INC.

(TAOYUAN PLANT CPBG) 252, SAN YING ROAD, KUEISAN INDUSTRIAL ZONE, TAOYUAN SHIEN, 333, TAIWAN, R.O.C.

TEL: 886-3-3591968; FAX: 886-3-3591991

http://www.deltaww.com

