

TOSHIBA FIELD EFFECT TRANSISTOR SILICON P CHANNEL MOS TYPE

2SJ342

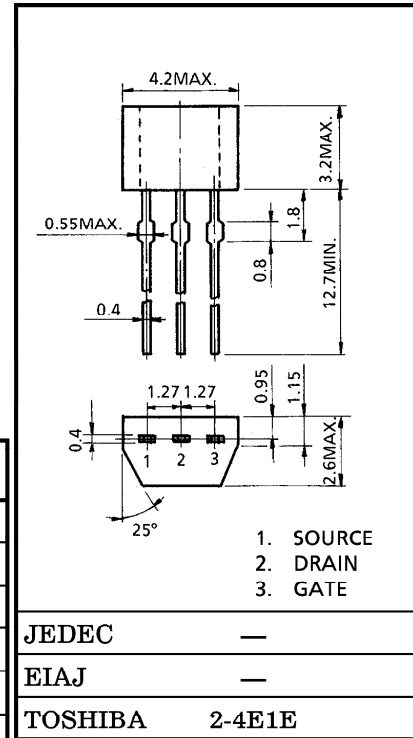
HIGH SPEED SWITCHING APPLICATIONS

ANAROG SWITCH APPLICATIONS

- Low Threshold Voltage : $V_{th} = -0.8 \sim -2.5V$
- High Speed
- Enhancement-Mode
- Small Package
- Complementary to 2SK1825

MAXIMUM RATINGS ($T_a = 25^\circ C$)

CHARACTERISTIC	SYMBOL	RATING	UNIT
Drain-Source Voltage	V_{DS}	-50	V
Gate-Source Voltage	V_{GSS}	-7	V
DC Drain Current	I_D	-50	mA
Drain Power Dissipation	P_D	300	mW
Channel Temperature	T_{ch}	150	$^\circ C$
Storage Temperature Range	T_{stg}	-55~150	$^\circ C$



Weight : 0.13g

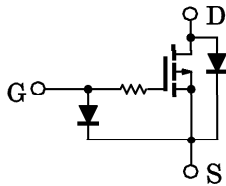
ELECTRICAL CHARACTERISTICS ($T_a = 25^\circ C$)

CHARACTERISTIC	SYMBOL	TEST CONDITION	MIN.	TYP.	MAX.	UNIT
Gate Leakage Current	I_{GSS}	$V_{GS} = -7V, V_{DS} = 0$	—	—	-1	μA
Drain-Source Breakdown Voltage	$V_{(BR)DSS}$	$I_D = -100\mu A, V_{GS} = 0$	-50	—	—	V
Drain Cut-off Current	I_{DSS}	$V_{DS} = -50V, V_{GS} = 0$	—	—	-1	μA
Gate Threshold Voltage	V_{th}	$V_{DS} = -5V, I_D = -0.1mA$	-0.8	—	-2.5	V
Forward Transfer Admittance	$ Y_{fs} $	$V_{DS} = -5V, I_D = -10mA$	15	—	—	mS
Drain-Source ON Resistance	$R_{DS(ON)}$	$I_D = -10mA, V_{GS} = -4V$	—	20	50	Ω
Input Capacitance	C_{iss}	$V_{DS} = -5V, V_{GS} = 0, f = 1MHz$	—	10.5	—	pF
Reverse Transfer Capacitance	C_{rss}	$V_{DS} = -5V, V_{GS} = 0, f = 1MHz$	—	1.9	—	pF
Output Capacitance	C_{oss}	$V_{DS} = -5V, V_{GS} = 0, f = 1MHz$	—	7.2	—	pF
Switching Time	Turn-on Time	t_{on}	—	0.15	—	μs
	Turn-off Time	t_{off}	—	0.13	—	

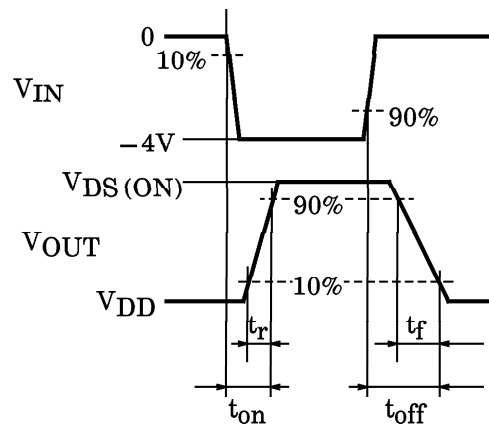
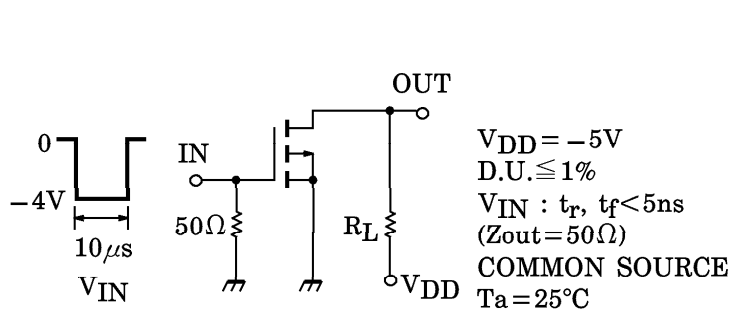
961001EAA2

● TOSHIBA is continually working to improve the quality and the reliability of its products. Nevertheless, semiconductor devices in general can malfunction or fail due to their inherent electrical sensitivity and vulnerability to physical stress. It is the responsibility of the buyer, when utilizing TOSHIBA products, to observe standards of safety, and to avoid situations in which a malfunction or failure of a TOSHIBA product could cause loss of human life, bodily injury or damage to property. In developing your designs, please ensure that TOSHIBA products are used within specified operating ranges as set forth in the most recent products specifications. Also, please keep in mind the precautions and conditions set forth in the TOSHIBA Semiconductor Reliability Handbook.

EQUIVALENT CIRCUIT

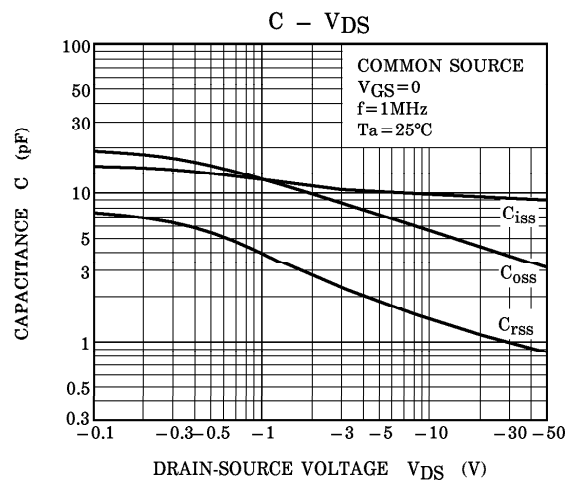
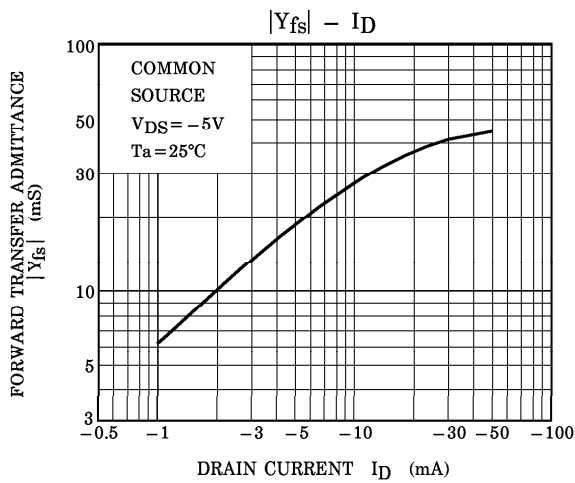
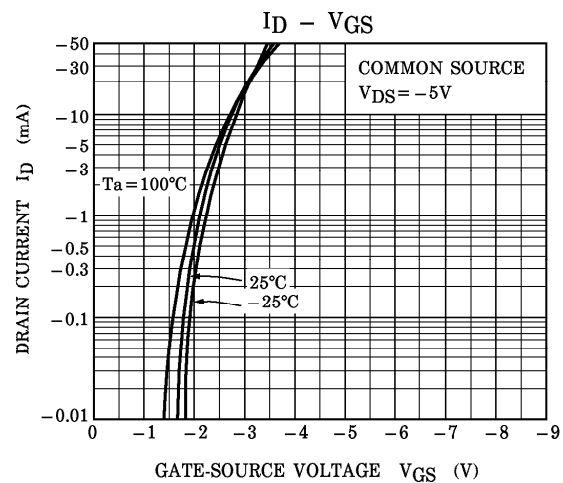
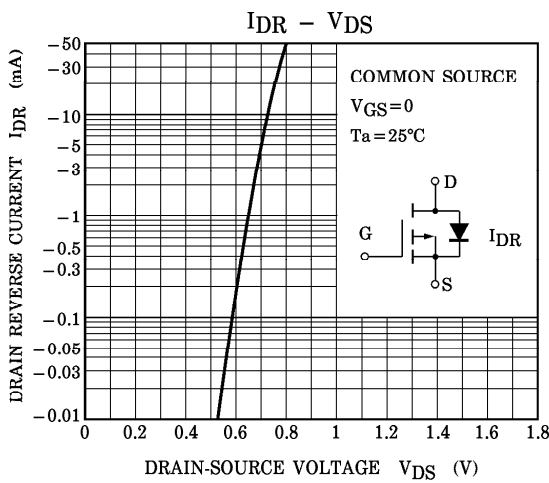
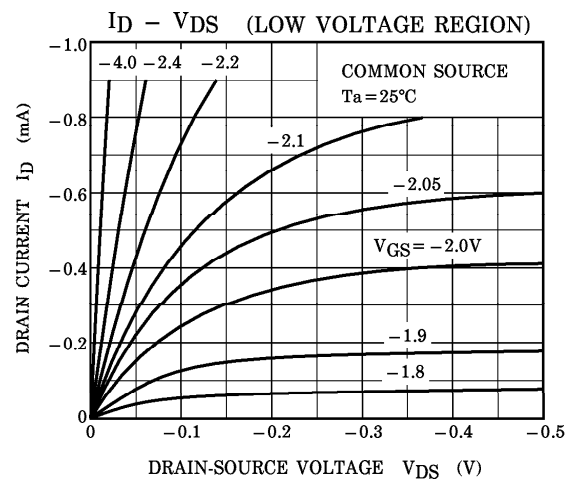
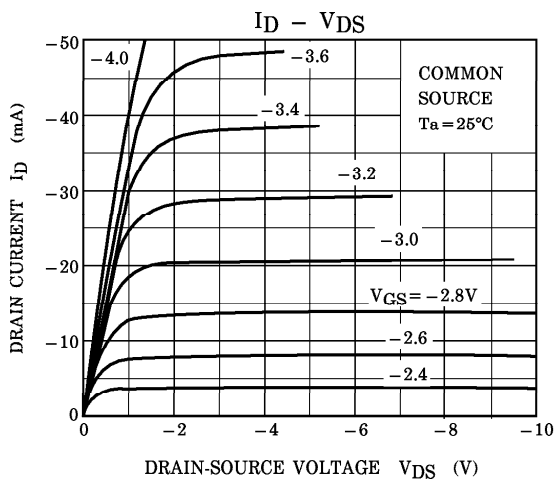


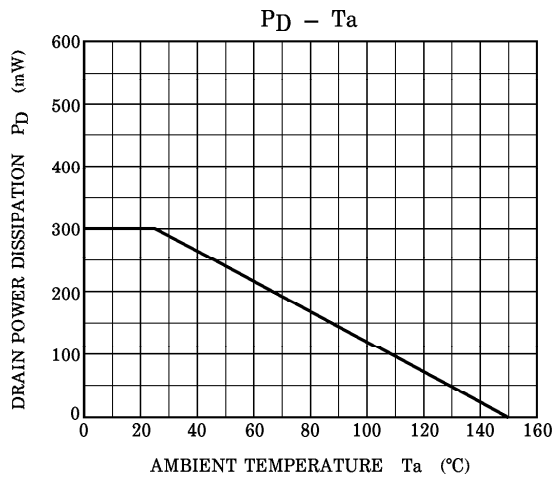
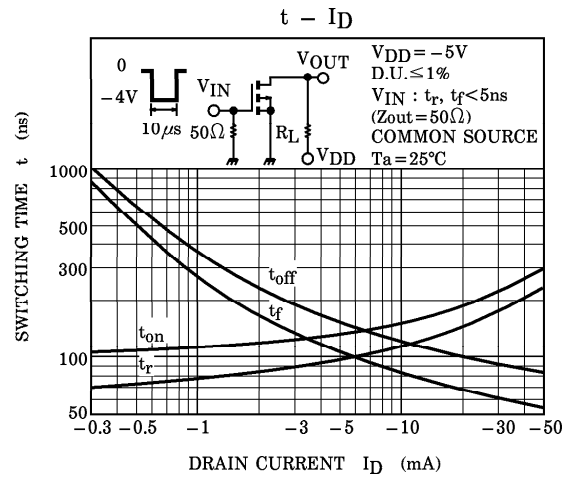
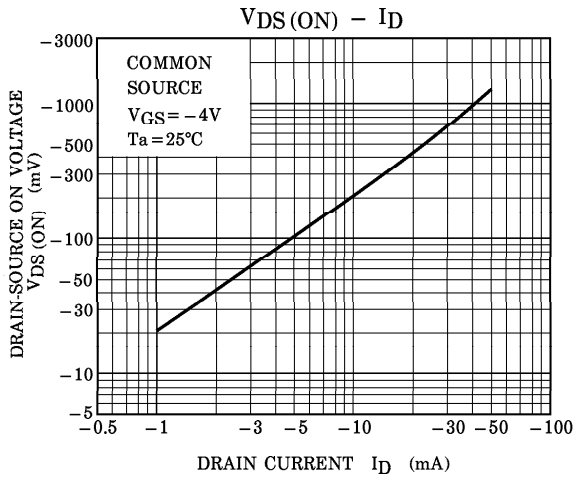
SWITCHING TIME TEST CIRCUIT



961001EAA2'

- The information contained herein is presented only as a guide for the applications of our products. No responsibility is assumed by TOSHIBA CORPORATION for any infringements of intellectual property or other rights of the third parties which may result from its use. No license is granted by implication or otherwise under any intellectual property or other rights of TOSHIBA CORPORATION or others.
- The information contained herein is subject to change without notice.





Copyright Each Manufacturing Company.

All Datasheets cannot be modified without permission.

This datasheet has been download from :

www.AllDataSheet.com

100% Free DataSheet Search Site.

Free Download.

No Register.

Fast Search System.

www.AllDataSheet.com