



HellermannTyton's Pro-Duct wiring duct efficiently routes and protects wire and cable. Manufactured from high impact, rigid PVC, Pro-Duct includes **solid**, **slotted** and **high density slotted** styles. Available in over 26 sizes. Pro-Duct comes in standard colors of gray and white in 6 foot lengths. Black and blue colored wiring duct is also available in a variety of standard sizes. Other colors are available. Contact HellermannTyton for minimum volume requirements.

Pro-Duct is U.L. Recognized, CSA Certified, and carries a U.L. flame rating of 94V-0.

Pro-Duct Features

All styles of Pro-Duct wiring duct (solid, slotted and high density slotted) are designed with many INSTALLER PREFERRED features:

- **Enhanced Wire Capacity** helps maximize space within panels.
- **Smooth Edges** ensure worker safety as there are no sharp finishes which can potentially cause injury.
- **Cover is Flush** with the side of the duct for increased wire capacity. It also allows for tight, side-by-side placement.
- **No Cover Slippage.** The covers are provided with a non-slip plastic lining. This ensures that the covers remain in place during vibration, yet they easily snap on and off, offering ready access to the wire run.
- **Mounting Holes Are Designed for Installation Versatility.** Longer mounting hole dimensions allow for changes in panel designs and installation flexibility.
- **Interchangeable Covers** between solid, slotted, and high density slotted styles reduce inventory and increase versatility.
- **Professional Appearance** increases panel's overall neatness.

Solid Wall Duct



Solid wall duct is designed for straight wire runs where break-outs are not required.

- PVC Material
- Smooth Edges
- Non-Slip Cover
- Professional Appearance

See the Solid Wall Pro-Duct chart on page 5 for part numbers and dimensions.

Slotted Wall Duct

Slotted wall duct features break-away fingers which provide additional access for wire leads.

- **Slotted wall duct is manufactured with two score lines.**

The first score line is at the base of the finger, allowing the finger to be bent and broken away when a greater opening is required. The second score line is lower, allowing a section of the sidewall to be easily removed by cutting the sidewall down to the lower score line. Use HellermannTyton's TDNT notching tool and snap out the desired section. Both score lines provide smooth edges to ensure worker safety.

- **Strong fingers prevent unwanted breaking.**

The individual finger is easily deflected outward, allowing ready positioning of the wires within the slotted wall duct.

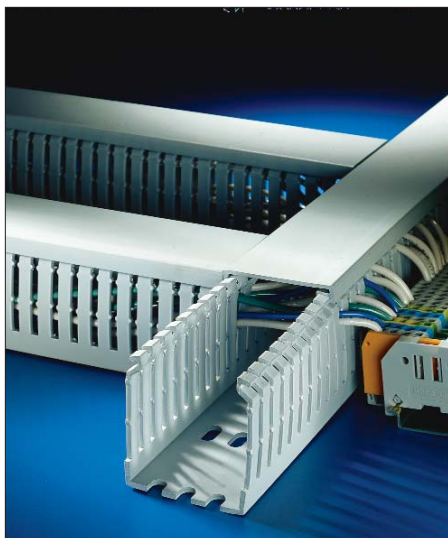
- **Restricted opening design in the finger of the duct helps keep wires in place.**

Restriction also prevents unintended removal of wires and permits any individual wire to be traced without disconnection.

See the Slotted Wall Pro-Duct chart on page 6 for part numbers and dimensions.



High Density Slotted Wall Duct



High density slotted wall duct comes with narrow fingers, equaling a 2-to-1 finger ratio compared to standard slotted wiring duct.

- **Narrow fingers reduce fanning of the wires to the terminal blocks.**
Compact designs and components are more easily accommodated with the high density duct's 2-to-1 finger ratio.
- **High density duct also incorporates the double scored design, similar to the standard slotted wall duct.**
- **With sizes 2" high and above, high density duct features a double restriction on each finger of the duct.**
The double restriction helps keep wires in the bottom portion of the duct for easier installation.
- **Mounting holes are uniform in size to the solid and slotted wall duct, but are offered every 2 inches to accommodate compact designs and installations.**

See the High Density Slotted Wall Pro-Duct chart on page 7 for part numbers and dimensions.

Adhesive Backing

All sizes of Pro-Duct wiring duct can come with pressure sensitive, rubber based adhesive backing. The adhesive backing can be utilized for temporary positioning or permanent mounting. ***This is an optional feature and must be specified when ordering.*** For part number information, contact HellermannTyton or see notation at the end of each duct dimensional chart.

Duct Width	Rows of Tape	Tape Width
.50"	1	3/8"
.75"	1	1/2"
1.0"	1	3/4"
1.5"	1	1-1/8"
2.0"	2	3/4"
3.0"	2	3/4"
4.0"	2	3/4"

Modular Packaging

Pro-Duct wiring duct is available in modular, easy to stock packaging. Each master carton contains 120 feet of duct divided into four inner cartons of 30 feet each. This better serves the inventory needs of users who require smaller quantities of several sizes. Due to weight restrictions, 3" x 5" and 4" x 5" sizes are only available in bulk packaging. To order modular packaging, remove the last digit "4" from the duct or cover part number.

Covers

Covers for Pro-Duct wiring duct are sold separately. The covers are interchangeable among the 3 styles of duct (solid, slotted and high density).

For modular packaging, remove the last digit "4" from the HellermannTyton part number. e.g., TC1G = 1" width cover/gray/modular packaging.

HellermannTyton Part No	Description	Color	Pkg. Qty.
TC.5G4 TC.5W4	.5" width cover	Gray White	120' of 6' sections
TC.75G4 TC.75W4	.75" width cover	Gray White	120' of 6' sections
TC1G4 TC1W4	1" width cover	Gray White	120' of 6' sections
TC1.5G4 TC1.5W4	1.5" width cover	Gray White	120' of 6' sections
TC2G4 TC2W4	2" width cover	Gray White	120' of 6' sections
TC3G4 TC3W4	3" width cover	Gray White	120' of 6' sections
TC4G4 TC4W4	4" width cover	Gray White	120' of 6' sections
TC6G4 TC6W4	6" width cover	Gray White	60' of 6' sections
TC8G TC8W4	8" width cover	Gray White	60' of 6' sections

SOLID AND SLOTTED WALL DUCT WIRE RETAINERS

HellermannTyton wire retainers help manage wire and cable within standard slotted and solid wall Pro-Duct. The retainers hold wire and cable in place within the duct prior to cover attachment. No special tools are required for application of either slotted or solid wall wire retainers.

Slotted Style Wire Retainers

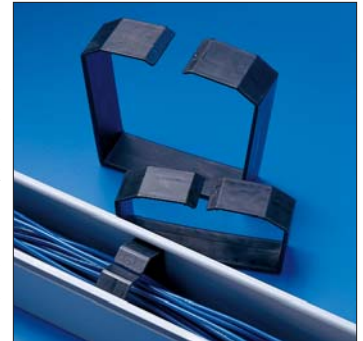
The slotted wall wire retainer snaps in from the outside of the duct, allowing for fast and easy installation and removal. The retainer spans approximately 90% over the duct opening for effective wire management. Slotted wall wire retainers are manufactured from black nylon 6/6.



Hellermann-Tyton Part No.	Description	Color	Pkg. Qty.
SLWR20C2	Wire Retainer for 2" Wide Slotted Duct	Black	100
SLWR30C2	Wire Retainer for 3" Wide Slotted Duct	Black	100
SLWR40C2	Wire Retainer for 4" Wide Slotted Duct	Black	100

Solid Style Wire Retainers

The solid wall wire retainer is inserted in the duct and snaps into place. The retainer can be used on any smooth, straight run of duct and can work with vertical and overhead applications. Solid wall wire retainers are manufactured from black PVC.



Hellermann-Tyton Part No.	Description	Color	Pkg. Qty.
SDWR2x20K2	Wire Retainer for 2"x 2" Solid Duct	Black	50
SDWR4x20K2	Wire Retainer for 4"x 2" Solid Duct	Black	50
SDWR4x40P2	Wire Retainer for 4"x 4" Solid Duct	Black	10

WIRING DUCT ACCESSORIES

Panel Mounting Rivets and Tool



HellermannTyton panel rivets are one piece drive rivets that provide a fast, economical means of affixing wiring duct. The rivet is inserted into a 3/16" pre-punched hole and the pin is driven into the base, thereby expanding the rivet legs and locking the duct and sub-panel in place. The panel thickness (including the duct thickness) should be a maximum of 3/16". A panel rivet tool is also available for quick and easy installation of the drive rivets.

HellermannTyton Part No.	Description	Pkg. Qty.
PR1	Panel Rivets	1000
PRT1	Panel Rivet Tool	1

Straight Connectors



HellermannTyton's PVC straight connectors join straight duct runs to cover and protect wires. The connectors can be used with all sizes of duct. Supplied in six foot lengths, they can be cut to fit duct sidewall heights.

HellermannTyton Part No.	Color	Pkg. Qty.
SCG	Gray	One 6 ft. length
SCW	White	One 6 ft. length

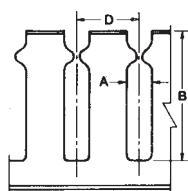
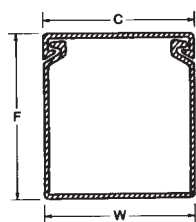
Corner Strips



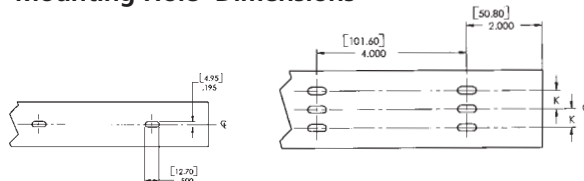
HellermannTyton corner strips are supplied in six foot lengths which can be cut to provide a rounded corner for two duct sections meeting at right angles. They are made from PVC material and can be used with any size HellermannTyton wiring duct.

HellermannTyton Part No.	Color	Pkg. Qty.
CSG	Gray	One 6 ft. length
CSW	White	One 6 ft. length

Slotted Wall Duct



Mounting Hole Dimensions



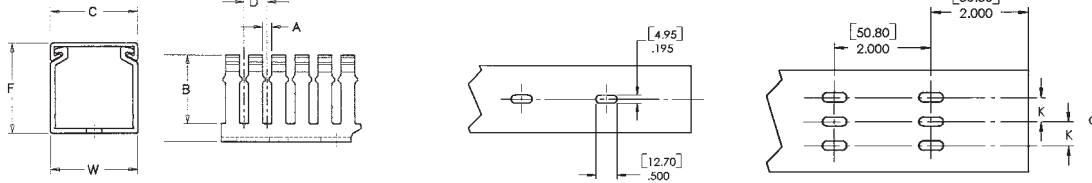
Hellermann Tyton Part No.*	Product Description	Color	Nominal Duct Size WxH In. (mm)	Dimensions — In. (mm)							Pkg. Qty. (Bulk)
				A	B	C	D	F	K	W	
SL1x1G4 SL1x1W4	Slotted	Gray White	1 x 1 (25.4 x 25.4)	.40 (10.2)	.75 (19.1)	1.00 (25.4)	1.00 (25.4)	1.05 (26.7)	On Center Line (C/L)	1.00 (25.4)	120' (6' Lengths)
SL1x1.5G4 SL1x1.5W4	Slotted	Gray White	1 x 1.5 (25.4 x 38.1)	.40 (10.2)	1.19 (30.2)	1.00 (25.4)	1.00 (25.4)	1.56 (39.6)		1.02 (25.9)	120' (6' Lengths)
SL1x2G4 SL1x2W4	Slotted	Gray White	1 x 2 (25.4 x 50.8)	.40 (10.2)	1.62 (41.1)	1.00 (25.4)	1.00 (25.4)	2.06 (52.3)		1.03 (26.2)	120' (6' Lengths)
SL1x3G4 SL1x3W4	Slotted	Gray White	1 x 3 (25.4 x 76.2)	.40 (10.2)	2.60 (66.0)	1.00 (25.4)	1.00 (25.4)	3.06 (77.7)		1.02 (25.9)	120' (6' Lengths)
SL1x4G4 SL1x4W4	Slotted	Gray White	1 x 4 (25.4 x 101.6)	.40 (10.2)	3.60 (91.4)	1.00 (25.4)	1.00 (25.4)	4.06 (103.1)		1.00 (25.4)	120' (6' Lengths)
SL1.5x1G4 SL1.5x1W4	Slotted	Gray White	1.5 x 1 (38.1 x 25.4)	.40 (10.2)	.75 (19.1)	1.50 (38.1)	1.00 (25.4)	1.05 (26.7)		1.50 (38.1)	120' (6' Lengths)
SL1.5x1.5G4 SL1.5x1.5W4	Slotted	Gray White	1.5 x 1.5 (38.1 x 38.1)	.40 (10.2)	1.19 (30.2)	1.50 (38.1)	1.00 (25.4)	1.56 (39.6)		1.52 (38.6)	120' (6' Lengths)
SL1.5x2G4 SL1.5x2W4	Slotted	Gray White	1.5 x 2 (38.1 x 50.8)	.40 (10.2)	1.62 (41.1)	1.50 (38.1)	1.00 (25.4)	2.06 (52.3)		1.53 (38.9)	120' (6' Lengths)
SL1.5x3G4 SL1.5x3W4	Slotted	Gray White	1.5 x 3 (38.1 x 76.2)	.40 (10.2)	2.60 (66.0)	1.50 (38.1)	1.00 (25.4)	3.06 (77.7)		1.52 (38.6)	120' (6' Lengths)
SL1.5x4G4 SL1.5x4W4	Slotted	Gray White	1.5 x 4 (38.1 x 101.6)	.40 (10.2)	3.60 (91.4)	1.50 (38.1)	1.00 (25.4)	4.06 (103.1)		1.50 (38.1)	120' (6' Lengths)
SL2x1G4 SL2x1W4	Slotted	Gray White	2 x 1 (50.8 x 25.4)	.40 (10.2)	.75 (19.1)	2.00 (50.8)	1.00 (25.4)	1.05 (26.7)	.50 (12.7)	2.01 (51.1)	120' (6' Lengths)
SL2x2G4 SL2x2W4	Slotted	Gray White	2 x 2 (50.8 x 50.8)	.40 (10.2)	1.62 (41.1)	2.00 (50.8)	1.00 (25.4)	2.06 (52.3)	.50 (12.7)	2.03 (51.6)	120' (6' Lengths)
SL2x3G4 SL2x3W4	Slotted	Gray White	2 x 3 (50.8 x 76.2)	.40 (10.2)	2.60 (66.0)	2.00 (50.8)	1.00 (25.4)	3.06 (77.7)	.50 (12.7)	2.02 (51.3)	120' (6' Lengths)
SL2x4G4 SL2x4W4	Slotted	Gray White	2 x 4 (50.8 x 101.6)	.40 (10.2)	3.60 (91.4)	2.00 (50.8)	1.00 (25.4)	4.06 (103.1)	.50 (12.7)	2.00 (50.8)	120' (6' Lengths)
SL3x1G4 SL3x1W4	Slotted	Gray White	3 x 1 (76.2 x 25.4)	.40 (10.2)	.75 (19.1)	3.00 (76.2)	1.00 (25.4)	1.05 (26.7)	1.00 (25.4)	3.04 (77.2)	120' (6' Lengths)
SL3x2G4 SL3x2W4	Slotted	Gray White	3 x 2 (76.2 x 50.8)	.40 (10.2)	1.62 (41.1)	3.00 (76.2)	1.00 (25.4)	2.06 (52.5)	1.00 (25.4)	3.03 (77.0)	120' (6' Lengths)
SL3x3G4 SL3x3W4	Slotted	Gray White	3 x 3 (76.2 x 76.2)	.40 (10.2)	2.60 (66.0)	3.00 (76.2)	1.00 (25.4)	3.06 (77.7)	1.00 (25.4)	3.02 (76.7)	120' (6' Lengths)
SL3x4G4 SL3x4W4	Slotted	Gray White	3 x 4 (76.2 x 101.6)	.40 (10.2)	3.60 (91.4)	3.00 (76.2)	1.00 (25.4)	4.06 (103.1)	1.00 (25.4)	3.00 (76.2)	120' (6' Lengths)
SL3x5G4 SL3x5W4	Slotted	Gray White	3 x 5 (76.2 x 127.0)	.40 (10.2)	4.60 (116.8)	3.00 (76.2)	1.00 (25.4)	5.06 (128.5)	1.00 (25.4)	3.00 (76.2)	120' (6' Lengths)
SL4x2G4 SL4x2W4	Slotted	Gray White	4 x 2 (101.6 x 50.8)	.40 (10.2)	1.62 (41.1)	4.00 (101.6)	1.00 (25.4)	2.06 (52.3)	1.50 (38.1)	4.03 (102.4)	120' (6' Lengths)
SL4x3G4 SL4x3W4	Slotted	Gray White	4 x 3 (101.6 x 76.2)	.40 (10.2)	2.60 (66.0)	4.00 (101.6)	1.00 (25.4)	3.06 (77.7)	1.50 (38.1)	4.03 (102.4)	120' (6' Lengths)
SL4x4G4 SL4x4W4	Slotted	Gray White	4 x 4 (101.6 x 101.6)	.40 (10.2)	3.60 (91.4)	4.00 (101.6)	1.00 (25.4)	4.06 (103.1)	1.50 (38.1)	4.00 (101.6)	120' (6' Lengths)
SL4x5G4 SL4x5W4	Slotted	Gray White	4 x 5 (101.6 x 127.0)	.40 (10.2)	4.60 (116.8)	4.00 (101.6)	1.00 (25.4)	5.06 (128.5)	1.50 (38.1)	4.00 (101.6)	60' (6' Lengths)

*For **modular packaging**, remove the last numerical digit (4) from the HellermannTyton part number. e.g., SL1x1G = slotted wall duct, 1" x 1" size, gray color, modular packaging. If **adhesive backing** is desired, add an "A" before the first number in each part number. e.g., SLA2x2G4 = slotted wall duct, adhesive backed, 2"x2" size, gray color, bulk packaging. **COVERS ARE ORDERED SEPARATELY.**

SEE PAGE 3.

High Density Slotted Wall Duct

Mounting Hole Dimensions



Hellermann Tyton Part No.*	Product Description	Color	Nominal Duct Size WxH In. (mm)	Dimensions — In. (mm)						Pkg. Qty. (Bulk)	
				A	B	C	D	F	K		W
SLHD1x1G4 SLHD1x1W4	High Density	Gray White	1 x 1 (25.4 x 25.4)	.16 (4.1)	.75 (19.1)	1.00 (25.4)	.40 (10.2)	1.05 (26.7)	On Center Line (C/L)	1.00 (25.4)	120' (6' Lengths)
SLHD1x1.5G4 SLHD1x1.5W4	High Density	Gray White	1 x 1.5 (25.4 x 38.1)	.16 (4.1)	1.19 (30.2)	1.00 (25.4)	.40 (10.2)	1.56 (39.6)		1.02 (25.9)	120' (6' Lengths)
SLHD1x2G4 SLHD1x2W4	High Density	Gray White	1 x 2 (25.4 x 50.8)	.16 (4.1)	1.62 (41.1)	1.00 (25.4)	.40 (10.2)	2.06 (52.3)		1.03 (26.2)	120' (6' Lengths)
SLHD1x3G4 SLHD1x3W4	High Density	Gray White	1 x 3 (25.4 x 76.2)	.16 (4.1)	2.60 (66.0)	1.00 (25.4)	.40 (10.2)	3.06 (77.7)		1.02 (25.9)	120' (6' Lengths)
SLHD1x4G4 SLHD1x4W4	High Density	Gray White	1 x 4 (25.4 x 101.6)	.16 (4.1)	3.60 (91.4)	1.00 (25.4)	.40 (10.2)	4.06 (103.1)		1.00 (25.4)	120' (6' Lengths)
SLHD1.5x1G4 SLHD1.5x1W4	High Density	Gray White	1.5 x 1 (38.1 x 25.4)	.16 (4.1)	.75 (19.1)	1.50 (38.1)	.40 (10.2)	1.05 (26.7)		1.50 (38.1)	120' (6' Lengths)
SLHD1.5x1.5G4 SLHD1.5x1.5W4	High Density	Gray White	1.5 x 1.5 (38.1 x 38.1)	.16 (4.1)	1.19 (30.2)	1.50 (38.1)	.40 (10.2)	1.56 (39.6)		1.52 (38.6)	120' (6' Lengths)
SLHD1.5x2G4 SLHD1.5x2W4	High Density	Gray White	1.5 x 2 (38.1 x 50.8)	.16 (4.1)	1.62 (41.1)	1.50 (38.1)	.40 (10.2)	2.06 (52.3)		1.53 (38.9)	120' (6' Lengths)
SLHD1.5x3G4 SLHD1.5x3W4	High Density	Gray White	1.5 x 3 (38.1 x 76.2)	.16 (4.1)	2.60 (66.0)	1.50 (38.1)	.40 (10.2)	3.06 (77.7)		1.52 (38.6)	120' (6' Lengths)
SLHD1.5x4G4 SLHD1.5x4W4	High Density	Gray White	1.5 x 4 (38.1 x 101.6)	.16 (4.1)	3.60 (91.4)	1.50 (38.1)	.40 (10.2)	4.06 (103.1)		1.50 (38.1)	120' (6' Lengths)
SLHD2x1G4 SLHD2x1W4	High Density	Gray White	2 x 1 (50.8 x 25.4)	.16 (4.1)	.75 (19.1)	2.00 (50.8)	.40 (10.2)	1.05 (26.7)	.50 (12.7)	2.01 (51.1)	120' (6' Lengths)
SLHD2x2G4 SLHD2x2W4	High Density	Gray White	2 x 2 (50.8 x 50.8)	.16 (4.1)	1.62 (41.1)	2.00 (50.8)	.40 (10.2)	2.06 (52.3)	.50 (12.7)	2.03 (51.6)	120' (6' Lengths)
SLHD2x3G4 SLHD2x3W4	High Density	Gray White	2 x 3 (50.8 x 76.2)	.16 (4.1)	2.60 (66.0)	2.00 (50.8)	.40 (10.2)	3.06 (77.7)	.50 (12.7)	2.02 (51.3)	120' (6' Lengths)
SLHD2x4G4 SLHD2x4W4	High Density	Gray White	2 x 4 (50.8 x 101.6)	.16 (4.1)	3.60 (91.4)	2.00 (50.8)	.40 (10.2)	4.06 (103.1)	.50 (12.7)	2.00 (50.8)	120' (6' Lengths)
SLHD3x1G4 SLHD3x1W4	High Density	Gray White	3 x 1 (76.2 x 25.4)	.16 (4.1)	.75 (19.1)	3.00 (76.2)	.40 (10.2)	1.05 (26.7)	1.00 (25.4)	3.04 (77.2)	120' (6' Lengths)
SLHD3x2G4 SLHD3x2W4	High Density	Gray White	3 x 2 (76.2 x 50.8)	.16 (4.1)	1.62 (41.1)	3.00 (76.2)	.40 (10.2)	2.06 (52.3)	1.00 (25.4)	3.03 (77.0)	120' (6' Lengths)
SLHD3x3G4 SLHD3x3W4	High Density	Gray White	3 x 3 (76.2 x 76.2)	.16 (4.1)	2.60 (66.0)	3.00 (76.2)	.40 (10.2)	3.06 (77.7)	1.00 (25.4)	3.02 (76.7)	120' (6' Lengths)
SLHD3x4G4 SLHD3x4W4	High Density	Gray White	3 x 4 (76.2 x 101.6)	.16 (4.1)	3.60 (91.4)	3.00 (76.2)	.40 (10.2)	4.06 (103.1)	1.00 (25.4)	3.00 (76.2)	120' (6' Lengths)
SLHD4x2G4 SLHD4x2W4	High Density	Gray White	4 x 2 (101.6 x 50.8)	.16 (4.1)	1.62 (41.1)	4.00 (101.6)	.40 (10.2)	2.06 (52.3)	1.50 (38.1)	4.03 (102.4)	120' (6' Lengths)
SLHD4x3G4 SLHD4x3W4	High Density	Gray White	4 x 3 (101.6 x 76.2)	.16 (4.1)	2.60 (66.0)	4.00 (101.6)	.40 (10.2)	3.06 (77.7)	1.50 (38.1)	4.03 (102.4)	120' (6' Lengths)
SLHD4x4G4 SLHD4x4W4	High Density	Gray White	4 x 4 (101.6 x 101.6)	.16 (4.1)	3.60 (91.4)	4.00 (101.6)	.40 (10.2)	4.06 (103.1)	1.50 (38.1)	4.00 (101.6)	120' (6' Lengths)

*For **modular packaging**, remove the last numerical digit (4) from the HellermannTyton part number. e.g., SLHD1x1G = slotted wall high density duct, 1" x 1" size, gray color, modular packaging. If **adhesive backing** is desired, add an "A" before the first number in each part number. e.g., SLHDA2x2G4 = slotted wall high density duct, adhesive backed, 2" x 2" size, gray color, bulk packaging. **COVERS ARE ORDERED SEPARATELY. SEE PAGE 3.**

PVC Prō-Duct Wiring Duct Material Properties

Physical Properties		Material	ASTM Test Method	Test Units	Test Results
Specific Gravity (Gray)		PVC	D-792	—	1.4
Durometer Hardness		PVC	D-2240	Shore Hardness	80D
Flexural Strength		PVC	D-790	psi	12,000
Modulus of Elasticity (Tension)		PVC	D-638	psi	360,000
Dielectric Constant	60 cps @ 30pC 60H	PVC	D-150	—	3.9
	1,000 cps @ 30p C 10°H	PVC	D-150	—	3.3
Coefficient of Thermal Conductivity		PVC	D-177	btu/in.hr.FT²/pF	1.3
Coefficient of Linear Expansion		PVC	D-696	in./in./ pF	4.0 x 10 ⁻⁵
Heat Deflection Temperature (264 psi)		PVC	D-648	pF	155
Tensile Strength (+73pF)		PVC	D-638	psi	6,600
Izod Impact Strength (+73pF)		PVC	D-256	ft. lbs./in. notch	15.0
Flame Resistance		PVC	D-635	—	Self-extinguishing
UL Standard 94		PVC		.029 and .062	94V-O

Prō-Duct Wiring Capacity*

Duct Size (WxH)	Duct Area (Sq. In.)	12 AWG	14AWG	14AWG	16AWG	18AWG	22AWG
		Wire O.D.					
		0.158	0.165	0.139	0.125	0.113	0.065
.5x.5	0.18	5	4	6	7	9	27
.5x1	0.38	10	9	13	15	19	57
.75x.75	0.28	7	7	9	11	14	42
1x1	0.731	19	17	24	30	36	110
1x1.5	1.15	29	27	38	47	57	173
1x2	1.564	40	37	52	64	78	236
1x3	2.31	59	54	76	94	115	348
1x4	2.98	76	70	98	121	149	449
1.5x1	1.196	30	28	39	49	60	180
1.5x1.5	1.864	48	44	61	76	93	281
1.5x2	2.527	64	59	83	103	126	381
1.5x3	3.761	96	88	124	153	188	567
1.5x4	4.92	125	115	162	200	245	741
2x1	1.665	42	39	55	68	83	251
2x2	3.482	89	81	115	142	174	525
2x3	5.213	133	122	172	212	260	785
2x4	6.874	175	161	226	280	343	1036
3x1	2.584	66	60	85	105	129	389
3x2	5.4	138	126	178	220	269	814
3x3	8.12	207	190	267	331	405	1223
3x4	10.77	275	252	355	439	537	1623
3x5	13.44	343	314	443	548	670	2025
4x2	7.32	187	171	241	298	365	1103
4x3	11.00	281	257	363	448	549	1658
4x4	14.66	374	343	483	597	731	2209
4x5	18.32	467	428	604	747	913	2761
6x4	22.32	569	522	735	909	1113	3363
8x4	30.01	765	702	989	1223	1496	4522

Formula used to calculate fill capacity: Number of wires = duct area / (1.57 x (wire o.d.)²) or duct area x (0.637/(wire o.d.)²)

* 50% Fill Capacity



HellermannTyton Corporate Headquarters

7930 N. Faulkner Rd, PO Box 245017

Milwaukee, WI 53224

Phone: (414) 355-1130, (800) 537-1512

Fax: (414) 355-7341, (800) 848-9866

http://www.hellermann.tyton.com • email: corp@htamericas.com

A QS9000 and ISO14001 Registered Company

HellermannTyton Canada

Beaver Creek Business Park

Unit #1, 160 West Beaver Creek

Richmond Hill, Ontario L4B 1B4 Canada

Phone: (905) 882-8024, (800) 661-2461

Fax: (905) 882-1624, (800) 390-3904

email: sales@hellermanntyton.ca

HellermannTyton Mexico

Rio Conchos 1757

Colonia Industrial El Rosario

Guadalajara, Jalisco, Mexico 44890

Phone: (3) 659-7020

Fax: (3) 659-6939

email: info@hellermanntyton.com.mx