

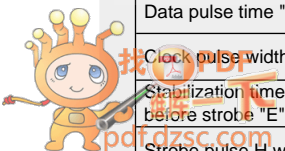
2-Phase Stepper Motor Unipolar Driver ICs

Absolute Maximum Ratings

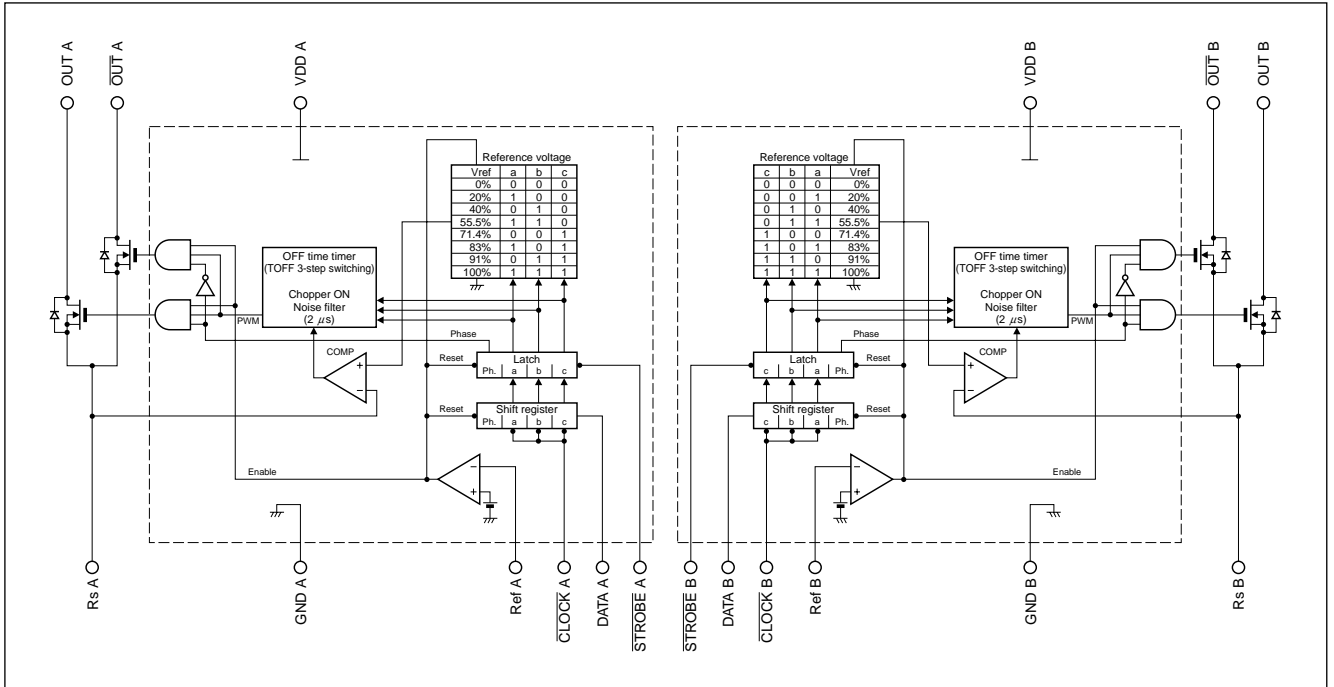
Parameter	Symbol	Ratings		Units
		SLA7042M	SLA7044M	
Motor supply voltage	V_{CC}	46		V
FET Drain-Source voltage	V_{DSS}	100		V
Control supply voltage	V_{DD}	7		V
Input voltage	V_{IN}	-0.5 to $V_{DD}+0.5$		V
Output current	I_O	1.2	3	A
Power dissipation	P_D	4.5 (Without Heatsink)		W
Channel temperature	T_{ch}	+150		°C
Storage temperature	T_{stg}	-40 to +150		°C

Electrical Characteristics

Parameter	Symbol	Ratings						Units	
		SLA7042M			SLA7044M				
		min	typ	max	min	typ	max		
Control supply current	I_{DD}	$V_{DD}=5.5V$			$V_{DD}=5.5V$			mA	
	Conditions								
Control supply voltage	V_{DD}	4.5	5	5.5	4.5	5	5.5	V	
	Conditions								
Terminals DATA, CLOCK and STROBE	Input voltage	V_{IH}	3.5	5	3.5	5	5	V	
		Conditions	$V_{DD}=5V$			$V_{DD}=5V$			
	Input hysteresis voltage	V_H	1			1			V
		Conditions	$V_{DD}=5V$			$V_{DD}=5V$			
Input current	I	± 1			± 1			μA	
	Conditions	$V_{DD}=5V, V_I=0$ or 5V			$V_{DD}=5V, V_I=0$ or 5V				
REF terminal	Input voltage	V_{REF}	0.4	2.5	0.4	2.5	2.5	V	
		Conditions	$V_{DD}=5V$			$V_{DD}=5V$			
	Input current	I_{REF}	± 1			± 1			μA
		Conditions	$V_{DD}=5V, V_I=0$ or 5V			$V_{DD}=5V, V_I=0$ or 5V			
DC characteristics	Reference voltage selection output voltage	V_{ref}	0			0			%
		Conditions	MODE 0			MODE 0			
		V_{ref}	20			20			
		Conditions	MODE 1			MODE 1			
		V_{ref}	40			40			
		Conditions	MODE 2			MODE 2			
		V_{ref}	55.5			55.5			
		Conditions	MODE 3			MODE 3			
		V_{ref}	71.4			71.4			
		Conditions	MODE 4			MODE 4			
		V_{ref}	83			83			
		Conditions	MODE 5			MODE 5			
		V_{ref}	91			91			
		Conditions	MODE 6			MODE 6			
V_{ref}	100			100					
Conditions	MODE 7			MODE 7					
FET ON voltage	V_{DS}	0.8			1.4			V	
	Conditions	$I_D=1.2A, V_{DD}=4.75V$			$I_D=3A, V_{DD}=4.75V$				
FET Drain-Source voltage	V_{DSS}	100			100			V	
	Conditions	$I_{DSS}=4mA, V_{DD}=5V$			$I_{DSS}=4mA, V_{DD}=5V$				
FET drain leakage current	I_{DSS}	4			4			mA	
	Conditions	$V_{DSS}=100V, V_{DD}=5V$			$V_{DSS}=100V, V_{DD}=5V$				
FET diode forward voltage	V_{SD}	1.2			2.3			V	
	Conditions	$I_D=1.2A$			$I_D=3A$				
Chopper off time	T_{OFF}	7			7			μs	
	Conditions	MODE 1, 2			MODE 1, 2				
	T_{OFF}	9			9				
	Conditions	MODE 3, 4, 5			MODE 3, 4, 5				
	T_{OFF}	11			11				
Switching time	T_r	0.5			0.5			μs	
	Conditions	$V_{DD}=5V, I_D=1A$			$V_{DD}=5V, I_D=1A$				
	T_{stg}	0.7			0.7				
	Conditions	$V_{DD}=5V, I_D=1A$			$V_{DD}=5V, I_D=1A$				
	T_f	0.1			0.1				
Data setup time "A"	t_{sDAT}	75			75			ns	
	Conditions	Inter-clock			Inter-clock				
Data hold time "B"	t_{hDAT}	75			75			ns	
	Conditions	Inter-clock			Inter-clock				
Data pulse time "C"	t_{wDAT}	150			150			ns	
	Conditions								
Clock pulse width "D"	t_{wCLK}	100			100			ns	
	Conditions								
Stabilization time before strobe "E"	t_{psSTB}	100			100			ns	
	Conditions	Strobe=L from clock			Strobe=L from clock				
Strobe pulse H width "F"	t_{whSTB}	100			100			ns	
	Conditions								



Internal Block Diagram

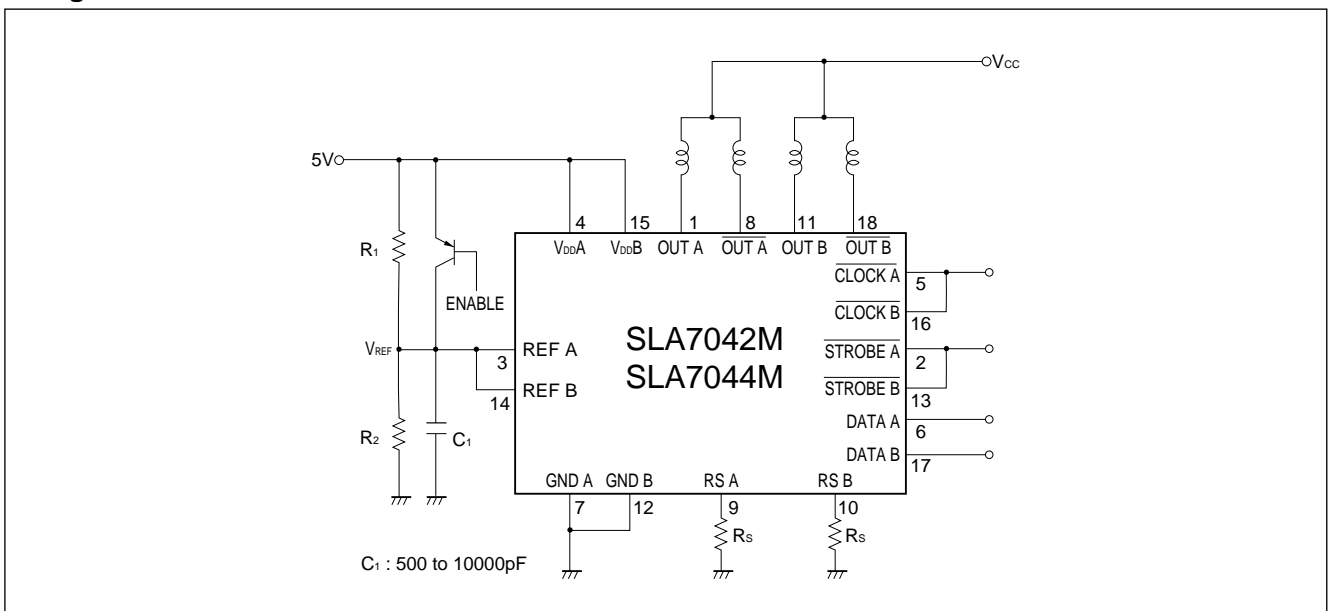


Output Current Formula

$$I_o = \frac{K}{3} \cdot \frac{V_{REF}}{R_s}$$

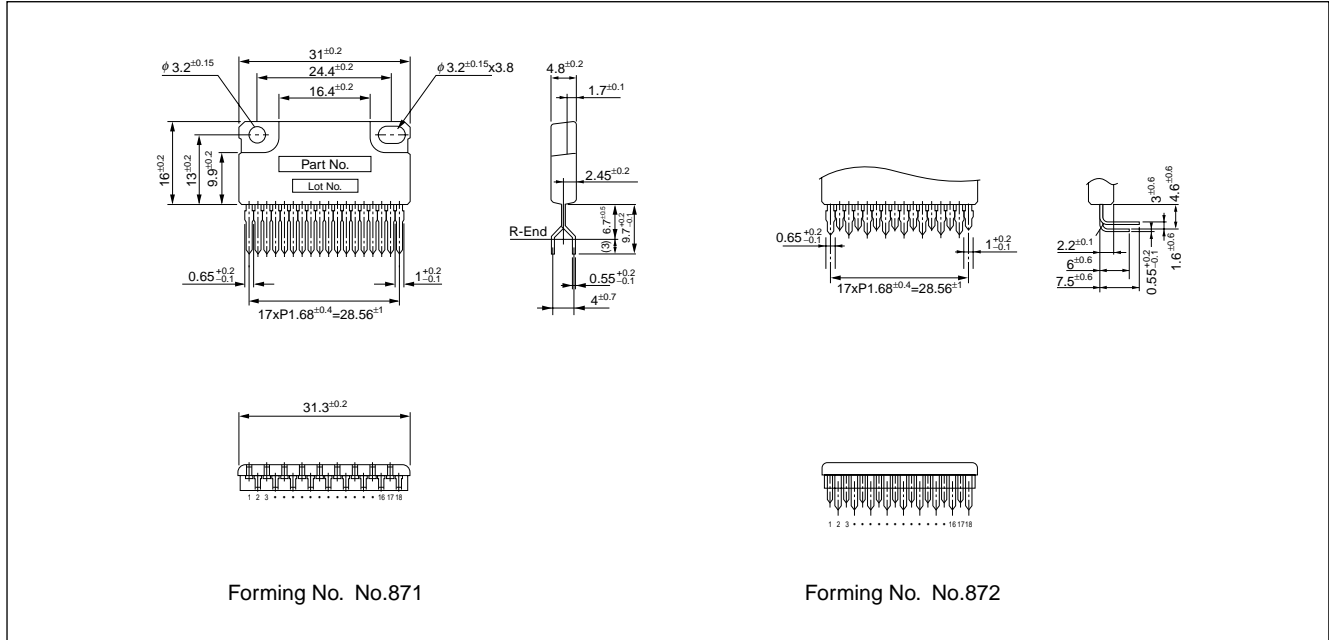
K: Reference voltage setting rate by serial signal
(See the internal block diagram)

Diagram of Standard External Circuit

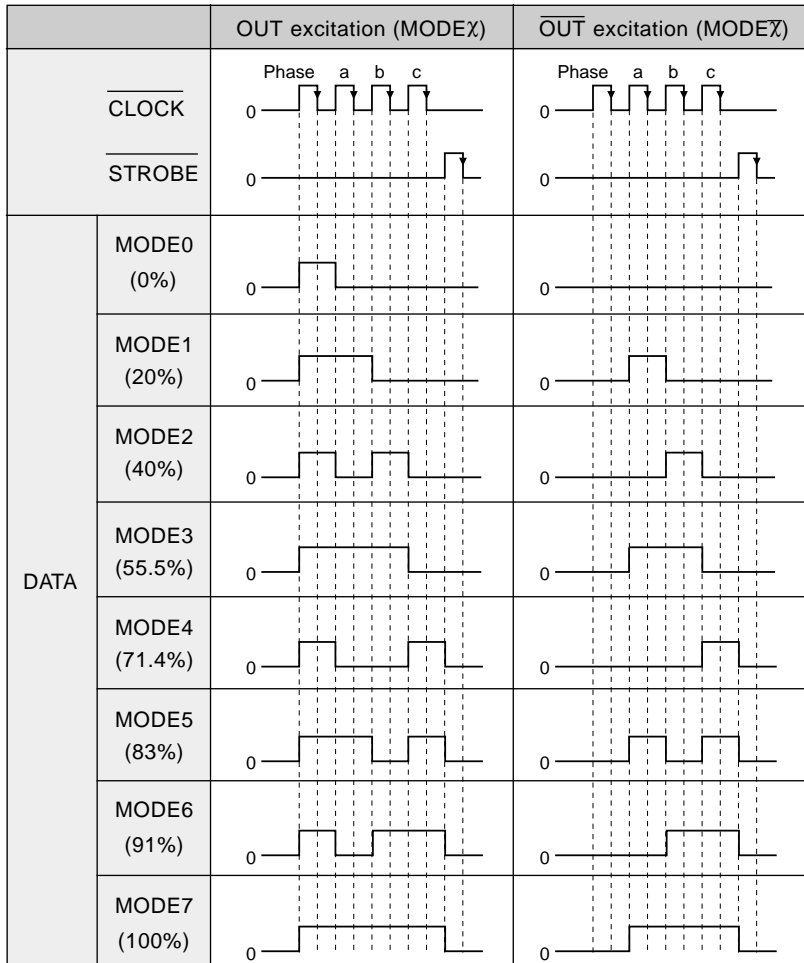


External Dimensions

(Unit: mm)



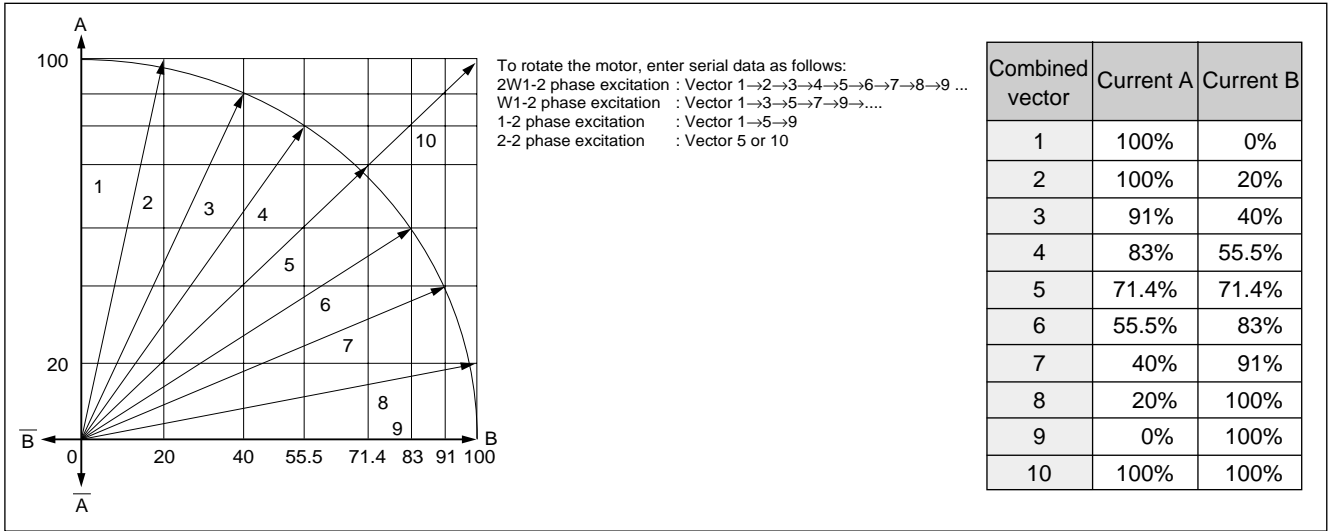
Serial Data Pattern



See page 48 for details of PG001M serial signal generator IC for SLA7042M and SLA7044M.

Successively output this serial data and set any current. Then, determine the step time of the reference voltage V_{ref} at $\overline{\text{STROBE}}$ signal intervals.

Current Vector Locus (One step of stepper motor normalized to 90 degrees)

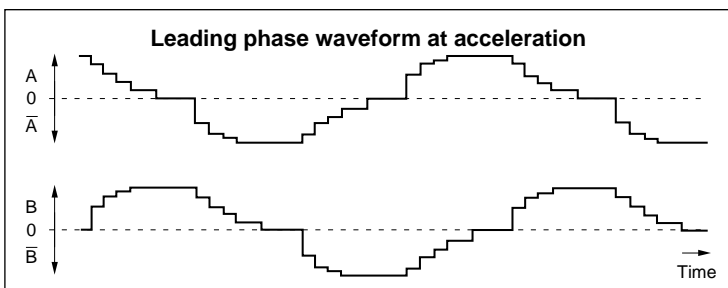
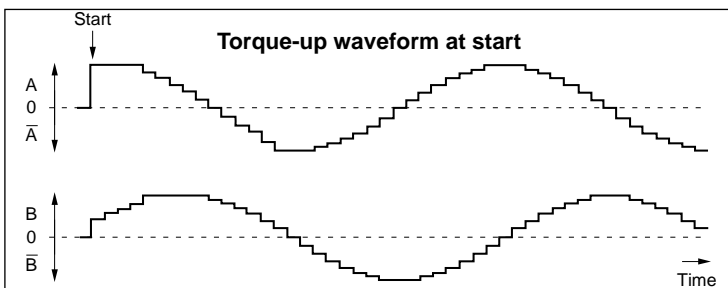
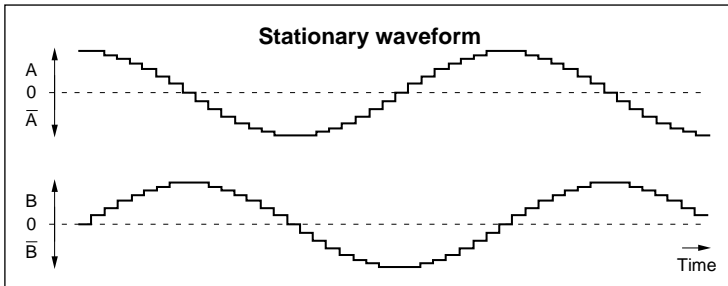


Serial Data Sequence Example (2W 1-2 Phase Excitation for CW)

Sequence	0	1	2	3	4	5	6	7	8	9	10	11	12	13	14	15	16	17	18	19	20	21	22	23	24	25	26	27	28	29	30	31	0
DATA-A MODE	4	3	2	1	0	1̄	2̄	3̄	4̄	5̄	6̄	7̄	7̄	6̄	5̄	4̄	3̄	2̄	1̄	0	1	2	3	4	5	6	7	7	6	5	4		
DATA-B MODE	4	5	6	7	7	6	5	4	3	2	1	0	1̄	2̄	3̄	4̄	5̄	6̄	7̄	7̄	6̄	5̄	4̄	3̄	2̄	1̄	0	1	2	3	4		

A malfunction may occur just after the power (V_{DD}) is turned on because the internal logic is unstable. Therefore, set the RESET state (REF terminal voltage: $V_{DD}-1V$ to V_{DD}) after the power is turned on.)

Operation Current Waveform Examples



These three types of waveforms can all be set with a serial signal.