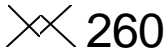


**Specification Status: Released**

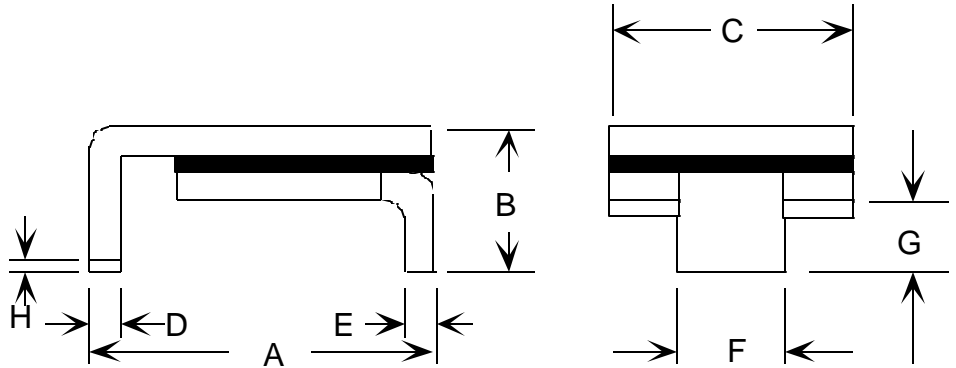
**Maximum Electrical Rating**

**Operating Voltage: 6V**  
**Interrupt Current: 40A**

Marking:



— Manufacturer's Mark  
— Part Identification



**Notes:**

1. All metal surfaces are tin plated.
2. Devices cannot be wave soldered.
3. Drawing not to scale.

**TABLE I. DIMENSIONS:**

	A		B		C		D		E		F		G		H
	MIN	MAX	MIN	MAX	MIN	MAX	MIN	MAX	MIN	MAX	MIN	MAX	MIN	MAX	MIN
mm	6.7	7.9	--	3.0	4.8	5.4	0.5	0.8	0.5	0.8	2.1	2.5	0.7	1.3	0.4
in*	(0.265)	(0.310)	--	(0.118)	(0.190)	(0.210)	(0.022)	(0.028)	(0.022)	(0.028)	(0.085)	(0.095)	(0.03)	(0.05)	(0.017)

\*Rounded off approximation

**TABLE II. PERFORMANCE RATINGS:**

I HOLD	CURRENT RATINGS				TIME TO TRIP	RESISTANCE VALUES		TRIPPED-STATE POWER DISSIPATION
	AMPS AT 20°C HOLD	AMPS AT 0°C HOLD	AMPS AT 20°C HOLD	AMPS AT 60°C HOLD		OHMS AT 20°C MIN	OHMS AT 20°C MAX*	
2.6	2.9	2.6	1.7	20	0.025	0.075	1.7	

\* Maximum Resistance is measured 1 hour after reflow at 260°C, 20 seconds

Reference Documents:

PS300

Precedence:

This specification takes precedence over documents referenced herein.

Effectivity:

Reference documents shall be the issue in effect on the date of invitation for bid.

CAUTION:

Operation beyond the rated voltage or current may result in rupture, electrical arcing or flame.