



E-Z-Code®

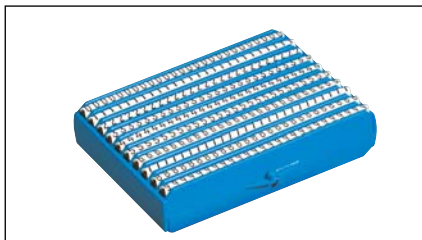
| | |
|---|---------|
| Overview | P2 |
| E-Z-Coder™ Wire Marker Printer | P3 |
| E-Z-Coder™ Wire Marker Printer & Labels | P4 |
| Identification Software | P5-P6 |
| Wire Marker Books | P7-P9 |
| Wire Marker Cards – Vinyl Cloth | P10-P16 |
| Wire Marker Cards – Vinyl Cloth – Mini Books | P17 |
| Cable Markers – Vinyl Cloth | P18-P19 |
| Wire Marker Cards – Vinyl Self-Laminating | P20-P21 |
| Write-On Markers & Roll Tape Markers | P22 |
| Standard Wire Marker Combination Packs | P23 |
| Conduit and Electrical Markers – Cards | P24 |
| Industrial Markers | P25 |
| Markers and PCB Warning Labels | P26 |
| Roll Wire Marker Dispenser | P27 |
| Color-Coded I.D. Tape | P28 |
| Protect-A-Line® Warning Tapes | P29 |
| Tape and Markers | P30 |
| Customized Embossed Tags Stainless Steel Tape Embossing System | P31 |
| Stainless Steel I.D. Tag | P32 |
| PVC Sleeve and Clip-On Markers | P33 |
| Lockout/Tagout | P34-P44 |
| Accident Prevention Tags | P45 |
| Transformer Safety Labels | P46 |
| Electrical Safety Cards and Labels | P47 |
| Safety Signs | P48-P52 |
| Custom Sign Express Order Form | P53 |

E-Z-Code®

PVC Sleeve and Clip-On Markers



The pre-printed sleeve wire markers permanently identify wires, cables, leads, harnesses, terminals, connectors and component parts to facilitate the installation, repair and servicing of equipment during production or maintenance. Sleeve markers are available in a variety of sizes and materials to meet all your needs—resistant to most chemicals, oils, solvents, fungus. Performs well in low and high temperatures.



Sleeve Markers

| Cat. No. | Recommended Wire Range | AWG | Standard Legends | Color | Package |
|----------|------------------------|-------|----------------------------|---------|-------------------------|
| SMS118* | .051-.118 | 22-16 | A-Z | | 10 strips of 25 markers |
| SMS196* | .098-.196 | 16-10 | | White | 10 strips of 25 markers |
| SMS394* | .157-.394 | 10-4 | 0-9 | w/Black | 10 strips of 25 markers |
| SMS630* | .315-.630 | 6-00 | / = SLA, + = PLS, = = GRD, | Legend | 20/Bag Loose |
| †SMS984* | .551-.984 | 0-350 | - = MIN and blank | | 20/Bag Loose |

* To Order: Add letter, number or symbol desired in place of asterisk to complete each Cat. No.

† Must be ordered as special item.

Other colors are available as specials. Contact customer service for availability.

Sleeve Markers

(1000 continuous on a reel)

| Cat. No. | Recommended Wire Range | AWG | Standard Legends | Color | Package |
|----------|------------------------|-------|---|---------|--------------|
| SMR118* | .051-.118 | 22-16 | A-Z | White | 1000 markers |
| SMR196* | .098-.196 | 16-10 | 0-9 | w/Black | continuous |
| SMR394* | .157-.394 | 10-4 | / = SLA, + = PLS, = = GRD, - = MIN and blank | Legend | on a reel |

* To Order: Add letter, number or symbol desired in place of asterisk to complete each Cat. No.

Clip-on Markers

| Cat. No. | Recommended Wire Range | AWG | Standard Legends | Color | Package |
|----------|------------------------|-------|-------------------|---------|------------------|
| SMC118* | .094-.118 | 18-16 | A-Z | White | 200/bag attached |
| SMC157* | .118-.157 | 16-14 | 0-9 | w/Black | 200/bag attached |
| SMC197* | .157-.197 | 12-10 | / = SLA, + = PLS, | Legend | 200/bag attached |
| SMC244* | .197-.244 | 8-6 | - = MIN and blank | | 200/bag attached |

* To Order: Add letter, number or symbol desired in place of asterisk to complete each Cat. No.

Magazine Dispenser Feeds Left or Right

| Cat. No. | Description | Recommended Wire Range | AWG | Legend | Color | Pkg. |
|------------|--|------------------------|-------|---------------------|--------------------------|------|
| SMPP196A | 20 Strips of 25 Markers | .098-.196 | 16-10 | 0-9 0-9 and tool | White w/ Black legend | 1 |
| SMPPT196A | 20 Strips of 25 Markers w/tool | .098-.196 | 16-10 | 0-9 0-9 | White w/ Black legend | 1 |
| SMPPCT196A | 21 Strips of Markers w/tool, assorted colors | .098-.196 | 16-10 | 0-9 0-9 | Assorted Colors | 1 |

Application tools

| Cat. No. | Description | Recommended Wire Range | AWG | Package |
|----------|------------------|------------------------|-------|---------|
| SMAT118 | Application Tool | .051-.118 | 22-16 | 5/bag |
| SMAT196 | Application Tool | .098-.196 | 16-10 | 5/bag |

Thomas & Betts