

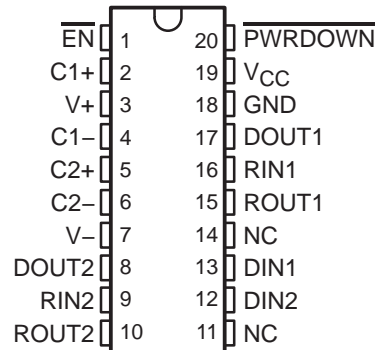
SN65C3222, SN75C3222

3-V TO 5.5-V MULTICHANNEL RS-232 COMPATIBLE LINE DRIVER/RECEIVER

SLLS534B – MAY 2002 – REVISED OCTOBER 2004

- Operates With 3-V to 5.5-V V_{CC} Supply
- Operates Up To 1 Mbit/s
- Low Standby Current . . . 1 μ A Typ
- External Capacitors . . . $4 \times 0.1 \mu$ F
- Accepts 5-V Logic Input With 3.3-V Supply
- RS-232 Bus-Pin ESD Protection Exceeds ± 15 kV Using Human-Body Model (HBM)
- Applications
 - Battery-Powered Systems, PDAs, Notebooks, Laptops, Palmtop PCs, and Hand-Held Equipment

DB, DW, OR PW PACKAGE
(TOP VIEW)



NC – No internal connection

description/ordering information

The SN65C3222 and SN75C3222 consist of two line drivers, two line receivers, and a dual charge-pump circuit with ± 15 -kV ESD protection pin to pin (serial-port connection pins, including GND). The devices provide the electrical interface between an asynchronous communication controller and the serial-port connector. The charge pump and four small external capacitors allow operation from a single 3-V to 5.5-V supply. The devices operate at data signaling rates up to 1 Mbit/s and a driver output slew rate of 24 V/ μ s to 150 V/ μ s.

The SN65C3222 and SN75C3222 can be placed in the power-down mode by setting $\overline{\text{PWRDOWN}}$ low, which draws only 1 μ A from the power supply. When the devices are powered down, the receivers remain active while the drivers are placed in the high-impedance state. Also, during power down, the onboard charge pump is disabled, $V+$ is lowered to V_{CC} , and $V-$ is raised toward GND. Receiver outputs also can be placed in the high-impedance state by setting $\overline{\text{EN}}$ high.

ORDERING INFORMATION

| T_A | PACKAGE† | | ORDERABLE PART NUMBER | TOP-SIDE MARKING |
|---------------|------------|--------------|-----------------------|------------------|
| –0°C to 70°C | SOIC (DW) | Tube of 25 | SN75C3222DW | 75C3222 |
| | | Reel of 2000 | SN75C3222DWR | |
| | SSOP (DB) | Reel of 2000 | SN75C3222DBR | CA3222 |
| | TSSOP (PW) | Tube of 70 | SN75C3222PW | CA3222 |
| | | Reel of 2000 | SN75C3222PWR | |
| –40°C to 85°C | SOIC (DW) | Tube of 25 | SN65C3222DW | 65C3222 |
| | | Reel of 2000 | SN65C3222DWR | |
| | SSOP (DB) | Reel of 2000 | SN65C3222DBR | CB3222 |
| | TSSOP (PW) | Tube of 70 | SN65C3222PW | CB3222 |
| | | Reel of 2000 | SN65C3222PWR | |

† Package drawings, standard packing quantities, thermal data, symbolization, and PCB design guidelines are available at www.ti.com/sc/package.



Please be aware that an important notice concerning availability, standard warranty, and use in critical applications of Texas Instruments semiconductor products and disclaimers thereto appears at the end of this data sheet.

PRODUCTION DATA information is current as of publication date. Products conform to specifications per the terms of Texas Instruments standard warranty. Production processing does not necessarily include testing of all parameters.

**TEXAS
INSTRUMENTS**

POST OFFICE BOX 655303 • DALLAS, TEXAS 75265

Copyright © 2004, Texas Instruments Incorporated

SN65C3222, SN75C3222
3-V TO 5.5-V MULTICHANNEL RS-232 COMPATIBLE LINE DRIVER/RECEIVER

SLLS534B – MAY 2002 – REVISED OCTOBER 2004

Function Tables

EACH DRIVER

| INPUTS | | OUTPUT DOUT |
|--------|---------|----------------|
| DIN | PWRDOWN | |
| X | L | Z |
| L | H | H |
| H | H | L |

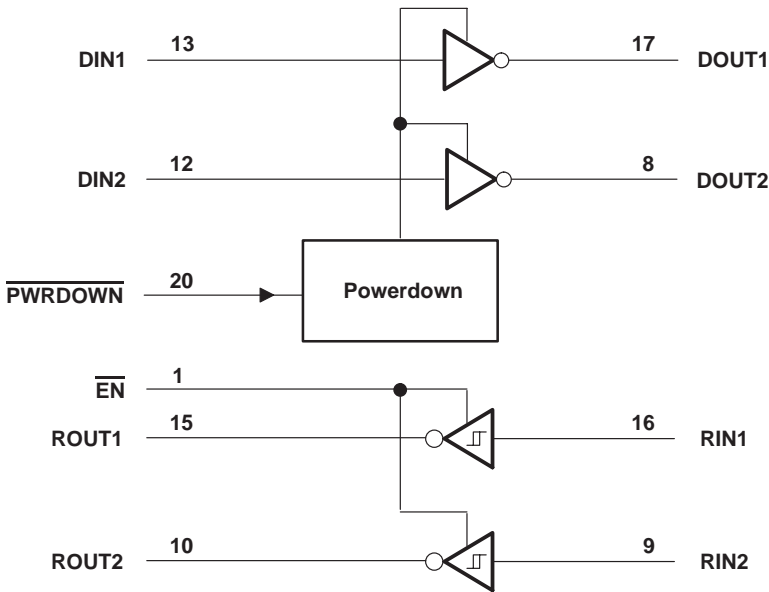
H = high level, L = low level, X = irrelevant,
Z = high impedance

EACH RECEIVER

| INPUTS | | OUTPUT ROUT |
|--------|------------------------|----------------|
| RIN | $\overline{\text{EN}}$ | |
| L | L | H |
| H | L | L |
| X | H | Z |
| Open | L | H |

H = high level, L = low level, X = irrelevant,
Z = high impedance (off), Open = input
disconnected or connected driver off

logic diagram (positive logic)



SN65C3222, SN75C3222

3-V TO 5.5-V MULTICHANNEL RS-232 COMPATIBLE LINE DRIVER/RECEIVER

SLLS534B – MAY 2002 – REVISED OCTOBER 2004

absolute maximum ratings over operating free-air temperature range (unless otherwise noted)[†]

| | |
|--|----------------------------|
| Supply voltage range, V_{CC} (see Note 1) | –0.3 V to 6 V |
| Positive output supply voltage range, $V+$ (see Note 1) | –0.3 V to 7 V |
| Negative output supply voltage range, $V-$ (see Note 1) | 0.3 V to –7 V |
| Supply voltage difference, $V+ - V-$ (see Note 1) | 13 V |
| Input voltage range, V_I : Drivers, \overline{EN} , $\overline{PWRDOWN}$ | –0.3 V to 6 V |
| Receivers | –25 V to 25 V |
| Output voltage range, V_O : Drivers | –13.2 V to 13.2 V |
| Receivers | –0.3 V to $V_{CC} + 0.3$ V |
| Package thermal impedance, θ_{JA} (see Notes 2 and 3): DB package | 70°C/W |
| DW package | 58°C/W |
| PW package | 83°C/W |
| Operating virtual junction temperature, T_J | 150°C |
| Storage temperature range, T_{stg} | –65°C to 150°C |

[†] Stresses beyond those listed under “absolute maximum ratings” may cause permanent damage to the device. These are stress ratings only, and functional operation of the device at these or any other conditions beyond those indicated under “recommended operating conditions” is not implied. Exposure to absolute-maximum-rated conditions for extended periods may affect device reliability.

- NOTES: 1. All voltages are with respect to network GND.
2. Maximum power dissipation is a function of $T_J(\text{max})$, θ_{JA} , and T_A . The maximum allowable power dissipation at any allowable ambient temperature is $P_D = (T_J(\text{max}) - T_A)/\theta_{JA}$. Operating at the absolute maximum T_J of 150°C can affect reliability.
3. The package thermal impedance is calculated in accordance with JESD 51-7.

recommended operating conditions (see Note 4 and Figure 5)

| | | | MIN | NOM | MAX | UNIT |
|--|---|------------------|-----|-----|-----|------|
| Supply voltage | $V_{CC} = 3.3$ V | | 3 | 3.3 | 3.6 | V |
| | $V_{CC} = 5$ V | | 4.5 | 5 | 5.5 | |
| V_{IH} Driver and control high-level input voltage | \overline{DIN} , \overline{EN} , $\overline{PWRDOWN}$ | $V_{CC} = 3.3$ V | 2 | | | V |
| | | $V_{CC} = 5$ V | 2.4 | | | |
| V_{IL} Driver and control low-level input voltage | \overline{DIN} , \overline{EN} , $\overline{PWRDOWN}$ | | | | 0.8 | V |
| V_I Driver and control input voltage | \overline{DIN} , \overline{EN} , $\overline{PWRDOWN}$ | | 0 | | 5.5 | V |
| V_I Receiver input voltage | | | –25 | | 25 | V |
| T_A Operating free-air temperature | SN65C3222 | | –40 | | 85 | °C |
| | SN75C3222 | | 0 | | 70 | |

NOTE 4: Test conditions are C1–C4 = 0.1 μ F at $V_{CC} = 3.3$ V \pm 0.3 V; C1 = 0.047 μ F, C2–C4 = 0.33 μ F at $V_{CC} = 5$ V \pm 0.5 V.

electrical characteristics over recommended ranges of supply voltage and operating free-air temperature (unless otherwise noted) (see Note 4 and Figure 5)

| PARAMETER | | TEST CONDITIONS | MIN | TYP [‡] | MAX | UNIT |
|-----------|--|---|-----|------------------|---------|---------|
| I_I | Input leakage current (\overline{EN} , $\overline{PWRDOWN}$) | | | ± 0.01 | ± 1 | μ A |
| I_{CC} | Supply current | No load, $\overline{PWRDOWN}$ at V_{CC} | | 0.3 | 1 | mA |
| | Supply current (powered off) | No load, $\overline{PWRDOWN}$ at GND | | 1 | 10 | μ A |

[‡] All typical values are at $V_{CC} = 3.3$ V or $V_{CC} = 5$ V, and $T_A = 25^\circ\text{C}$.

NOTE 4: Test conditions are C1–C4 = 0.1 μ F at $V_{CC} = 3.3$ V \pm 0.3 V; C1 = 0.047 μ F, C2–C4 = 0.33 μ F at $V_{CC} = 5$ V \pm 0.5 V.



SN65C3222, SN75C3222

3-V TO 5.5-V MULTICHANNEL RS-232 COMPATIBLE LINE DRIVER/RECEIVER

SLLS534B – MAY 2002 – REVISED OCTOBER 2004

DRIVER SECTION

electrical characteristics over recommended ranges of supply voltage and operating free-air temperature (unless otherwise noted) (see Note 4 and Figure 5)

| PARAMETER | TEST CONDITIONS | MIN | TYP† | MAX | UNIT |
|---|---|--|-------|-----|------|
| V _{OH} High-level output voltage | DOUT at R _L = 3 kΩ to GND, DIN = GND | 5 | 5.4 | | V |
| V _{OL} Low-level output voltage | DOUT at R _L = 3 kΩ to GND, DIN = V _{CC} | –5 | –5.4 | | V |
| I _{IH} High-level input current | V _I = V _{CC} | | ±0.01 | ±1 | μA |
| I _{IL} Low-level input current | V _I at GND | | ±0.01 | ±1 | μA |
| I _{OS} Short-circuit output current‡ | V _{CC} = 3.6 V, V _O = 0 V | | ±35 | ±60 | mA |
| | V _{CC} = 5.5 V, V _O = 0 V | | ±35 | ±90 | |
| r _o Output resistance | V _{CC} , V+, and V– = 0 V, V _O = ±2 V | 300 | 10M | | Ω |
| I _{off} Output leakage current | PWRDOWN = GND | V _O = ±12 V, V _{CC} = 3 V to 3.6 V | | ±25 | μA |
| | | V _O = ±10 V, V _{CC} = 4.5 V to 5.5 V | | ±25 | |

† All typical values are at V_{CC} = 3.3 V or V_{CC} = 5 V, and T_A = 25°C.

‡ Short-circuit durations should be controlled to prevent exceeding the device absolute power-dissipation ratings, and not more than one output should be shorted at a time.

NOTE 4: Test conditions are C1–C4 = 0.1 μF at V_{CC} = 3.3 V ± 0.3 V; C1 = 0.047 μF, C2–C4 = 0.33 μF at V_{CC} = 5 V ± 0.5 V.

switching characteristics over recommended ranges of supply voltage and operating free-air temperature (unless otherwise noted) (see Note 4 and Figure 4)

| PARAMETER | TEST CONDITIONS | MIN | TYP† | MAX | UNIT |
|--|---|--|------|-----|--------|
| Maximum data rate (see Figure 1) | R _L = 3 kΩ, One DOUT switching | C _L = 1000 pF | 250 | | kbit/s |
| | | C _L = 250 pF, V _{CC} = 3 V to 4.5 V | 1000 | | |
| | | C _L = 1000 pF, V _{CC} = 4.5 V to 5.5 V | 1000 | | |
| t _{sk(p)} Pulse skew§ | C _L = 150 pF to 2500 pF | R _L = 3 kΩ to 7 kΩ, See Figure 2 | 300 | | ns |
| SR(tr) Slew rate, transition region (see Figure 1) | R _L = 3 kΩ to 7 kΩ, V _{CC} = 3.3 V | C _L = 150 pF to 1000 pF | 18 | 150 | V/μs |

† All typical values are at V_{CC} = 3.3 V or V_{CC} = 5 V, and T_A = 25°C.

§ Pulse skew is defined as |t_{pLH} – t_{pHL}| of each channel of the same device.

NOTE 4: Test conditions are C1–C4 = 0.1 μF at V_{CC} = 3.3 V ± 0.3 V; C1 = 0.047 μF, C2–C4 = 0.33 μF at V_{CC} = 5 V ± 0.5 V.



SN65C3222, SN75C3222

3-V TO 5.5-V MULTICHANNEL RS-232 COMPATIBLE LINE DRIVER/RECEIVER

SLLS534B – MAY 2002 – REVISED OCTOBER 2004

RECEIVER SECTION

electrical characteristics over recommended ranges of supply voltage and operating free-air temperature (unless otherwise noted) (see Note 4 and Figure 5)

| PARAMETER | TEST CONDITIONS | MIN | TYP† | MAX | UNIT |
|--|---------------------------------|-------------------------|-------------------------|-----|------|
| V _{OH} High-level output voltage | I _{OH} = -1 mA | V _{CC} - 0.6 V | V _{CC} - 0.1 V | | V |
| V _{OL} Low-level output voltage | I _{OL} = 1.6 mA | | | 0.4 | V |
| V _{IT+} Positive-going input threshold voltage | V _{CC} = 3.3 V | | 1.5 | 2.4 | V |
| | V _{CC} = 5 V | | 1.8 | 2.4 | |
| V _{IT-} Negative-going input threshold voltage | V _{CC} = 3.3 V | 0.6 | 1.2 | | V |
| | V _{CC} = 5 V | 0.8 | 1.5 | | |
| V _{hys} Input hysteresis (V _{IT+} - V _{IT-}) | | | 0.3 | | V |
| I _{off} Output leakage current | $\overline{\text{EN}} = V_{CC}$ | | ±0.05 | ±10 | μA |
| r _i Input resistance | V _I = ±3 V to ±25 V | 3 | 5 | 7 | kΩ |

† All typical values are at V_{CC} = 3.3 V or V_{CC} = 5 V, and T_A = 25°C.

NOTE 4: Test conditions are C1–C4 = 0.1 μF at V_{CC} = 3.3 V ± 0.3 V; C1 = 0.047 μF, C2–C4 = 0.33 μF at V_{CC} = 5 V ± 0.5 V.

switching characteristics over recommended ranges of supply voltage and operating free-air temperature (unless otherwise noted) (see Note 4)

| PARAMETER | TEST CONDITIONS | MIN | TYP† | MAX | UNIT |
|--|--|-----|------|-----|------|
| t _{PLH} Propagation delay time, low- to high-level output | C _L = 150 pF, See Figure 3 | | 300 | | ns |
| t _{PHL} Propagation delay time, high- to low-level output | C _L = 150 pF, See Figure 3 | | 300 | | ns |
| t _{en} Output enable time | C _L = 150 pF, R _L = 3 kΩ, See Figure 4 | | 200 | | ns |
| t _{dis} Output disable time | C _L = 150 pF, R _L = 3 kΩ, See Figure 4 | | 200 | | ns |
| t _{sk(p)} Pulse skew‡ | See Figure 3 | | 300 | | ns |

† All typical values are at V_{CC} = 3.3 V or V_{CC} = 5 V, and T_A = 25°C.

‡ Pulse skew is defined as |t_{PLH} - t_{PHL}| of each channel of the same device.

NOTE 4: Test conditions are C1–C4 = 0.1 μF at V_{CC} = 3.3 V ± 0.3 V; C1 = 0.047 μF, C2–C4 = 0.33 μF at V_{CC} = 5 V ± 0.5 V.

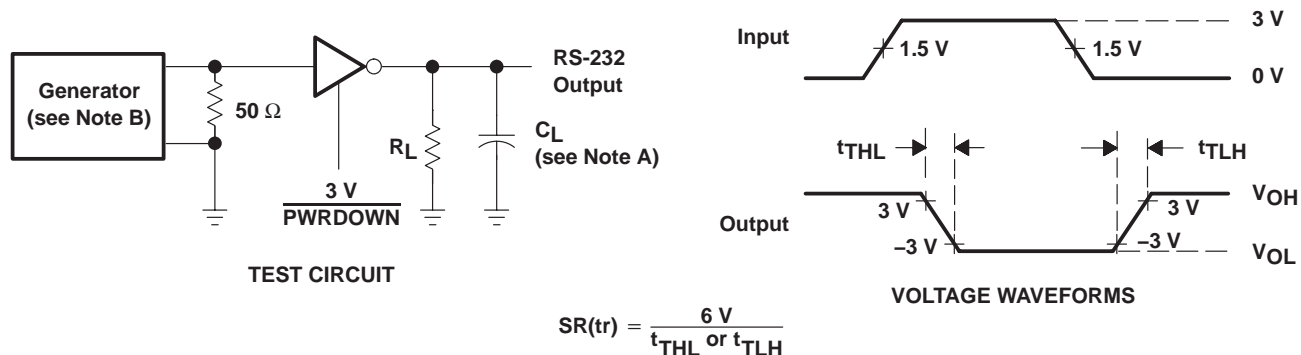


SN65C3222, SN75C3222

3-V TO 5.5-V MULTICHANNEL RS-232 COMPATIBLE LINE DRIVER/RECEIVER

SLLS534B – MAY 2002 – REVISED OCTOBER 2004

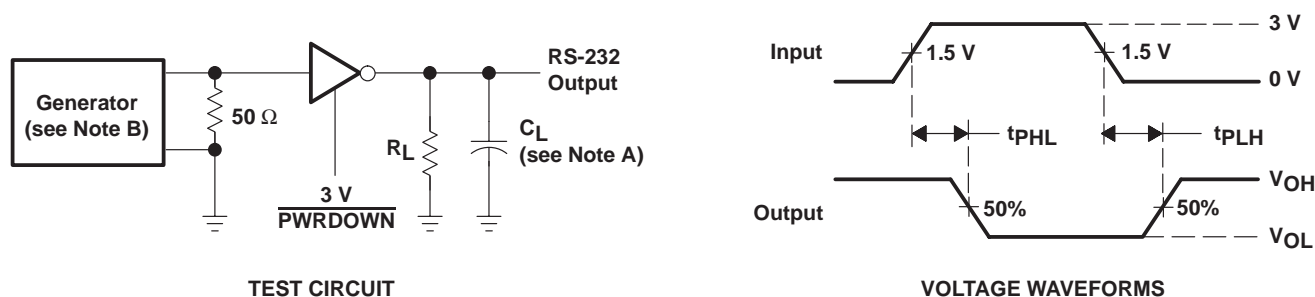
PARAMETER MEASUREMENT INFORMATION



NOTES: A. C_L includes probe and jig capacitance.

B. The pulse generator has the following characteristics: PRR = 250 kbit/s, $Z_O = 50\ \Omega$, 50% duty cycle, $t_r \leq 10\text{ ns}$, $t_f \leq 10\text{ ns}$.

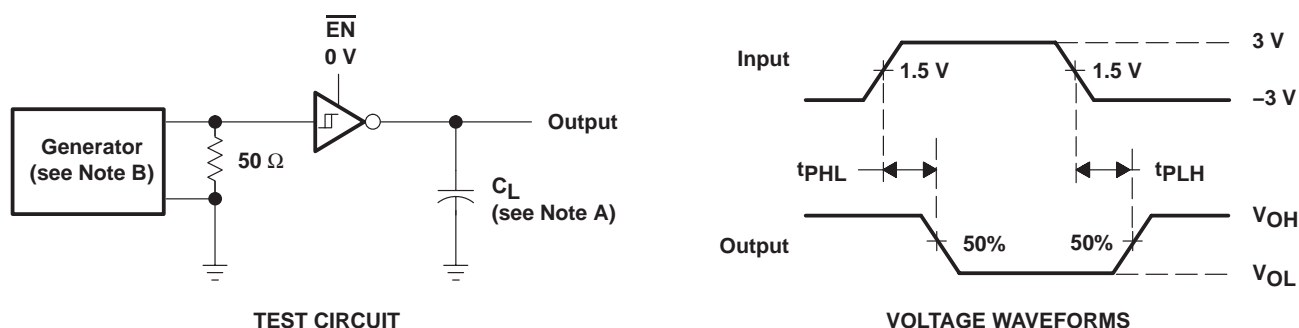
Figure 1. Driver Slew Rate



NOTES: A. C_L includes probe and jig capacitance.

B. The pulse generator has the following characteristics: PRR = 250 kbit/s, $Z_O = 50\ \Omega$, 50% duty cycle, $t_r \leq 10\text{ ns}$, $t_f \leq 10\text{ ns}$.

Figure 2. Driver Pulse Skew



NOTES: A. C_L includes probe and jig capacitance.

B. The pulse generator has the following characteristics: $Z_O = 50\ \Omega$, 50% duty cycle, $t_r \leq 10\text{ ns}$, $t_f \leq 10\text{ ns}$.

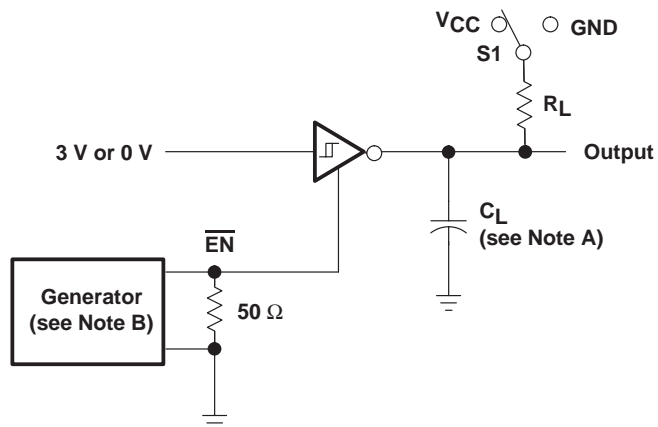
Figure 3. Receiver Propagation-Delay Times

SN65C3222, SN75C3222

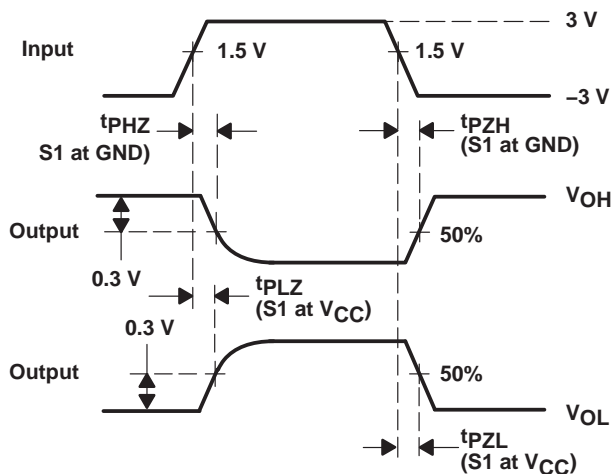
3-V TO 5.5-V MULTICHANNEL RS-232 COMPATIBLE LINE DRIVER/RECEIVER

SLLS534B – MAY 2002 – REVISED OCTOBER 2004

PARAMETER MEASUREMENT INFORMATION



TEST CIRCUIT



VOLTAGE WAVEFORMS

NOTES: A. C_L includes probe and jig capacitance.

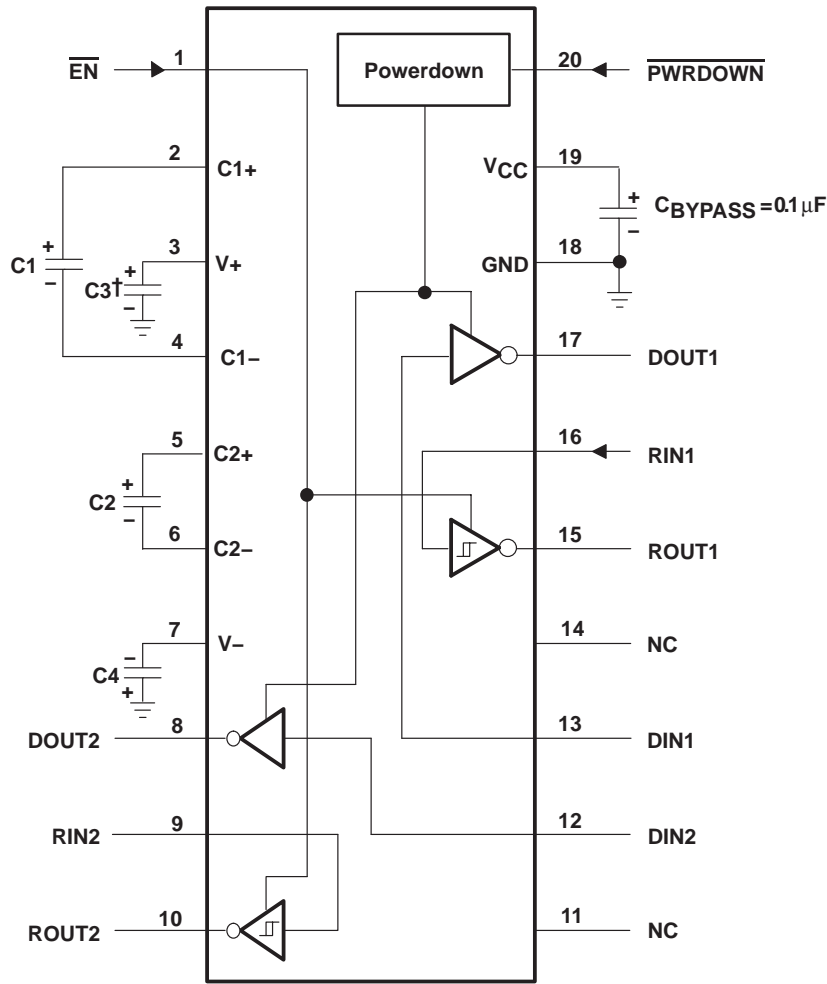
B. The pulse generator has the following characteristics: $Z_O = 50 \Omega$, 50% duty cycle, $t_r \leq 10 \text{ ns}$, $t_f \leq 10 \text{ ns}$.

Figure 4. Receiver Enable and Disable Times

SN65C3222, SN75C3222
3-V TO 5.5-V MULTICHANNEL RS-232 COMPATIBLE LINE DRIVER/RECEIVER

SLLS534B – MAY 2002 – REVISED OCTOBER 2004

APPLICATION INFORMATION



† C3 can be connected to V_{CC} or GND.
NOTES: A. Resistor values shown are nominal.
B. NC – No internal connection

| V _{CC} vs CAPACITOR VALUES | | |
|-------------------------------------|----------|----------------|
| V _{CC} | C1 | C2, C3, and C4 |
| 3.3 V ± 0.3 V | 0.1 μF | 0.1 μF |
| 5 V ± 0.5 V | 0.047 μF | 0.33 μF |
| 3 V to 5.5 V | 0.1 μF | 0.47 μF |

Figure 5. Typical Operating Circuit and Capacitor Values

DW (R-PDSO-G20)

PLASTIC SMALL-OUTLINE PACKAGE



4040000-4/F 06/2004

- NOTES:
- All linear dimensions are in inches (millimeters).
 - This drawing is subject to change without notice.
 - Body dimensions do not include mold flash or protrusion not to exceed 0.006 (0,15).
 - Falls within JEDEC MS-013 variation AC.

DB (R-PDSO-G**)

PLASTIC SMALL-OUTLINE

28 PINS SHOWN



- NOTES: A. All linear dimensions are in millimeters.
 B. This drawing is subject to change without notice.
 C. Body dimensions do not include mold flash or protrusion not to exceed 0,15.
 D. Falls within JEDEC MO-150

PW (R-PDSO-G**)

PLASTIC SMALL-OUTLINE PACKAGE

14 PINS SHOWN



- NOTES: A. All linear dimensions are in millimeters.
 B. This drawing is subject to change without notice.
 C. Body dimensions do not include mold flash or protrusion not to exceed 0,15.
 D. Falls within JEDEC MO-153

IMPORTANT NOTICE

Texas Instruments Incorporated and its subsidiaries (TI) reserve the right to make corrections, modifications, enhancements, improvements, and other changes to its products and services at any time and to discontinue any product or service without notice. Customers should obtain the latest relevant information before placing orders and should verify that such information is current and complete. All products are sold subject to TI's terms and conditions of sale supplied at the time of order acknowledgment.

TI warrants performance of its hardware products to the specifications applicable at the time of sale in accordance with TI's standard warranty. Testing and other quality control techniques are used to the extent TI deems necessary to support this warranty. Except where mandated by government requirements, testing of all parameters of each product is not necessarily performed.

TI assumes no liability for applications assistance or customer product design. Customers are responsible for their products and applications using TI components. To minimize the risks associated with customer products and applications, customers should provide adequate design and operating safeguards.

TI does not warrant or represent that any license, either express or implied, is granted under any TI patent right, copyright, mask work right, or other TI intellectual property right relating to any combination, machine, or process in which TI products or services are used. Information published by TI regarding third-party products or services does not constitute a license from TI to use such products or services or a warranty or endorsement thereof. Use of such information may require a license from a third party under the patents or other intellectual property of the third party, or a license from TI under the patents or other intellectual property of TI.

Reproduction of information in TI data books or data sheets is permissible only if reproduction is without alteration and is accompanied by all associated warranties, conditions, limitations, and notices. Reproduction of this information with alteration is an unfair and deceptive business practice. TI is not responsible or liable for such altered documentation.

Resale of TI products or services with statements different from or beyond the parameters stated by TI for that product or service voids all express and any implied warranties for the associated TI product or service and is an unfair and deceptive business practice. TI is not responsible or liable for any such statements.

Following are URLs where you can obtain information on other Texas Instruments products and application solutions:

| Products | | Applications | |
|------------------|--|---------------------|--|
| Amplifiers | amplifier.ti.com | Audio | www.ti.com/audio |
| Data Converters | dataconverter.ti.com | Automotive | www.ti.com/automotive |
| DSP | dsp.ti.com | Broadband | www.ti.com/broadband |
| Interface | interface.ti.com | Digital Control | www.ti.com/digitalcontrol |
| Logic | logic.ti.com | Military | www.ti.com/military |
| Power Mgmt | power.ti.com | Optical Networking | www.ti.com/opticalnetwork |
| Microcontrollers | microcontroller.ti.com | Security | www.ti.com/security |
| | | Telephony | www.ti.com/telephony |
| | | Video & Imaging | www.ti.com/video |
| | | Wireless | www.ti.com/wireless |

Mailing Address: Texas Instruments
Post Office Box 655303 Dallas, Texas 75265

Copyright © 2004, Texas Instruments Incorporated

Copyright © Each Manufacturing Company.

All Datasheets cannot be modified without permission.

This datasheet has been download from :

www.AllDataSheet.com

100% Free DataSheet Search Site.

Free Download.

No Register.

Fast Search System.

www.AllDataSheet.com