



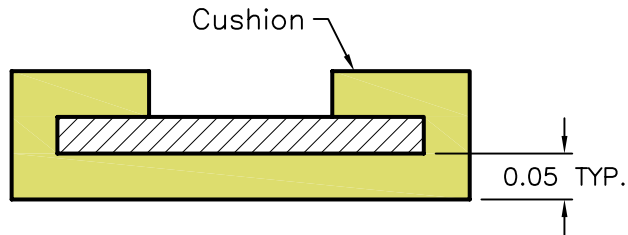
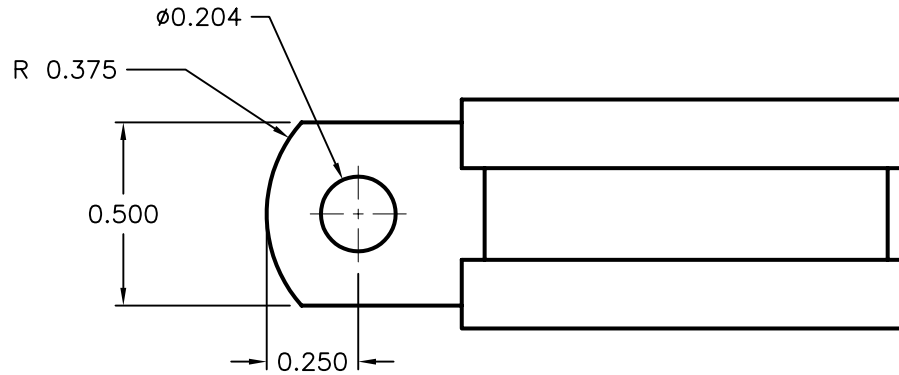
ALL RIGHTS RESERVED. NO PORTION OF THIS PUBLICATION, WHETHER IN WHOLE OR IN PART CAN BE REPRODUCED WITHOUT THE EXPRESS WRITTEN CONSENT OF SPC TECHNOLOGY.

SPC-F005.DWG

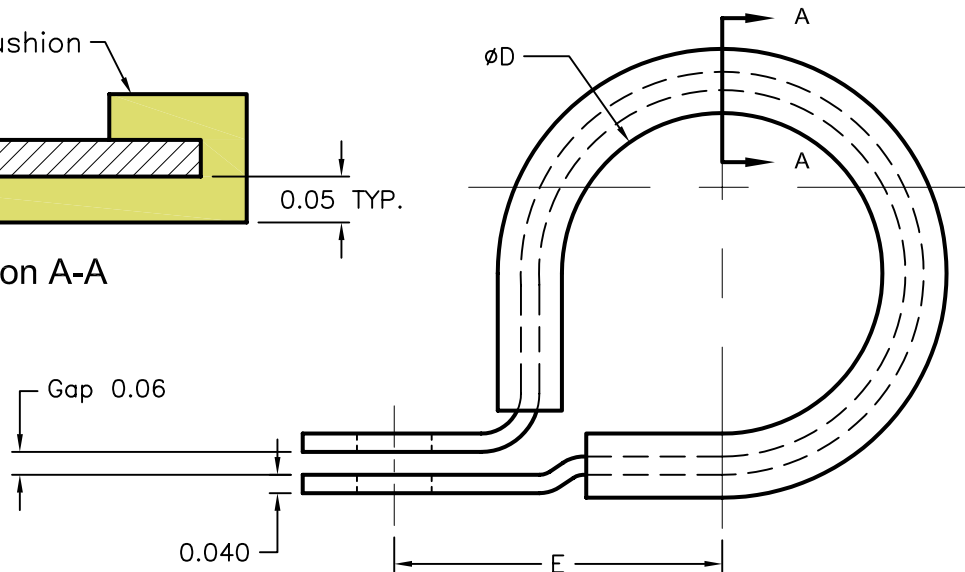
REVISIONS

DOC. NO. SPC-F005 * Effective: 7/8/02 * DCP No: 1398

DCP #	REV	DESCRIPTION	DRAWN	DATE	CHECKD	DATE	APPRVD	DATE
1247	A	RELEASED	HYO	10/12/01	JWM	10/12/01	DJC	10/12/01
1889	B	Updated To RoHS Compliant	EO	3/1/06	HO	3/1/06	HO	3/1/06



Section A-A



SPC Type No.	ØD ±0.02	E DIM. ±0.03
SPC11144	0.250	0.540
SPC11145	0.313	0.571
SPC11146	0.375	0.603
SPC11147	0.437	0.634
SPC11148	0.500	0.665
SPC11149	0.625	0.770
SPC11150	0.750	0.832
SPC11151	1.000	0.957

SPECIFICATIONS:

1. METAL: STAINLESS STEEL 300 SERIES
2. CUSHION: SILICONE PER AMS3303, COLOR RED

DISCLAIMER:
ALL STATEMENTS AND TECHNICAL INFORMATION CONTAINED HEREIN ARE BASED UPON INFORMATION AND/OR TESTS WE BELIEVE TO BE ACCURATE AND RELIABLE. SINCE CONDITIONS OF USE ARE BEYOND OUR CONTROL, THE USER SHALL DETERMINE THE SUITABILITY OF THE PRODUCT FOR THE INTENDED USE AND ASSUME ALL RISK AND LIABILITY WHATSOEVER IN CONNECTION THEREWITH.

TOLERANCES:
UNLESS OTHERWISE
SPECIFIED
.XX ±0.030
.XXX ±0.010

DRAWN BY:	DATE:
HISHAM ODISH	10/12/01
CHECKED BY:	DATE:
JEFF MCVICKER	10/12/01
APPROVED BY:	DATE:
DANIEL CAREY	10/12/01

DRAWING TITLE: RoHS Compliant Cushion Stainless Steel Cable Clamp			
SIZE A	DWG. NO. TA-430	ELECTRONIC FILE TA-430.DWG	REV B
SCALE: NTS	U.O.M.: INCHES	SHEET: 1 OF 1	