



SRN3 THRU SRN7

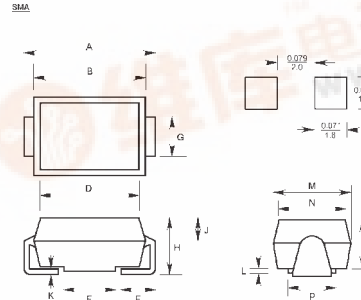
SURFACE MOUNT FAST SWITCHING RECTIFIER

Reverse Voltage - 50 to 600 Volts

Forward Current - 1.0 Ampere

Features

- For surface mounted applications
- Low profile package
- Built-in strain relief
- Easy pick and place
- Fast recovery times for high efficiency
- Plastic package has Underwriters Laboratory Flammability Classification 94V-0
- High temperature soldering: 260°C/10 seconds at terminals



Mechanical Data

- **Case:** SMA molded plastic
- **Terminals:** Solder plated solderable per MIL-STD-750, method 2026
- **Polarity:** Indicated by cathode band
- **Weight:** 0.004 ounce, 0.113 gram

DIM	inches		mm		Note
	Min.	Max.	Min.	Max.	
A	0.216	0.226	5.48	5.74	
B	0.176	0.182	4.48	4.63	
C	0.094	0.100	2.40	2.55	
D	0.170	0.176	4.33	4.48	
E	0.039	0.055	1.00	1.40	
F	0.080	0.081	2.03	2.07	
G	0.068	0.083	1.72	2.10	
H	0.112	0.118	2.85	3.00	
J	0.057	-	1.44	-	
K	-	0.018	-	0.45	
L	0.016	-	0.40	-	
M	0.109	0.115	2.77	2.93	
N	0.105	0.107	2.67	2.73	
P	0.078	0.081	2.00	2.05	

Maximum Ratings and Electrical Characteristics

Ratings at 25°C ambient temperature unless otherwise specified.

Resistive or inductive load.

For capacitive load, derate current by 20%.

	Symbols	SRN3	SRN4	SRN5	SRN6	SRN7	Units
Maximum repetitive peak reverse voltage	V_{RRM}	50	100	200	400	600	Volts
Maximum RMS voltage	V_{RMS}	35	70	140	280	420	Volts
Maximum DC blocking voltage	V_{DC}	50	100	200	400	600	Volts
Maximum average forward rectified current at $T_c=90^\circ\text{C}$	I_{AV}	1.0					Amp
Peak forward surge current 8.3mS single half sine-wave superimposed on rated load (MIL-STD-750D 4066 method)	I_{FSM}	30.0					Amps
Maximum instantaneous forward voltage at 1.0A	V_F	1.3					Volts
Maximum DC reverse current at rated DC blocking voltage $T_c=25^\circ\text{C}$ $T_A=125^\circ\text{C}$	I_R	5.0 300.0					μA
Maximum reverse recovery time (Note 1) $T_j=25^\circ\text{C}$	T_{rr}	150			250	500	nS
Typical junction capacitance (Note 2)	C_j	10.0					μF
Maximum thermal resistance (Note 3)	$R_{\theta JL}$	30.0					$^\circ\text{C/W}$
Operating and storage temperature range	T_j, T_{STG}	-50 to +150					$^\circ\text{C}$

Notes:

(1) Reverse recovery test conditions: $I_r=0.5\text{A}$, $I_f=1.0\text{A}$, $I_s=0.25\text{A}$

(2) Measured at 1.0MHz and applied reverse voltage of 4.0 volts



RATINGS AND CHARACTERISTIC CURVES

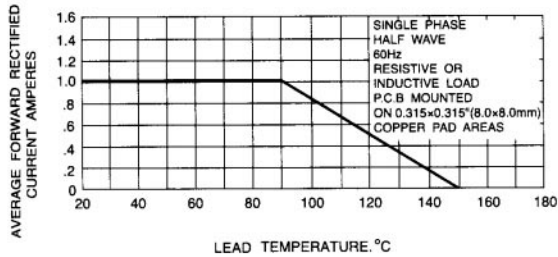


Fig. 1 - FORWARD CURRENT DERATING CURVE

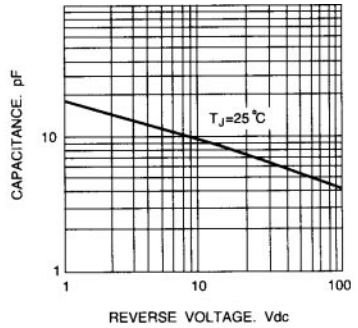


Fig. 2 - TYPICAL JUNCTION CAPACITANCE

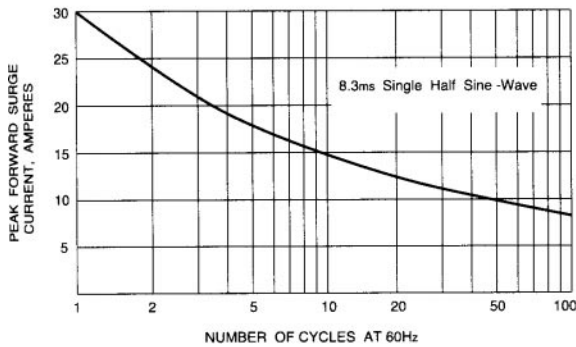


Fig. 3 - PEAK FORWARD SURGE CURRENT

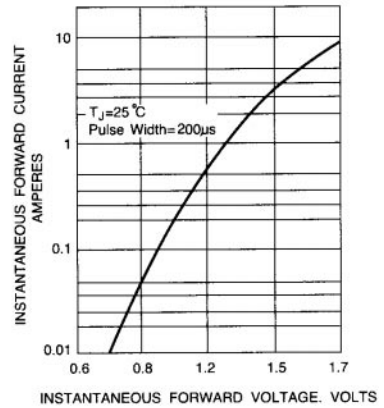


Fig. 4 - TYPICAL FORWARD CHARACTERISTICS

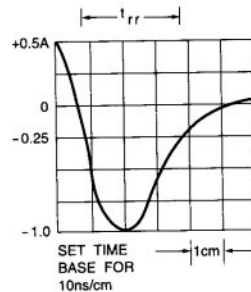
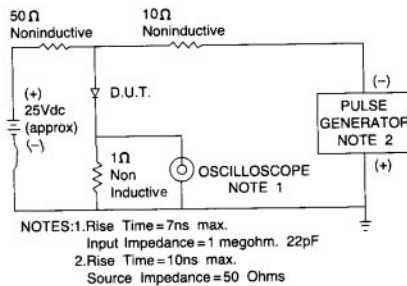


Fig. 5 - REVERSE RECOVERY TIME CHARACTERISTIC AND TEST CIRCUIT DIAGRAM