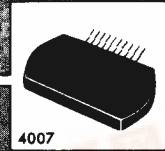


**STK-075,077,  
078,080,082,  
083**

thick film hybrid IC

15 to 40W min AF POWER AMP



4007

**Features**

- © IMST, 1 Channel by 2 Power Supplies.
- AF output power STK-075: 15W min., STK-077: 20W min., STK-078: 24W min., STK-080: 30W min., STK-082: 35W min. STK-083: 40W min.
- Differential amp. constant current driving.
- Capable of tone controlling.
- STK-078-105 and STK-082-105 are for the use of  $T_C=105^{\circ}C$ .

**MAXIMUM RATINGS /  $T_a=25^{\circ}C$**

	STK-075	STK-077	STK-078	STK-080	STK-082	STK-083	unit
Maximum Supply Voltage $V_{CCmax}$	$\pm 28$	$\pm 32$	$\pm 35$	$\pm 39$	$\pm 43$	$\pm 46$	V
Operating Case Temperature $T_C$	$\rightarrow$	$\rightarrow$	$\rightarrow$	$\rightarrow$	85	90	$^{\circ}C$
Storage Temperature $T_{stg}$	$\rightarrow$	$\rightarrow$	$\rightarrow$	$\rightarrow$	$\rightarrow$	$\rightarrow$	$-30$ to $+100^{\circ}C$
Allowable Load Shorting Time (in appointed condition) $t_s$	$\rightarrow$	$\rightarrow$	$\rightarrow$	$\rightarrow$	$\rightarrow$	2	sec

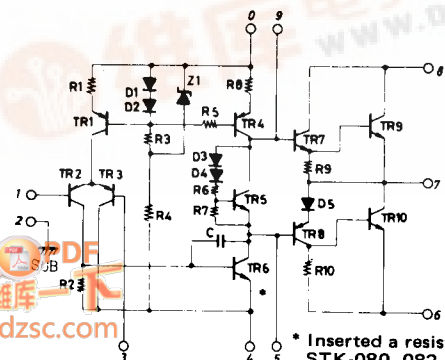
**RECOMMENDED OPERATION CONDITION /  $T_a=25^{\circ}C$**

	STK-075	STK-077	STK-078	STK-080	STK-082	STK-083	unit
Recommended Supply Voltage $V_{CC}$	$\pm 20$	$\pm 22$	$\pm 25$	$\pm 27$	$\pm 30$	$\pm 32$	V
Load Resistance $R_L$	$\rightarrow$	$\rightarrow$	$\rightarrow$	$\rightarrow$	$\rightarrow$	8	ohm

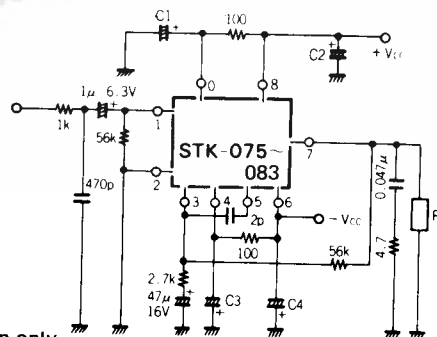
**OPERATION CHARACTERISTICS /  $T_a=25^{\circ}C$ , recommended operating condition,  $R_g=600$  ohm,  $V_G=26.4$  dB**

	STK-075	STK-077	STK-078	STK-080	STK-082	STK-083	unit
Quiescent Current $I_{cco}$	$\rightarrow$	$\rightarrow$	$\rightarrow$	$\rightarrow$	$\rightarrow$	$\rightarrow$	100mA max
Output Power $P_o(1)$ THD=0.3%, $f=20$ to 20kHz	15	20	-	-	-	-	Wmin
$P_o(2)$ THD=0.2%, $f=20$ to 20kHz	-	-	24	30	35	40	Wmin
Distortion THD $f=20$ to 20kHz, rated output power	0.3	0.3	0.2	0.2	0.2	0.2	%max
Frequency Response $f$ $P_o=1W, -1dB$	$\rightarrow$	$\rightarrow$	$\rightarrow$	$\rightarrow$	$\rightarrow$	$\rightarrow$	10 to 100k Hz
Input Resistance $r_i$ $P_o=1W, f=1kHz$	$\rightarrow$	$\rightarrow$	$\rightarrow$	$\rightarrow$	$\rightarrow$	$\rightarrow$	52k ohm

**EQUIVALENT CIRCUIT**



**APPLICATION**



	STK-075, 77, 78	STK-080, 82, 83
C1	220 $\mu$ /35V	220 $\mu$ /50V
C2	10 $\mu$ /35V	10 $\mu$ /50V
C3	220 $\mu$ /35V	220 $\mu$ /50V
C4	10 $\mu$ /35V	10 $\mu$ /50V

See the operation characteristics on this specification.

