

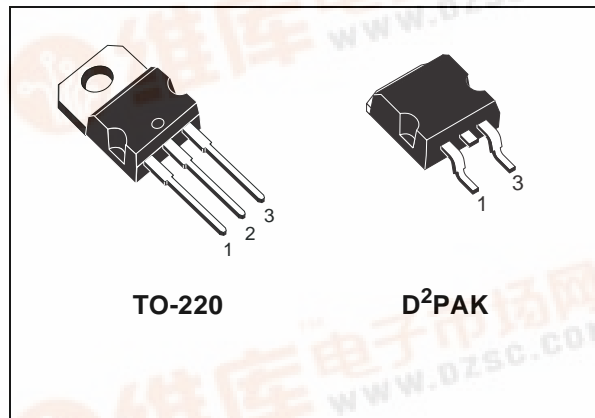


STP35NF10 STB35NF10

N-CHANNEL 100V - 0.030Ω - 40A TO-220 / D²PAK LOW GATE CHARGE STripFET™ POWER MOSFET

TYPE	V _{DSS}	R _{DS(on)}	I _D
STP35NF10	100 V	< 0.035 Ω	40 A
STB35NF10	100 V	< 0.035 Ω	40 A

- TYPICAL R_{DS(on)} = 0.030Ω
- EXCEPTIONAL dv/dt CAPABILITY
- 100% AVALANCHE TESTED
- APPLICATION ORIENTED CHARACTERIZATION

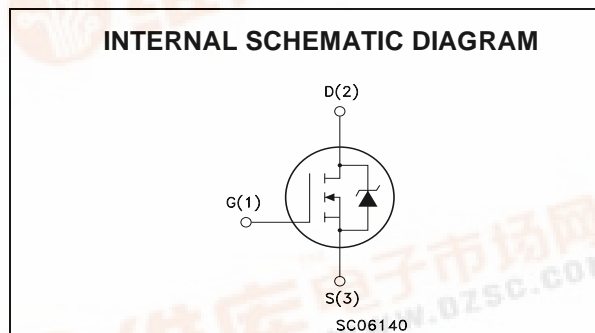


DESCRIPTION

This Power Mosfet series realized with STMicroelectronics unique STripFET process has specifically been designed to minimize input capacitance and gate charge. It is therefore suitable as primary switch in advanced high-efficiency isolated DC-DC converters for Telecom and Computer application. It is also intended for any application with low gate charge drive requirements.

APPLICATIONS

- HIGH-EFFICIENCY DC-DC CONVERTERS
- UPS AND MOTOR CONTROL



ABSOLUTE MAXIMUM RATINGS

Symbol	Parameter	Value	Unit
V _{DS}	Drain-source Voltage (V _{GS} = 0)	100	V
V _{DGR}	Drain-gate Voltage (R _{GS} = 20 kΩ)	100	V
V _{GS}	Gate- source Voltage	±20	V
I _D	Drain Current (continuous) at T _C = 25°C	40	A
I _D	Drain Current (continuous) at T _C = 100°C	28	A
I _{DM} (●)	Drain Current (pulsed)	160	A
P _{TOT}	Total Dissipation at T _C = 25°C	115	W
	Derating Factor	0.77	W/°C
dv/dt (1)	Peak Diode Recovery voltage slope	13	V/ns
E _{AS} (2)	Single Pulse Avalanche Energy	300	mJ
T _{stg}	Storage Temperature	- 55 to 175	°C
T _j	Operating Junction Temperature		

(●) Pulse width limited by safe operating area

(1) I_{SD} ≤ 35A, di/dt ≤ 300A/μs, V_{DD} ≤ V(BR)DSS, T_j ≤ T_{JMAX}.
 (2) Starting T_j = 25°C, I_D = 20A, V_{DD} = 80V



STP35NF10 - STB35NF10

THERMAL DATA

Rthj-case	Thermal Resistance Junction-case Max	1.30	°C/W
Rthj-amb	Thermal Resistance Junction-ambient Max	62.5	°C/W
T _I	Maximum Lead Temperature For Soldering Purpose	300	°C

ELECTRICAL CHARACTERISTICS (TCASE = 25 °C UNLESS OTHERWISE SPECIFIED)

OFF

Symbol	Parameter	Test Conditions	Min.	Typ.	Max.	Unit
V _{(BR)DSS}	Drain-source Breakdown Voltage	I _D = 250 μA, V _{GS} = 0	100			V
I _{DSS}	Zero Gate Voltage Drain Current (V _{GS} = 0)	V _{DS} = Max Rating V _{DS} = Max Rating, T _C = 125 °C			1 10	μA μA
I _{GSS}	Gate-body Leakage Current (V _{DS} = 0)	V _{GS} = ±20V			±100	nA

ON (1)

Symbol	Parameter	Test Conditions	Min.	Typ.	Max.	Unit
V _{GS(th)}	Gate Threshold Voltage	V _{DS} = V _{GS} , I _D = 250μA	2	3	4	V
R _{DS(on)}	Static Drain-source On Resistance	V _{GS} = 10V, I _D = 17.5 A		0.030	0.035	Ω

DYNAMIC

Symbol	Parameter	Test Conditions	Min.	Typ.	Max.	Unit
g _{fs} (1)	Forward Transconductance	V _{DS} = 15V, I _D = 17.5 A		20		S
C _{iss}	Input Capacitance	V _{DS} = 25V, f = 1 MHz, V _{GS} = 0		1550		pF
C _{oss}	Output Capacitance			220		pF
C _{rss}	Reverse Transfer Capacitance			95		pF

ELECTRICAL CHARACTERISTICS (CONTINUED)

SWITCHING ON

Symbol	Parameter	Test Conditions	Min.	Typ.	Max.	Unit
$t_{d(on)}$	Turn-on Delay Time	$V_{DD} = 50V, I_D = 17.5 A$		17		ns
t_r	Rise Time	$R_G = 4.7\Omega, V_{GS} = 10V$ (see test circuit, Figure 3)		60		ns
Q_g	Total Gate Charge	$V_{DD} = 80V, I_D = 35A, V_{GS} = 10V$		55		nC
Q_{gs}	Gate-Source Charge			12		nC
Q_{gd}	Gate-Drain Charge			20		nC

SWITCHING OFF

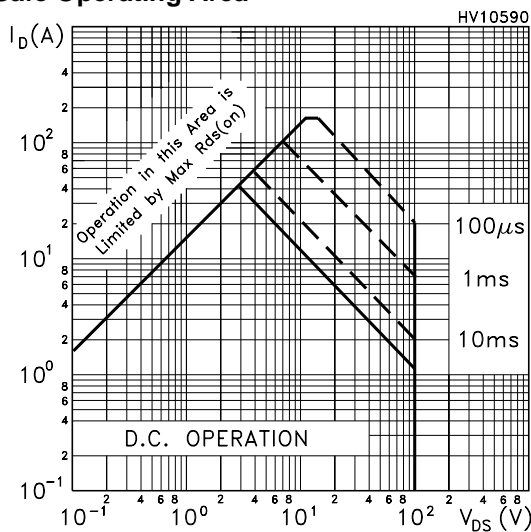
Symbol	Parameter	Test Conditions	Min.	Typ.	Max.	Unit
$t_{d(off)}$	Turn-off-Delay Time	$V_{DD} = 50V, I_D = 17.5 A,$		60		ns
t_f	Fall Time	$R_G = 4.7\Omega, V_{GS} = 10V$ (see test circuit, Figure 3)		15		ns

SOURCE DRAIN DIODE

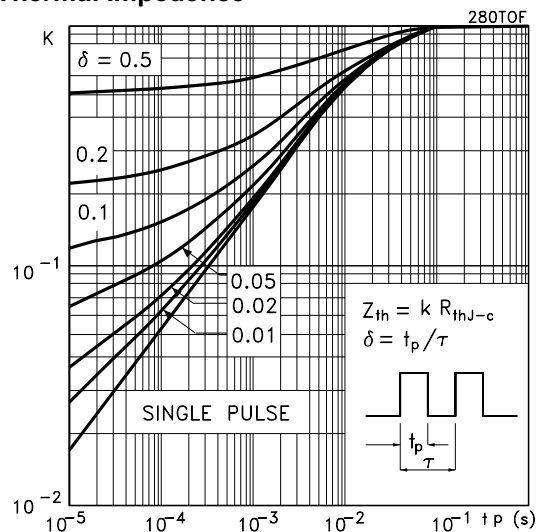
Symbol	Parameter	Test Conditions	Min.	Typ.	Max.	Unit
I_{SD}	Source-drain Current				40	A
$I_{SDM(2)}$	Source-drain Current (pulsed)				160	A
$V_{SD(1)}$	Forward On Voltage	$I_{SD} = 35 A, V_{GS} = 0$			1.5	V
t_{rr}	Reverse Recovery Time	$I_{SD} = 35 A, di/dt = 100A/\mu s,$		160		ns
Q_{rr}	Reverse Recovery Charge	$V_{DD} = 25V, T_j = 150^\circ C$		720		nC
I_{RRM}	Reverse Recovery Current	(see test circuit, Figure 5)		9		A

Note: 1. Pulsed: Pulse duration = 300 μs , duty cycle 1.5 %.
2. Pulse width limited by safe operating area.

Safe Operating Area

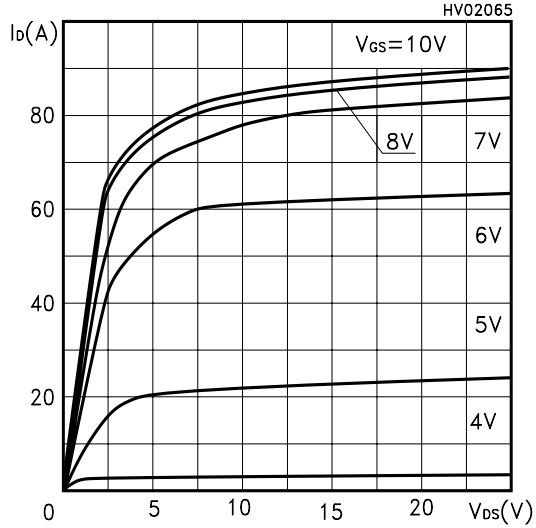


Thermal Impedence

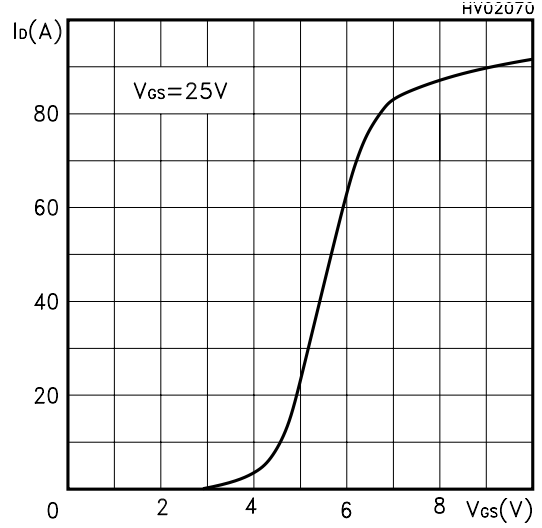


STP35NF10 - STB35NF10

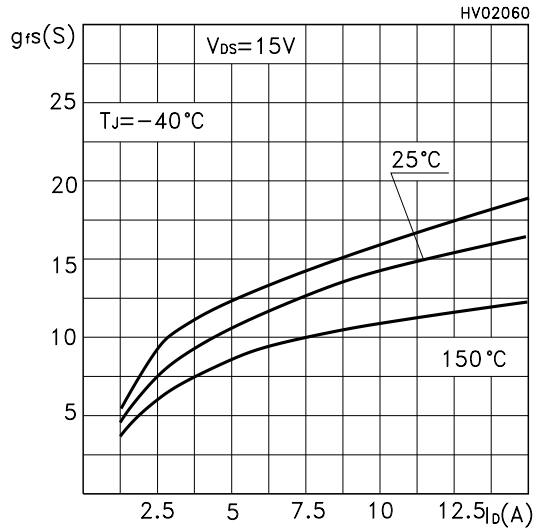
Output Characteristics



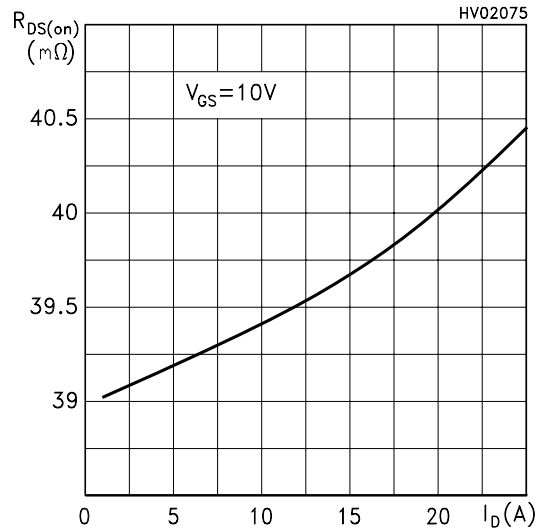
Transfer Characteristics



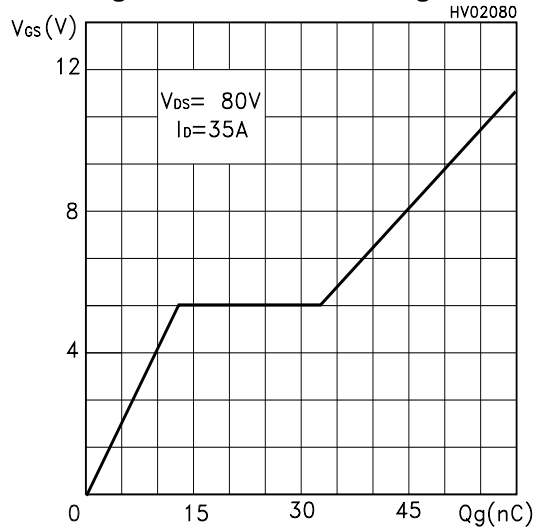
Transconductance



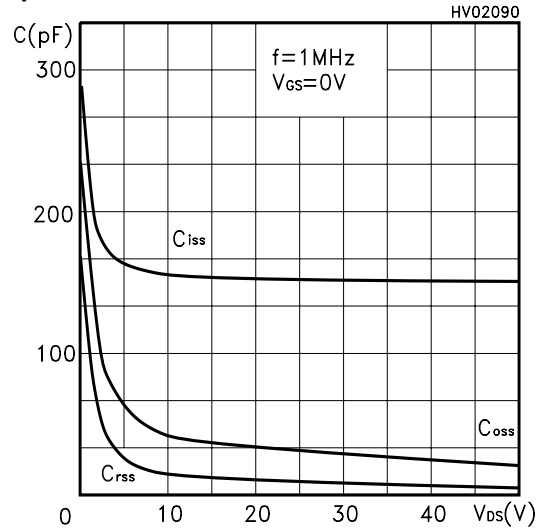
Static Drain-source On Resistance



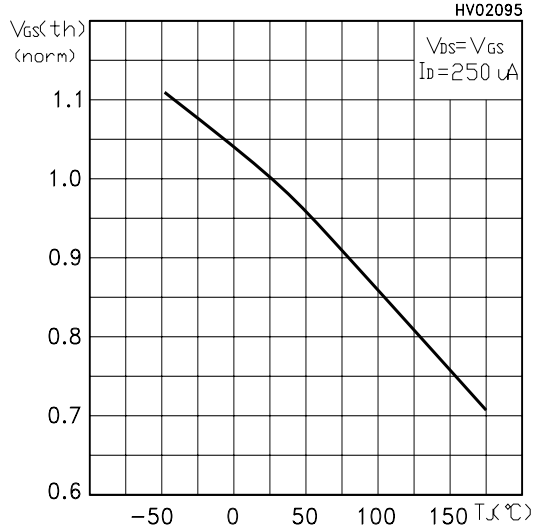
Gate Charge vs Gate-source Voltage



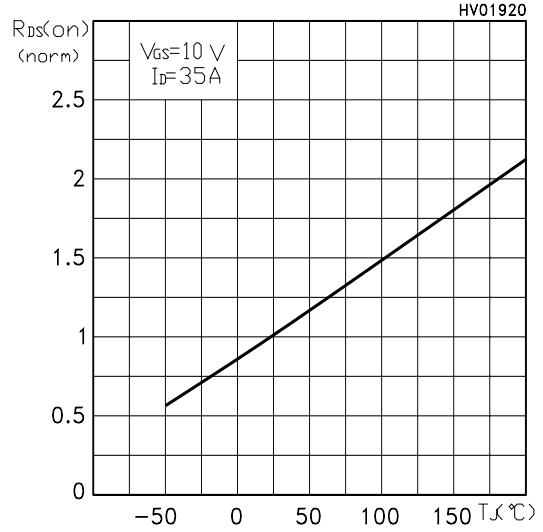
Capacitance Variations



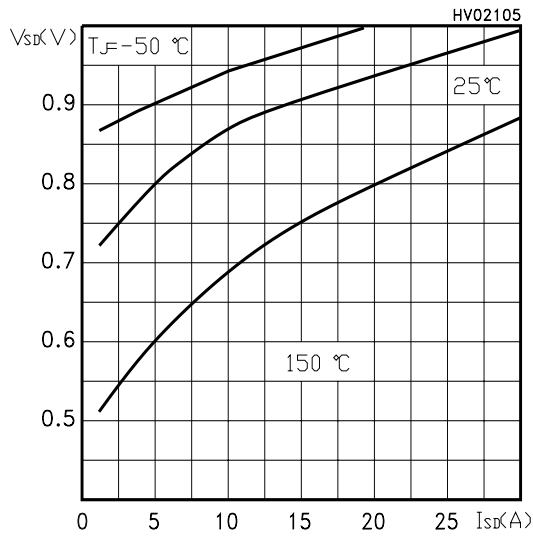
Normalized Gate Threshold Voltage vs Temp.



Normalized On Resistance vs Temperature



Source-drain Diode Forward Characteristics



STP35NF10 - STB35NF10

Fig. 1: Unclamped Inductive Load Test Circuit

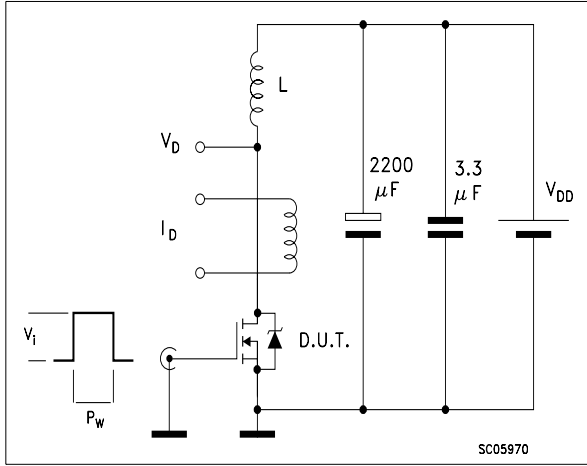


Fig. 2: Unclamped Inductive Waveform

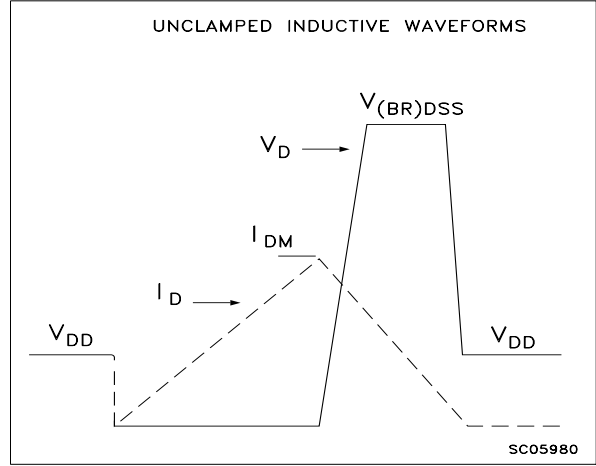


Fig. 3: Switching Times Test Circuit For Resistive Load

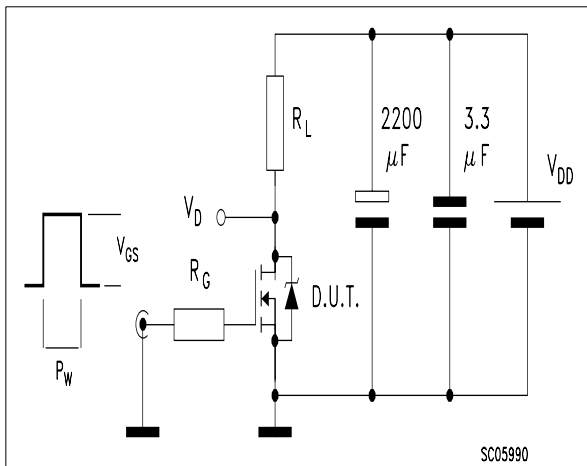


Fig. 4: Gate Charge test Circuit

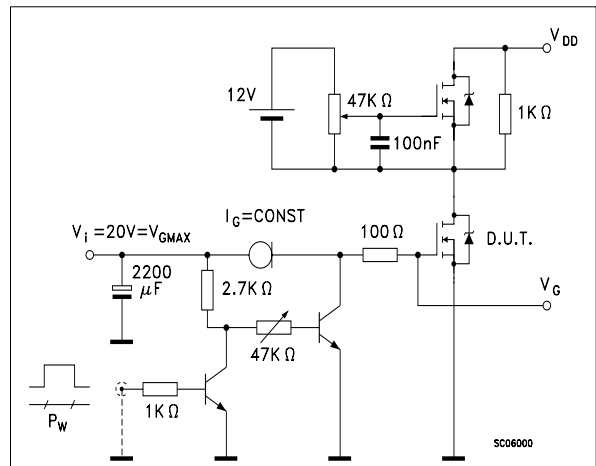
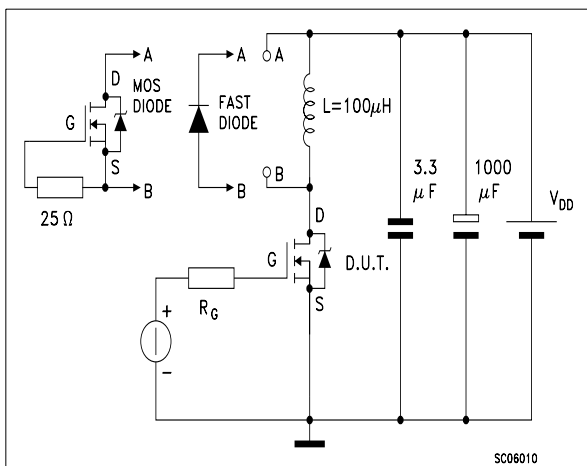
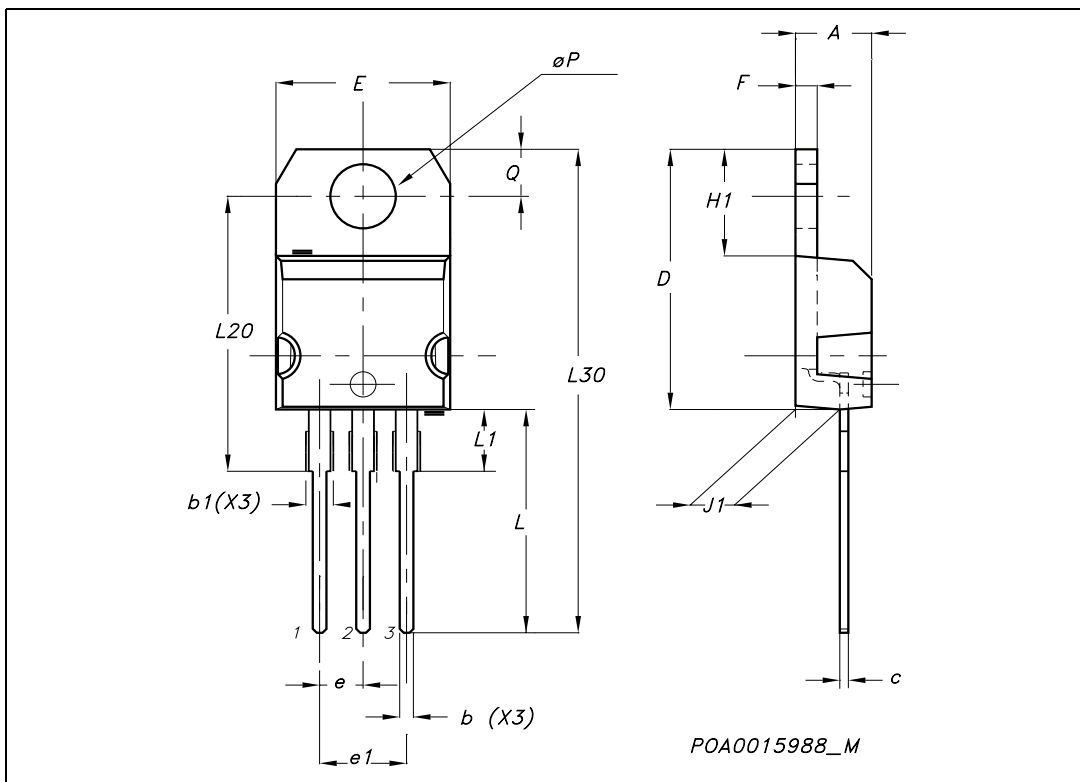


Fig. 5: Test Circuit For Inductive Load Switching And Diode Recovery Times



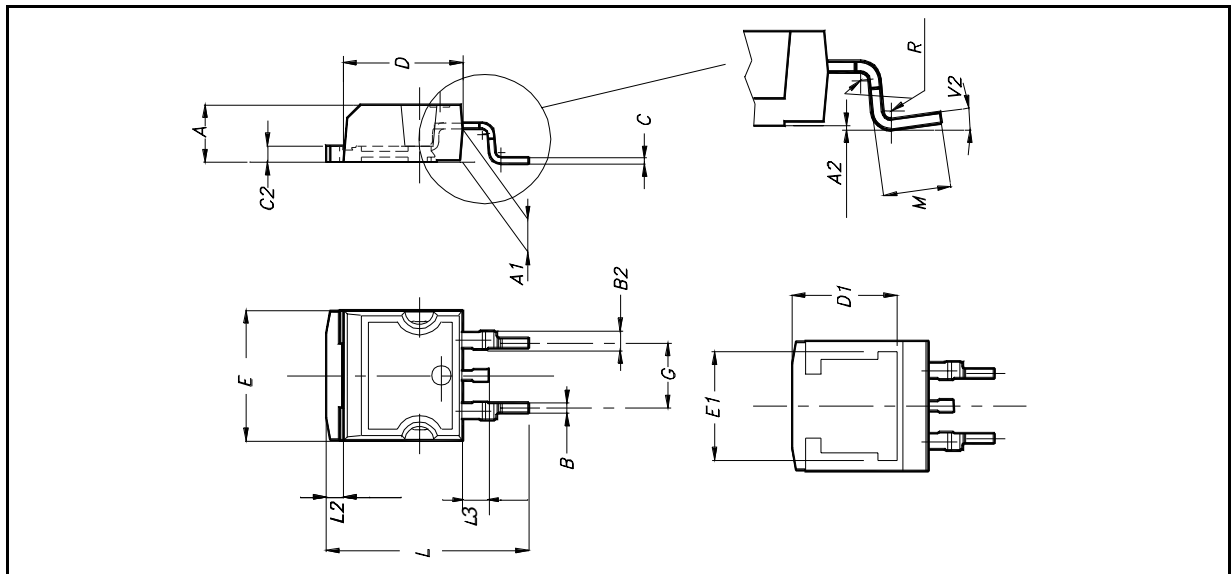
TO-220 MECHANICAL DATA

DIM.	mm.			inch		
	MIN.	TYP.	MAX.	MIN.	TYP.	MAX.
A	4.40		4.60	0.173		0.181
b	0.61		0.88	0.024		0.034
b1	1.15		1.70	0.045		0.066
c	0.49		0.70	0.019		0.027
D	15.25		15.75	0.60		0.620
E	10		10.40	0.393		0.409
e	2.40		2.70	0.094		0.106
e1	4.95		5.15	0.194		0.202
F	1.23		1.32	0.048		0.052
H1	6.20		6.60	0.244		0.256
J1	2.40		2.72	0.094		0.107
L	13		14	0.511		0.551
L1	3.50		3.93	0.137		0.154
L20		16.40			0.645	
L30		28.90			1.137	
øP	3.75		3.85	0.147		0.151
Q	2.65		2.95	0.104		0.116

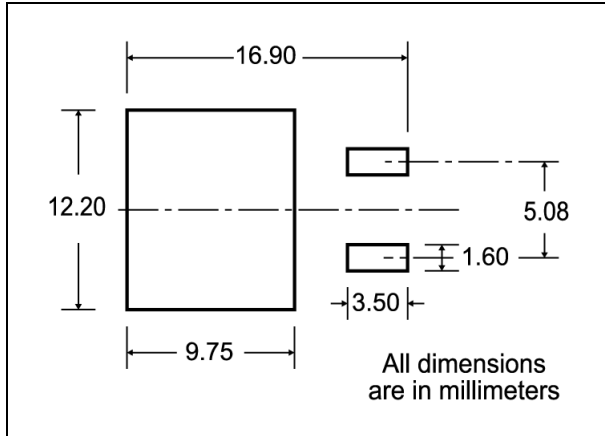


D²PAK MECHANICAL DATA

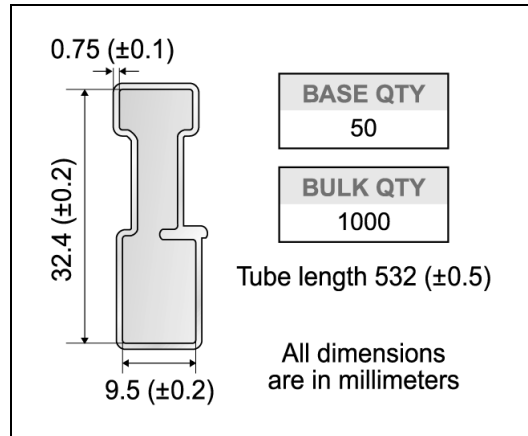
DIM.	mm.			inch		
	MIN.	TYP.	MAX.	MIN.	TYP.	MAX.
A	4.4		4.6	0.173		0.181
A1	2.49		2.69	0.098		0.106
A2	0.03		0.23	0.001		0.009
B	0.7		0.93	0.027		0.036
B2	1.14		1.7	0.044		0.067
C	0.45		0.6	0.017		0.023
C2	1.23		1.36	0.048		0.053
D	8.95		9.35	0.352		0.368
D1		8			0.315	
E	10		10.4	0.393		
E1		8.5			0.334	
G	4.88		5.28	0.192		0.208
L	15		15.85	0.590		0.625
L2	1.27		1.4	0.050		0.055
L3	1.4		1.75	0.055		0.068
M	2.4		3.2	0.094		0.126
R		0.4			0.015	
V2	0°		8°			



D²PAK FOOTPRINT



TUBE SHIPMENT (no suffix)*



TAPE AND REEL SHIPMENT (suffix "T4")*

Diagram showing the tape mechanical data. The tape has a width of 2.5 mm. The distance between the centers of the mounting holes is 20.2 mm. The distance from the center of the mounting holes to the edge of the tape is 1.5 mm. The distance from the center of the mounting holes to the edge of the tape is 1.6 mm. The distance from the center of the mounting holes to the edge of the tape is 1.59 mm. The distance from the center of the mounting holes to the edge of the tape is 1.65 mm. The distance from the center of the mounting holes to the edge of the tape is 11.4 mm. The distance from the center of the mounting holes to the edge of the tape is 11.6 mm. The distance from the center of the mounting holes to the edge of the tape is 4.8 mm. The distance from the center of the mounting holes to the edge of the tape is 5.0 mm. The distance from the center of the mounting holes to the edge of the tape is 3.9 mm. The distance from the center of the mounting holes to the edge of the tape is 4.1 mm. The distance from the center of the mounting holes to the edge of the tape is 11.9 mm. The distance from the center of the mounting holes to the edge of the tape is 12.1 mm. The distance from the center of the mounting holes to the edge of the tape is 1.9 mm. The distance from the center of the mounting holes to the edge of the tape is 2.1 mm. The distance from the center of the mounting holes to the edge of the tape is 50 mm. The distance from the center of the mounting holes to the edge of the tape is 1.574 mm. The distance from the center of the mounting holes to the edge of the tape is 0.25 mm. The distance from the center of the mounting holes to the edge of the tape is 0.35 mm. The distance from the center of the mounting holes to the edge of the tape is 0.0098 mm. The distance from the center of the mounting holes to the edge of the tape is 0.0137 mm. The distance from the center of the mounting holes to the edge of the tape is 23.7 mm. The distance from the center of the mounting holes to the edge of the tape is 24.3 mm. The distance from the center of the mounting holes to the edge of the tape is 0.933 mm. The distance from the center of the mounting holes to the edge of the tape is 0.956 mm.

TAPE MECHANICAL DATA

DIM.	mm		inch	
	MIN.	MAX.	MIN.	MAX.
A0	10.5	10.7	0.413	0.421
B0	15.7	15.9	0.618	0.626
D	1.5	1.6	0.059	0.063
D1	1.59	1.61	0.062	0.063
E	1.65	1.85	0.065	0.073
F	11.4	11.6	0.449	0.456
K0	4.8	5.0	0.189	0.197
P0	3.9	4.1	0.153	0.161
P1	11.9	12.1	0.468	0.476
P2	1.9	2.1	0.075	0.082
R	50		1.574	
T	0.25	0.35	0.0098	0.0137
W	23.7	24.3	0.933	0.956

REEL MECHANICAL DATA

DIM.	mm		inch	
	MIN.	MAX.	MIN.	MAX.
A		330		12.992
B	1.5		0.059	
C	12.8	13.2	0.504	0.520
D	20.2		0.795	
G	24.4	26.4	0.960	1.039
N	100		3.937	
T		30.4		1.197

BASE QTY
1000

BULK QTY
1000

Diagram showing the reel mechanical data. The reel has a diameter of 330 mm. The distance between the centers of the mounting holes is 20.2 mm. The distance from the center of the mounting holes to the edge of the reel is 1.5 mm. The distance from the center of the mounting holes to the edge of the reel is 1.6 mm. The distance from the center of the mounting holes to the edge of the reel is 1.59 mm. The distance from the center of the mounting holes to the edge of the reel is 1.65 mm. The distance from the center of the mounting holes to the edge of the reel is 11.4 mm. The distance from the center of the mounting holes to the edge of the reel is 11.6 mm. The distance from the center of the mounting holes to the edge of the reel is 4.8 mm. The distance from the center of the mounting holes to the edge of the reel is 5.0 mm. The distance from the center of the mounting holes to the edge of the reel is 3.9 mm. The distance from the center of the mounting holes to the edge of the reel is 4.1 mm. The distance from the center of the mounting holes to the edge of the reel is 11.9 mm. The distance from the center of the mounting holes to the edge of the reel is 12.1 mm. The distance from the center of the mounting holes to the edge of the reel is 1.9 mm. The distance from the center of the mounting holes to the edge of the reel is 2.1 mm. The distance from the center of the mounting holes to the edge of the reel is 50 mm. The distance from the center of the mounting holes to the edge of the reel is 1.574 mm. The distance from the center of the mounting holes to the edge of the reel is 0.25 mm. The distance from the center of the mounting holes to the edge of the reel is 0.35 mm. The distance from the center of the mounting holes to the edge of the reel is 0.0098 mm. The distance from the center of the mounting holes to the edge of the reel is 0.0137 mm. The distance from the center of the mounting holes to the edge of the reel is 23.7 mm. The distance from the center of the mounting holes to the edge of the reel is 24.3 mm. The distance from the center of the mounting holes to the edge of the reel is 0.933 mm. The distance from the center of the mounting holes to the edge of the reel is 0.956 mm.

TRAILER (TRL)

Diagram showing the trailer (TRL) dimensions. The trailer has a width of 23.7 mm and a height of 24.3 mm. The distance between the centers of the mounting holes is 20.2 mm. The distance from the center of the mounting holes to the edge of the trailer is 1.5 mm. The distance from the center of the mounting holes to the edge of the trailer is 1.6 mm. The distance from the center of the mounting holes to the edge of the trailer is 1.59 mm. The distance from the center of the mounting holes to the edge of the trailer is 1.65 mm. The distance from the center of the mounting holes to the edge of the trailer is 11.4 mm. The distance from the center of the mounting holes to the edge of the trailer is 11.6 mm. The distance from the center of the mounting holes to the edge of the trailer is 4.8 mm. The distance from the center of the mounting holes to the edge of the trailer is 5.0 mm. The distance from the center of the mounting holes to the edge of the trailer is 3.9 mm. The distance from the center of the mounting holes to the edge of the trailer is 4.1 mm. The distance from the center of the mounting holes to the edge of the trailer is 11.9 mm. The distance from the center of the mounting holes to the edge of the trailer is 12.1 mm. The distance from the center of the mounting holes to the edge of the trailer is 1.9 mm. The distance from the center of the mounting holes to the edge of the trailer is 2.1 mm. The distance from the center of the mounting holes to the edge of the trailer is 50 mm. The distance from the center of the mounting holes to the edge of the trailer is 1.574 mm. The distance from the center of the mounting holes to the edge of the trailer is 0.25 mm. The distance from the center of the mounting holes to the edge of the trailer is 0.35 mm. The distance from the center of the mounting holes to the edge of the trailer is 0.0098 mm. The distance from the center of the mounting holes to the edge of the trailer is 0.0137 mm. The distance from the center of the mounting holes to the edge of the trailer is 23.7 mm. The distance from the center of the mounting holes to the edge of the trailer is 24.3 mm. The distance from the center of the mounting holes to the edge of the trailer is 0.933 mm. The distance from the center of the mounting holes to the edge of the trailer is 0.956 mm.

Bending radius
R min.

* on sales type



Information furnished is believed to be accurate and reliable. However, STMicroelectronics assumes no responsibility for the consequences of use of such information nor for any infringement of patents or other rights of third parties which may result from its use. No license is granted by implication or otherwise under any patent or patent rights of STMicroelectronics. Specifications mentioned in this publication are subject to change without notice. This publication supersedes and replaces all information previously supplied. STMicroelectronics products are not authorized for use as critical components in life support devices or systems without express written approval of STMicroelectronics.

© The ST logo is a registered trademark of STMicroelectronics

© 2003 STMicroelectronics - Printed in Italy - All Rights Reserved
STMicroelectronics GROUP OF COMPANIES

Australia - Brazil - Canada - China - Finland - France - Germany - Hong Kong - India - Israel - Italy - Japan - Malaysia - Malta - Morocco
Singapore - Spain - Sweden - Switzerland - United Kingdom - United States.

© <http://www.st.com>