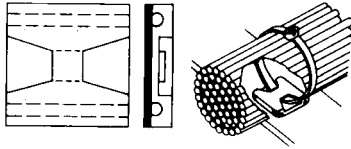


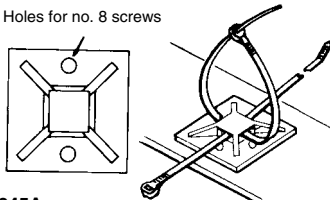
Cable Tie Mounting Bases



TC5342A

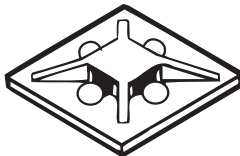
This nylon base is neutral in color, and for indoor use.

Holes for no. 8 screws



TC5345A

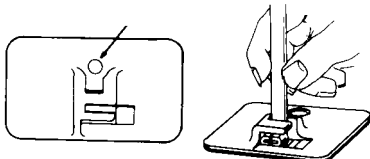
Accepting cable ties in four directions at 90°, this nylon, adhesive-backed base has two advantages. It eliminates errors in premounting the base with respect to its orientation to wire bundle direction. It also is a convenient way to mount wire bundles at cross-over points. Four optional mounting holes are included.



TC5344A

The four-way, pressure-sensitive, adhesive mounting base for use on cable ties up to .140 maximum width.

Hole for no. 6 screw



TC5353A

Mounting bases (adhesive backed, epoxy or screws)

Thomas & Betts has a mounting base or clamp to suit most applications and cable tie widths. For easier installation, some bases are available with pressure sensitive adhesive tape.

Features

- Available in a variety of materials for both indoor and outdoor use.
- One-piece molding – no loss of parts.
- Adhesive backed with pressure sensitive adhesive tape (where applicable).

Ordering Information

Adhesive Mounting Bases

Std. Cat. No.	Bulk Cat. No.	Mounting Method	Max. Tie Width Accom.	Length (in.)	Width (in.)	Material	Std. Pkg.	Bulk Pkg.
TC5342A	TC342A	Adhesive	.190	1.125	1.125	Nylon 6/6	100	1000
-	TC342A-X	Adhesive	.190	1.125	1.125	Weatherable nylon	-	1000
-	TC342	TC2PA	.190	1.125	1.125	Nylon 6/6	-	1000
-	TC342X	TC2PA	.190	1.125	1.125	Weatherable nylon	-	1000
-	TC342A-FR	Adhesive	.190	1.125	1.125	Flame-retardant nylon	-	1000

Four-Way Adhesive Mounting Base

Std. Cat. No.	Bulk Cat. No.	Mounting Method	Max. Tie Width Accom.	Length (in.)	Width (in.)	Material	Std. Pkg.	Bulk Pkg.
TC5345A	TC345A	Adhesive	.190	1.125	1.125	Nylon 6/6	100	1000
-	TC345AFR	Adhesive	.190	1.125	1.125	Flame-retardant	-	1000
-	TC345AX	Adhesive	.190	1.125	1.125	Weatherable nylon	-	1000
-	TC345	TC2PA/Screws	.190	1.125	1.125	Nylon 6/6	-	1000

Larger Size Four-Way Mini Base

Std. Cat. No.	Bulk Cat. No.	Mounting Method	Size (in.)	Material
TC050X050A	TC050X050A-C	Adhesive Backed	0.5 x 0.5	Nylon 6/6
TC150X150	TC150X150-L	Screw Mount	1.50 x 1.50	Nylon 6/6
TC150X150A	TC150X150A-L	Adhesive Backed	1.50 x 1.50	Nylon 6/6
TC200X200	TC200X200-L	Screw Mount	2.0 x 2.0	Nylon 6/6
TC200X200A	TC200X200A-L	Adhesive Backed	2.0 x 2.0	Nylon 6/6

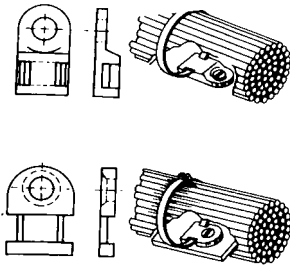
Four-Way Mini Base

Std. Cat. No.	Bulk Cat. No.	Mounting Method	Max. Tie Width Accom.	Length (in.)	Width (in.)	Material	Std. Pkg.	Bulk Pkg.
TC5344A	TC344A	Adhesive	.140	.750	.750	Nylon 6/6	100	1000
TC5344AX	TC344AX	Adhesive	.140	.750	.750	Weatherable Nylon	100	1000

Flexible Adhesive Base for Preassembled Ties

Std. Cat. No.	Bulk Cat. No.	Mounting Method	Max. Tie Width Accom.	Length (in.)	Width (in.)	Material	Std. Pkg.	Bulk Pkg.
TC5353A	TC353A	Adhesive	.190	2.000	1.000	Nylon 6/6	25	500
-	TC353	TC2PA/Screws	.190	2.000	1.000	Nylon 6/6	-	500

Cable Tie Mounting Bases

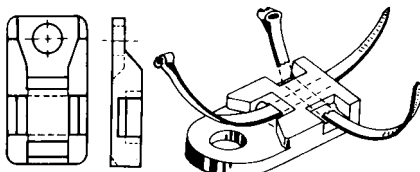


These miniature mounting bases are ideal for high-density packaging. Simply slip Ty-Rap® tie under slot in fastened mount, and complete tie in usual manner. Check chart for mounting details.

Miniature Mounting Bases

Std. Cat. No.	Bulk Pkg. Cat. No.	Mounting Method	Maximum Tie Width Accom.	Width (in.)	Length (in.)	Std. Pkg.	Bulk Pkg.
TC502	TC102	#8 screw	.190	.500	.750	100	1000
-	TC104	#5 screw	.091	.316	.406	-	1000
-	TC804	#2 screw	.091	.316	.406	-	1000
-	TC112-TB	#8 screw	.190	.375	.750	-	1000
-	TC812-TB	#10 screw	.190	.375	.750	-	1000
-	TC814-TB	#5 screw	.190	.375	.750	-	1000

Threaded insert permits screw to come from outside of mounting surface.



TC826-TB

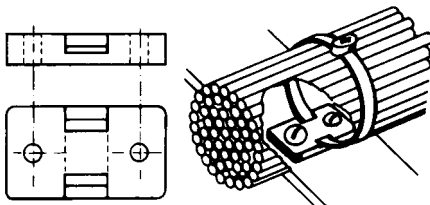
TC826-TB

Two-Direction Mounting Base

Std. Cat. No.	Bulk Pkg. Cat. No.	Mounting Method	Maximum Tie Width Accom.	Width (in.)	Length (in.)	Std. Pkg.	Bulk Pkg.
-	TC826-TB	#8 screw	.190	.500	1	-	1000
TC5828	TC828-TB	#8 screw	.190	.390	.875	100	1000

The TC826-TB mounting base can be used to tie bundles running parallel or perpendicular to length of base.

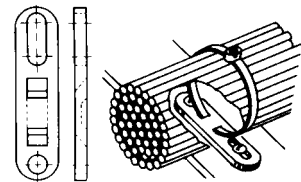
The TC828-TB mounting plate also handles ties installed in either direction and is somewhat smaller than TC826.



In-Line Base

Bulk Cat. No.	Mounting Method	Maximum Tie Width Accom.	Width (in.)	Length (in.)	Bulk Pkg.
TC815-TB	#10 screws	.301	.750	1.125	500

A standard two-hole base that installs in-line with the wire bundle which conceals it.



Single-Bundle Mounting Base

Std. Cat. No.	Bulk Cat. No.	Mounting Method	Maximum Tie Width Accom.	Width (in.)	Length (in.)	Std. Pkg.	Bulk Pkg.
-	TC101	#10 screws	.190	.500	2.00	-	1000
TC503	TC103	¼ screws	.301	.625	3.08	100	500

The TC101 and TC103 nylon bases provide a mounting range for bundles from 1/4" through 4" in diameter. One mounting hole is slotted to permit adjustment of the bundle position up to the time of actual bundle installation.