



TCN4040

PRECISION MICROPOWER SHUNT VOLTAGE REFERENCE

FEATURES

- Small Packages SOT-23B-3, TO-92, and SO-8
- Output Capacitor Not Required
- Handles Capacitive Loads
- Fixed Reverse Breakdown Voltage of 2.5V
- Low Output Noise
- Wide Operating Current Range (60 μ A to 15mA)
- - 40°C to + 85°C Operating Temperature Range

APPLICATIONS

- Portable, Battery-Powered Equipment
- Data Acquisition Systems
- Instrumentation
- Process Control
- Energy Management
- Product Testing
- Automotive
- Precision Audio Components

GENERAL DESCRIPTION

For applications in tight quarters, the TCN4040 precision voltage reference is available in a space-saving 3mm x 1.3mm SOT-23B-3 surface mount package. The TCN4040 eliminates the need for an external stabilizing capacitor while maintaining stability with any capacitive load. The minimum operating current is 60 μ A. The maximum operating current is 15mA.

To ensure that the prime parts have an accuracy of better than $\pm 0.5\%$ (C grade) at 25°C, the TCN4040 uses fuse and zener-zap reverse breakdown voltage trim during wafer sort. Low dynamic impedance and bandgap reference temperature drift curvature correction maintain stable reverse breakdown voltage accuracy over a wide range of operating temperatures (- 40°C to + 85°C) and currents from (60 μ A to 15mA).

The TCN4040 also is available in both adjustable and 1.2V versions.

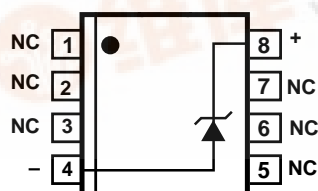
ORDERING INFORMATION

Part No.	Output Voltage (V)	Package	Voltage Tolerance Temp. Coefficient Grade
TCN4040C-2.5ENB	2.5	SOT-23B-3*	$\pm 0.5\%$, 100ppm/°C Max (C Grade)
TCN4040C-2.5EOA	2.5	8-Pin SOIC	$\pm 0.5\%$, 100ppm/°C Max (C Grade)
TCN4040C-2.5EZB	2.5	TO-92	$\pm 0.5\%$, 100ppm/°C Max (C Grade)
TCN4040D-2.5EOA	2.5	8-Pin SOIC	$\pm 1.0\%$, 150ppm/°C Max (D Grade)
TCN4040D-2.5ENB	2.5	SOT-23B-3*	$\pm 1.0\%$, 150ppm/°C Max (D Grade)
TCN4040D-2.5EZB	2.5	TO-92	$\pm 1.0\%$, 150ppm/°C Max (D Grade)
TCN4040E-2.5ENB	2.5	SOT-23B-3*	$\pm 2.0\%$, 150ppm/°C Max (E Grade)
TCN4040E-2.5EZB	2.5	TO-92	$\pm 2.0\%$, 150ppm/°C Max (E Grade)

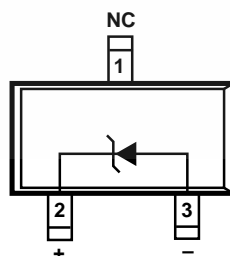
NOTE: *SOT-23B-3 is equivalent to the JEDEC (TO-236)

PIN CONFIGURATION

8-Pin SOIC

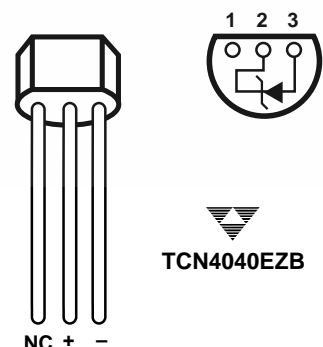


TCN4040EOA

SOT-23B-3*
(TOP VIEW)

TCN4040ENB

TO-92-3



TCN4040EZB

NOTE: *SOT-23B-3 is equivalent to the JEDEC (TO-236)

TCN4040

ABSOLUTE MAXIMUM RATINGS* (Note 1)

Reverse Current	20mA
Forward Current	10mA
Power Dissipation ($T_A = 25^\circ\text{C}$) (Note 2)	
SOT-23B-3 Package	230mW
TO-92 Package	440mW
SO-8 Package	470mW
Storage Temperature	-65°C to $+150^\circ\text{C}$
Lead Temperature (Soldering, 10 seconds)	
EOA	$+260^\circ\text{C}$
ENB	$+300^\circ\text{C}$
EZB	$+300^\circ\text{C}$

ESD Susceptibility

Human Body Model (Note 3)	2kV
Machine Model (Note 3)	200V

*Functional operation above the absolute maximum stress rating is not implied.

OPERATING RATINGS (NOTES 1 AND 2)

Temperature Range

($T_{\text{MIN}} \leq T_A \leq T_{\text{MAX}}$)	$-40^\circ\text{C} \leq T_A \leq +85^\circ\text{C}$
---	---

Reverse Current

TCN4040-2.5	.60 μA to 15mA
-------------	---------------------------

- NOTES:** 1. Absolute Maximum Ratings indicate limits beyond which damage to the device may occur. Operating Ratings indicate conditions for which the device is functional, but do not guarantee specific performance limits. For guaranteed specifications and test conditions, see *Electrical Characteristics*. The guaranteed specifications apply only for the test conditions listed. Some performance characteristics may degrade when the device is not operated under the listed test conditions.
2. The maximum power dissipation must be derated at elevated temperatures and is dictated by T_{JMAX} (maximum junction temperature), θ_{JA} (junction to ambient thermal resistance), and T_A (ambient temperature). The maximum allowable power dissipation at any temperature is $\text{PD}_{\text{MAX}} = (T_{\text{JMAX}} - T_A) / \theta_{\text{JA}}$ or the number given in Absolute Maximum Ratings, whichever is lower. For the TCN4040, $T_{\text{JMAX}} = 125^\circ\text{C}$, and the typical thermal resistance (θ_{JA}), when board mounted, is 185°C/W for the M package, 326°C/W for the SOT-23B-3 package, and 180°C/W with 0.4" lead length and 170°C/W with 0.125" lead length for the TO-92-3 package.
3. The human body model is a 100pF capacitor discharged through a 1.5k Ω resistor into each pin. The machine model is a 200pF capacitor discharged directly into each pin.

ELECTRICAL CHARACTERISTICS: **Boldface** type specifications apply for $T_A = T_J = T_{\text{MIN}}$ to T_{MAX} . All other specifications; $T_A = T_J = 25^\circ\text{C}$.

			TCN4040CEOA TCN4040CENB TCN4040CEZB			TCN4040DEOA TCN4040DENB TCN4040DEZB			TCN4040EENB TCN4040EEZB			Unit
Symbol	Parameter	Test Conditions	Min	Typ	Max	Min	Typ	Max	Min	Typ	Max	
V_R	Reverse Breakdown Voltage	$I_R = 100\mu\text{A}$ Notes 4, 5	—	2.500	—	—	2.500	—	—	2.500	—	V
	Reverse Breakdown Voltage Tolerance	$I_R = 100\mu\text{A}$ Notes 4, 5, 6	—		± 12 ± 29	—		± 25 ± 49	—		± 50 ± 74	mV
I_{RMIN}	Minimum Operating Current	Notes 4, 5	—	45	60 65	—	45	65 70	—	45	65 70	μA
$\Delta V_R / \Delta T$	Average Reverse Breakdown Voltage Temperature Coefficient	$I_R = 10\text{mA}$ $I_R = 1\text{mA}$ $I_R = 100\mu\text{A}$ Notes 4, 5	—	± 20 ± 15 ± 15	± 100	—	± 20 ± 15 ± 15	± 150	—	± 20 ± 15 ± 15	± 150	ppm/ $^\circ\text{C}$
$\Delta V_R / \Delta I_R$	Reverse Breakdown Voltage Change with Operating Current Change	$I_{\text{RMIN}} \leq I_R \leq 1\text{mA}$ Notes 4, 5	—	0.4	0.8 1.0	—	0.4	1.0 1.2	—	0.4	1.0 1.2	mV
		$1\text{mA} \leq I_R \leq 12\text{mA}$	—	2.3	6.0 8.0	—	2.3	8.0 10.0	—	2.3	8.0 10.0	mV
Z_R	Reverse Dynamic Impedance	$I_R = 1\text{mA}$, $f = 120\text{Hz}$, $I_{\text{AC}} = 0.1 I_R$ Notes 4, 5	—	0.3	0.9	—	0.3	1.1	—	0.3	1.1	Ω

PRECISION MICROPOWER SHUNT VOLTAGE REFERENCE

PRELIMINARY INFORMATION

TCN4040

ELECTRICAL CHARACTERISTICS (Cont.): Boldface type specifications apply for $T_A = T_J = T_{MIN}$ to T_{MAX} . All other specifications; $T_A = T_J = 25^\circ\text{C}$.

			TCN4040CEOA TCN4040CENB TCN4040CEZB			TCN4040DEOA TCN4040DENB TCN4040DEZB			TCN4040EENB TCN4040EEZB			Unit
Symbol	Parameter	Test Conditions	Min	Typ	Max	Min	Typ	Max	Min	Typ	Max	
e_N	Wideband Noise	$I_R = 100\mu\text{A}$, $10\text{Hz} \leq f \leq 10\text{kHz}$ Notes 4, 5	—	35	—	—	35	—	—	35	—	$\mu\text{V/msec}$
ΔV_R	Reverse Breakdown Voltage Long Term Stability	$t = 1000\text{hrs}$ $T = 25^\circ\text{C} \pm 0.1^\circ\text{C}$ $I_R = 100\mu\text{A}$ Notes 4, 5	—	120	—	—	120	—	—	120	—	$\text{ppm}/^\circ\text{C}$

NOTES: 4. Typicals are at $T_J = 25^\circ\text{C}$ and represent most likely parametric norm.
5. Limits are 100% production tested at 25°C .
6. The boldface (over-temperature) limit for Reverse Breakdown Voltage Tolerance is defined as the room temperature Reverse Breakdown Voltage Tolerance $\pm[(\Delta V_R/\Delta T)(65^\circ\text{C})(V_R)]$. $\Delta V_R/\Delta T$ is the V_R temperature coefficient, 65°C is the temperature range from -40°C to the reference point of 25°C , and V_R is the reverse breakdown voltage. The total over-temperature tolerance for the different grades is shown below:
C-grade: $\pm 1.15\% = \pm 0.5\% \pm 100\text{ppm}/^\circ\text{C} \times 65^\circ\text{C}$
D-grade: $\pm 1.98\% = \pm 1.0\% \pm 150\text{ppm}/^\circ\text{C} \times 65^\circ\text{C}$
E-grade: $\pm 2.98\% = \pm 2.0\% \pm 150\text{ppm}/^\circ\text{C} \times 65^\circ\text{C}$

PIN DESCRIPTION

Pin No. (SOT-23B-3)	Pin No. TO-92	Pin No. 8-Pin SOIC	Symbol	Description
1	1	1	NC	No connection
		2	NC	No connection
		3	NC	No connection
2	2		+	Positive terminal
3	3		—	Negative terminal
		4	—	Negative terminal
		5	NC	No connection
		6	NC	No connection
		7	NC	No connection
		8	+	Positive terminal

TCN4040**APPLICATIONS INFORMATION**

Available in a space saving SOT-23B-3 surface mount package, the TCN4040 is a precision micro-power curvature-corrected bandgap shunt voltage reference. The TCN4040 is designed for stable operation without an external capacitor connected between the “+” pin and the “–” pin. The TCN4040 also remains stable, however, if a bypass capacitor is used. The minimum operating current increase is 60mA and the maximum operating current is 15mA.

The TCN4040, in the SOT-23B-3 package has a parasitic Schottky diode between pin 3 (–) and pin 1. (Die attach interface contact). Therefore, pin 1 of the SOT-23B-3 package must be left floating or connected to pin 3.

In a conventional shunt regulator application, an external series resistor (R_S) is connected between the supply voltage and the TCN4040 (Figure 1). R_S determines the current that flows through the load (I_L) and the TCN4040 (I_Q). Even when the supply voltage is at its minimum, and the load current is at its maximum value, R_S should be small enough to supply at least the minimum acceptable I_Q to the TCN4040 since load current and supply voltage may vary. Conversely, when the supply voltage is at its maximum and I_L is at its minimum, R_S should be large enough that the current flowing through the TCN4040 is less than 15mA.

R_S is determined by the supply voltage, (V_S), the load and operating current, (I_L and I_Q), and the TCN4040's reverse breakdown voltage, V_R .

$$R_S = \frac{V_S - V_R}{I_L + I_Q}$$

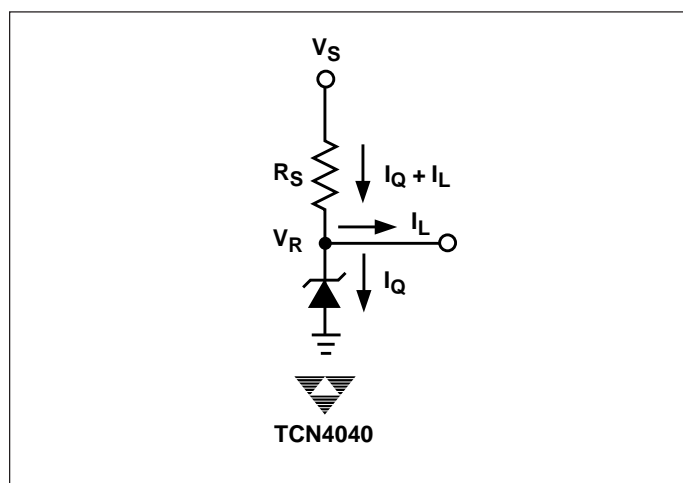


Figure 1. Shunt Regulator

TCN4041

PRECISION MICROPOWER SHUNT VOLTAGE REFERENCE

FEATURES

- Small Packages SOT-23B-3, TO-92, and SO-8
- Output Capacitor Not Required
- Handles Capacitive Loads
- Adjustable Voltage and Fixed Reverse Breakdown Voltage of 1.2V
- Low Output Noise
- Wide Operating Current Range (60 μ A to 15mA)
- – 40°C to + 85°C Operating Temperature Range

APPLICATIONS

- Portable, Battery-Powered Equipment
- Data Acquisition Systems
- Instrumentation
- Process Control
- Energy Management
- Product Testing
- Automotive
- Precision Audio Components

GENERAL DESCRIPTION

For applications in tight quarters, the TCN4041 precision voltage reference is available in a space-saving 3mm x 1.3mm SOT-23B-3 surface mount package. The TCN4041 eliminates the need for an external stabilizing capacitor while maintaining stability with any capacitive load. The minimum operating current is for both the TCN4041-1.2V and the TCN4041-ADJ. Both versions have a maximum operating current of 12mA.

To ensure that the prime parts have an accuracy of better than $\pm 0.5\%$ (C grade) at 25°C, the TCN4041 uses fuse and zener-zap reverse breakdown voltage trim during wafer sort. Low dynamic impedance and bandgap reference temperature drift curvature correction maintain stable reverse breakdown voltage accuracy over a wide range of operating temperatures (– 40°C to + 85°C) and currents from (60 μ A to 12mA).

The TCN4041 is available in small SOT-23, TO-92, and SO-8 packages.

ORDERING INFORMATION

Part No.	Output Voltage (V)	Package	Voltage Tolerance Temp. Coefficient Grade
TCN4041C-1.2ENB	1.2	SOT-23B-3*	$\pm 0.5\%$, 100ppm/°C Max (C Grade)
TCN4041C-ADJENB	ADJ	SOT-23B-3*	$\pm 0.5\%$, 100ppm/°C Max (C Grade)
TCN4041C-1.2EOA	1.2	8-Pin SOIC	$\pm 0.5\%$, 100ppm/°C Max (C Grade)
TCN4041C-ADJEOA	ADJ	8-Pin SOIC	$\pm 0.5\%$, 100ppm/°C Max (C Grade)
TCN4041C-1.2EZB	1.2	TO-92	$\pm 0.5\%$, 100ppm/°C Max (C Grade)
TCN4041C-ADJEZB	ADJ	TO-92	$\pm 0.5\%$, 100ppm/°C Max (C Grade)
TCN4041D-2.5EOA	2.5	8-Pin SOIC	$\pm 1.0\%$, 150ppm/°C Max (D Grade)
TCN4041D-4.1EOA	4.1	8-Pin SOIC	$\pm 1.0\%$, 150ppm/°C Max (D Grade)
TCN4041D-1.2ENB	1.2	SOT-23B-3*	$\pm 1.0\%$, 150ppm/°C Max (D Grade)
TCN4041D-ADJENB	ADJ	SOT-23B-3*	$\pm 1.0\%$, 150ppm/°C Max (D Grade)
TCN4041D-1.2EZB	1.2	TO-92	$\pm 1.0\%$, 150ppm/°C Max (D Grade)
TCN4041D-ADJEZB	ADJ	TO-92	$\pm 1.0\%$, 150ppm/°C Max (D Grade)
TCN4041E-1.2ENB	1.2	SOT-23B-3*	$\pm 2.0\%$, 150ppm/°C Max (E Grade)
TCN4041E-1.2EZB	1.2	TO-92	$\pm 2.0\%$, 150ppm/°C Max (E Grade)

NOTE: *SOT-23B-3 is equivalent to the JEDEC (TO-236)

TCN4041

ABSOLUTE MAXIMUM RATINGS* (Note 1)

Reverse Current	20mA
Forward Current	10mA
Power Dissipation ($T_A = 25^\circ\text{C}$) (Note 2)	
SOT-23B-3 Package	230mW
TO-92 Package	440mW
SO-8 Package	470mW
Storage Temperature	-65°C to $+150^\circ\text{C}$
Lead Temperature (Soldering, 10 seconds)	
EOA	$+260^\circ\text{C}$
ENB	$+300^\circ\text{C}$
EZB	$+300^\circ\text{C}$
ESD Susceptibility	

Human Body Model (Note 3)	2kV
Machine Model (Note 3)	200V

*Functional operation above the absolute maximum stress rating is not implied.

OPERATING RATINGS (NOTES 1 AND 2)

Temperature Range	
($T_{\text{MIN}} \leq T_A \leq T_{\text{MAX}}$)	$-40^\circ\text{C} \leq T_A \leq +85^\circ\text{C}$
Reverse Current	
TCN4041-1.2	60 μA to 12mA
TCN40401-ADJ	68 μA to 12mA
Output Voltage Range	
TCN4041-ADJ	1.24V to 10V

- NOTES:** 1. Absolute Maximum Ratings indicate limits beyond which damage to the device may occur. Operating Ratings indicate conditions for which the device is functional, but do not guarantee specific performance limits. For guaranteed specifications and test conditions, see *Electrical Characteristics*. The guaranteed specifications apply only for the test conditions listed. Some performance characteristics may degrade when the device is not operated under the listed test conditions.
2. The maximum power dissipation must be derated at elevated temperatures and is dictated by T_{JMAX} (maximum junction temperature), θ_{JA} (junction to ambient thermal resistance), and T_A (ambient temperature). The maximum allowable power dissipation at any temperature is $\text{PD}_{\text{MAX}} = (T_{\text{JMAX}} - T_A) / \theta_{\text{JA}}$ or the number given in Absolute Maximum Ratings, whichever is lower. For the TCN4041, $T_{\text{JMAX}} = 125^\circ\text{C}$, and the typical thermal resistance (θ_{JA}), when board mounted, is 185°C/W for the M package, 326°C/W for the SOT-23B-3 package, and 180°C/W with 0.4" lead length and 170°C/W with 0.125" lead length for the TO-92-3 package.
3. The human body model is a 100pF capacitor discharged through a 1.5k Ω resistor into each pin. The machine model is a 200pF capacitor discharged directly into each pin.

ELECTRICAL CHARACTERISTICS: **Boldface** type specifications apply for $T_A = T_J = T_{\text{MIN}}$ to T_{MAX} . All other specifications; $T_A = T_J = 25^\circ\text{C}$. All other specifications; $T_A = T_J = 25^\circ\text{C}$. The grades C, D, and E designate initial Reverse Breakdown Voltage tolerances of $\pm 0.5\%$, $\pm 1.0\%$, and $\pm 2.0\%$, respectively.

			TCN4041CEOA TCN4041CENB TCN4041CEZB			TCN4041DEOA TCN4041DENB TCN4041DEZB			TCN4041EENB TCN4041EEZB			Unit
Symbol	Parameter	Test Conditions	Min	Typ	Max	Min	Typ	Max	Min	Typ	Max	
V_R	Reverse Breakdown Voltage	$I_R = 100\mu\text{A}$ Notes 4, 5	—	1.225	—	—	2.500	—	—	2.500	—	V
	Reverse Breakdown Voltage Tolerance	$I_R = 100\mu\text{A}$ Notes 4, 5, 6	—		± 6 ± 14	—		± 12 ± 24	—		± 25 ± 36	mV
I_{RMIN}	Minimum Operating Current	Notes 4, 5	—	45	60 65	—	45	65 70	—	45	65 70	μA
$\Delta V_R / \Delta T$	Average Reverse Breakdown Voltage Temperature Coefficient	$I_R = 10\text{mA}$ $I_R = 1\text{mA}$ $I_R = 100\mu\text{A}$ Notes 4, 5	—	± 20 ± 15 ± 15	± 100	—	± 20 ± 15 ± 15	± 160	—	± 20 ± 15 ± 15	± 150	ppm/ $^\circ\text{C}$
$\Delta V_R / \Delta I_R$	Reverse Breakdown Voltage Change with Operating Current Change	$I_{\text{RMIN}} \leq I_R \leq 1\text{mA}$ Notes 4, 5	—	0.7	1.5 2.0	—	0.4	2.0 2.5	—	0.4	2.0 2.5	mV
		$1\text{mA} \leq I_R \leq 12\text{mA}$	—	2.5	6.0 8.0	—	2.3	8.0 10.0	—	2.3	8.0 10.0	mV
Z_R	Reverse Dynamic Impedance	$I_R = 1\text{mA}$, $f = 120\text{Hz}$, $I_{\text{AC}} = 0.1 I_R$ Notes 4, 5	—	0.5	1.5	—	0.3	2.0	—	0.3	2.0	Ω

PRECISION MICROPOWER
SHUNT VOLTAGE REFERENCE

PRELIMINARY INFORMATION

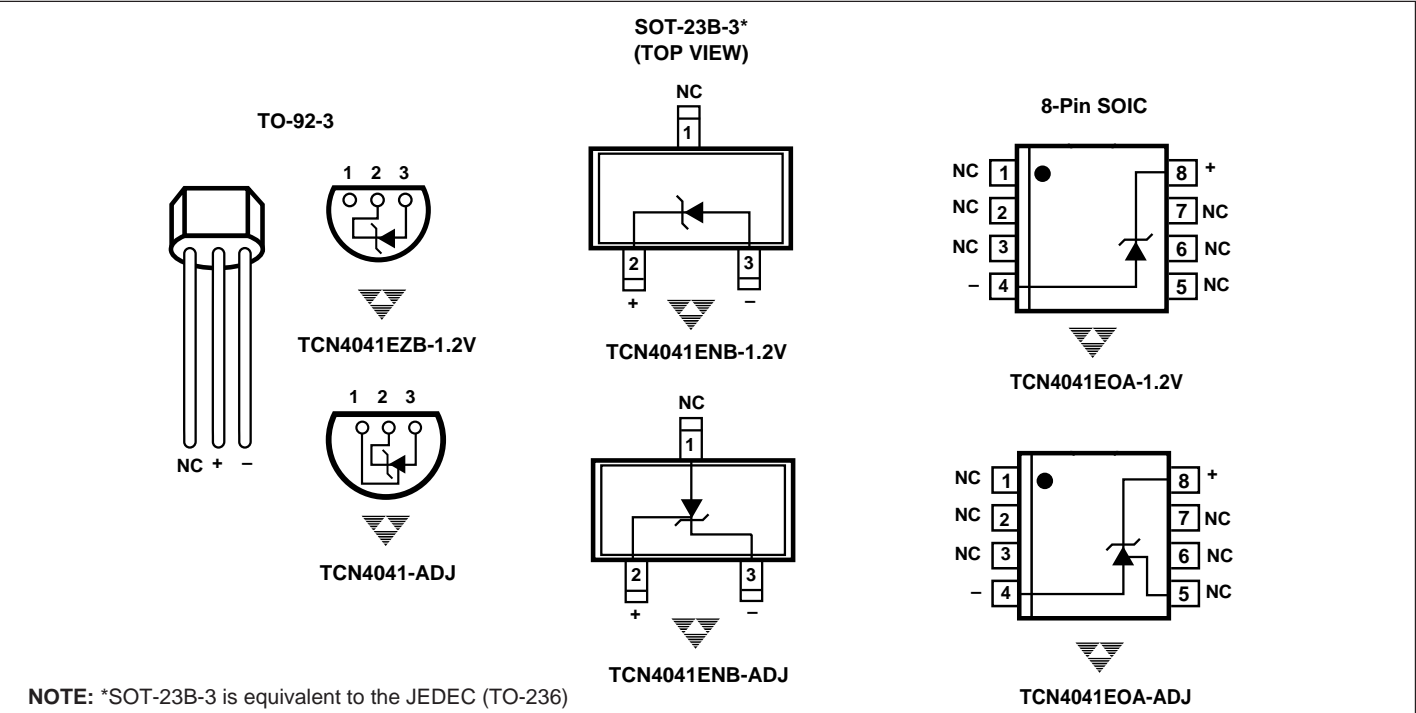
TCN4041

ELECTRICAL CHARACTERISTICS (Cont.): Boldface type specifications apply for $T_A = T_J = T_{MIN}$ to T_{MAX} . All other specifications; $T_A = T_J = 25^{\circ}\text{C}$. The grades C, D, and E designate initial Reverse Breakdown Voltage tolerances of $\pm 0.5\%$, $\pm 1.0\%$, and $\pm 2.0\%$, respectively.

			TCN4041CEOA TCN4041CENB TCN4041CEZB			TCN4041DEOA TCN4041DENB TCN4041DEZB			TCN4041EENB TCN4041EEZB			Unit
Symbol	Parameter	Test Conditions	Min	Typ	Max	Min	Typ	Max	Min	Typ	Max	
e_N	Wideband Noise	$I_R = 100\mu\text{A}$, $10\text{Hz} \leq f \leq 10\text{kHz}$ Notes 4, 5	—	20	—	—	20	—	—	20	—	$\mu\text{V/msec}$
ΔV_R	Reverse Breakdown Voltage Long Term Stability	$t = 1000\text{hrs}$ $T = 25^{\circ}\text{C} \pm 0.1^{\circ}\text{C}$ $I_R = 100\mu\text{A}$ Notes 4, 5	—	120	—	—	120	—	—	120	—	$\text{ppm}/^{\circ}\text{C}$

- NOTES:**
- Typicals are at $T_J = 25^{\circ}\text{C}$ and represent most likely parametric norm.
 - Limits are 100% production tested at 25°C .
 - The boldface (over-temperature) limit for Reverse Breakdown Voltage Tolerance is defined as the room temperature Reverse Breakdown Voltage Tolerance $\pm[(\Delta V_R/\Delta T)(65^{\circ}\text{C})(V_R)]$. $\Delta V_R/\Delta T$ is the V_R temperature coefficient, 65°C is the temperature range from -40°C to the reference point of 25°C , and V_R is the reverse breakdown voltage. The total over-temperature tolerance for the different grades is shown below:
C-grade: $\pm 1.15\% = \pm 0.5\% \pm 100\text{ppm}/^{\circ}\text{C} \times 65^{\circ}\text{C}$
D-grade: $\pm 1.98\% = \pm 1.0\% \pm 150\text{ppm}/^{\circ}\text{C} \times 65^{\circ}\text{C}$
E-grade: $\pm 2.98\% = \pm 2.0\% \pm 150\text{ppm}/^{\circ}\text{C} \times 65^{\circ}\text{C}$
 - When $V_{OUT} \leq 1.6\text{V}$, the TCN4041-ADJ in the SOT-23B package must operate at reduced I_R . This is caused by the series resistance of the die attach between the die (-) output and the package (-) output pin. See the Output Saturation (SOT23-B only) curve in the *Typical Characteristics* section.
 - Reference voltage and temperature coefficient will change with output voltage. See *Typical Characteristics* curves.

PIN CONFIGURATION



TCN4041

PIN DESCRIPTION

Pin No. (SOT-23B-3)	Pin No. TO-92	Pin No. 8-Pin SOIC	Symbol	Description
1	1	1	NC	No connection
		2	NC	No connection
		3	NC	No connection
2	2		+	Positive terminal
3	3		–	Negative terminal
		4	–	Negative terminal
		5	NC	No connection
		6	NC	No connection
		7	NC	No connection
		8	+	Positive terminal

APPLICATIONS INFORMATION

Available in space-saving SOT-23B-3 surface mount packages, the TCN4041 is a precision micro-power curvature-corrected bandgap shunt voltage reference. It is designed for stable operation without an external capacitor connected between the “+” pin and the “-” pin. The TCN4041 also remains stable, however, if a bypass capacitor is used. The device is available in either a fixed 1.2V or an adjustable reverse breakdown voltage. The minimum operating current is 60mA, and the maximum operating current is 12mA for both options.

TCN4041s in the SOT-23 package have pin 1 connected as the (-) output. (Die attach interface contact). Therefore, pin 1 of the TCN4041-1.2 must be left floating or connected to pin 3, and pin 1 on the TCN4041-ADJ is the (-) output.

In a conventional shunt regulator application, an external series resistor (R_S) is connected between the supply voltage and the TCN4041 (Figure 1). R_S determines the current that flows through the load (I_L) and the TCN4041 (I_Q). Even when the supply voltage is at its minimum, and the load current is at its maximum value, R_S should be small enough to supply at least the minimum acceptable I_Q to the TCN4041 since load current and supply voltage may vary. Conversely, when the supply voltage is at its maximum and I_L is at its minimum, R_S should be large enough that the current flowing through the TCN4041 is less than 12mA.

R_S is determined by the supply voltage, (V_S), the load and operating current, (I_L and I_Q), and the TCN4041's reverse breakdown voltage, V_R .

$$R_S = \frac{V_S - V_R}{I_L + I_Q}$$

Output voltage on the TCN4041-ADJ can be adjusted to any value between 1.24V and 10V. It is a function of the internal reference voltage (V_{REF}) and the ratio of the external feedback resistors (see Figure 2). The output can be found with the equation (where V_{OUT} is the desired output voltage):

$$V_{OUT} = V_{REF} (R_2/R_1 + 1)$$

Equation 1.

The value of the internal V_{REF} is a function of V_O . The “corrected” V_{REF} can be determined by (where V_O is the desired output voltage):

$$V_{REF}' = V_{OUT} \Delta V_{REF}/\Delta V_{OUT} + V_Y$$

Equation 2.

$\Delta V_{REF}/\Delta V_{OUT}$ is typically -1.3mV/V, and $V_Y = 1.240V$. Replace the value of V_{REF}' in Equation 1 with the value determined using Equation 2.

The actual output voltage can deviate from that predicted by the typical $\Delta V_{REF}/\Delta V_O$ in Equation 2. The worst case $\Delta V_{REF}/\Delta V_{OUT}$ for C-grade parts is -2.5mV/V and $V_Y = 1.246V$; for D-grade, the worst case is -3.0mV/V and $V_Y = 1.248V$.

The difference in output voltage resulting from typical worst case values are shown in the following example: Let $V_O = +9V$. Using the typical value of $\Delta V_{REF}/\Delta V_{OUT}$, V_{REF} is 1.228; choosing a value of $R_1 = 10k\Omega$, $R_2 = 63.272k\Omega$. The output voltage, when using worst case $\Delta V_{REF}/\Delta V_{OUT}$ for C-grade and D-grade parts, is 8.965V and 8.946V, respectively. This could result in errors as large as 0.39% for C-grade, and 0.59% for D-grade parts. However, resistor values resulting from the typical value of $\Delta V_{REF}/\Delta V_{OUT}$ will work most of the time, requiring no additional adjustments.

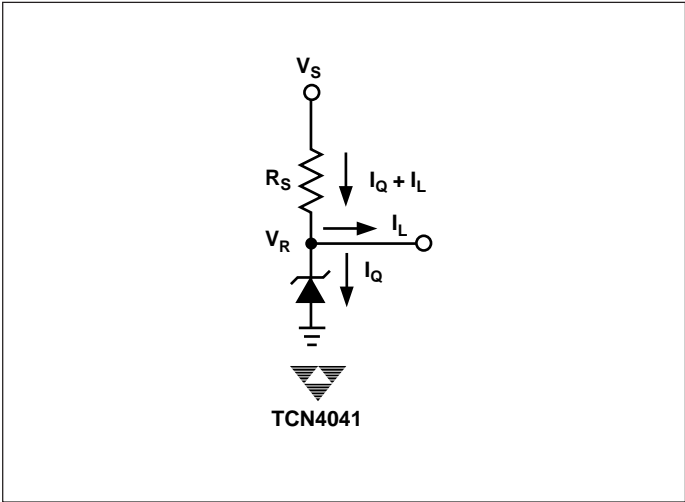


Figure 1. Shunt Regulator

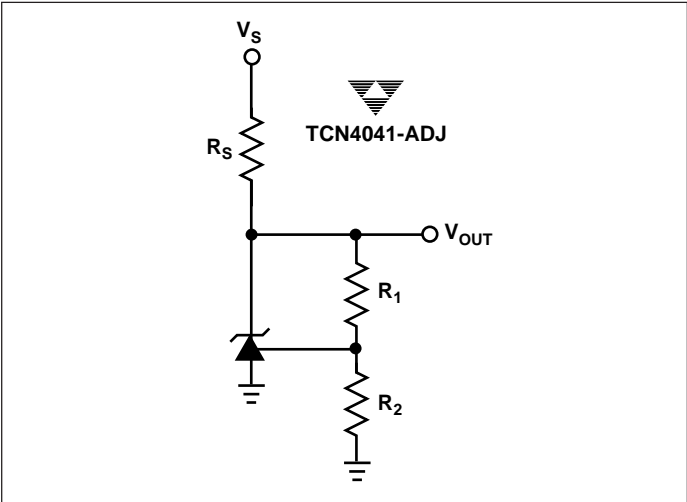


Figure 2. Adjustable Shunt