

TOSHIBA BIPOLAR DIGITAL INTEGRATED CIRCUIT SILICON MONOLITHIC

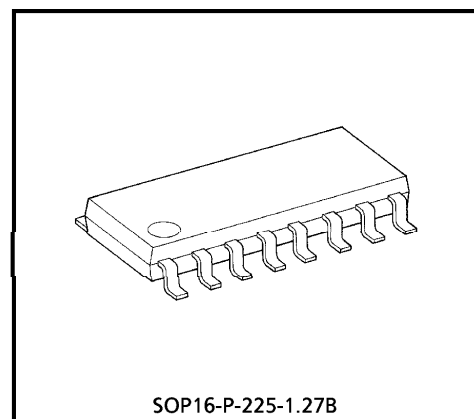
TD62304FB, TD62305FB

7CH LOW INPUT ACTIVE DARLINGTON SINK DRIVER

The TD62304FB and TD62305FB are non-inverting transistor arrays, which are comprised of seven NPN darlington output stages PNP input stages. These devices are Low Level input active drivers and are suitable for operations with TTL, 5V CMOS and 5V Microprocessor which have sink current output drivers. Applications include relay, hammer, lamp and LED driver.

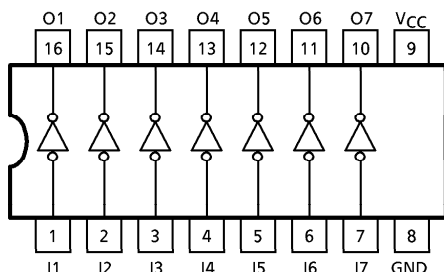
FEATURES

- Output current (single output) : 500mA (Max.)
- High sustaining voltage : 35V (Min.)
- Low level active input
- Standard supply voltage
- Input compatible with TTL and 5V CMOS
- Package type-FB : SOP-16pin

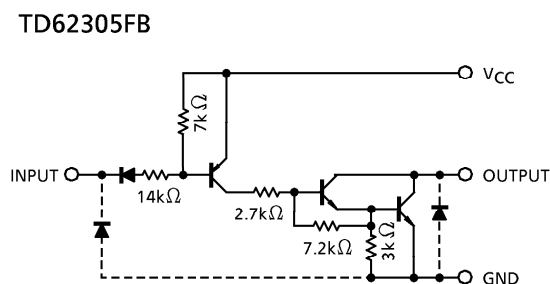
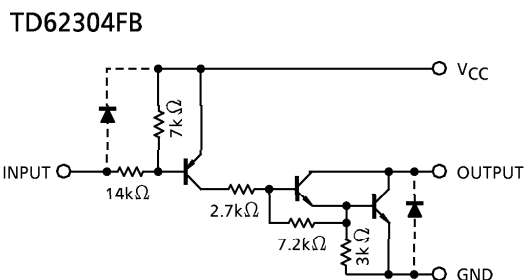


Weight : 0.16g (Typ.)

PIN CONNECTION (TOP VIEW)



SCHEMATICS (EACH DRIVER)



(Note) The input and output parasitic diodes cannot be used as clamp diodes.

961001EBA2

- TOSHIBA is continually working to improve the quality and the reliability of its products. Nevertheless, semiconductor devices in general can malfunction or fail due to their inherent electrical sensitivity and vulnerability to physical stress. It is the responsibility of the buyer, when utilizing TOSHIBA products, to observe standards of safety, and to avoid situations in which a malfunction or failure of a TOSHIBA product could cause loss of human life, bodily injury or damage to property. In developing your designs, please ensure that TOSHIBA products are used within specified operating ranges as set forth in the most recent products specifications. Also, please keep in mind the precautions and conditions set forth in the TOSHIBA Semiconductor Reliability Handbook.
- The products described in this document are subject to foreign exchange and foreign trade control laws.
- The information contained herein is presented only as a guide for the applications of our products. No responsibility is assumed by TOSHIBA CORPORATION for any infringements of intellectual property or other rights of the third parties which may result from its use. No license is granted by implication or otherwise under any intellectual property or other rights of TOSHIBA CORPORATION or others.
- The information contained herein is subject to change without notice.

MAXIMUM RATINGS (Ta = 25°C)

CHARACTERISTIC	SYMBOL	RATING	UNIT
Supply Voltage	V _{CC}	- 0.5~7.0	V
Output Sustaining Voltage	V _{CE (SUS)}	- 0.5~35	V
Output Current	I _{OUT}	500	mA / ch
Input Voltage	V _{IN}	- 22~V _{CC} + 0.5 - 0.5~7 (Note 1)	V
Input Current	I _{IN}	- 10	mA
Power Dissipation	P _D	0.625 (Note 2)	W
Operating Temperature	T _{opr}	- 40~85	°C
Storage Temperature	T _{stg}	- 50~150	°C

(Note 1) On glass epoxy PCB (30 × 30 × 1.6mm Cu 50%)

(Note 2) TD62305FB only

RECOMMENDED OPERATING CONDITIONS (Ta = - 40~85°C)

CHARACTERISTIC		SYMBOL	CONDITION	MIN.	TYP.	MAX.	UNIT	
Supply Voltage		V _{CC}	—	4.5	5.0	5.5	V	
Output Sustaining Voltage		V _{CE (SUS)}	—	0	—	35	V	
Output Current		I _{OUT}	DC 1 circuit	0	—	400	mA / ch	
			T _{pw} ≤ 25ms 7 circuits	Duty = 10%	0	—		240
			T _j = 120°C Ta = 85°C (Note)	Duty = 50%	0	—		60
Input Voltage	TD62304FB	V _{IN}	—	- 20	—	V _{CC}	V	
	TD62305FB			0	—	5.5		
Input Voltage (Output On)	TD62304FB	V _{IN (ON)}	—	- 22	—	V _{CC} - 3.5	V	
	TD62305FB			- 0.5	—	V _{CC} - 3.7		
Input Voltage (Output Off)	TD62304FB	V _{IN (OFF)}	—	V _{CC} - 0.4	—	V _{CC}	V	
	TD62305FB			V _{CC} - 0.6	—	V _{CC}		
Power Dissipation		P _D	(Note)	—	—	0.325	W	

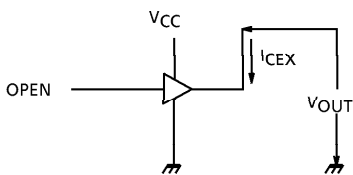
(Note) On glass epoxy PCB (30 × 30 × 1.6mm Cu 50%)

ELECTRICAL CHARACTERISTICS (Ta = 25°C)

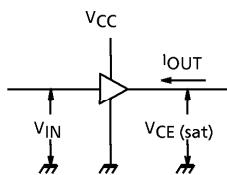
CHARACTERISTIC		SYMBOL	TEST CIR-CUIT	TEST CONDITION	MIN.	TYP.	MAX.	UNIT	
Output Leakage Current		I_{CEX}	1	$V_{CC} = 5.5V, V_{OUT} = 35V$ $T_a = 85^\circ C, I_{IN} = 0$	—	—	- 100	μA	
Output Saturation Voltage		$V_{CE (sat)}$	2	$V_{CC} = 4.5V$ $I_{OUT} = 350mA$	$V_{IN} = V_{IN (ON)}$ (Max.)	—	1.4	2.0	V
					$V_{IN} = 0.8V$	—	1.4	2.2	
Input Current	(Output On)	$I_{IN (ON)}$	3	$V_{CC} = 5.5V, V_{IN} = 0.4V$ $V_{CC} = 5.5V, V_{IN} = -20V$	—	- 0.32	- 0.45	mA	
	(Output Off)	$I_{IN (OFF)}$	4	—	—	—	- 40		μA
Input Voltage (Output On)	TD62304FB	$V_{IN (ON)}$	5	—	—	—	V_{CC} - 2.8	V	
	TD62305FB				—	—	V_{CC} - 3.7		
Supply Current	(Output On)	$I_{CC (ON)}$	6	$V_{CC} = 5.5V, V_{IN} = 0V$	—	17	22	mA	
	(Output Off)	$I_{CC (OFF)}$		$V_{CC} = V_{IN} = 5.5V$	—	—	100		μA
Turn-On Delay		t_{ON}	7	$V_{CC} = 5V, C_L = 15pF$ $V_{OUT} = 35V, R_L = 87.5\Omega$	—	0.1	—	μs	
Turn-Off Delay		t_{OFF}			—	3	—		

TEST CIRCUIT

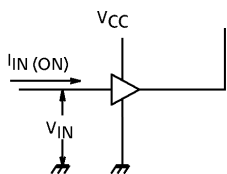
1. I_{CEX}



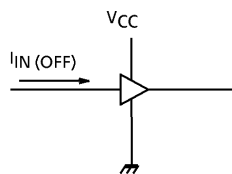
2. $V_{CE(sat)}$



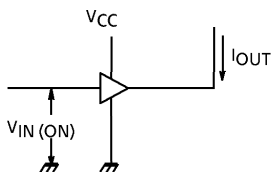
3. $I_{IN(ON)}$



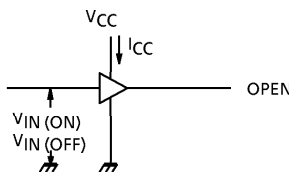
4. $I_{IN(OFF)}$



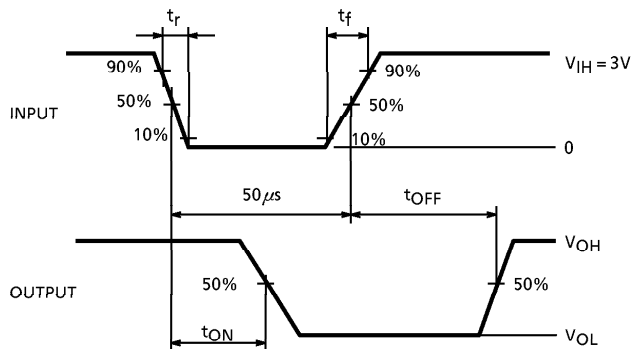
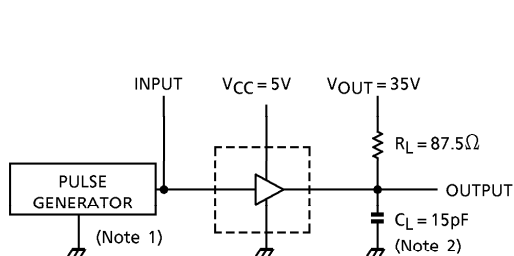
5. $V_{IN(ON)}$



6. I_{CC}



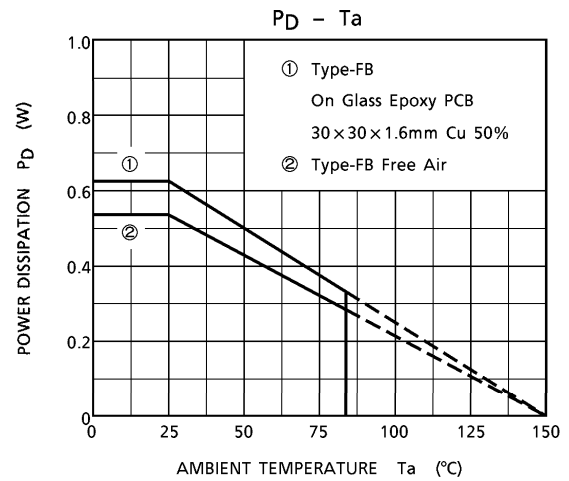
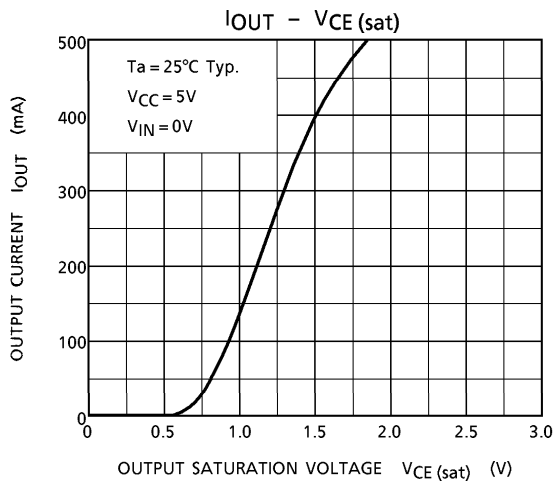
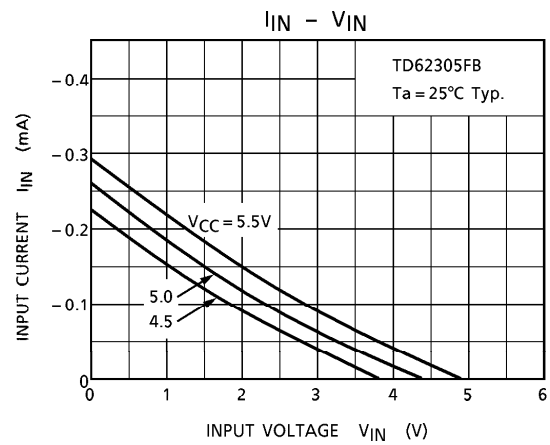
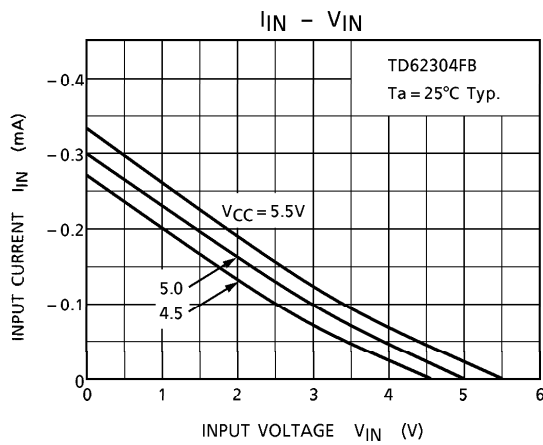
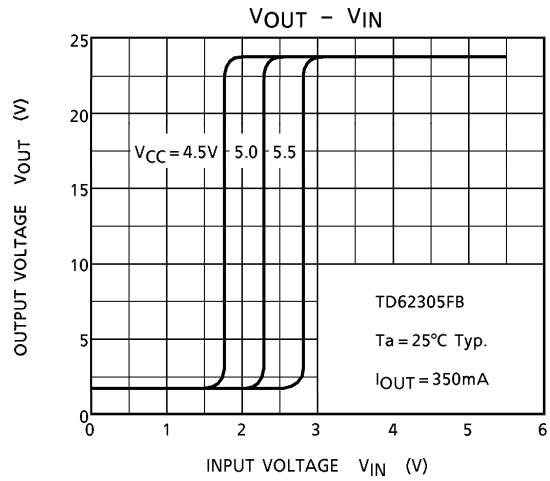
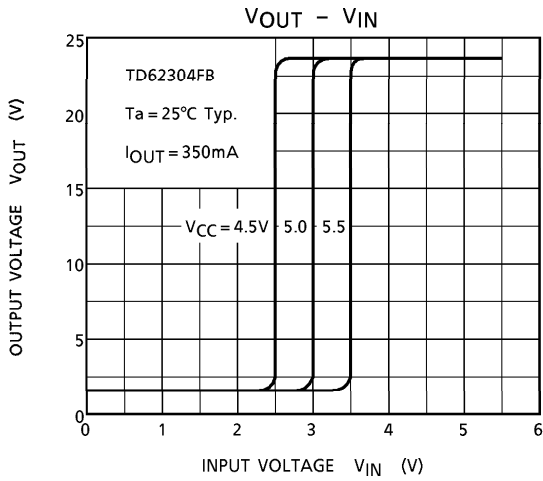
7. t_{ON}, t_{OFF}



- (Note 1) Pulse width $50\mu s$, duty cycle 10%
Output impedance 50Ω , $t_r \leq 10ns$, $t_f \leq 5ns$
- (Note 2) C_L includes probe and jig capacitance

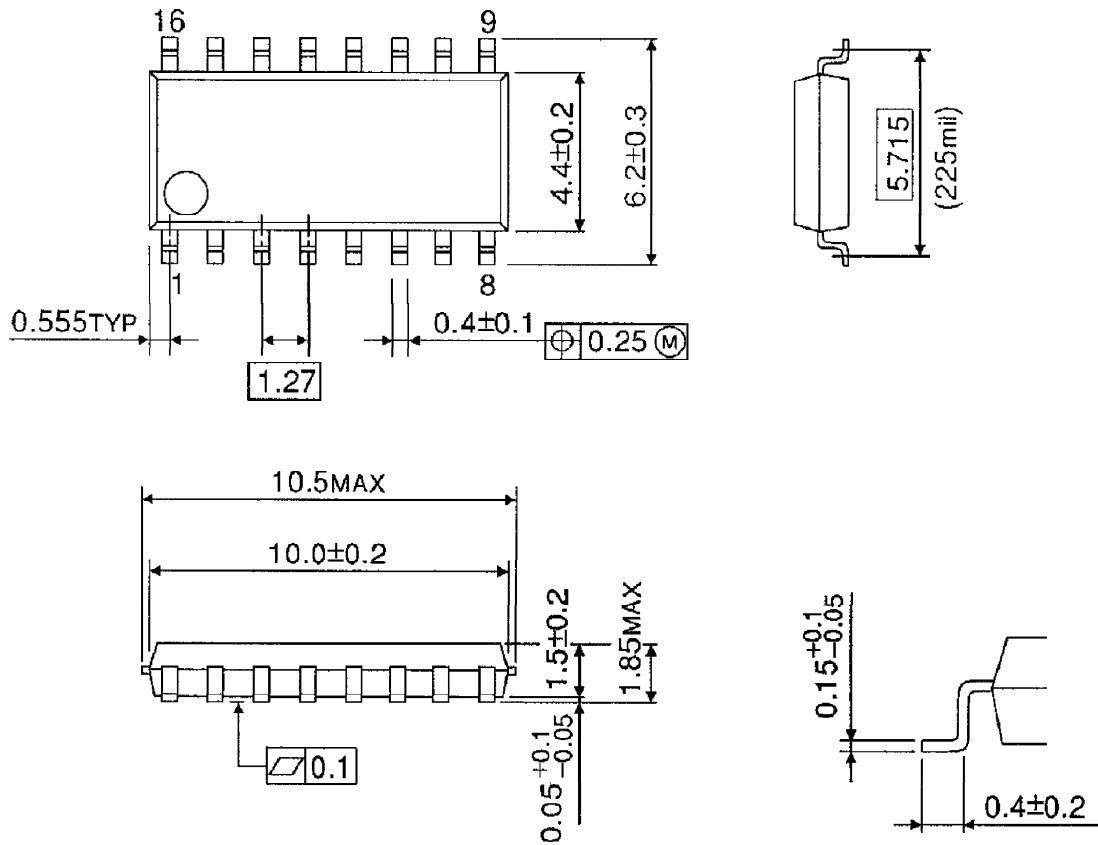
PRECAUTIONS for USING

Utmost care is necessary in the design of the output line, V_{CC} and GND line since IC may be destroyed due to short-circuit between outputs, air contamination fault, or fault by improper grounding.



OUTLINE DRAWING
SOP16-P-225-1.27B

Unit : mm



Weight : 0.16g (Typ.)

Copyright Each Manufacturing Company.

All Datasheets cannot be modified without permission.

This datasheet has been download from :

www.AllDataSheet.com

100% Free DataSheet Search Site.

Free Download.

No Register.

Fast Search System.

www.AllDataSheet.com