

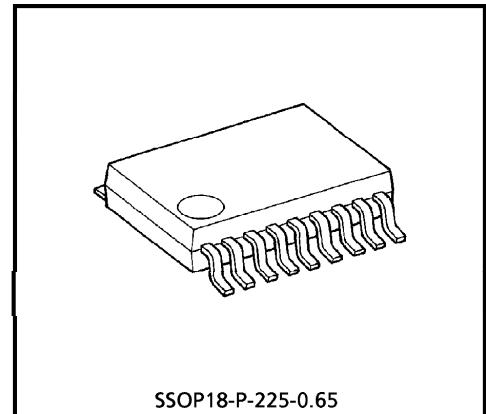
TD62381FN

8ch LOW SATURATION SINK DRIVER

The TD62381FN is comprised of eight NPN low saturation drivers. This device are specifically designed for multiplexed eight driving of eight digit common-cathode LED and also can be employed as a sink driver for multiplexed LED displays using with the TD62785FN at standard supply voltage, 5V. Applications include relay, hammer, lamp and LED display drivers.

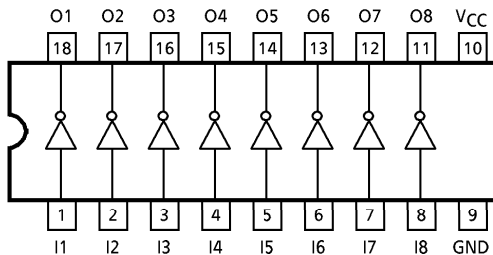
FEATURES

- Package Type : SSOP18 pin
- Low Saturation Output : $V_{CE(sat)} = 0.9V$ (MAX.) @ $I_{OUT} = 500mA$
- Output Rating : $V_{OUT} = 15V$ (MIN.)
- Input Compatible with TTL and 5V CMOS
- Low Level Active Inputs
- Standard Supply Voltage

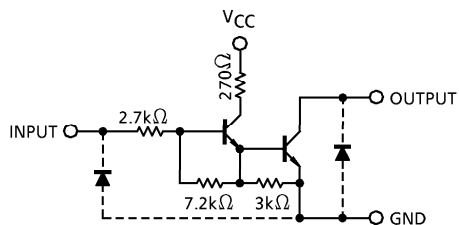


SSOP18-P-225-0.65
Weight : 0.09g (Typ.)

PIN CONNECTION (TOP VIEW)



SCHEMATICS (EACH DRIVER)



(Note) The input and output parasitic diodes cannot be used as clamp diodes.

961001EBA2

● TOSHIBA is continually working to improve the quality and the reliability of its products. Nevertheless, semiconductor devices in general can malfunction or fail due to their inherent electrical sensitivity and vulnerability to physical stress. It is the responsibility of the buyer, when utilizing TOSHIBA products, to observe standards of safety, and to avoid situations in which a malfunction or failure of a TOSHIBA product could cause loss of human life, bodily injury or damage to property. In developing your designs, please ensure that TOSHIBA products are used within specified operating ranges as set forth in the most recent products specifications. Also, please keep in mind the precautions and conditions set forth in the TOSHIBA Semiconductor Reliability Handbook.

MAXIMUM RATINGS (Ta = 25°C)

CHARACTERISTIC	SYMBOL	RATING	UNIT
Supply Voltage	V _{CC}	7	V
Output Sustaining Voltage	V _{CE(SUS)}	15	V
Output Current	I _{OUT}	500	mA / ch
Input Voltage	V _{IN}	7	V
Input Current	I _{IN}	5	mA
Power Dissipation	P _D *	0.96	W
Operating Temperature	T _{opr}	-40~85	°C
Storage Temperature	T _{stg}	-55~150	°C

* On Glass Epoxy PCB (50 × 50 × 1.6mm Cu 40%)

RECOMMENDED OPERATING CONDITIONS (Ta = -40~85°C)

CHARACTERISTIC	SYMBOL	TEST CONDITION	MIN.	TYP.	MAX.	UNIT	
Supply Voltage	V _{CC}		4.5	5.0	5.5	V	
Output Voltage	V _{OUT}		—	—	12	V	
Output Current	I _{OUT} *	DC 1 Circuit	0	—	400	mA / ch	
		T _{pw} = 25ms 8 Circuit On Ta = 85°C, T _j = 120°C	Duty = 10%	0	—		400
		Duty = 50%	0	—	330		
Input Voltage	V _{IN}		0	—	V _{CC}	V	
	Output On	V _{IN (ON)}	2.4	—	V _{CC}		
	Output Off	V _{IN (OFF)}	0	—	0.4		
Power Dissipation	P _D *		—	—	0.4	W	

* On Glass Epoxy PCB (50 × 50 × 1.6mm Cu 40%)

ELECTRICAL CHARACTERISTICS (Ta = 25°C, V_{CC} = 5V)

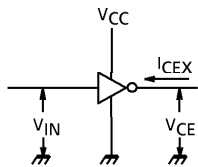
CHARACTERISTIC	SYMBOL	TEST CIRCUIT	TEST CONDITION	MIN.	TYP.	MAX.	UNIT
Output Leakage Current	I _{CEX}	1	V _{IN} = OPEN V _{OUT} = 12V, Ta = 85°C	—	—	100	μA
Output Saturation Voltage	V _{CE (sat)}	2	I _{OUT} = 500mA	—	—	0.9	V
			I _{OUT} = 350mA	—	—	0.7	
Input Current	I _{IN (ON)}	3	V _{CC} = 5V, V _{IN} = 2.4V	—	0.4	0.7	mA
Input Voltage (Output on)	V _{IN (ON)}	—	V _{CC} = 5V	—	—	2.4	V
Supply Current	I _{CC}	4	V _{CC} = V _{IN} = 5V	—	—	17	mA / ch
Turn-On Delay	t _{ON}	5	V _{OUT} = 10V, R _L = 25Ω C _L = 15pF	—	0.1	—	μs
Turn-Off Delay	t _{OFF}			—	1.2	—	

961001EBA2'

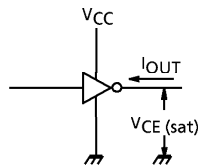
- The products described in this document are subject to foreign exchange and foreign trade control laws.
- The information contained herein is presented only as a guide for the applications of our products. No responsibility is assumed by TOSHIBA CORPORATION for any infringements of intellectual property or other rights of the third parties which may result from its use. No license is granted by implication or otherwise under any intellectual property or other rights of TOSHIBA CORPORATION or others.
- The information contained herein is subject to change without notice.

TEST CIRCUIT

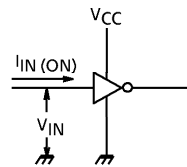
1. I_{CEX}



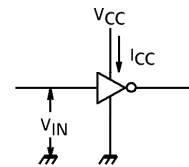
2. $V_{CE(sat)}$



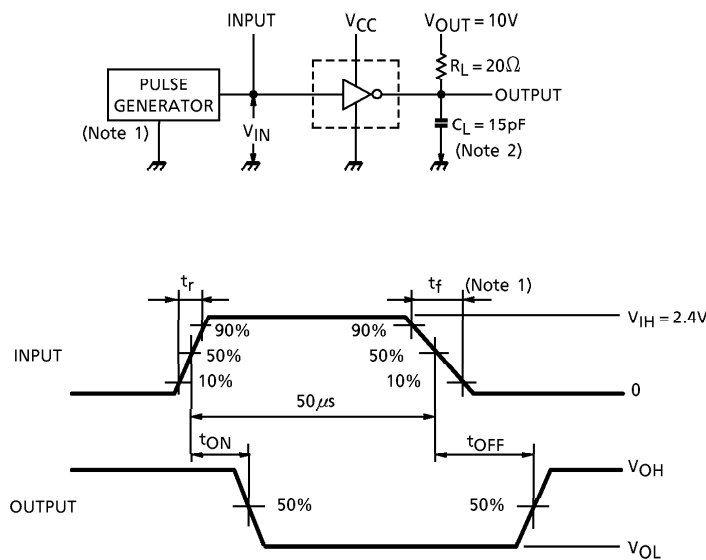
3. $I_{IN(ON)}$



4. I_{CC}



5. t_{ON}, t_{OFF}

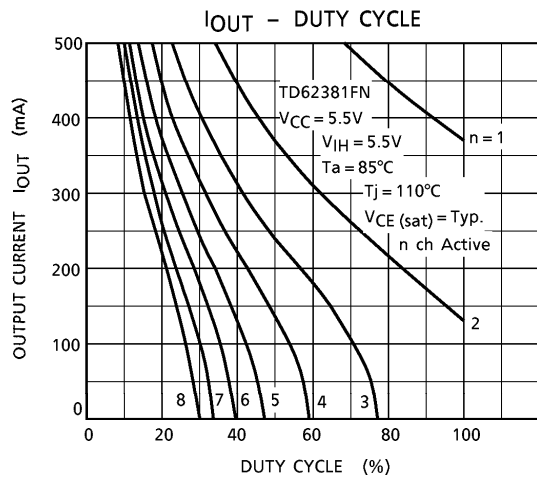
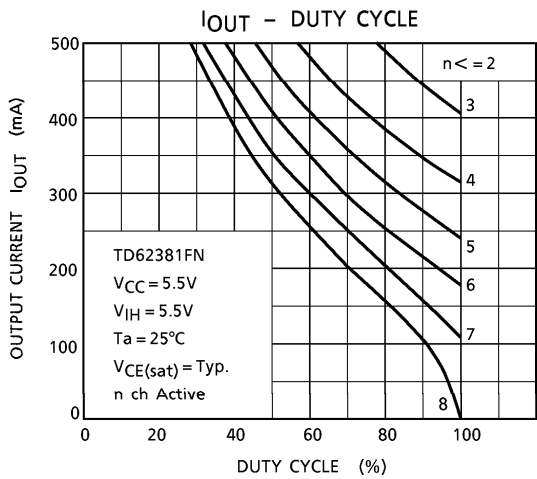
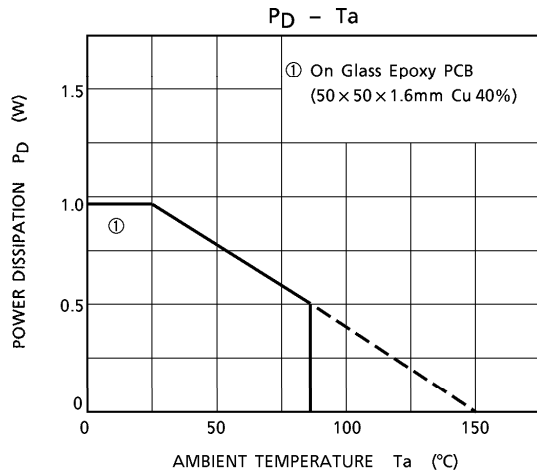
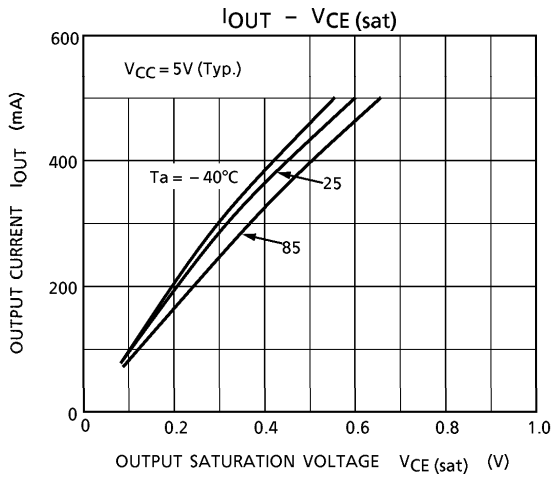
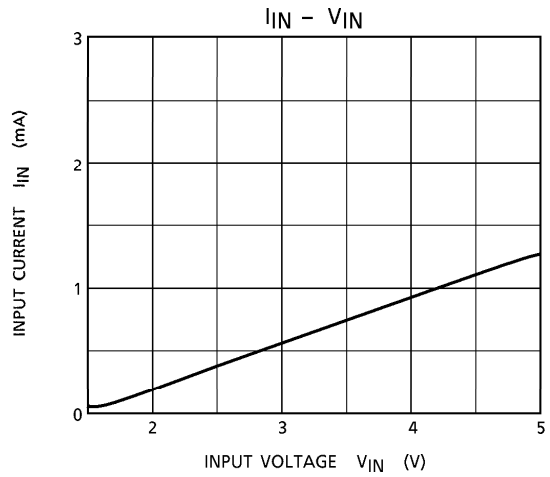
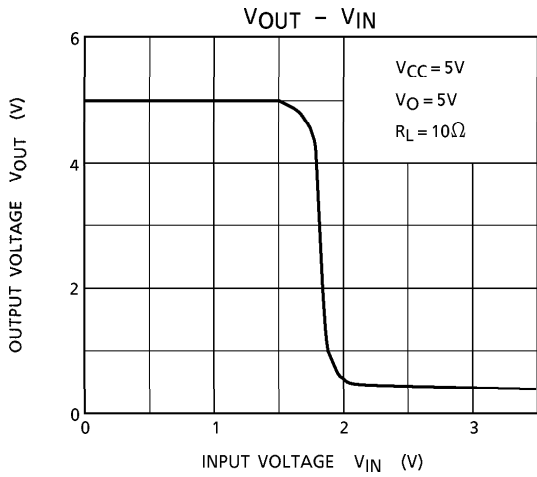


(Note 1) Pulse Width $50\mu s$, Duty Cycle 10%
Output Impedance 50Ω , $t_r \leq 5ns$, $t_f \leq 10ns$

(Note 2) CL includes probe and jig capacitance.

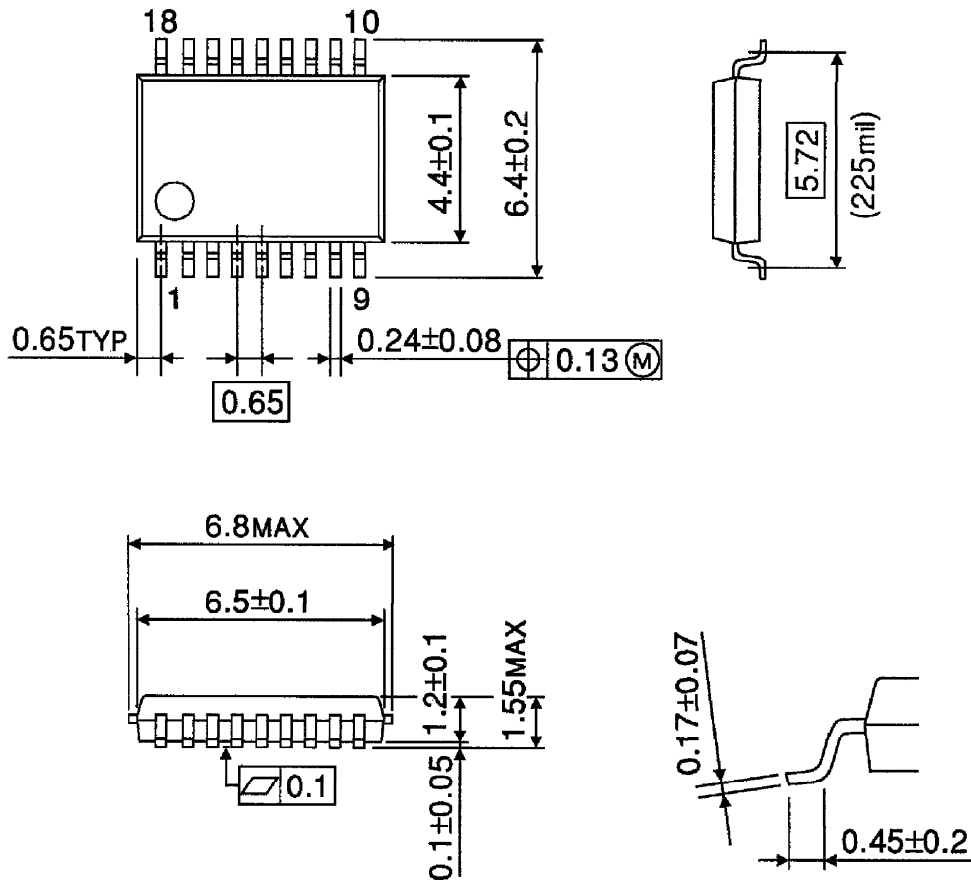
PRECAUTIONS for USING

Utmost care is necessary in the design of the output line, V_{CC} and GND line since IC may be destroyed due to short-circuit between outputs, air contamination fault, or fault by improper grounding.



OUTLINE DRAWING
SSOP18-P-225-0.65

Unit : mm



Weight : 0.09g (Typ.)

Copyright Each Manufacturing Company.

All Datasheets cannot be modified without permission.

This datasheet has been download from :

www.AllDataSheet.com

100% Free DataSheet Search Site.

Free Download.

No Register.

Fast Search System.

www.AllDataSheet.com