

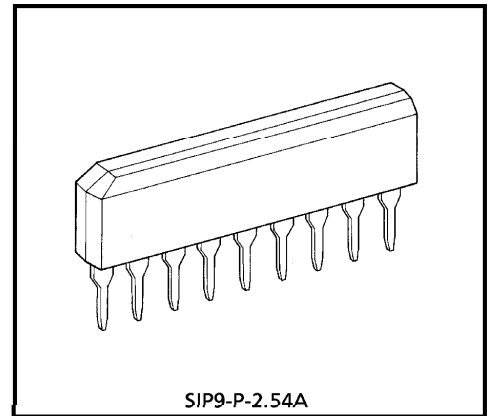
TD62551S, TD62553S, TD62554S, TD62555S

4CH SINGLE DRIVER : COMMON EMITTER

The TD62551S are comprised of four NPN transistor arrays.
Applications include relay, hammer, lamp and display (LED) drivers.

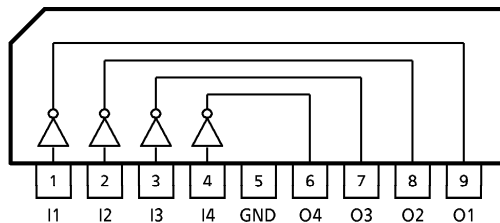
FEATURES

- Output current (single output) 150mA (Max.)
- High sustaining voltage output 25V (Min.)
- Low saturation voltage $V_{CE(sat)} = 0.5V @ I_{OUT} = 50mA$
- Inputs compatible with various types of logic.
- TD62551S : External
- TD62553S : $R_{IN} = 2.7k\Omega$ TTL, 5V CMOS
- TD62554S : $R_{IN} = 10.5k\Omega$ 6~15V PMOS, CMOS
- TD62555S : $R_{IN} = 20k\Omega$ 12~24V PMOS
- Package type-S : SIP-9 pin

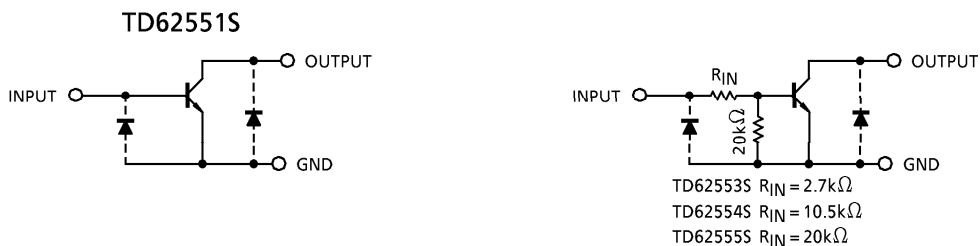


Weight : 0.92g (Typ.)

PIN CONNECTION



SCHEMATICS (EACH DRIVER)



(Note) The input and output parasitic diodes cannot be used as clamp diodes.

961001EBA2

- TOSHIBA is continually working to improve the quality and the reliability of its products. Nevertheless, semiconductor devices in general can malfunction or fail due to their inherent electrical sensitivity and vulnerability to physical stress. It is the responsibility of the buyer, when utilizing TOSHIBA products, to observe standards of safety, and to avoid situations in which a malfunction or failure of a TOSHIBA product could cause loss of human life, bodily injury or damage to property. In developing your designs, please ensure that TOSHIBA products are used within specified operating ranges as set forth in the most recent products specifications. Also, please keep in mind the precautions and conditions set forth in the TOSHIBA Semiconductor Reliability Handbook.
- The products described in this document are subject to foreign exchange and foreign trade control laws.
- The information contained herein is presented only as a guide for the applications of our products. No responsibility is assumed by TOSHIBA CORPORATION for any infringements of intellectual property or other rights of the third parties which may result from its use. No license is granted by implication or otherwise under any intellectual property or other rights of TOSHIBA CORPORATION or others.
- The information contained herein is subject to change without notice.

MAXIMUM RATINGS (Ta = 25°C)

CHARACTERISTIC	SYMBOL	RATING	UNIT
Collector-Emitter Voltage	V _{CEO}	25	V
Collector-Base Voltage	V _{CBO}	35	V
Collector Current	I _C	150	mA / ch
Input Voltage	V _{IN} (Note 1)	20	V
Input Current	I _{IN} (Note 2)	10	mA
Power Dissipation	P _D (Note 3)	0.75	W
Operating Temperature	T _{opr}	-40~85	°C
Storage Temperature	T _{stg}	-55~150	°C

(Note 1) Except TD62551S

(Note 2) Only TD62551S

(Note 3) Delated above 25°C in the proportion of 6.0mW/°C.

RECOMMENDED OPERATING CONDITIONS (Ta = -40~85°C)

CHARACTERISTIC	SYMBOL	CONDITION	MIN.	TYP.	MAX.	UNIT
Collector-Emitter Voltage	V _{CEO}	—	0	—	25	V
Collector-Base Voltage	V _{CBO}	—	0	—	35	V
Collector Current	TD62551S	I _C	—	—	100	mA / ch
	TD62553S					
	TD62554S					
	TD62555S				60	
Input Voltage	TD62553S TD62554S TD62555S	V _{IN}	—	—	20	V
Input Current	TD62551S	I _{IN}	—	—	5	mA
Power Dissipation	P _D	—	—	—	0.27	W

ELECTRICAL CHARACTERISTICS (Ta = 25°C)

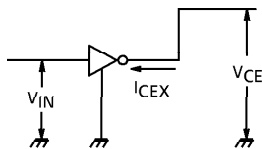
CHARACTERISTIC	SYMBOL	TEST CIR-CUIT	TEST CONDITION	MIN.	TYP.	MAX.	UNIT
Output Leakage Current	I _{CEX}	1	V _{CE} = 25V, V _{IN} = 0V	—	—	10	μA
Collector-Emitter Saturation Voltage	V _{CE} (sat)	2	I _{IN} = 0.5mA, I _C = 10mA	—	0.15	0.2	V
			I _{IN} = 2.5mA, I _C = 50mA	—	0.35	0.5	
DC Current Transfer Ratio	(Note 1)	h _{FE}	V _{CE} = 5V, I _C = 10mA	60	—	400	—
	(Note 2)			50	—	400	
Input Voltage	TD62553S	V _{IN} (ON)	I _{IN} = 0.5mA, I _C = 10mA	1.7	2.1	2.5	V
	TD62554S			4.4	6.0	7.6	
	TD62555S			7.7	10.7	13.8	
Turn-On Delay	t _{ON}	4	V _{OUT} = 25V, R _L = 210Ω C _L = 15pF	—	100	—	ns
Turn-Off Delay	t _{OFF}			—	500	—	

(Note 1) Except TD62551S.

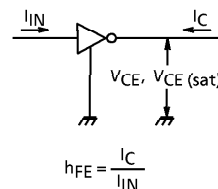
(Note 2) Only TD62551S.

TEST CIRCUIT

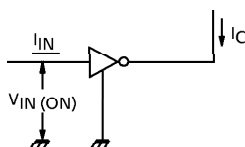
1. I_{CEX}



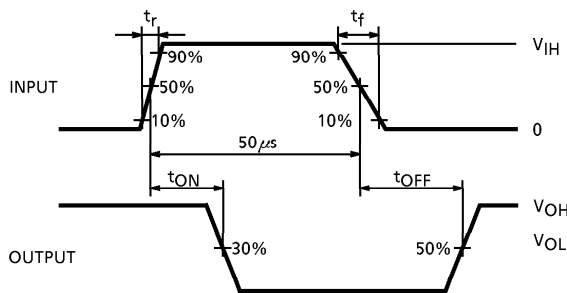
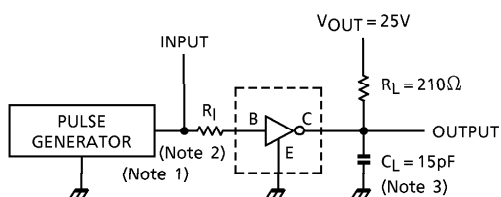
2. h_{FE} , $V_{CE(sat)}$



3. $V_{IN(ON)}$



4. t_{ON} , t_{OFF}



(Note 1) Pulse Width $50\mu s$, Duty Cycle 10%
Output Impedance 50Ω
 $t_r \leq 5ns$, $t_f \leq 10ns$

(Note 2) See right.

(Note 3) C_L includes probe and jig capacitance.

INPUT CONDITION

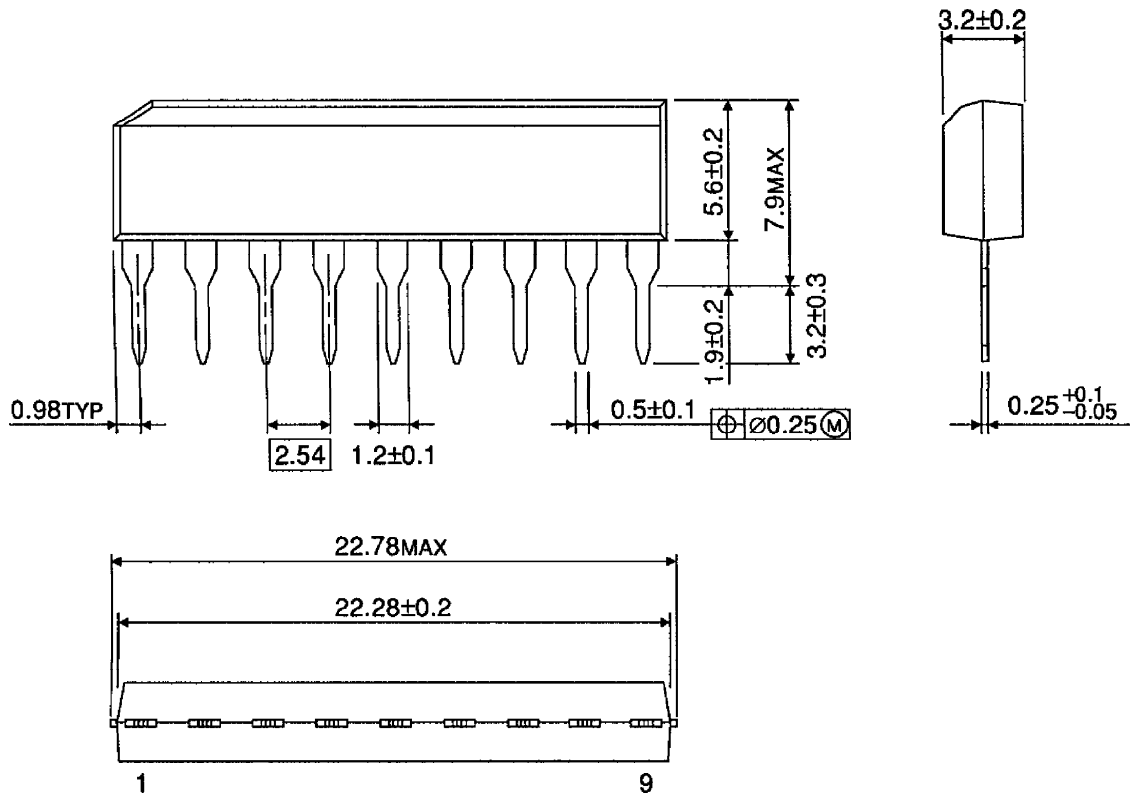
TYPE NUMBER	R_I	V_{IH}
TD62551S	$2.7k\Omega$	3V
TD62553S	0Ω	3V
TD62554S	0Ω	10V
TD62555S	0Ω	14V

PRECAUTIONS for USING

Utmost care is necessary in the design of the output line, V_{CC} and GND line since IC may be destroyed due to short-circuit between outputs, air contamination fault, or fault by improper grounding.

OUTLINE DRAWING
SIP9-P-2.54A

Unit : mm



Weight : 0.92g (Typ.)

Copyright Each Manufacturing Company.

All Datasheets cannot be modified without permission.

This datasheet has been download from :

www.AllDataSheet.com

100% Free DataSheet Search Site.

Free Download.

No Register.

Fast Search System.

www.AllDataSheet.com